

The original of this drawing document was prepared by Soltesz, Inc. (SOLTESZ). This document was not obtained directly from SOLTESZ, Inc. (SOLTESZ). SOLTESZ, Inc. (SOLTESZ) makes no warranty, express or implied, concerning the accuracy of any information that has been transmitted electronically. SOLTESZ cannot guarantee that unauthorized changes and/or alterations were not made by others. If verification of the information contained herein is needed, contact should be made directly with SOLTESZ, Inc. (SOLTESZ). SOLTESZ makes no warranty, express or implied, concerning the accuracy of any information that has been transmitted by electronic means.

ESD FACILITY NO.	DRAINAGE AREA TO FACILITY S.F.	Runoff Coeff. 'C'
PB-2	3,696	0.90
PB-3	3,696	0.90
PB-4	3,036	0.90
MWS-5	19,392	0.79
MWS-6	18,567	0.80
MWS-7	19,307	0.78
PB-11	3,696	0.90
PB-13	6,657	0.88
PB-13A-13F	5,790	0.71
PB-14	2,772	0.90
PB-16	11,143	0.79
PB-16	8,924	0.87
PB-17A-17I	5,472	0.90
PB-18	4,704	0.90
PB19A-19F	2,772	0.90
PB-21	9,076	0.81
PB-22	2,292	0.90
PB-23	2,601	0.90
PB-26	2,612	0.90
PB-28*	13,876	0.90
PB-30A	8,492	0.73
PB-30B	3,645	0.66
PB-31	6,212	0.70

PB-32A	6,425	0.65
PB-32B	5,555	0.63
PB-33A	4,513	0.61
PB-33B	2,677	0.59
PB-34A	2,412	0.76
PB-34B	3,897	0.77
PB-35A	3,338	0.76
PB-35B	2,579	0.84
PB-36A	1,688	0.69
PB-36B	3,180	0.80
PB-37A	4,459	0.84
PB-37B	2,163	0.70
PB-38	19,049	0.90
MWS_39	3,960	0.90
MWS_40	3,220	0.90
MWS_41	2,990	0.90
PP-1	1,600	0.90
PP-2	1,367	0.90
PP-3	973	0.90
PP-4	1,346	0.90
PP-5	1,843	0.90
GRF-1A	2,808	0.90
GRF-1B	5,196	0.90
GRF-2	4,608	0.90
GRF-3	3,360	0.90
GRF-5	5,701	0.90
GRF-6	4,592	0.90
GRF-7	5,830	0.90

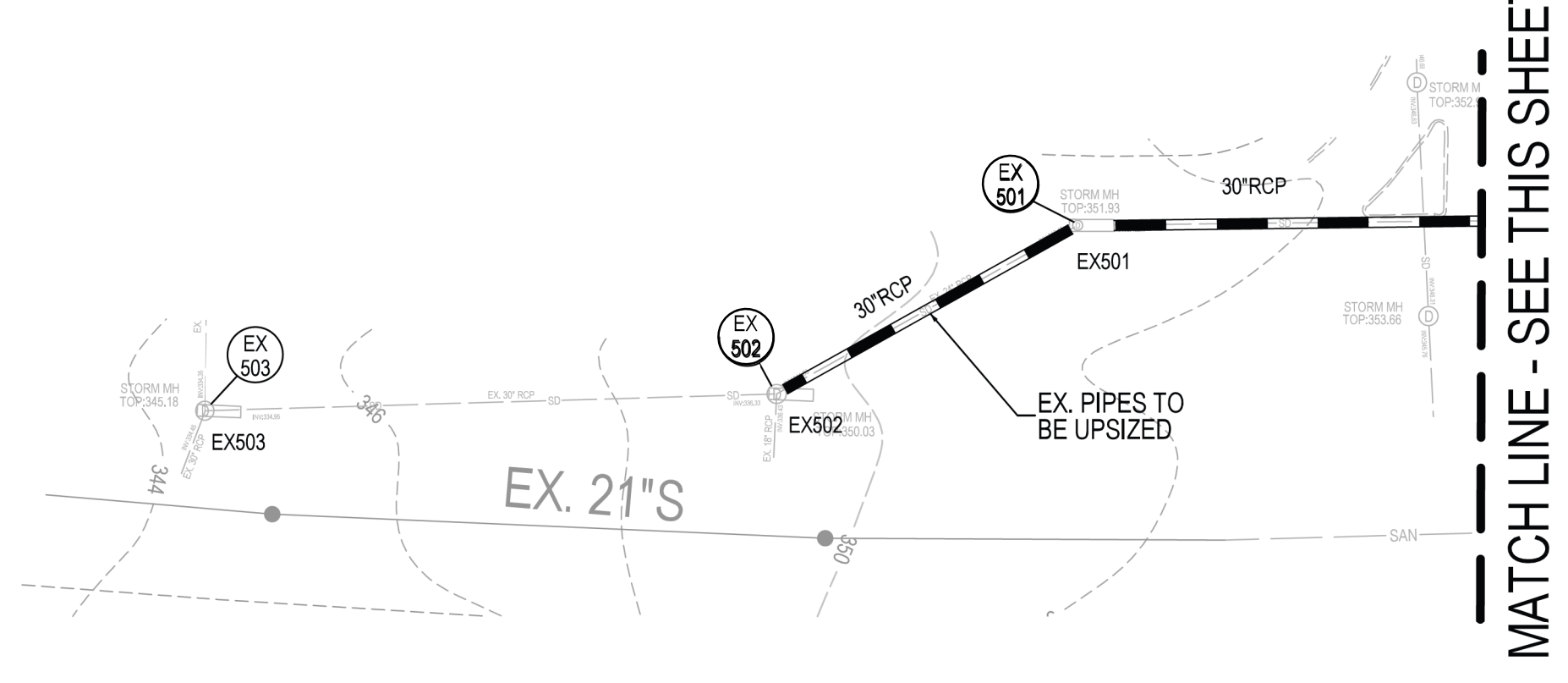
* IMPERVIOUS AREA ALSO TREATED BY GREEN ROOF

STRUCTURAL FACILITY NO.	DRAINAGE AREA TO FACILITY S.F.	Runoff Coeff. 'C'
BIO-1	32,316	0.76
BIO-12	43,107	0.80
STORMFILTER 1	23,012	0.75
STORMFILTER 2*	17,204	0.90
STORMFILTER 3*	13,833	0.90
STORMFILTER 4*	30,884	0.90
STORMFILTER 5	20,954	0.85

* IMPERVIOUS AREA ALSO TREATED BY GREEN ROOF

POI No.	Total LOD	Impervious Area /w LOD	Impervious Percentage
1	163,362	90,940	56%

POI No.	Total LOD	Impervious Area /w LOD	Impervious Percentage
2	303,651	196,855	65%
HOA	139,880	123,711	88%
LOT 1	33,758	31,147	92%
LOT 24	477,289	351,713	74%

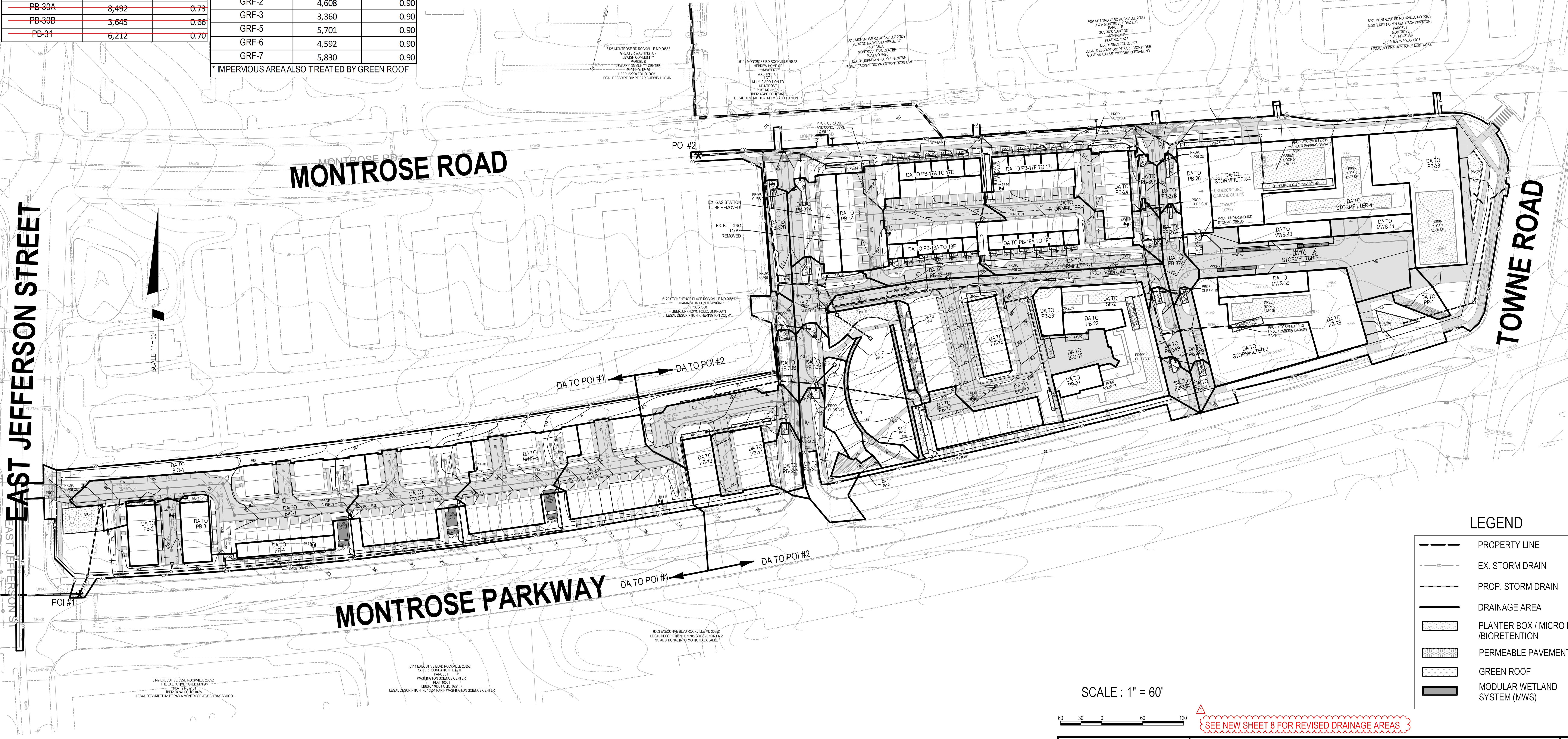


EAST JEFFERSON STREET

TOWNE ROAD

MONTROSE ROAD

MONTROSE PARKWAY



LEGEND

- PROPERTY LINE
- - - EX. STORM DRAIN
- PROP. STORM DRAIN
- DRAINAGE AREA
- ▨ PLANTER BOX / MICRO BIO / BIORETENTION
- ▨ PERMEABLE PAVEMENT
- ▨ GREEN ROOF
- ▨ MODULAR WETLAND SYSTEM (MWS)

SCALE : 1" = 60'

SEE NEW SHEET 8 FOR REVISED DRAINAGE AREAS



Rockville Office
2 Research Place, Suite 100
Rockville, MD 20850
P. 301.948.2750 F. 301.948.9067

Rockville
Lanham
Leesburg
Frederick
Soltesz DC, LLC

NO.	DATE	REVISIONS
1	APRIL 2021	REVISED FOR SWM SITE DEVELOPMENT CONCEPT PHASE 1

MISS UTILITY NOTE
INFORMATION CONCERNING EXISTING UNDERGROUND UTILITIES WAS OBTAINED FROM AVAILABLE RECORDS. THE CONTRACTOR MUST DETERMINE THE EXACT LOCATION AND ELEVATION OF ALL EXISTING UTILITIES AND UTILITIES DISCOVERED BY ENGINEER TEST PITS BY HAND, WELL IN ADVANCE OF THE START OF CONSTRUCTION. CONTACT 'MISS UTILITY' AT 1-800-261-7777, 48 HOURS PRIOR TO THE START OF CONSTRUCTION. IF CLEARANCES ARE LESS THAN SHOWN ON THE PLAN OR TWELVE (12) INCHES, WHOEVER IS LESS, CONTACT THE ENGINEER AND THE UTILITY COMPANY BEFORE PROCEEDING WITH CONSTRUCTION. CLEARANCES LESS THAN NOTED MAY REQUIRE REVISIONS TO THIS PLAN.

OWNER/DEVELOPER/APPLICANT
WILGUS ASSOCIATES, LTD PARTNERSHIP, C/O WILCO
7811 MONTROSE ROAD
SUITE 200
POTOMAC, MD 20854
PHONE: (240) 396-1421
BMAZZUCA@WILCO.COM
ROBERT A. MAZZUCA

MAP	TAX MAP	GRID	5285
WBSC 2007 SHEET	215 NW 06	SITE DATUM	HORIZONTAL: NAD83 VERTICAL: NAD83

PROFESSIONAL CERTIFICATION
I HEREBY CERTIFY THAT THESE DOCUMENTS WERE PREPARED OR APPROVED BY ME, AND THAT I AM A DULY LICENSED PROFESSIONAL ENGINEER UNDER THE LAWS OF THE STATE OF MARYLAND.
LICENSE NO. 30227 EXPIRATION DATE: 05/15/2022

DRAINAGE AREA MAP
STORM WATER MANAGEMENT CONCEPT
NORTH PARK AT MONTROSE (WILGUS TRACT)
RESIDUE PARCELS 5, ROCKVILLE FACILITY, PLAT BOOK 102 PLAT NO. 11548, RESIDUE PARCELS 7A, ROCKVILLE FACILITY, PLAT BOOK 104 PLAT NO. 11548, RESIDUE PARCEL Q, WASHINGTON SCIENCE CENTER, PLAT BOOK 183 PLAT NO. 20343, RESIDUE PARCEL 7B, ROCKVILLE FACILITY, PLAT BOOK 104 PLAT NO. 11548, RESIDUE PARCEL R, WASHINGTON SCIENCE CENTER, PLAT BOOK 183 PLAT NO. 20343, RESIDUE PARCEL 6, ROCKVILLE FACILITY, PLAT BOOK 102 PLAT NO. 11548
6060 MONTROSE ROAD
ROCKVILLE (4TH) ELECTION DISTRICT, MONTGOMERY COUNTY, MARYLAND

SHEET **2**
OF **7-10**
PROJECT NO. 1325-02-01