

ESD DRAINAGE AREA SUMMARY - PHASE 1

ESD FACILITY NO.	DRAINAGE AREA TO FACILITY S.F.	Runoff Coeff. 'C'
PB-2	3,696	0.90
PB-3	3,696	0.90
PB-4	3,036 1,728	0.79
MWS-5	19,392	0.79
MWS-6	18,567	0.80
MWS-7	19,307	0.78
PB-10	3,696	0.90
PB-11	6,657	0.88
PB-13	5,790 6,641	0.74 0.71
PB-13A-13F E	2,772 1,320	0.90 0.90
PB-14	11,143 11,252	0.79 0.79
PB-16	8,924 8,461	0.87
PB-17A-17I	5,472	0.90
PB-18	4,704	0.90
PB19A-19F E	2,772 1,320	0.90 0.90
PB-30A	8,492	0.73
PB-30B	3,645 4,607	0.61 0.66
PB-31	6,212 6,135	0.63 0.70

PB-32A	6,425 8,617	0.72 0.65
PB-33A	4,513	0.61
PB-33B	2,677 2,952	0.60 0.59
PB-34A	2,412	0.76
PB-34B	3,897	0.77
PB-35A	3,338 3,108	0.75 0.76
PB-35B	2,579 2,609	0.79 0.84
PB-36A	1,688	0.69
PB-36B	3,180 3,206	0.79 0.80
PB-37A	4,459 4,014	0.78 0.84
PB-37B	2,163 2,274	0.71 0.70
PP-2	1,367 1,726	0.90
PP-3	973 950	0.90
PP-4	1,346 423	0.90
PB-24	9,076	0.81
BS-1	5,894	0.43

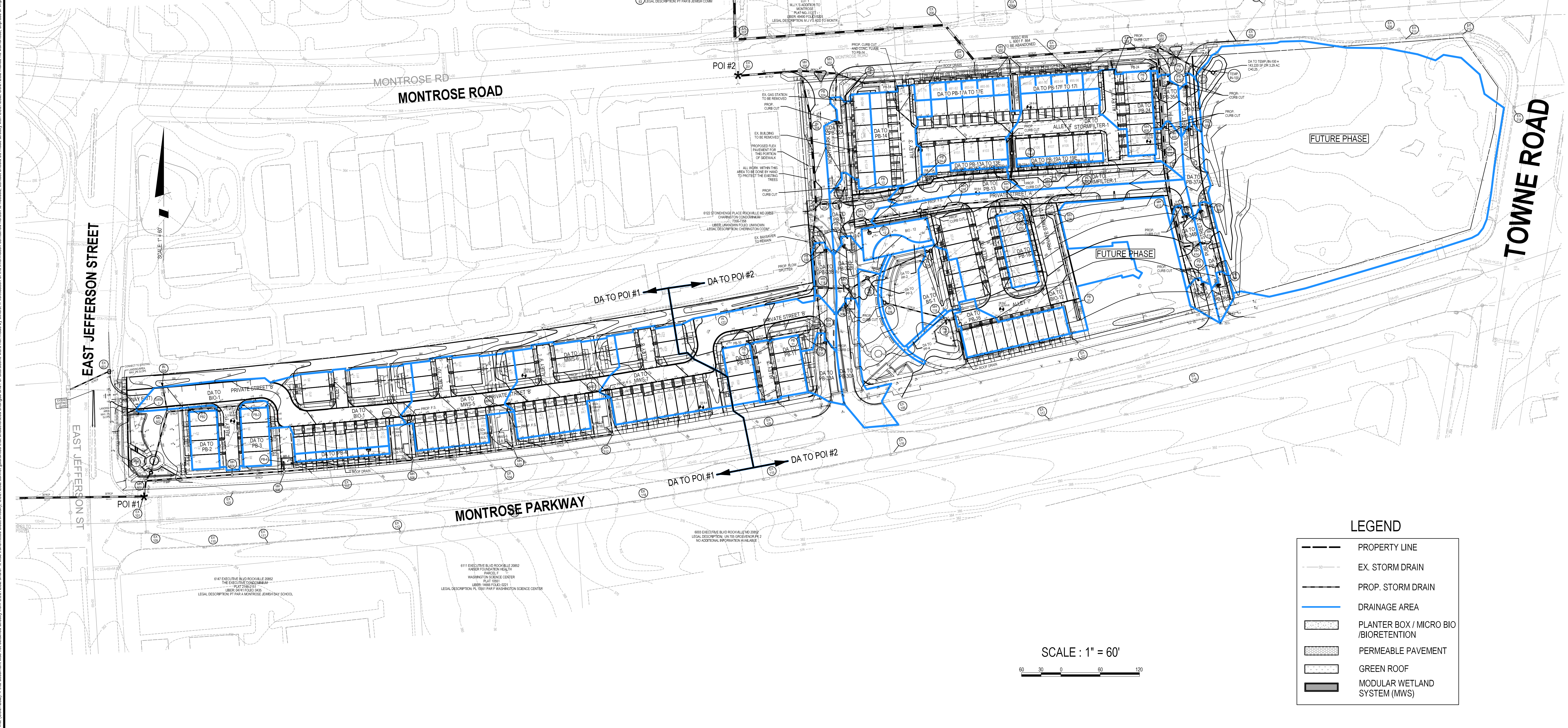
* IMPERVIOUS AREA ALSO TREATED BY GREEN ROOF

STRUCTURAL FACILITY NO.	DRAINAGE AREA TO FACILITY S.F.	Runoff Coeff. 'C'
BIO-1	32,316 37,375	0.71 0.76
BIO-12	43,107 42,165	0.80
STORMFILTER 1	23,012 24,401	0.76 0.75

* IMPERVIOUS AREA ALSO TREATED BY GREEN ROOF

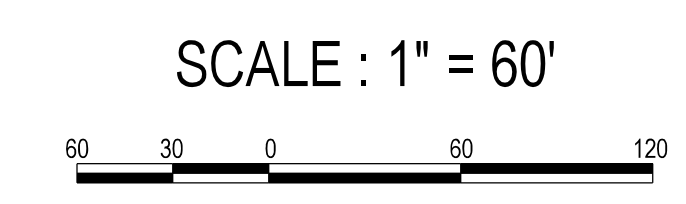
POI No.	Total LOD	Impervious Area /w LOD	Impervious Percentage
1	163,362	90,940	56%
	157,212	93,705	60%

POI No.	Total LOD	Impervious Area /w LOD	Impervious Percentage
2	280,920	186,647	67%
HOA	303,651	196,855	65%
LOT 1	163,324 139,880	123,711 133,632	88% 81%
LOT 24	35,002 33,758	31,147 31,378	92% 89%
TOTAL	477,289	351,713	74%
	479,246	350,597	



LEGEND

- PROPERTY LINE
- - - EX. STORM DRAIN
- PROP. STORM DRAIN
- DRAINAGE AREA
- [Pattern] PLANTER BOX / MICRO BIO / BIOTENTION
- [Pattern] PERMEABLE PAVEMENT
- [Pattern] GREEN ROOF
- [Pattern] MODULAR WETLAND SYSTEM (MWS)



SOLTESZ, INC.
 Rockville Office
 2 Research Place, Suite 100
 Rockville, MD 20850
 P. 301.948.2750 F. 301.948.9067

REVISIONS FOR SWM SITE DEVELOPMENT CONCEPT PHASE 1

NO.	DATE	REVISIONS	BY	DATE
1	APRIL 2021	ADD STANDARD VERSION: V8 - NCS	J.S.	2/9/2021

MISS UTILITY NOTE
 INFORMATION CONCERNING EXISTING UNDERGROUND UTILITIES WAS OBTAINED FROM AVAILABLE RECORDS. THE CONTRACTOR MUST DETERMINE THE EXACT LOCATION AND ELEVATION OF ALL EXISTING UTILITIES AND UTILITIES OR SERVICES BY EXCAVATION TESTS BY HAND, WELL IN ADVANCE OF THE START OF EXCAVATION. CONTACT MISS UTILITY AT 1-800-261-7777 48 HOURS PRIOR TO THE START OF EXCAVATION. IF CLEARANCES ARE LESS THAN SHOWN ON THE PLAN OR TWELVE (12) INCHES, WHOEVER IS LESS, CONTACT THE ENGINEER AND THE UTILITY COMPANY BEFORE PROCEEDING WITH CONSTRUCTION. CLEARANCES LESS THAN NOTED MAY REQUIRE REVISIONS TO THIS PLAN.

OWNER/DEVELOPER/APPLICANT
 WILGUS ASSOCIATES, LTD PARTNERSHIP, C/O WILCO
 7811 MONTROSE ROAD
 SUITE 200
 POTOMAC, MD 20854
 PHONE: (240) 396-1421
 BMAZZUCA@WILCO.COM
 ROBERT A. MAZZUCA

MAP	ADC	GRID	5285
TAX MAP	GC02	ZONING CATEGORY	CR-30 (C-1), R-10 (R-20), CR-30 (C-1), R-10 (R-20), CR-30 (C-1), R-10 (R-20)
WBC 200 SHEET	215 NW 06	SITE DATUM	HORIZONTAL: NAD83 VERTICAL: NAD83

PROFESSIONAL CERTIFICATION
 I HEREBY CERTIFY THAT THESE DOCUMENTS WERE PREPARED OR APPROVED BY ME, AND THAT I AM A DULY LICENSED PROFESSIONAL ENGINEER UNDER THE LAWS OF THE STATE OF MARYLAND.
 LICENSE NO. 30227 EXPIRATION DATE: 05/15/2022

DRAINAGE AREA MAP - PHASE 1

**STORM WATER MANAGEMENT CONCEPT
 SITE DEVELOPMENT CONCEPT (PHASE 1)
 NORTH PARK AT MONTROSE (WILGUS TRACT)**

RESIDUE PARCELS 5, ROCKVILLE FACILITY, PLAT BOOK 102 PLAT NO. 11548, RESIDUE PARCEL 7A, ROCKVILLE FACILITY, PLAT BOOK 104 PLAT NO. 11548
 RESIDUE PARCEL 9, WASHINGTON SCIENCE CENTER, PLAT BOOK 183 PLAT NO. 20343, RESIDUE PARCEL 7B, ROCKVILLE FACILITY, PLAT BOOK 104 PLAT NO. 11548
 RESIDUE PARCEL R, WASHINGTON SCIENCE CENTER, PLAT BOOK 183 PLAT NO. 20343, RESIDUE PARCEL 6, ROCKVILLE FACILITY, PLAT BOOK 102 PLAT NO. 11548

6060 MONTROSE ROAD
 ROCKVILLE (4TH) ELECTION DISTRICT, MONTGOMERY COUNTY, MARYLAND

PROJECT NO. 1325-02-01

SHEET 8 OF 7-10

The original of this drawing document was prepared by Soltesz, Inc. (SOLTESZ). This document was not obtained directly from SOLTESZ, Inc. SOLTESZ, Inc. cannot guarantee the accuracy of any information that has been transmitted electronically. SOLTESZ cannot guarantee that unauthorized changes and/or alterations were not made by others. If verification of the information contained herein is needed, contact should be made directly with SOLTESZ. SOLTESZ makes no warranties, express or implied, concerning the accuracy of any information that has been transmitted by electronic means.