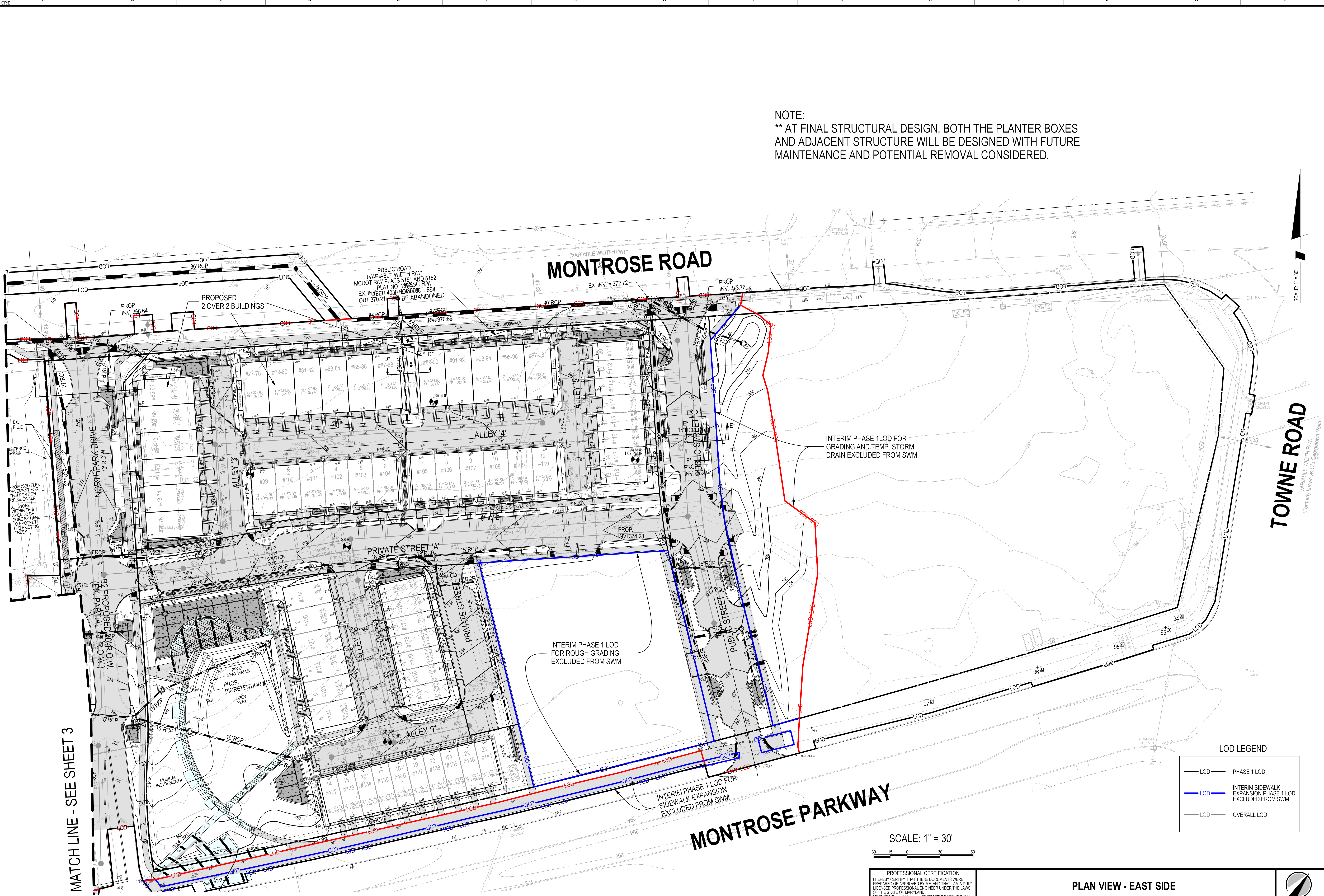


The original of this drawing document was prepared by Soltesz, Inc. (SOLTESZ). This document was not obtained directly from SOLTESZ, Inc. (SOLTESZ). SOLTESZ, Inc. (SOLTESZ) makes no warranty, express or implied, concerning the accuracy of any information that has been transmitted by electronic means.



NOTE:
 ** AT FINAL STRUCTURAL DESIGN, BOTH THE PLANTER BOXES AND ADJACENT STRUCTURE WILL BE DESIGNED WITH FUTURE MAINTENANCE AND POTENTIAL REMOVAL CONSIDERED.

MATCH LINE - SEE SHEET 3

TOWNE ROAD
 (Formerly known as Old Georgetown Road)

LOD LEGEND

	PHASE 1 LOD
	INTERIM SIDEWALK EXPANSION PHASE 1 LOD EXCLUDED FROM SWM
	OVERALL LOD

SCALE: 1" = 30'

SOLTESZ, INC.
 Rockville Office
 2 Research Place, Suite 100
 Rockville, MD 20850
 P. 301.948.2750 F. 301.948.9067
 www.soltesz.com

DESIGNED: A.G.	CAD STANDARDS VERSION: 18 - NCS	REVISIONS:	BY: AG	DATE: 11/29/2020
REVISIONS FOR SWM SITE DEVELOPMENT CONCEPT PHASE 1				

MISS UTILITY NOTE
 INFORMATION CONCERNING EXISTING UNDERGROUND UTILITIES WAS OBTAINED FROM AVAILABLE RECORDS. THE CONTRACTOR MUST DETERMINE THE EXACT LOCATION AND ELEVATION OF ALL EXISTING UTILITIES AND UTILITY CROSSINGS BY ENGINEER TEST PITS BY HAND, WELL IN ADVANCE OF THE START OF EXCAVATION. CONTACT "MISS UTILITY" AT 1-800-261-7777. 48 HOURS PRIOR TO THE START OF EXCAVATION. IF CLEARANCES ARE LESS THAN SHOWN ON THIS PLAN OR TWELVE (12) INCHES, WHICHEVER IS LESS, CONTACT THE ENGINEER AND THE UTILITY COMPANY BEFORE PROCEEDING WITH CONSTRUCTION. CLEARANCES LESS THAN NOTED MAY REQUIRE REVISIONS TO THIS PLAN.

OWNER/DEVELOPER/APPLICANT
 WILGUS ASSOCIATES, LTD PARTNERSHIP, C/O WILCO
 7811 MONTROSE ROAD
 SUITE 200
 POTOMAC, MD 20854
 PHONE: (240) 396-1421
 BMAZZUCA@WILCO.COM
 ROBERT A. MAZZUCA

MAP: ADC	GRID: 5285
TAX MAP: G002	ZONING CATEGORY: CR-20 (C-10, N-10, R-20, CR-20, C-20, R-10, R-20)
WISC 200 SHEET: 215 NW 06	SITE DATUM: HORIZONTAL - NAD83 VERTICAL - NAD83

PROFESSIONAL CERTIFICATION
 I HEREBY CERTIFY THAT THESE DOCUMENTS WERE PREPARED OR APPROVED BY ME, AND THAT I AM A DULY LICENSED PROFESSIONAL ENGINEER UNDER THE LAWS OF THE STATE OF MARYLAND.
 LICENSE NO. 30227 EXPIRATION DATE: 05/15/2022

PLAN VIEW - EAST SIDE

**SWM SITE DEVELOPMENT CONCEPT (PHASE 1)
 NORTH PARK AT MONTROSE (WILGUS TRACT)**

RESIDUE PARCEL 5, ROCKVILLE FACILITY, PLAT BOOK 102 PLAT NO. 11588; RESIDUE PARCEL 7A, ROCKVILLE FACILITY, PLAT BOOK 104 PLAT NO. 11948; RESIDUE PARCEL Q, WASHINGTON SCIENCE CENTER, PLAT BOOK 183 PLAT NO. 20343; RESIDUE PARCEL 7B, ROCKVILLE FACILITY, PLAT BOOK 104 PLAT NO. 11948; RESIDUE PARCEL R, WASHINGTON SCIENCE CENTER, PLAT BOOK 183 PLAT NO. 20343; RESIDUE PARCEL L, ROCKVILLE FACILITY, PLAT BOOK 102 PLAT NO. 11588

7811 MONTROSE ROAD
 POTOMAC (1ST) ELECTION DISTRICT, MONTGOMERY COUNTY, MARYLAND

SHEET: 8	PROJECT NO.: 1325-02-01
OF: 8	