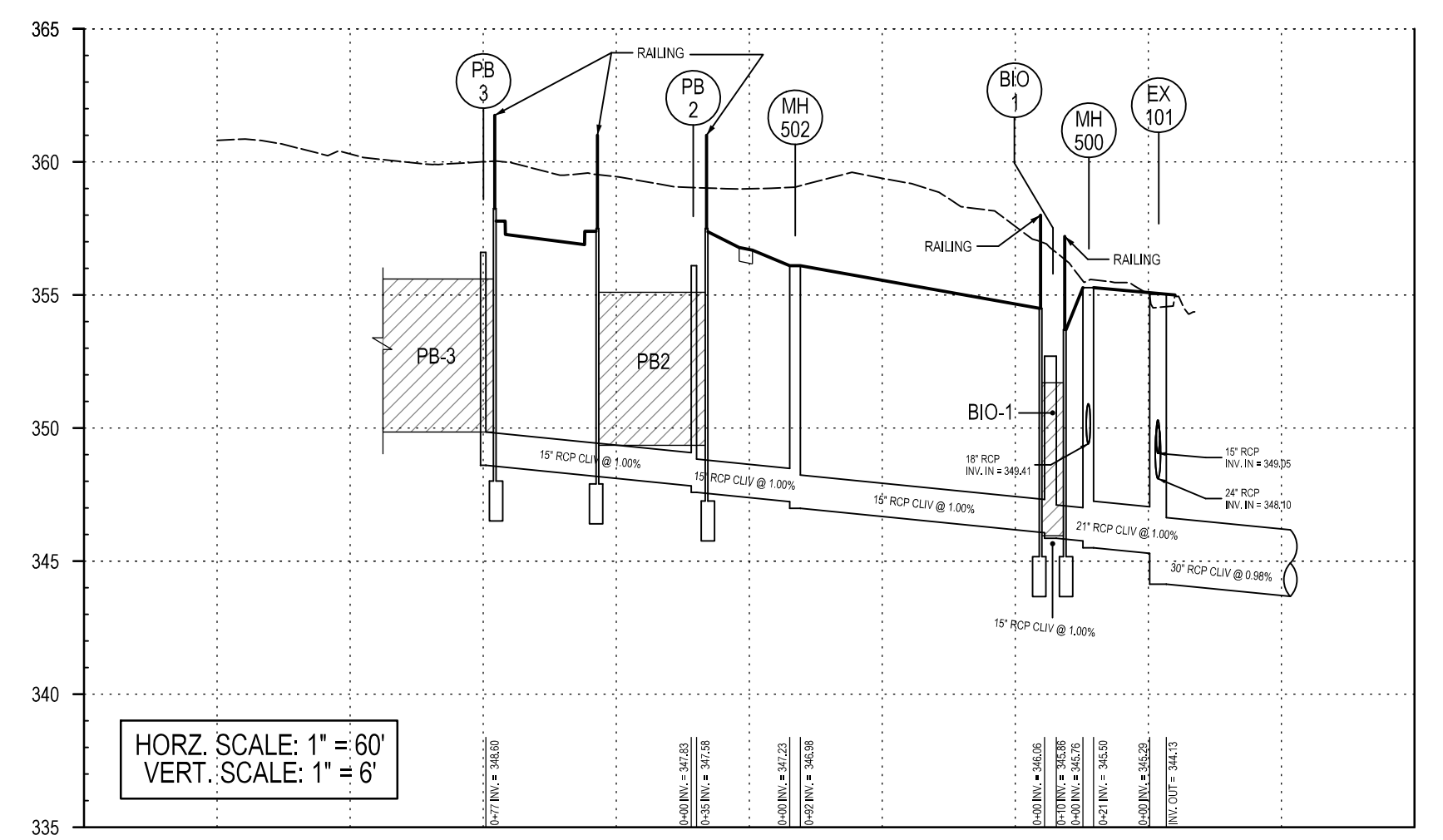


The original of this drawing document was prepared by Soltesz, Inc. (SOLTESZ). This document was not obtained directly from SOLTESZ, Inc. (SOLTESZ). It is transmitted electronically. SOLTESZ cannot guarantee that unauthorized changes and/or alterations were not made by others. If verification of the information contained herein is needed, contact should be made directly with SOLTESZ. SOLTESZ makes no warranties, express or implied, concerning the accuracy of any information that has been transmitted by electronic means.

PB-3 TO EX101

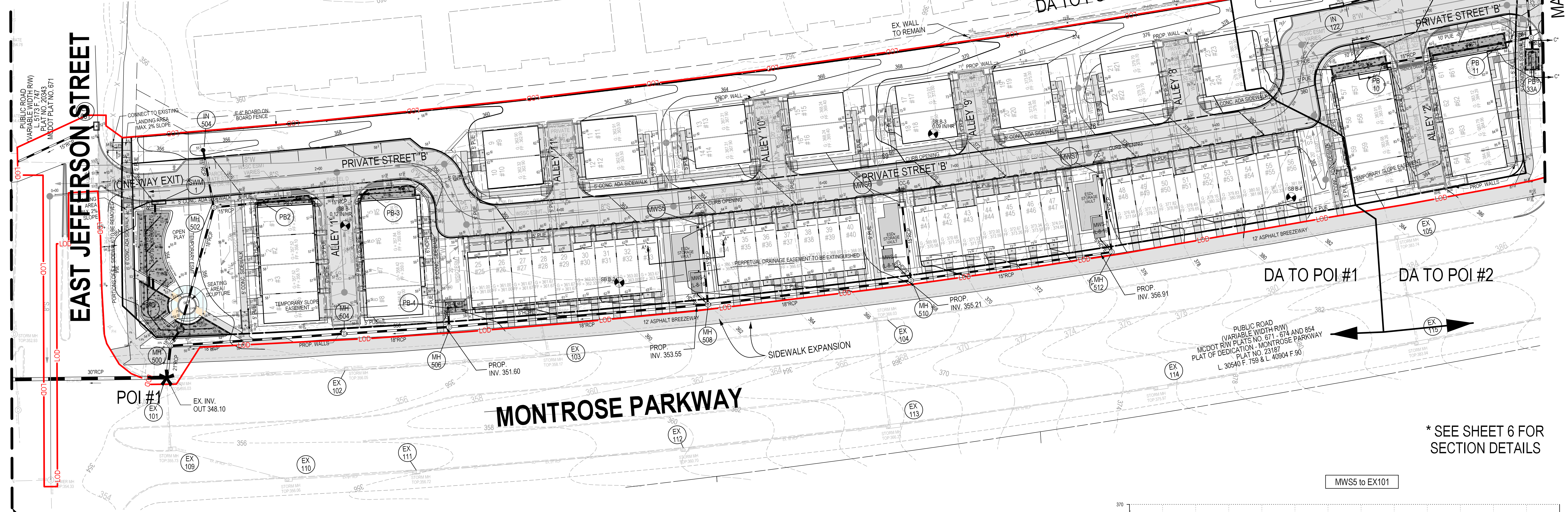


HORIZ. SCALE: 1" = 60'
VERT. SCALE: 1" = 6'

N= 504500

SCALE: 1" = 30'

NOTE:
** AT FINAL STRUCTURAL DESIGN, BOTH THE PLANTER BOXES AND ADJACENT STRUCTURE WILL BE DESIGNED WITH FUTURE MAINTENANCE AND POTENTIAL REMOVAL CONSIDERED.

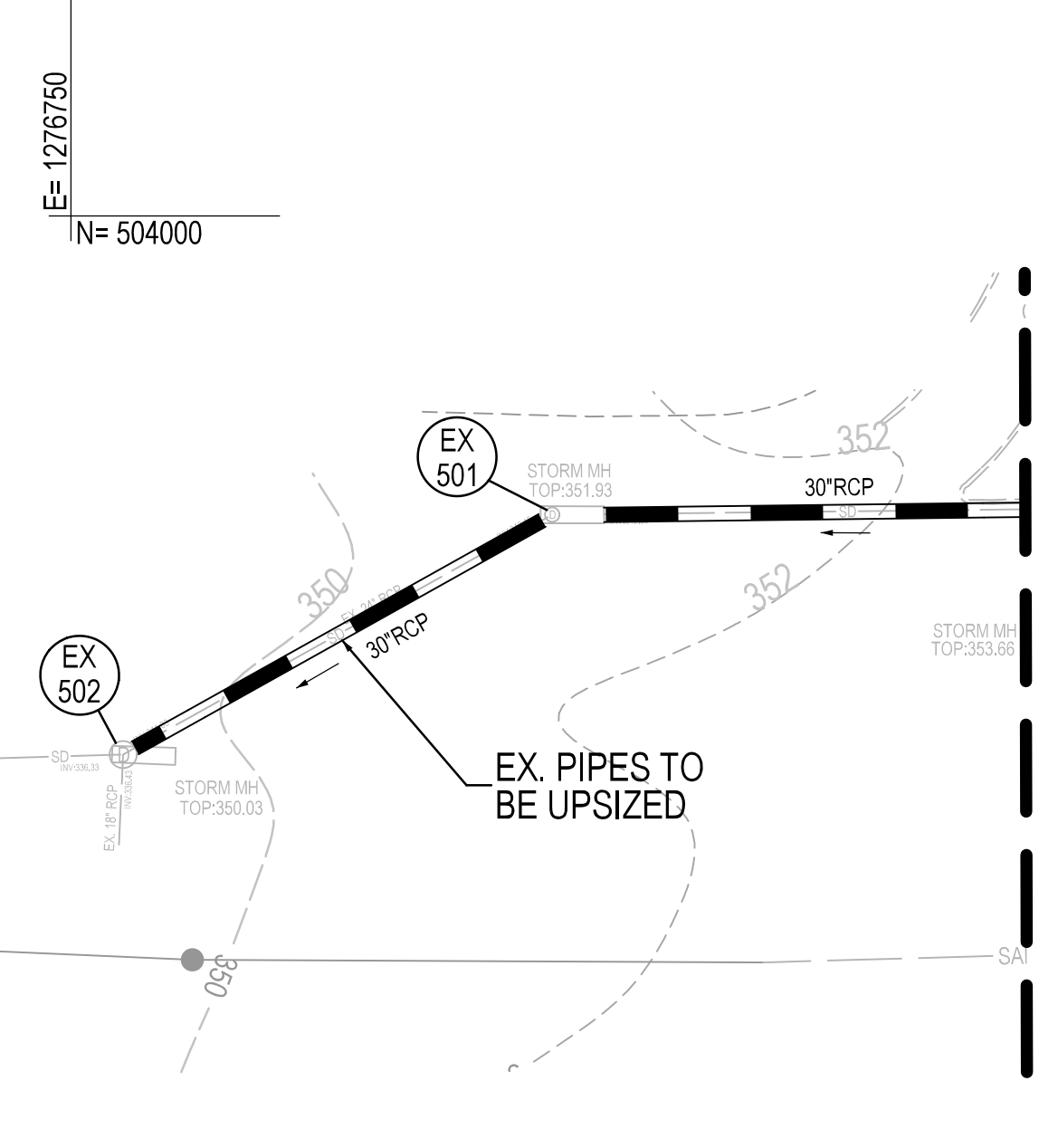


MATCH LINE - SEE THIS SHEET

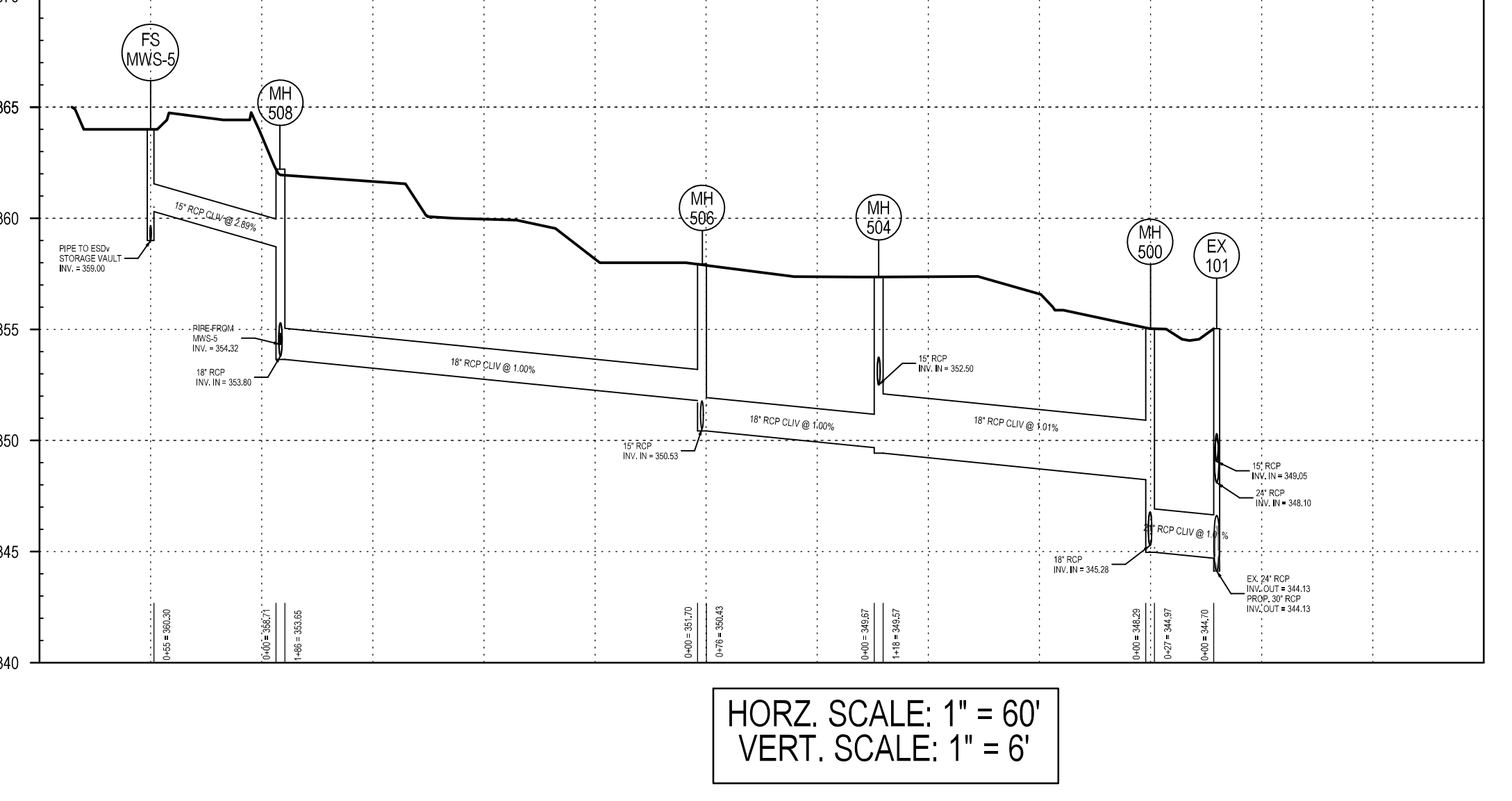
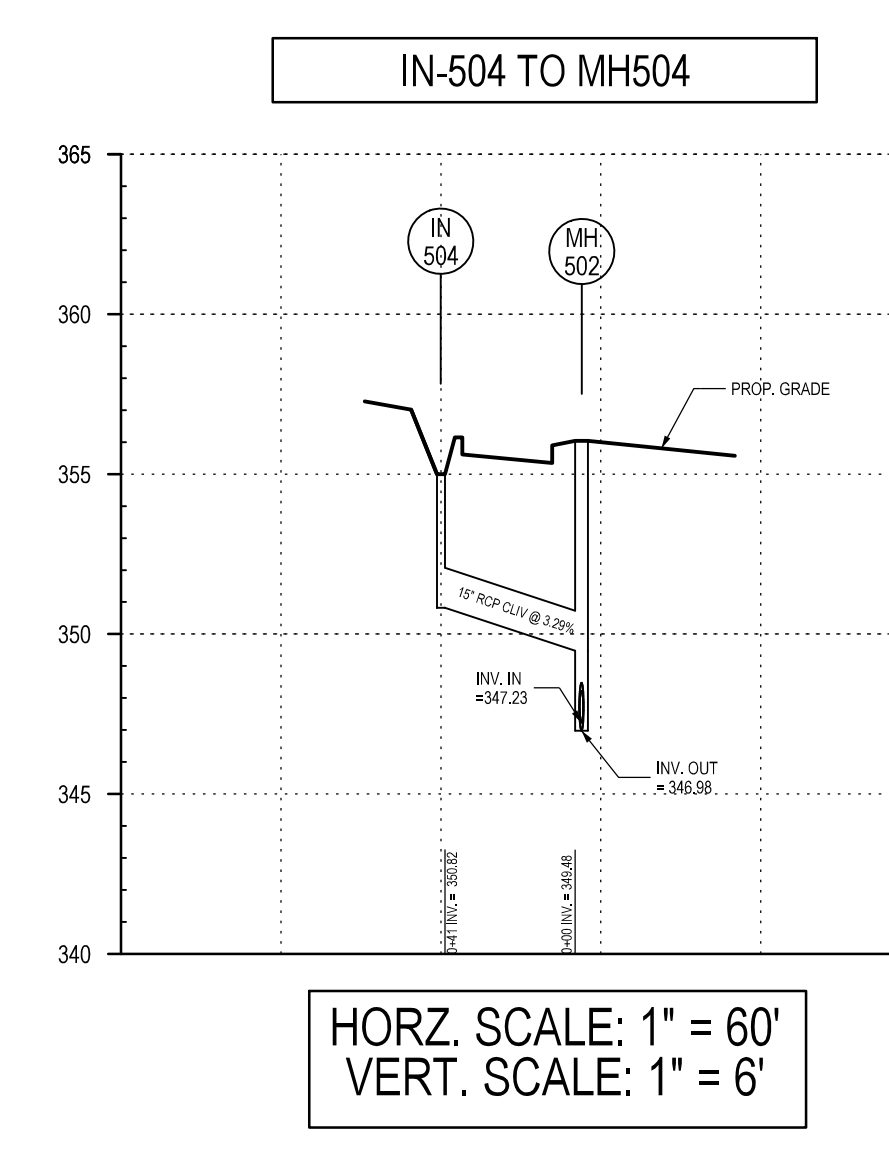
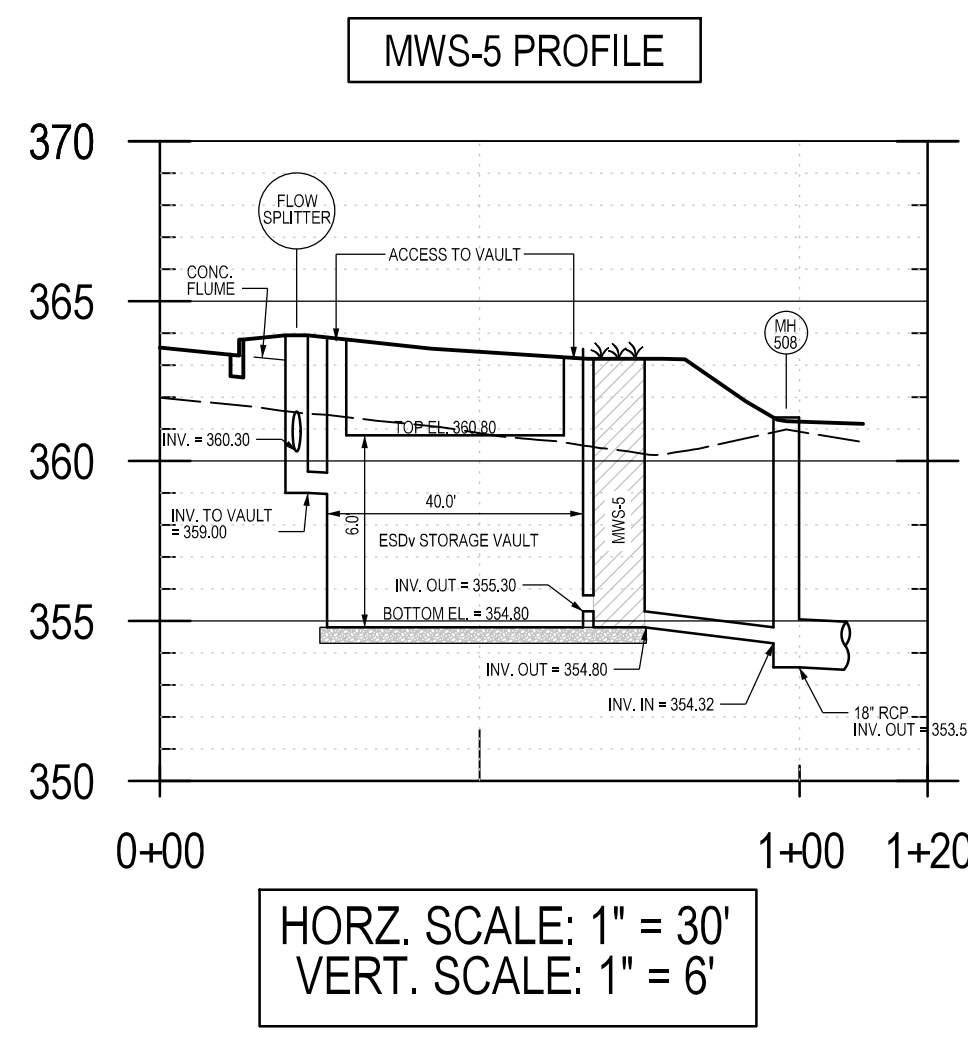
* SEE SHEET 6 FOR SECTION DETAILS

LEGEND

	PHASE 1 LOD
	PROPERTY LINE
	SOIL LINE / HSG
	STORM DRAIN PIPE
	PROP. SEWER LINE
	PROP. WATER LINE
	PLANTER BOX / MICRO BIO / BIORETENTION
	PERMEABLE PAVEMENT
	GREEN ROOF
	MODULAR WETLAND SYSTEM (MWS)



MATCH LINE - SEE THIS SHEET



SOLTESZ, INC.
Rockville Office
2 Research Place, Suite 100
Rockville, MD 20850
P. 301.948.2750 F. 301.948.9067

Rockville
Lanham
Waldorf
Leesylvania
Frederick
Soltesz DC, LLC

NO.	DATE	CAO STANDARDS VERSION	REVISIONS	BY	DATE
1	APRIL 2021	19 - NCS	REVISIONS FOR SWM SITE DEVELOPMENT CONCEPT PHASE 1	AG	2/8/2021
DESIGNED:	A.G.	TECHNICIAN:	A.G.	CHECKED:	J.S.

MISS UTILITY NOTE
INFORMATION CONCERNING EXISTING UNDERGROUND UTILITIES WAS OBTAINED FROM AVAILABLE RECORDS. THE CONTRACTOR MUST DETERMINE THE EXACT LOCATION AND ELEVATION OF ALL EXISTING UTILITIES AND UTILITIES OR SERVICES BY ENGINEER TEST FITS BY HAND, WELL IN ADVANCE OF THE START OF EXCAVATION. CONTACT MISS UTILITY AT 1-800-261-7777, 48 HOURS PRIOR TO THE START OF EXCAVATION. IF CLEARANCES ARE LESS THAN SHOWN ON THIS PLAN OR TWELVE (12) INCHES, WHOEVER IS LESS, CONTACT THE ENGINEER AND THE UTILITY COMPANY BEFORE PROCEEDING WITH CONSTRUCTION. CLEARANCES LESS THAN NOTED MAY REQUIRE REVISIONS TO THIS PLAN.

OWNER/DEVELOPER/APPLICANT
WILGUS ASSOCIATES, LTD PARTNERSHIP, C/O WILCO
7811 MONTROSE ROAD
SUITE 200
POTOMAC, MD 20854
PHONE: (240) 396-1421
BMAZZUCA@WILCO.COM
ROBERT A. MAZZUCA

MAP	ADC	GRID	5285
TAX MAP	GRID	GRID	5285
WBCS 200 SHEET	215 NW 06	SITE DATUM	HORIZONTAL: NAD83 VERTICAL: NAD83

PROFESSIONAL CERTIFICATION
I HEREBY CERTIFY THAT THESE DOCUMENTS WERE PREPARED OR APPROVED BY ME, AND THAT I AM A DULY LICENSED PROFESSIONAL ENGINEER UNDER THE LAWS OF THE STATE OF MARYLAND.
LICENSE NO. 30227 EXPIRATION DATE: 05/15/2022

PLAN VIEW - WEST SIDE - PHASE 1
STORM WATER MANAGEMENT CONCEPT
SITE DEVELOPMENT CONCEPT (PHASE 1)
NORTH PARK AT MONTROSE (WILGUS TRACT)
RESIDUE PARCELS 5, ROCKVILLE FACILITY, PLAT BOOK 102 PLAT NO. 11588, RESIDUE PARCEL 7A, ROCKVILLE FACILITY, PLAT BOOK 104 PLAT NO. 11548, RESIDUE PARCEL Q, WASHINGTON SCIENCE CENTER, PLAT BOOK 183 PLAT NO. 20343, RESIDUE PARCEL 7B, ROCKVILLE FACILITY, PLAT BOOK 104 PLAT NO. 11548, RESIDUE PARCEL R, WASHINGTON SCIENCE CENTER, PLAT BOOK 183 PLAT NO. 20343, RESIDUE PARCEL 6, ROCKVILLE FACILITY, PLAT BOOK 102 PLAT NO. 11588
6060 MONTROSE ROAD
ROCKVILLE (4TH) ELECTION DISTRICT, MONTGOMERY COUNTY, MARYLAND

SHEET **9**
OF **7-10**
PROJECT NO.
1325-02-01