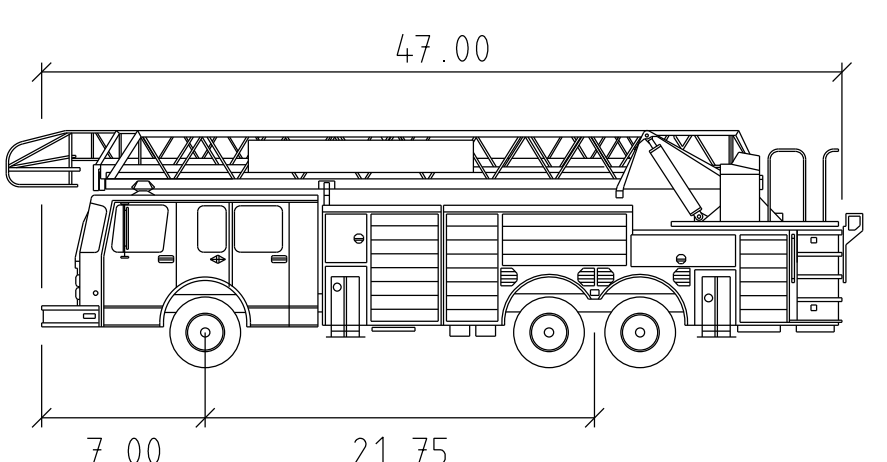


The original of this drawing document was prepared by Soltesz, Inc. (SOLTESZ). This document was not obtained directly from SOLTESZ, Inc. (SOLTESZ). SOLTESZ, Inc. (SOLTESZ) cannot guarantee that unauthorized changes and/or alterations were not made by others. If verification of the information contained herein is needed, contact should be made directly with SOLTESZ, Inc. (SOLTESZ). SOLTESZ makes no warranties, express or implied, concerning the accuracy of any information that has been transmitted by electronic means.

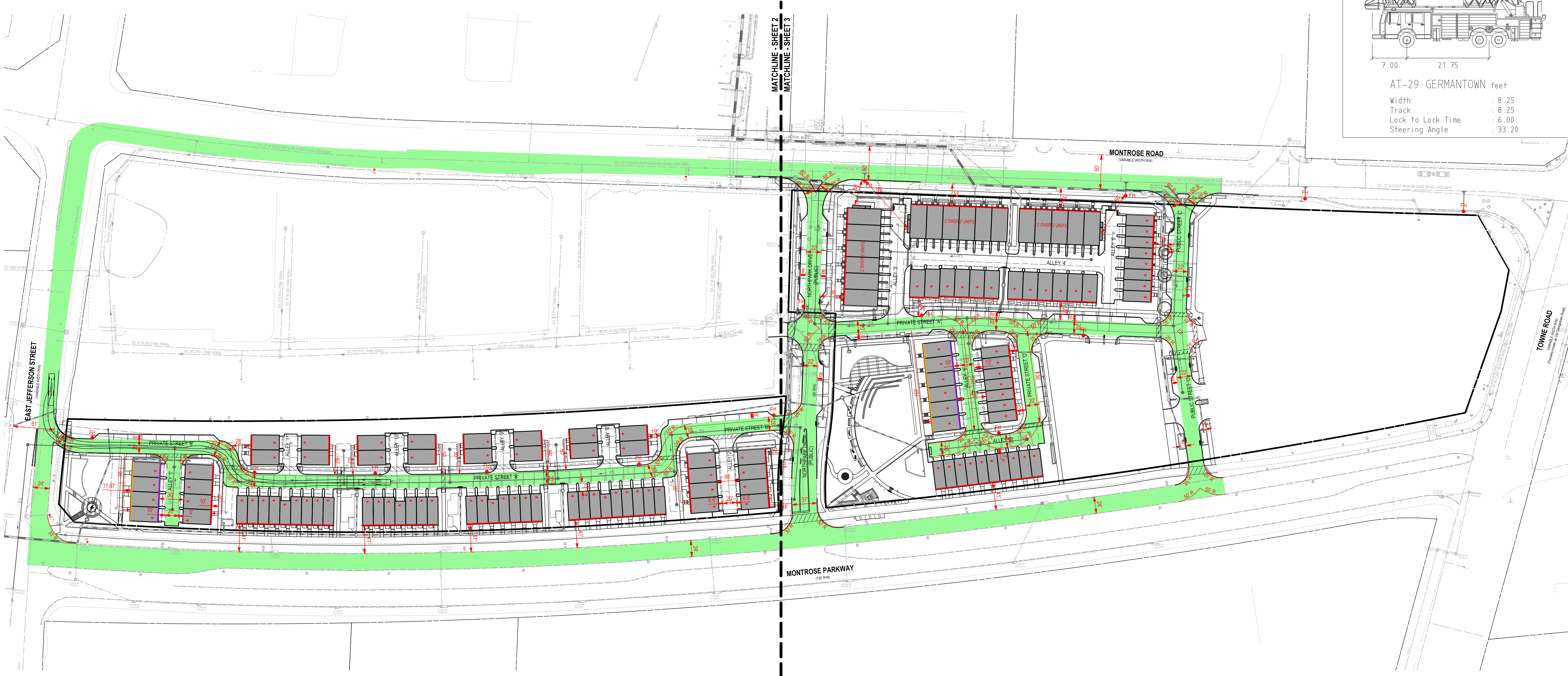
**LEGEND**

- FIRE ACCESS LANE  
Meets apparatus loading to be no less than 85,000 lbs or meet tertiary road subgrade.
- EXISTING / PROPOSED FIRE HYDRANT
- PRIMARY BUILDING ACCESS WITHIN 50'
- 4 STORY TOWNHOUSE - NO FDC REQUIRED

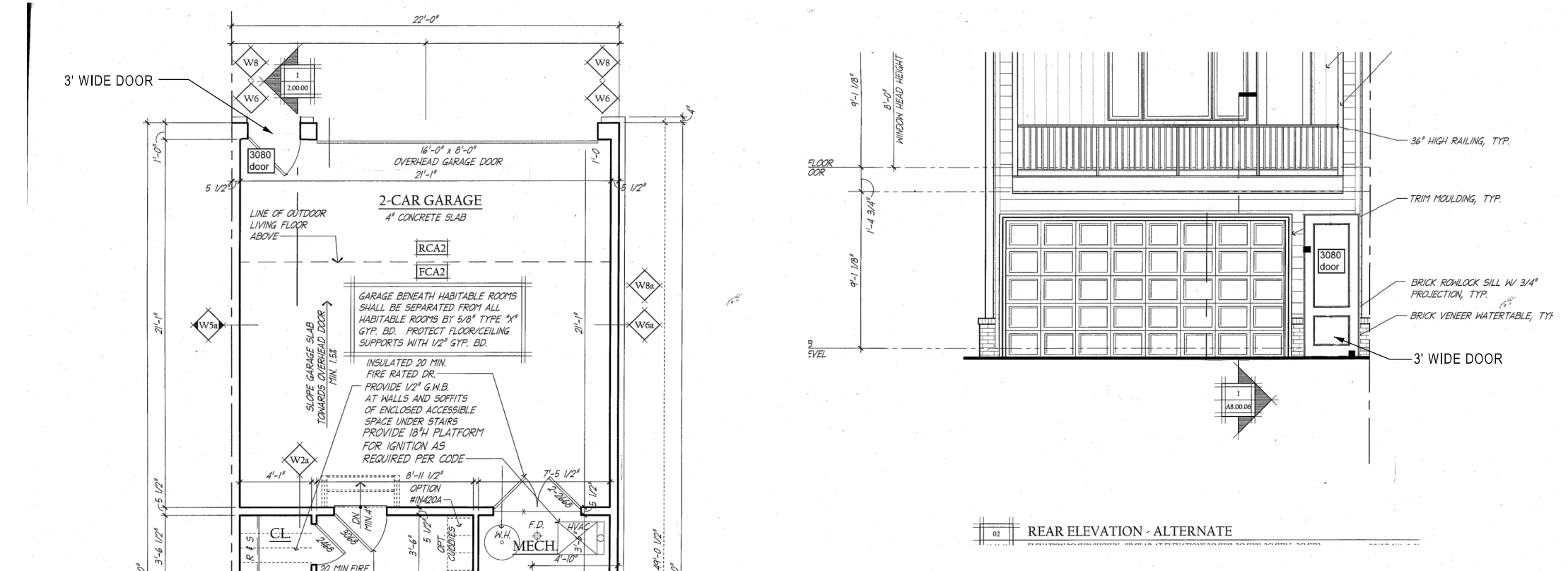


AT-29 GERMANTOWN feet

Width	: 8.25
Track	: 8.25
Lock to Lock Time	: 6.00
Steering Angle	: 33.20



**REAR-LOAD TOWNHOUSE FIRE ACCESSIBLE 3' WIDE SIDE HINGE DOOR GARAGE ENTRY DETAIL:  
(APPLIES TO UNITS WITH PRIMARY ACCESS BETWEEN 50'-150' AND SECONDARY ACCESS WITHIN 50' -  
SEE BLDGS WITH PURPLE LINE DESIGNATION)**



- PRIMARY ACCESS WITHIN 50'
- PRIMARY ACCESS WITHIN 150'
- SECONDARY ACCESS WITHIN 50'

**DEVELOPER'S CERTIFICATE**  
The undersigned agrees to execute all the features of the Site Plan Approval No. 820210080, including Approval Conditions, Development Program, and Certified Site Plan.  
Developer's Name: WILGUS/MONTROSE ASSOCIATES LLC  
Company: RICHARD COHEN  
Address: 7811 MONTROSE ROAD, SUITE 200, POTOMAC, MD 20854  
Phone: (240) 399-1500  
Signature: \_\_\_\_\_

**PROFESSIONAL CERTIFICATION**  
I HEREBY CERTIFY THAT THESE DOCUMENTS WERE PREPARED OR APPROVED BY ME, AND THAT I AM A DULY LICENSED PROFESSIONAL ENGINEER UNDER THE LAWS OF THE STATE OF MARYLAND.  
LICENSE NO. 30287 EXPIRATION DATE: 05/18/2022

**FIRE DEPARTMENT ACCESS OVERALL PLAN**

**SITE PLAN 820210080  
NORTH PARK AT MONTROSE  
(FORMERLY WILGUS TRACT)**

ROCKVILLE (4TH) ELECTION DISTRICT, MONTGOMERY COUNTY, MARYLAND

**SOLTESZ, INC.**  
Rockville Office  
2 Research Place, Suite 100  
Rockville, MD 20850  
P. 301.948.2750 F. 301.948.9067  
www.soltesz.com

NO.	DATE	DESIGNED	BY	DATE
1	MARCH 2021	JDS / KOL	TJS	

**MISS UTILITY NOTE**  
INFORMATION CONCERNING EXISTING UNDERGROUND UTILITIES WAS OBTAINED FROM AVAILABLE RECORDS. THE CONTRACTOR MUST DETERMINE THE EXACT LOCATION AND ELEVATION OF ALL EXISTING UTILITIES AND UTILITIES OR SERVICES BY ENGINEERING TESTS BY HAND, WELL IN ADVANCE OF THE START OF EXCAVATION. CONTACT "MISS UTILITY" AT 1-800-261-7777. 48 HOURS PRIOR TO THE START OF EXCAVATION. IF CLEARANCES ARE LESS THAN SHOWN ON THE PLAN OR TWELVE (12) INCHES, WHOEVER IS LESS, CONTACT THE ENGINEER AND THE UTILITY COMPANY BEFORE PROCEEDING WITH CONSTRUCTION. CLEARANCES LESS THAN NOTED MAY REQUIRE REVISIONS TO THIS PLAN.

**OWNER/DEVELOPER/APPLICANT**  
WILGUS/MONTROSE ASSOCIATES LLC  
7811 MONTROSE ROAD  
SUITE 200  
POTOMAC, MD 20854  
PHONE: (240) 399-1500  
ROCKING@WILGUS.COM  
RICHARD COHEN

MAP	ADC	GRID	5285
TAX MAP	G0562	ZONING CATEGORY	CR-20, CD-10, RD-10, PD-20, PD-30, PD-40, PD-50, PD-60, PD-70, PD-80, PD-90, PD-100, PD-110, PD-120, PD-130, PD-140, PD-150, PD-160, PD-170, PD-180, PD-190, PD-200, PD-210, PD-220, PD-230, PD-240, PD-250, PD-260, PD-270, PD-280, PD-290, PD-300, PD-310, PD-320, PD-330, PD-340, PD-350, PD-360, PD-370, PD-380, PD-390, PD-400, PD-410, PD-420, PD-430, PD-440, PD-450, PD-460, PD-470, PD-480, PD-490, PD-500, PD-510, PD-520, PD-530, PD-540, PD-550, PD-560, PD-570, PD-580, PD-590, PD-600, PD-610, PD-620, PD-630, PD-640, PD-650, PD-660, PD-670, PD-680, PD-690, PD-700, PD-710, PD-720, PD-730, PD-740, PD-750, PD-760, PD-770, PD-780, PD-790, PD-800, PD-810, PD-820, PD-830, PD-840, PD-850, PD-860, PD-870, PD-880, PD-890, PD-900, PD-910, PD-920, PD-930, PD-940, PD-950, PD-960, PD-970, PD-980, PD-990, PD-1000
WBSIC 2007 SHEET		SITE DATUM	
215 NW 06		HORIZONTAL	NAD83
		VERTICAL	NAD83



Scale: 1" = 60'

Sheet: 1 of 3

Project No: 1326-02-01