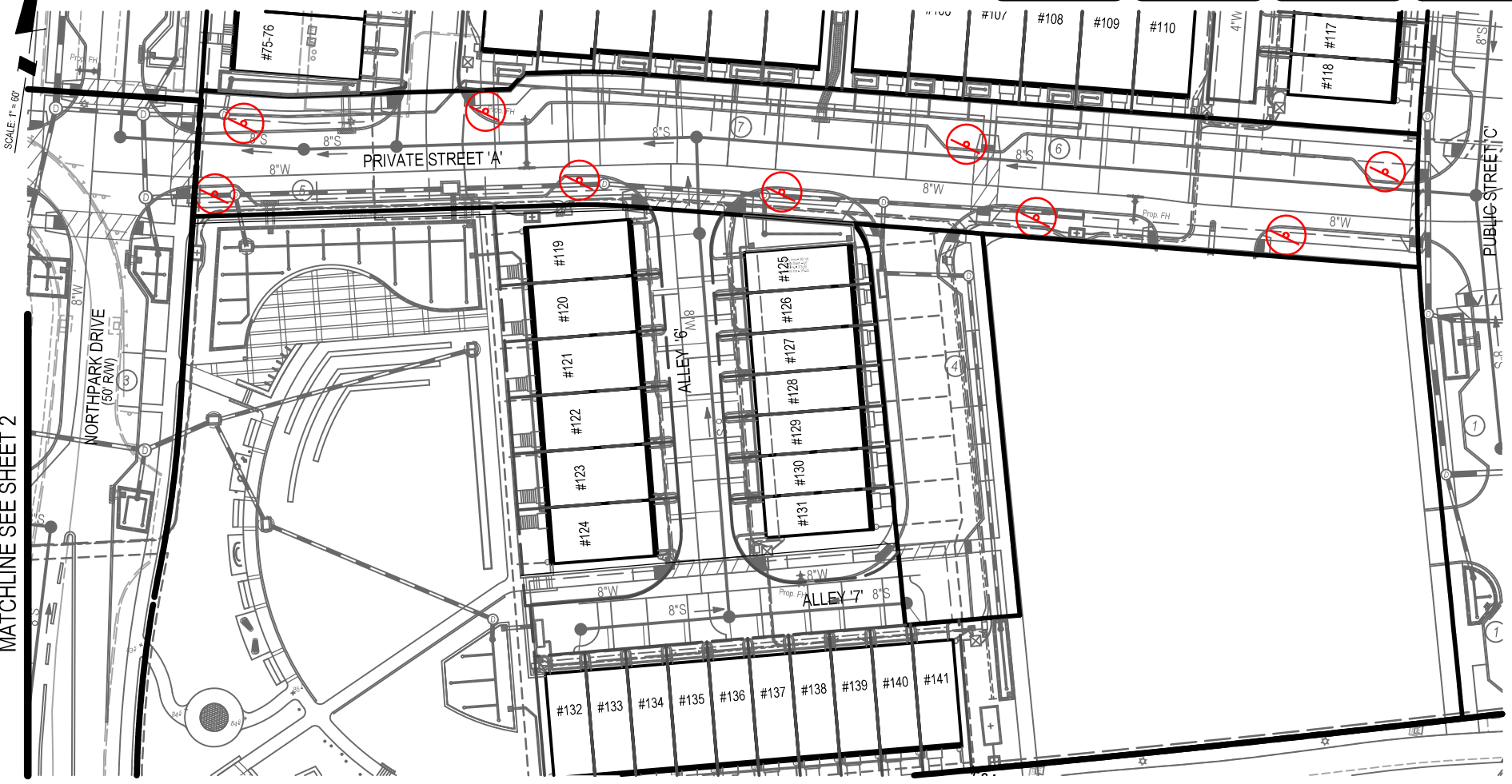


The original of this drawing document was prepared by Soltesz, Inc. (SOLTESZ). If this document was not obtained directly from SOLTESZ and/or it was transmitted electronically, SOLTESZ cannot guarantee that unauthorized changes and / or alterations were not made by others. If verification of the information contained hereon is needed, contact should be made directly with SOLTESZ. SOLTESZ makes no warranties, express or implied, concerning the accuracy of any information that has been transmitted by electronic means.

MATCHLINE SEE SHEET 2

**LEGEND**  
 FIRE LANE SIGNS

FIRE LANE NO PARKING SIGN DETAILS

**SOLTESZ, Inc.**  
 2 Research Place, Suite 100  
 Rockville, MD 20850  
 P.301.948.2750 F.301.948.9067  
 www.solteszco.com

FIRE LANE SIGN PLAN  
 NORTH PARK AT MONTROSE  
 (FORMERLY WILGUS TRACT)  
 MONTGOMERY COUNTY, MARYLAND

SHEET 3  
 OF 3

JOB NO. 1326-02-01 SCALE 1" = 60' DATE 3/17/2021