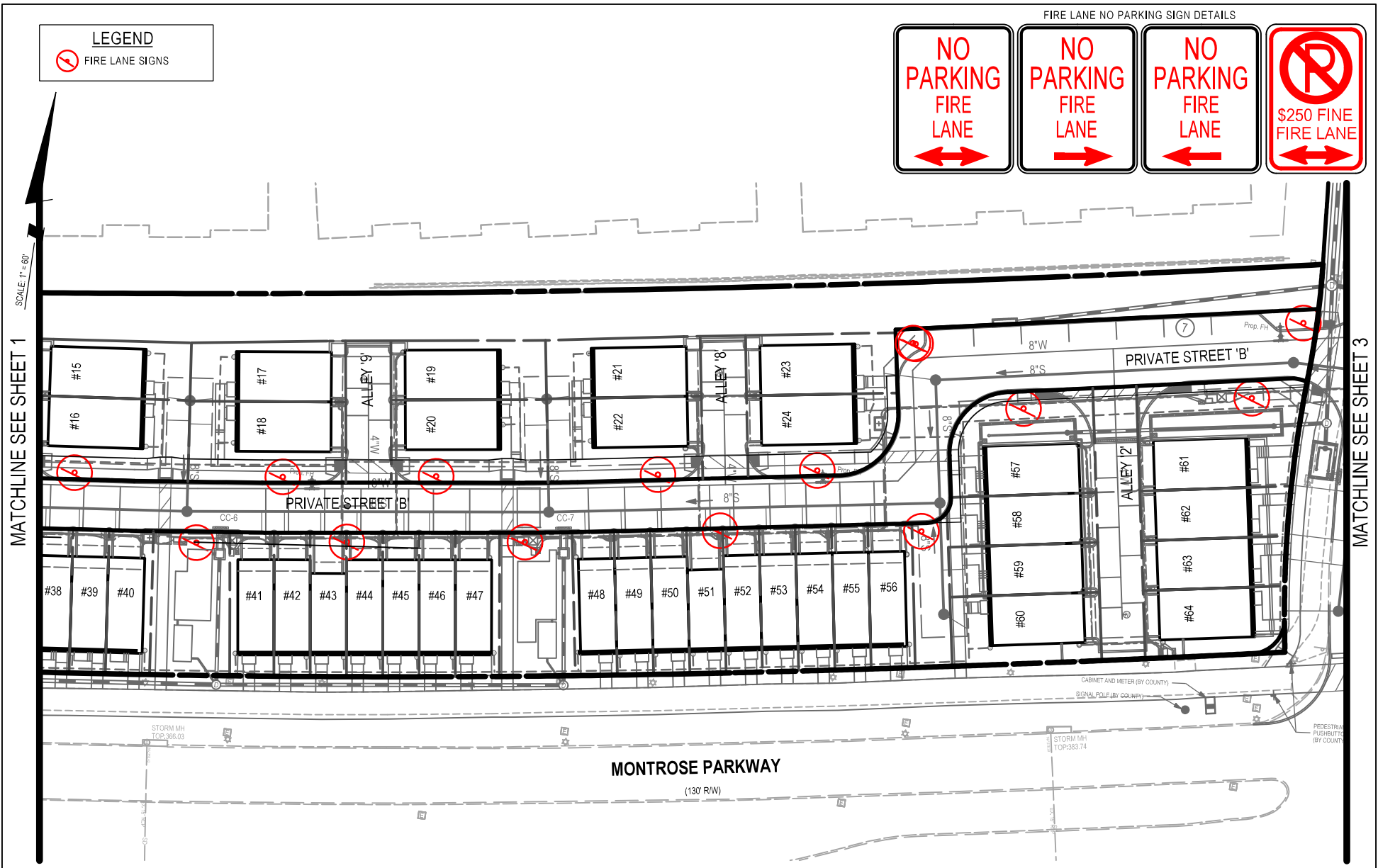


The original of this drawing document was prepared by Soltesz, Inc. (SOLTESZ). If this document was not obtained directly from SOLTESZ and/or it was transmitted electronically, SOLTESZ cannot guarantee that unauthorized changes and / or alterations were not made by others. If verification of the information contained hereon is needed, contact should be made directly with SOLTESZ. SOLTESZ makes no warranties, express or implied, concerning the accuracy of any information that has been transmitted by electronic means.

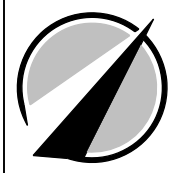


LEGEND

FIRE LANE SIGNS

MATCHLINE SEE SHEET 1

MATCHLINE SEE SHEET 3



SOLTESZ, Inc.
 2 Research Place, Suite 100
 Rockville, MD 20850
 P.301.948.2750 F.301.948.9067
 www.solteszco.com

FIRE LANE SIGN PLAN
 NORTH PARK AT MONTROSE
 (FORMERLY WILGUS TRACT)
 MONTGOMERY COUNTY, MARYLAND

SHEET 2
 OF 3

JOB NO. 1326-02-01 SCALE 1" = 60' DATE 4/19/2021