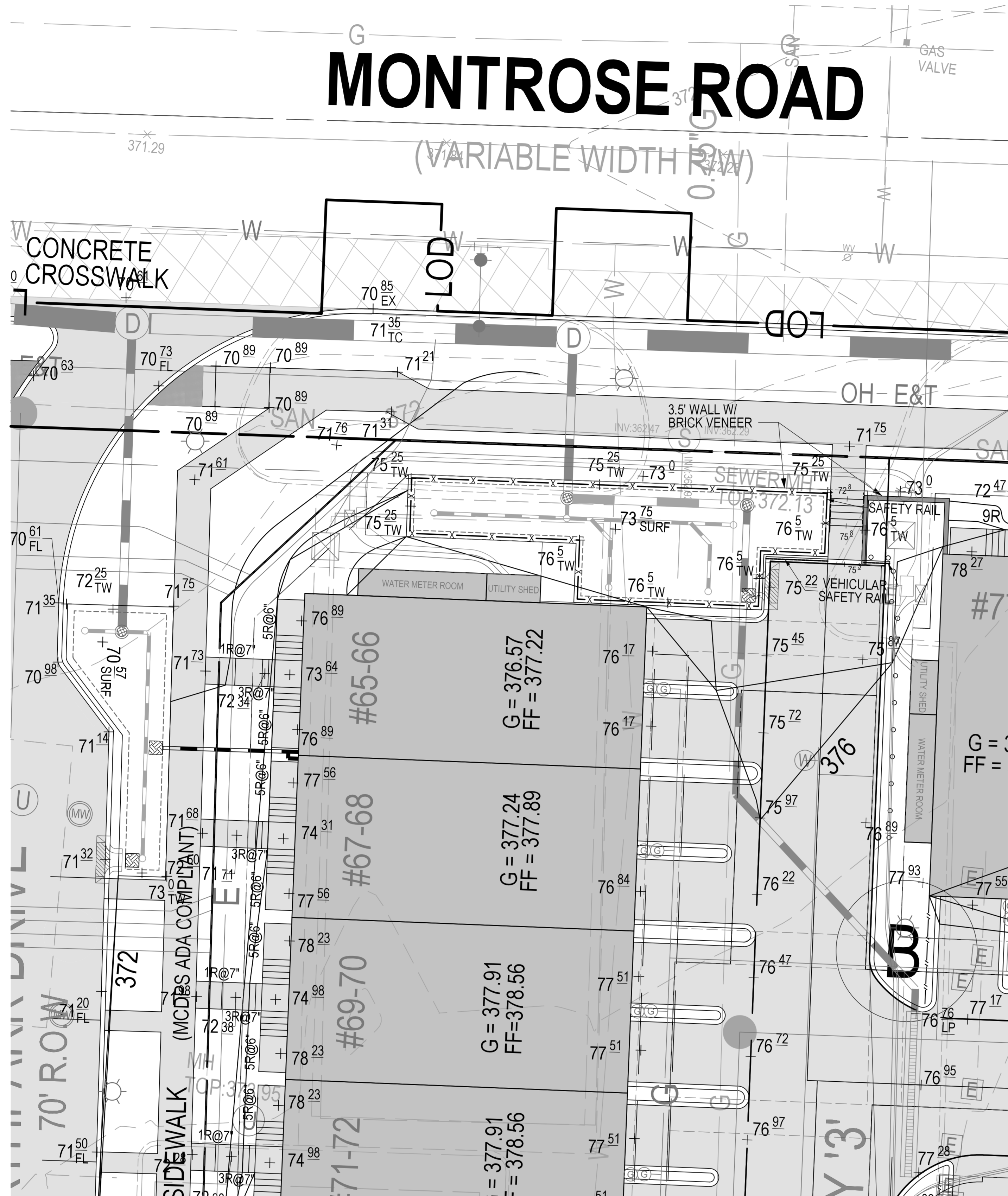
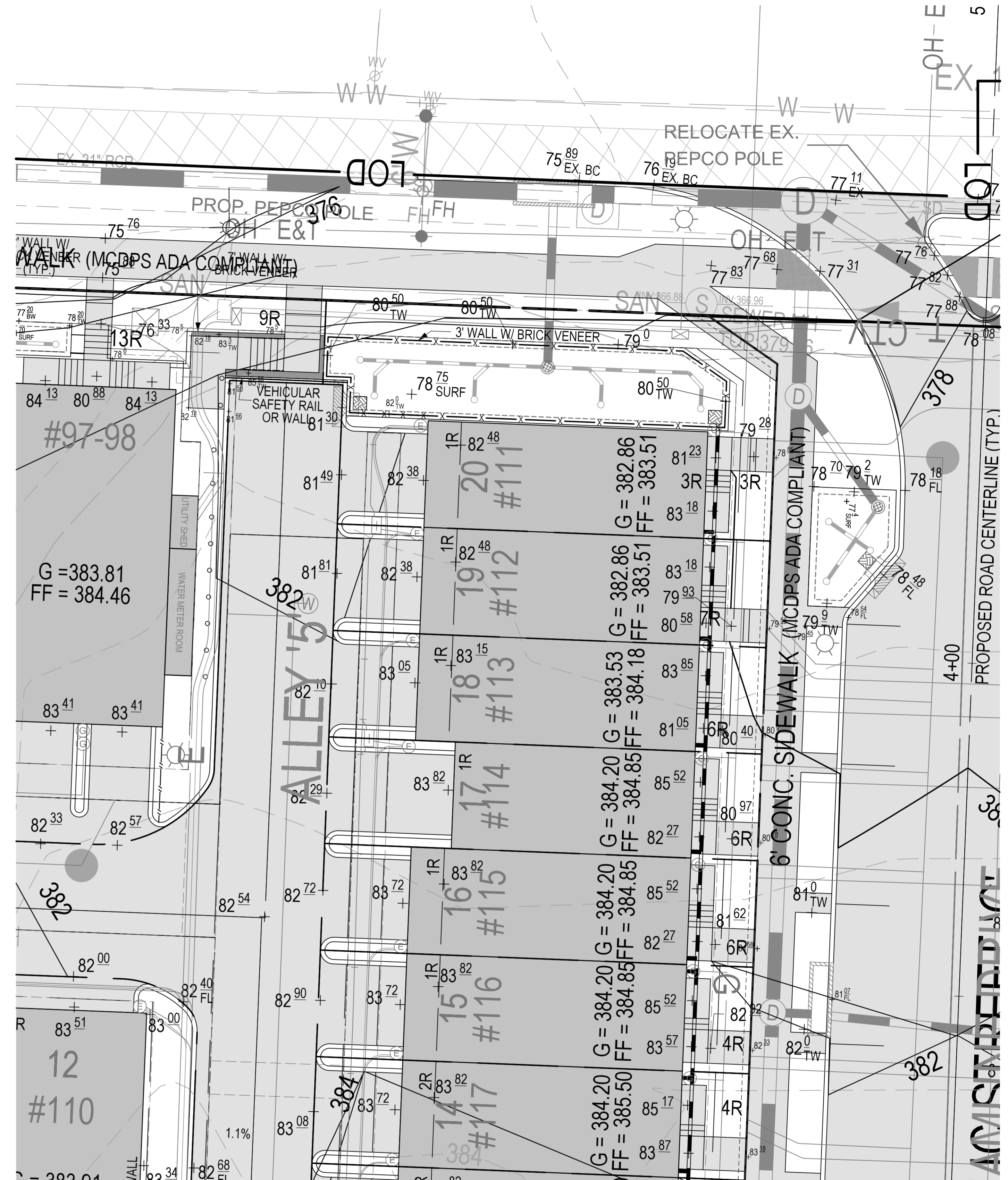


PLANNING DEPARTMENT USE ONLY (E-PLANS)



INSET A



INSET B

LEGEND:

	EXISTING GRADE
	PROPOSED GRADE
	EXISTING BUILDING
	PROPOSED BUILDING
	PROPOSED UNDERGROUND PARKING
	PROPOSED RIGHT OF WAY
	PROPOSED WATER LINE
	EXISTING 12" WATER LINE
	PROPOSED SEWER
	EXISTING SEWER
	PROPOSED PUE
	PROPOSED STORM PIPE
	EXISTING STORM PIPE
	WETLAND (TO BE REMOVED)

SOLTESZ, INC.
 Rockville Office
 2 Research Place, Suite 100
 Rockville, MD 20850
 P. 301.948.2750 F. 301.948.9067

NO.	DATE	DESIGNED	BY	DATE
1	MARCH 2021	JDS/KOL		

MISS UTILITY NOTE
 INFORMATION CONCERNING EXISTING UNDERGROUND UTILITIES WAS OBTAINED FROM AVAILABLE RECORDS. THE CONTRACTOR MUST DETERMINE THE EXACT LOCATION AND ELEVATION OF ALL EXISTING UTILITIES AND UTILITIES OR SERVICES BY ENGINEERING TESTS BY HAND, WELL IN ADVANCE OF THE START OF EXCAVATION. CONTACT "MISS UTILITY" AT 1-800-261-7777, 48 HOURS PRIOR TO THE START OF EXCAVATION. IF CLEARANCES ARE LESS THAN SHOWN ON THE PLAN OR TWELVE (12) INCHES, WHOEVER IS LESS, CONTACT THE ENGINEER AND THE UTILITY COMPANY BEFORE PROCEEDING WITH CONSTRUCTION. CLEARANCES LESS THAN NOTED MAY REQUIRE REVISIONS TO THE PLAN.

OWNER/DEVELOPER/APPLICANT
 WILGUS-MONTROSE ASSOCIATES LLC
 7811 MONTROSE ROAD
 SUITE 200
 POTOMAC, MD 20854
 PHONE: (240) 399-1500
 ROCKINGWILLCO.COM
 RICHARD COHEN

MAP	ADC	GRID	5285
TAX MAP	G0562	ZONING CATEGORY	CR-20; CD-10; RA-10; R-20; R-30; R-40; R-50; R-60; R-70; R-80; R-90; R-100; R-110; R-120; R-130; R-140; R-150; R-160; R-170; R-180; R-190; R-200; R-210; R-220; R-230; R-240; R-250; R-260; R-270; R-280; R-290; R-300; R-310; R-320; R-330; R-340; R-350; R-360; R-370; R-380; R-390; R-400; R-410; R-420; R-430; R-440; R-450; R-460; R-470; R-480; R-490; R-500; R-510; R-520; R-530; R-540; R-550; R-560; R-570; R-580; R-590; R-600; R-610; R-620; R-630; R-640; R-650; R-660; R-670; R-680; R-690; R-700; R-710; R-720; R-730; R-740; R-750; R-760; R-770; R-780; R-790; R-800; R-810; R-820; R-830; R-840; R-850; R-860; R-870; R-880; R-890; R-900; R-910; R-920; R-930; R-940; R-950; R-960; R-970; R-980; R-990; R-1000
WBSIC 200 SHEET	215 NW 06	SITE DATUM	HORIZONTAL: NAD83 VERTICAL: NAD83

PROFESSIONAL CERTIFICATION
 I HEREBY CERTIFY THAT THESE DOCUMENTS WERE PREPARED OR APPROVED BY ME, AND THAT I AM A DULY LICENSED PROFESSIONAL ENGINEER UNDER THE LAWS OF THE STATE OF MARYLAND.
 LICENSE NO. 30287 EXPIRATION DATE: 05/18/2022

SITE PLAN DETAIL GRADING INSETS - 10 SCALE

CERTIFIED SITE PLAN 820210080
NORTH PARK AT MONTROSE
(FORMERLY WILGUS TRACT)

ROCKVILLE (4TH) ELECTION DISTRICT, MONTGOMERY COUNTY, MARYLAND

DEVELOPER'S CERTIFICATE
 The Undersigned agrees to execute all the features of the Site Plan Approval No. 820210080, including Approval Conditions, Development Program, and Certified Site Plan.
 Developer's Name: WILGUS-MONTROSE ASSOCIATES LLC
 Company: RICHARD COHEN
 Address: 7811 MONTROSE ROAD, SUITE 200, POTOMAC, MD 20854
 Phone: (240) 399-1500
 Signature: *Richard Cohen*

PROJECT NO. 1325-02-01

SHEET 11.12

The original of this drawing document was prepared by Soltesz, Inc. (SOLTESZ). This document was not obtained directly from SOLTESZ, and/or it was transmitted electronically. SOLTESZ cannot guarantee that unauthorized changes and/or alterations were not made by others. If verification of the information contained herein is needed, contact should be made directly with SOLTESZ. SOLTESZ makes no warranties, express or implied, concerning the accuracy of any information that has been transmitted by electronic means.