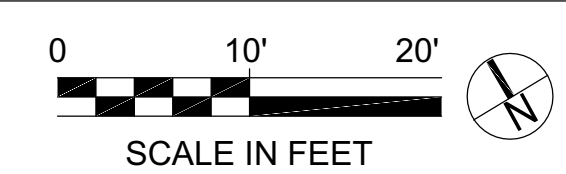
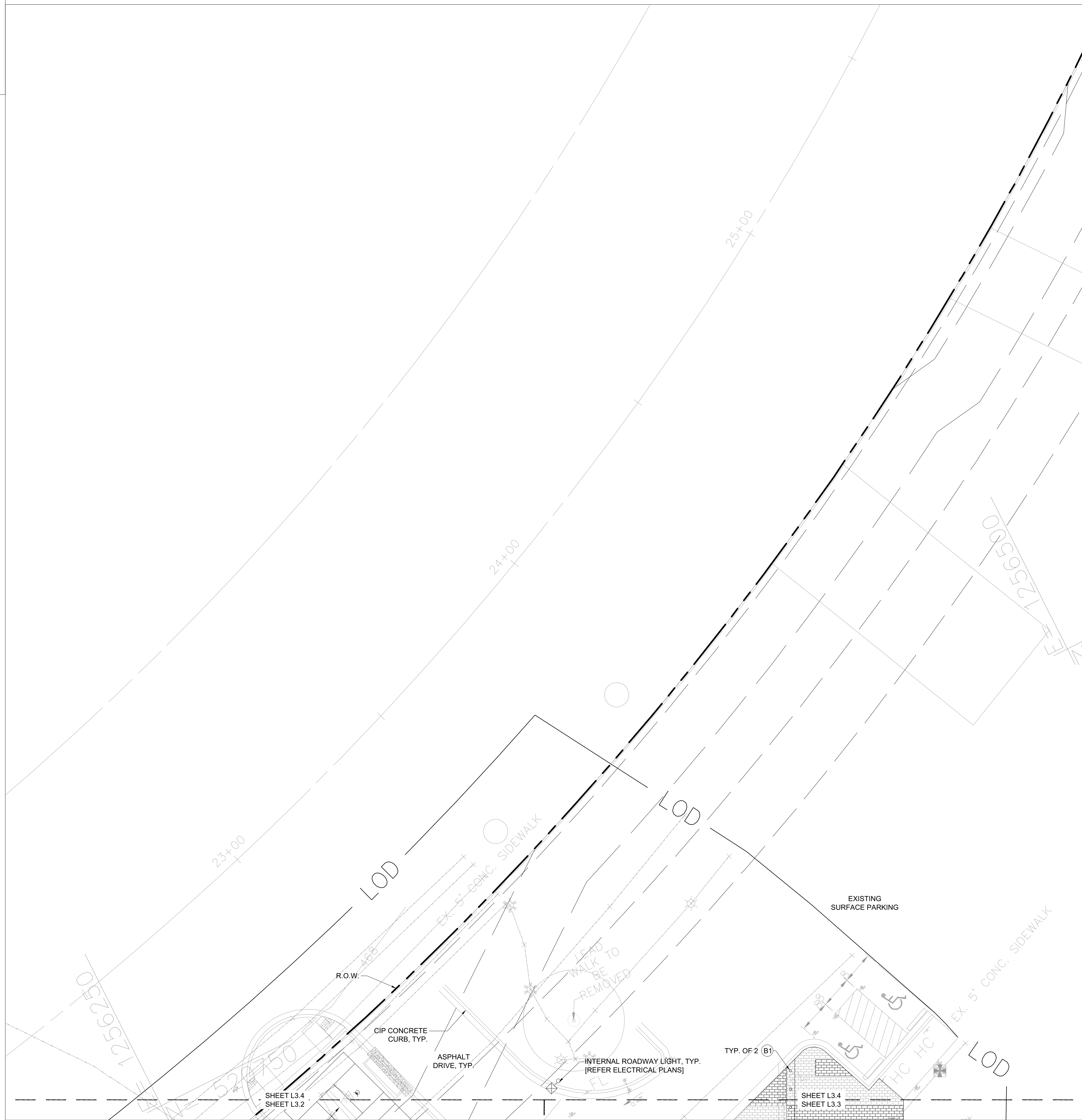


PLANNING DEPARTMENT USE ONLY (E-PLANS)

SITE PAVING LEGEND		
KEY	SYMBOL	DESCRIPTION
P1		CONCRETE PAVING TYPE 1
P2		CONCRETE PAVING TYPE 2
P3		CONCRETE UNIT PAVER A & B
P4		MULCH PATH
P5		PRECAST CONCRETE TREAD
JOINTING LEGEND		
KEY	DESCRIPTION	
	SAW CUT CONTROL JOINT	
	EXPANSION JOINT	
	DECORATIVE JOINT	
WALL LEGEND		
KEY	DESCRIPTION	
W1	BIORETENTION PLANTER WALL	
W2	PRECAST CONCRETE VENEER WALL	
W3	PLANTER CURB	
W4	PRECAST CONCRETE WALL	
W5	CIP CONCRETE WALL	
BOLLARD LEGEND		
KEY	DESCRIPTION	
B1	ARCHITECTURAL BOLLARD	
SITE FURNISHING LEGEND		
KEY	SYMBOL	DESCRIPTION
F1		BENCH
F2		TRASH/RECYCLING RECEPTACLE
F3		BICYCLE RACK
F4		WOOD SEAT TOP
F5		BISTRO TABLE
F6		PLAZA TABLE
F7		RAFT BENCH
F8		SWING BENCH
F9		PLANTER BENCH
F10		BIKE REPAIR STATION
F11		WOOD BENCH SEATING
F12		CHARGING STATION
F13		GFCI OUTLET
LIGHTING LEGEND		
KEY	SYMBOL	DESCRIPTION
CT1		CATENARY LIGHT
M1		ROADWAY LIGHT
M2		INTERNAL ROADWAY LIGHT
M3		SITE/PEDESTRIAN LIGHT
M3A		SITE/PEDESTRIAN LIGHT
M4		LIGHT POLE
M5		SITE/PEDESTRIAN POLE
Q1		WALL DOWN LIGHT
S1		TREE UP LIGHT
V1		PEDESTRIAN BOLLARD
V1A		PEDESTRIAN BOLLARD



CERTIFIED SITE PLAN 81995045G

DEVELOPER'S CERTIFICATE

The Undersigned agrees to execute all the features of the Site Plan Approval No. 81995045G, including Approval Conditions, Development Program and Certified Site Plan.
 Developer's Name: ARE-Maryland No.24, LLC. William DePippo
Company Contact Person

Address: 946 Clopper Road, Gaithersburg, MD 20878

Phone: 301-947-1770

Signature: *William DePippo*

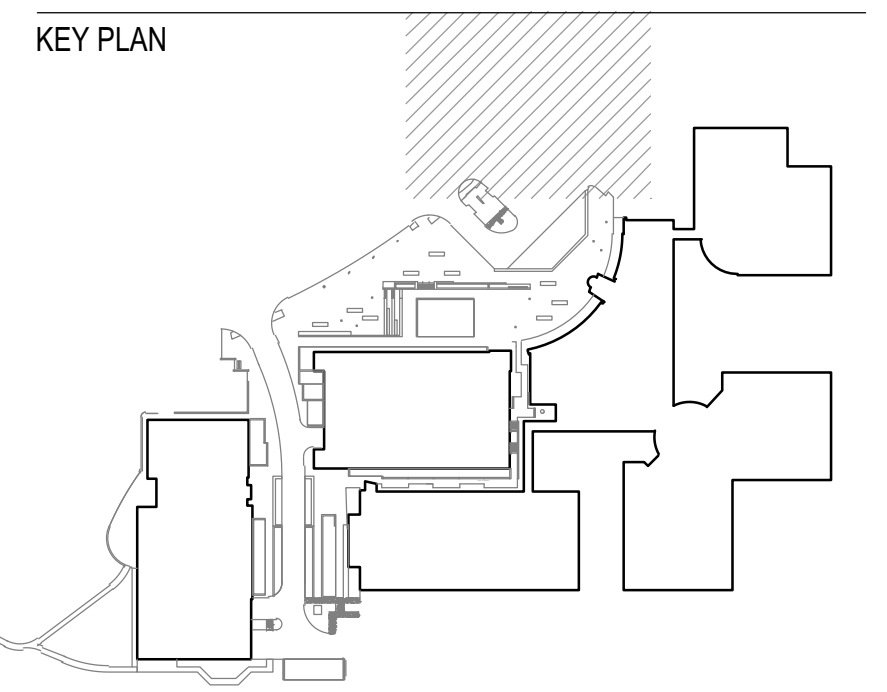
CONSULTANTS
CIVIL ENGINEERS:
 Ewing Cole
 810 Light Street
 Baltimore, MD 21230
 Phone: 410-837-5040

LAND PLANNERS & LANDSCAPE ARCHITECTS:
 W&P
 405 East Lister Alley
 Columbia, SC 29405
 Phone: 843-731-2700

STRUCTURAL ENGINEERS:
 F&S
 800 Light Street
 Baltimore, MD 21202
 Phone: 410-511-1800

M&P ENGINEERS:
 JENSEN ENGINEERING, INC.
 68117 Forest Road
 Montgomery, MD 20858
 Phone: 410-371-1200

SUSTAINABILITY CONSULTANTS:
 LOCAL PARTNERSHIPS, LLC
 1000 Light Street
 Baltimore, MD 21202
 Phone: 410-648-0100



PRINCIPAL
 ANDY KNIGHT, PLA
 PROJECT MANAGER
 RICK ESPE, PLA

Professional Certification: I certify that these documents were prepared or approved by me, and that I am a duly licensed landscape architect under the laws of the State of Maryland.
 License No: 01-4189 Expiration Date: 01/26/23

REVISIONS

NO.	BY	DESCRIPTION	DATE



ALEXANDRIA
 ALEXANDRIA REAL ESTATE EQUITIES, INC

9808 MEDICAL CENTER DRIVE
 BUILDING E & PARKING DECK

ROCKVILLE, MD 20850

DRAWN BY: DB DATE: 02-19-2021

PROJECT NO.: SCALE:

DRAWING NAME:

MATERIALS PLAN

FLOOR/SECTION/PHASE: CD DRAWING NO.: L3.4