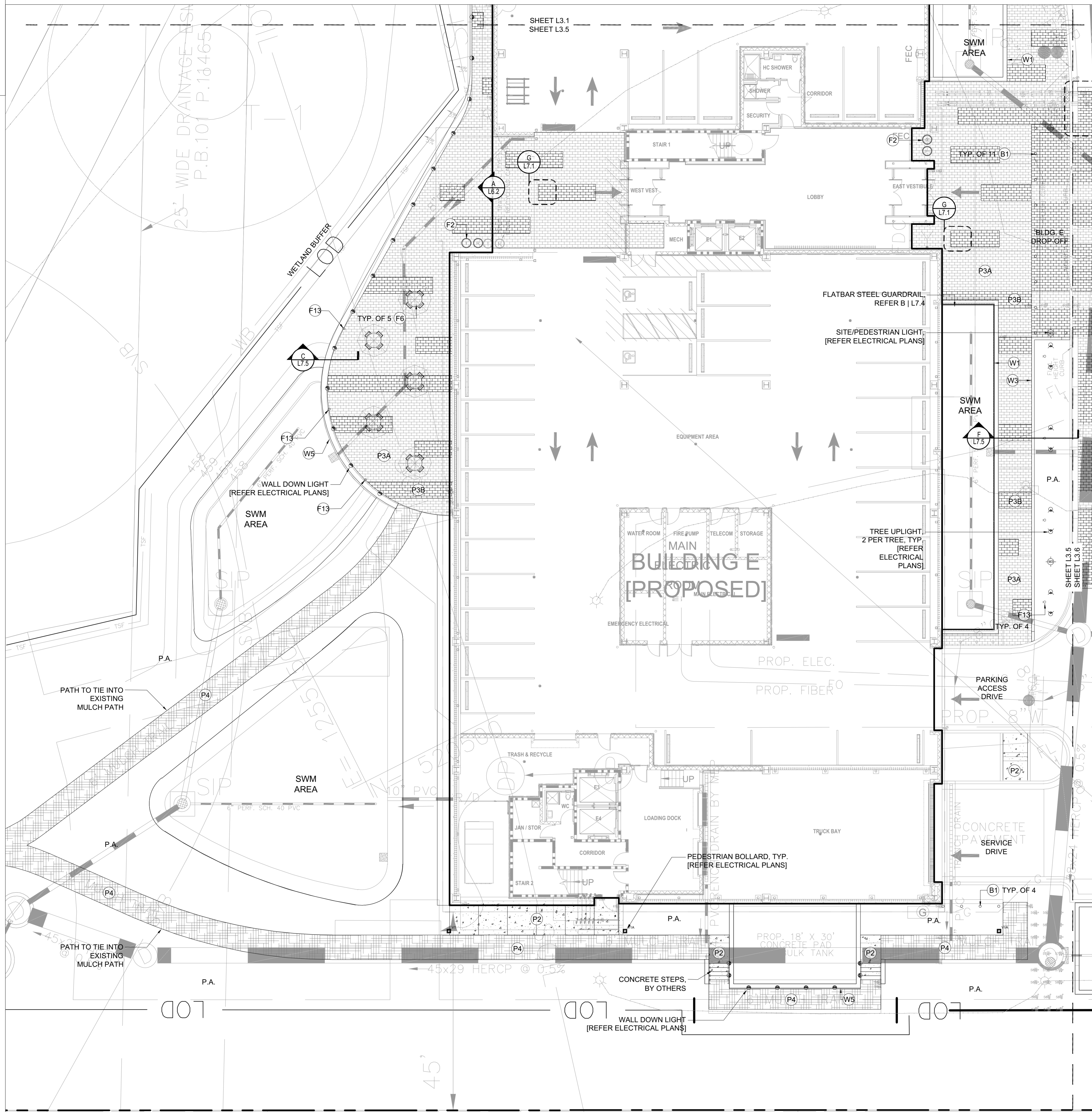


PLANNING DEPARTMENT USE ONLY (E-PLANS)

SITE PAVING LEGEND		
KEY	SYMBOL	DESCRIPTION
P1	[Symbol]	CONCRETE PAVING TYPE 1
P2	[Symbol]	CONCRETE PAVING TYPE 2
P3	[Symbol]	CONCRETE UNIT PAVEMENT A & B
P4	[Symbol]	MULCH PATH
P5	[Symbol]	PRECAST CONCRETE TREAD
JOINTING LEGEND		
KEY	DESCRIPTION	
[Symbol]	SAW CUT CONTROL JOINT	
[Symbol]	EXPANSION JOINT	
[Symbol]	DECORATIVE JOINT	
WALL LEGEND		
KEY	DESCRIPTION	
W1	BIORETENTION PLANTER WALL	
W2	PRECAST CONCRETE VENEER WALL	
W3	PLANTER CURB	
W4	PRECAST CONCRETE WALL	
W5	CIP CONCRETE WALL	
BOLLARD LEGEND		
KEY	DESCRIPTION	
B1	ARCHITECTURAL BOLLARD	
SITE FURNISHING LEGEND		
KEY	SYMBOL	DESCRIPTION
F1	[Symbol]	BENCH
F2	[Symbol]	TRASH/RECYCLING RECEPTACLE
F3	[Symbol]	BICYCLE RACK
F4	[Symbol]	WOOD SEAT TOP
F5	[Symbol]	BISTRO TABLE
F6	[Symbol]	PLAZA TABLE
F7	[Symbol]	RAFT BENCH
F8	[Symbol]	SWING BENCH
F9	[Symbol]	PLANTER BENCH
F10	[Symbol]	BIKE REPAIR STATION
F11	[Symbol]	WOOD BENCH SEATING
F12	[Symbol]	CHARGING STATION
F13	[Symbol]	GFCI OUTLET
LIGHTING LEGEND		
KEY	SYMBOL	DESCRIPTION
CT1	[Symbol]	CATENARY LIGHT
M1	[Symbol]	ROADWAY LIGHT
M2	[Symbol]	INTERNAL ROADWAY LIGHT
M3	[Symbol]	SITE/PEDESTRIAN LIGHT
M3A	[Symbol]	SITE/PEDESTRIAN LIGHT
M4	[Symbol]	LIGHT POLE
M5	[Symbol]	SITE/PEDESTRIAN POLE
Q1	[Symbol]	WALL DOWN LIGHT
S1	[Symbol]	TREE UP LIGHT
V1	[Symbol]	PEDESTRIAN BOLLARD
V1A	[Symbol]	PEDESTRIAN BOLLARD



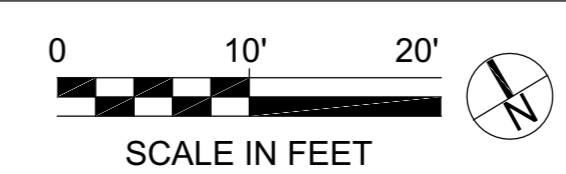
CERTIFIED SITE PLAN 81995045G

DEVELOPER'S CERTIFICATE
 The Undersigned agrees to execute all the features of the Site Plan Approval No. 81995045G, including Approval Conditions, Development Program and Certified Site Plan.
 Developer's Name: ARE-Maryland No.24, LLC. William DePippo
 Company Contact Person

Address: 946 Clopper Road, Gaithersburg, MD 20878

Phone: 301-947-1770

Signature: *William DePippo*



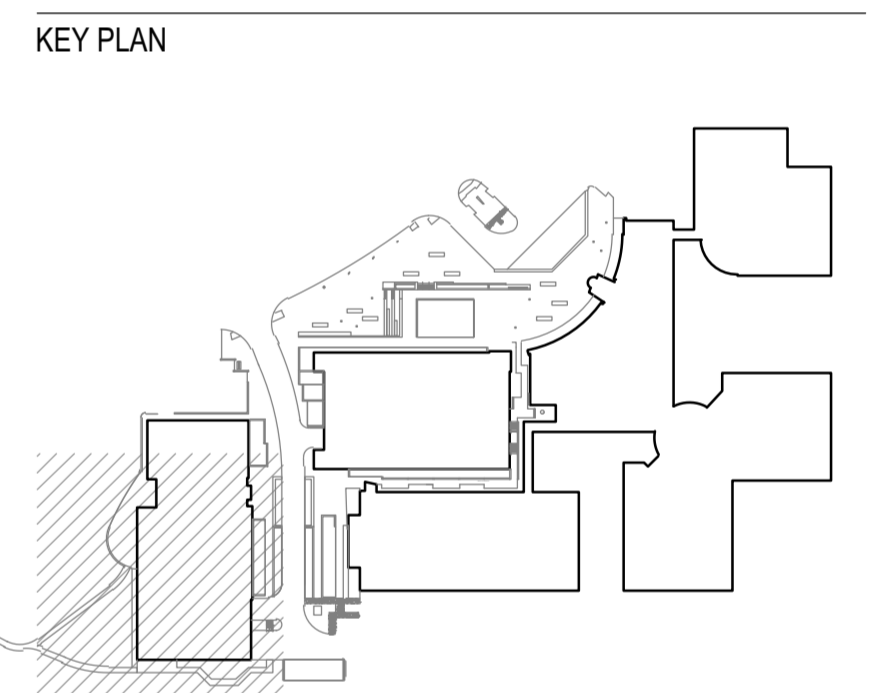
CONSULTANTS
EWINGCOLE
 CIVIL SITE ENGINEERS
 501 TECH CENTER DR
 2ND FLOOR, SUITE 100
 BALTIMORE, MD 21202
 PHONE: 410-528-1000
 FAX: 410-528-1001

LAND PLANNERS & LANDSCAPE ARCHITECTS:
 WISE
 405 SOUTH LEXINGTON
 COLLEGE PARK, MD 20740
 PHONE: 410-321-2700

STRUCTURAL ENGINEERS:
 RUSSELL HANCOCK INC
 810 LIGHT STREET
 BALTIMORE, MD 21202
 PHONE: 410-528-1000

MESHUP ENGINEERS:
 JENSEN ENGINEERING, INC
 8817 BROADWAY
 HAGERSTOWN, MD 21041
 PHONE: 410-391-1200

SUSTAINABILITY CONSULTANTS:
 LOCAL PARTNERSHIPS LLC
 1001 14TH STREET
 BALTIMORE, MD 21202
 PHONE: 410-681-0100



PRINCIPAL
 ANDY KNIGHT, PLA
 PROJECT MANAGER
 RICK ESPE, PLA

Professional Certification: I certify that these documents were prepared or approved by me, and that I am a duly licensed landscape architect under the laws of the State of Maryland.
 License No: 01-4189 Expiration Date: 01/26/23



REVISIONS

NO.	BY	DESCRIPTION	DATE

NO. BY DESCRIPTION DATE

ALEXANDRIA
 ALEXANDRIA REAL ESTATE EQUITIES, INC

9808 MEDICAL CENTER DRIVE
 BUILDING E & PARKING DECK

ROCKVILLE, MD 20850

DRAWN BY: DB DATE: 02-19-2021

PROJECT NO.: SCALE:

DRAWING NAME:

MATERIALS PLAN

FLOOR/SECTION/PHASE: CD DRAWING NO.: L3.5