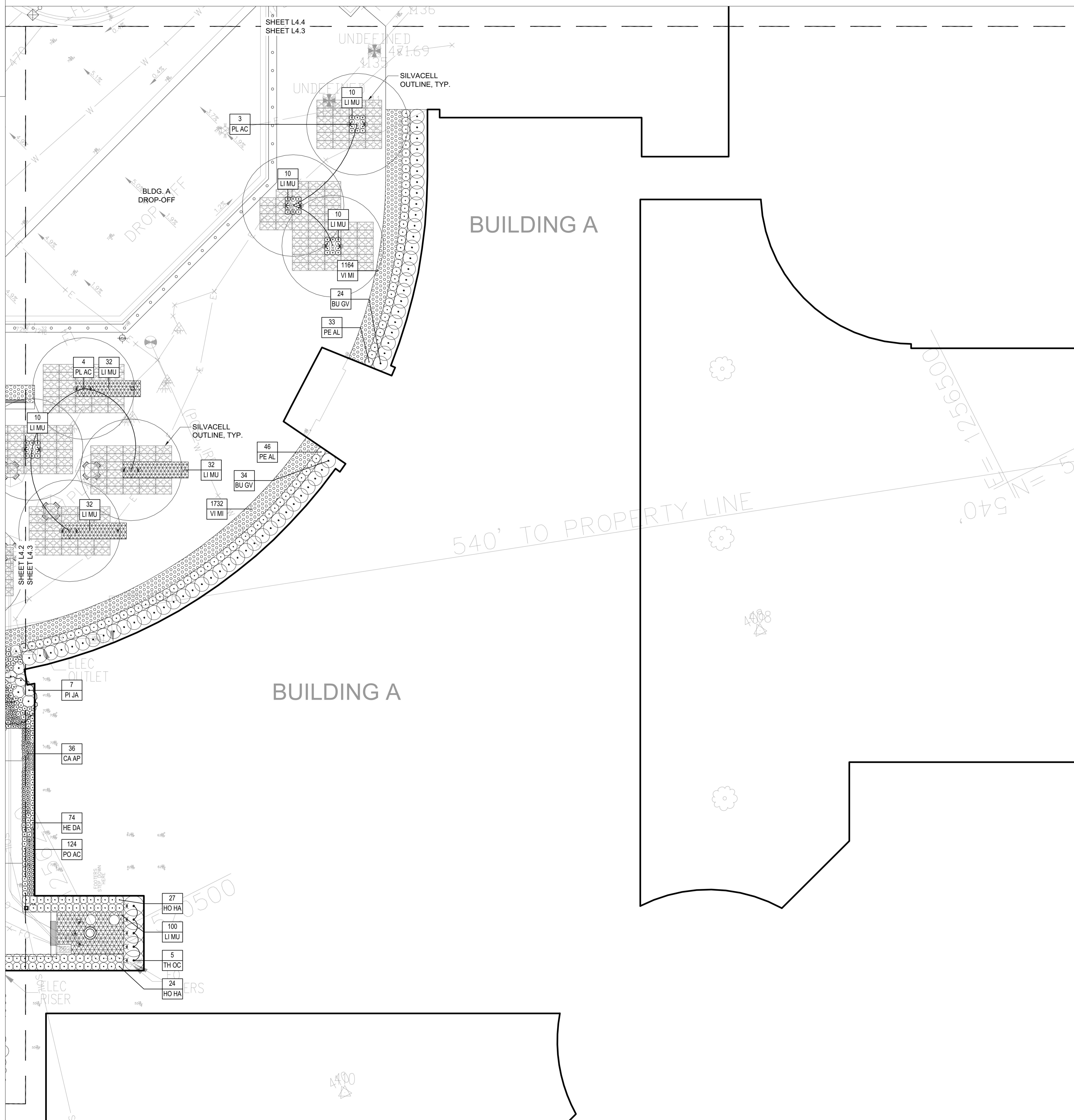


PLANNING DEPARTMENT USE ONLY (E-PLANS)



PLANTING LEGEND

KEY	SCIENTIFIC NAME	COMMON NAME
DECIDUOUS TREES		
AC RU	<i>Acer rubrum</i> 'October Glory'	October Glory Red Maple
BE NI	<i>Betula nigra</i> 'Heritage'	Heritage River Birch
CA BE	<i>Carpinus betulus</i> 'Frans Fontaine'	Frans Fontaine European Hornbeam
PL AC	<i>Carpinus x acerfolia</i> 'Morton Circle'	Exclamation London Planetree
ORNAMENTAL TREES		
AM GR	<i>Amelanchier x grandiflora</i> 'Autumn Brilliance'	Autumn Brilliance Serviceberry
CE CA	<i>Cercis canadensis</i>	Eastern Redbud
EVERGREEN SHRUBS		
BU GV	<i>Buxus</i> 'Green Velvet'	Green Velvet Boxwood
PI JA	<i>Pieris japonica</i>	Japanese Pieris
TH OC	<i>Thuja occidentalis</i>	American Arborvitae
DECIDUOUS SHRUBS		
HY PA	<i>Hydrangea paniculata</i> 'Little Lime'	Little Lime Hydrangea
GROUNDCOVERS, PERENNIALS, AND TURF MIXES		
CA AP	<i>Carex appalachica</i>	Appalachian Sedge
HE DA	<i>x Heuchera</i> 'Dayglow Pink'	Foamy Bells
HO HA	<i>Hosta</i> 'Halocon'	Halycon Hosta
LI MU	<i>Liriodendron</i> 'Royal Purple'	Royal Purple Lily Turf
NE FA	<i>Nepeta x faassenii</i> 'Walker's Low'	Walker's Low Catmint
PE AL	<i>Pennisetum alopecuroides</i> 'Hameln'	Dwarf Fountain Grass
PO AC	<i>Polystichum acrostichoides</i>	Christmas Fern
SA NE	<i>Salvia nemorosa</i> 'Caradonna'	Meadow Sage
VI MI	<i>Vinca minor</i>	Periwinkle

PLANTING LEGEND

SYMBOL	DESCRIPTION
[Symbol]	SEEDED LAWN
[Symbol]	SODDED LAWN
[Symbol]	WILDFLOWER SEED MIX
[Symbol]	STORMWATER MANAGEMENT AREA BIORETENTION SEED MIX
[Symbol]	STORMWATER MANAGEMENT AREA PERENNIAL PLANT MIX
[Symbol]	PERIWINKLE
[Symbol]	LILYTURF

PLANTING NOTES

1. SECURE PLANT MATERIAL AS SPECIFIED ON PLANS. SUBSTITUTIONS FOR PLANT MATERIALS WILL NOT BE ALLOWED WITHOUT PRIOR WRITTEN APPROVAL BY THE LANDSCAPE ARCHITECT.
2. PROVIDE PLANT SAMPLES OR PHOTOGRAPHS OF EACH PLANT SPECIFIED TO THE LANDSCAPE ARCHITECT FOR COMPLIANCE REVIEW PRIOR TO INSTALLATION.
3. PROTECT PLANT MATERIAL DURING DELIVERY TO PREVENT DAMAGE TO ROOT BALLS, TRUNKS, BRANCHES AND THE DESICCATION OF LEAVES. PROTECT PLANT MATERIAL DURING SHIPPING WITH SHADE CLOTH OR SHIP WITH ENCLOSED TRANSPORT. MAINTAIN PROTECTIONS AND HEALTH OF PLANT MATERIAL STORED ON SITE. HANDLE TREES WITH NYLON STRAPS. NO CHAINS OR CABLES WILL BE ALLOWED. REMOVE UNACCEPTABLE PLANT MATERIAL IMMEDIATELY FROM THE SITE.
4. PLANT MATERIAL DELIVERED TO THE SITE IS SUBJECT TO THE REVIEW OF THE LANDSCAPE ARCHITECT BEFORE, DURING AND AFTER INSTALLATION.
5. VERIFY PLANTING PRODUCTS, PLANT MATERIAL, AND PLANT QUANTITIES DELIVERED TO THE SITE MATCH WHAT IS INDICATED ON THE PLANS AND SPECIFICATIONS.
6. STAKE BED LINES AND TREE LOCATIONS FOR THE LANDSCAPE ARCHITECT'S REVIEW PRIOR TO INSTALLATION. PLANTING PROCEDURES ARE SUBJECT TO THE REVIEW OF THE LANDSCAPE ARCHITECT AND THE CONTRACTOR SHALL CORRECT ANY DEFICIENCIES FOUND AT NO ADDITIONAL COST TO THE OWNER.
7. REFER TO THE PLANTING DETAILS FOR MINIMUM SIZE AND WIDTH OF PLANTING PITS AND BEDS, GUYING AND STAKING, MULCHING, AND OTHER PLANTING REQUIREMENTS.
8. ROOT BALLS SHALL CONFORM TO THE SIZE STANDARDS SET FORTH IN 'AMERICAN STANDARDS FOR NURSERY STOCK'.
9. TEST FILL EACH TREE AND PLANTING PIT WITH WATER, PRIOR TO PLANTING TO ASSURE PROPER SOIL PERCOLATION. PITS WHICH DO NOT ADEQUATELY DRAIN SHALL BE FURTHER SCARIFIED ALONG OUTER EDGES AND SIDES OF PIT. DO NOT DISTURB AREA SUPPORTING TREE BALL. REPEAT TEST. ALLOWANCES WILL NOT BE MADE FOR PLANT MATERIAL LOSS DUE TO IMPROPER DRAINAGE.
10. PLANT MATERIALS, INCLUDING RELOCATED PLANT MATERIAL, SHALL BE PLANTED IN A PROFESSIONAL MANNER TYPICAL TO THE INDUSTRY STANDARDS OF THE AREA TO ASSURE COMPLETE SURVIVABILITY OF PLANT MATERIALS AS WELL AS TO PROVIDE AN AESTHETICALLY APPROVED PROJECT.
11. REMOVE PLANTING AND LANDSCAPE DEBRIS FROM THE PROJECT SITE AND SWEEP AND WASH CLEAN PAVED AND FINISHED SURFACES AFFECTED BY THE LANDSCAPE INSTALLATION.
12. PLANTING AREAS SHALL BE WEED FREE PRIOR TO PLANTING INSTALLATION AND MAINTAINED WEED FREE THROUGH FINAL ACCEPTANCE.
13. ALL LAWN AND LANDSCAPE BEDS TO HAVE A COMPLETE IRRIGATION SYSTEM COMPRISED OF SPRAY/ROTOR HEADS AND SUBSURFACE DRIP.
14. MULTI-ZONE SYSTEM DESIGNED TO SUPPORT BOTH TREES AND PERENNIALS. SYSTEM TO INCLUDE CONTROLLER CAPABLE OF USING INPUT FROM RAIN AND MOISTURE SENSORS AS WELL AS LOCAL WEATHER DATA.
15. MAINLINE TO EXTEND FROM ROOM WITHIN BUILDING.
16. STORMWATER PLANTINGS SHALL BE PER MCDPS.

CONSULTANTS
EWING COLE
 CIVIL ENGINEERS
 501 E. CHESAPEAKE ST.
 BALTIMORE, MD 21202
 PHONE: 410-837-5040
 FAX: 410-234-8010

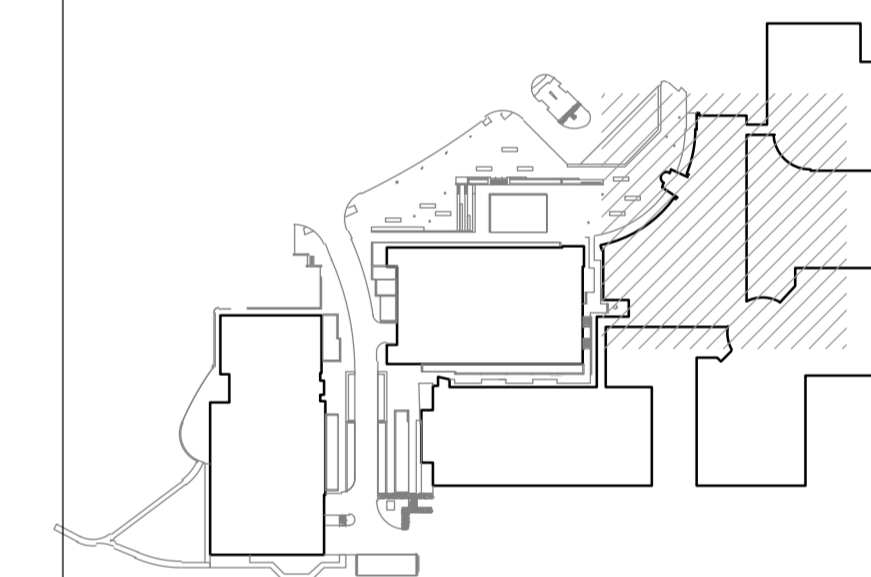
LAND PLANNERS & LANDSCAPE ARCHITECTS:
 WIFE
 405 East Lenoir Alley
 Columbia, MD 21046
 Phone: 410-621-2700

STRUCTURAL ENGINEERS:
 ASHLEY ENGINEERING, INC.
 810 Light Street
 Baltimore, MD 21202
 Phone: 410-511-1111

MERFFY ENGINEERS:
 JAMES R. MERFFY, INC.
 8811 Rock Hill
 Nottingham, MD 21088
 Phone: 410-551-1200

SUSTAINABILITY CONSULTANTS:
 LOCAL PARTNERSHIPS, LLC
 1000 Light Street
 Baltimore, MD 21202
 Phone: 410-681-0100

KEY PLAN



PRINCIPAL
 ANDY KNIGHT, PLA
 PROJECT MANAGER
 RICK ESPE, PLA



Professional Certification: I certify that these documents were prepared or approved by me, and that I am a duly licensed landscape architect under the laws of the State of Maryland.
 License No: 01-4189 Expiration Date: 01/26/23

REVISIONS

NO.	BY	DESCRIPTION	DATE

NO. BY DESCRIPTION DATE



ALEXANDRIA
 ALEXANDRIA REAL ESTATE EQUITIES, INC
 9808 MEDICAL CENTER DRIVE
 BUILDING E & PARKING DECK
 ROCKVILLE, MD 20850

DRAWN BY: DB DATE: 02-19-2021

PROJECT NO.: SCALE:

DRAWING NAME: LANDSCAPE PLAN

FLOOR/SECTION/PHASE: CD DRAWING NO.: L4.3

CERTIFIED SITE PLAN 81995045G

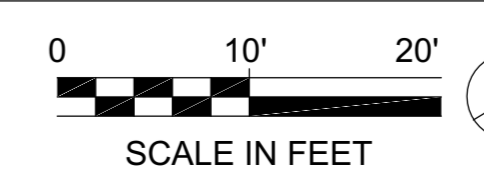
DEVELOPER'S CERTIFICATE

The Undersigned agrees to execute all the features of the Site Plan Approval No. 81995045G, including Approval Conditions, Development Program and Certified Site Plan.

Developer's Name: ARE-Maryland No.24, LLC. William DePippo Company Contact Person

Address: 946 Clopper Road, Gaithersburg, MD 20878

Phone: 301-847-1770
 Signature: *William DePippo*



SCALE IN FEET