

LEGEND

- EXISTING TREE TO REMAIN
- EXISTING PROPERTY BOUNDARY
- EXISTING ADJ. PROPERTY BOUNDARY
- EXISTING CONTOUR
- PROPOSED BUILDING ADDITION
- STORMWATER MANAGEMENT FACILITY
- PROPOSED CANOPY TREE
- PROPOSED SHRUB
- PROPOSED GROUNDCOVER

PLANTING SCHEDULE

TASKS	MONTHS											
	JAN	FEB	MAR	APR	MAY	JUNE	JULY	AUG	SEPT	OCT	NOV	DEC
TRANSPLANT OF 2" DBH OR GREATER												
PLANTING SEEDINGS, WHIPS												
MINIMUM MONITORING			*				*					*
FERTILIZER * (IF NEEDED)												
WATER **												
PRUNING												

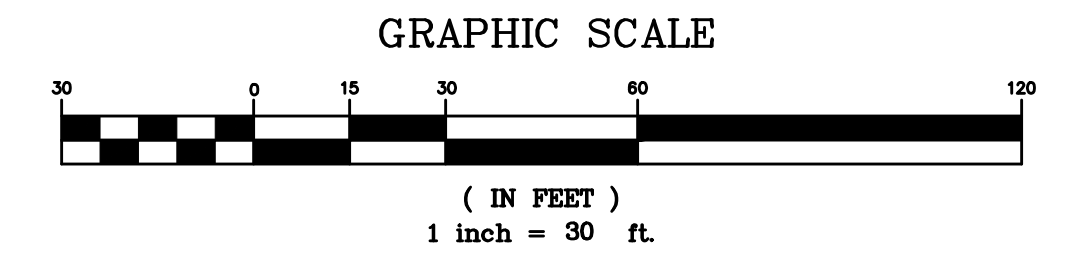
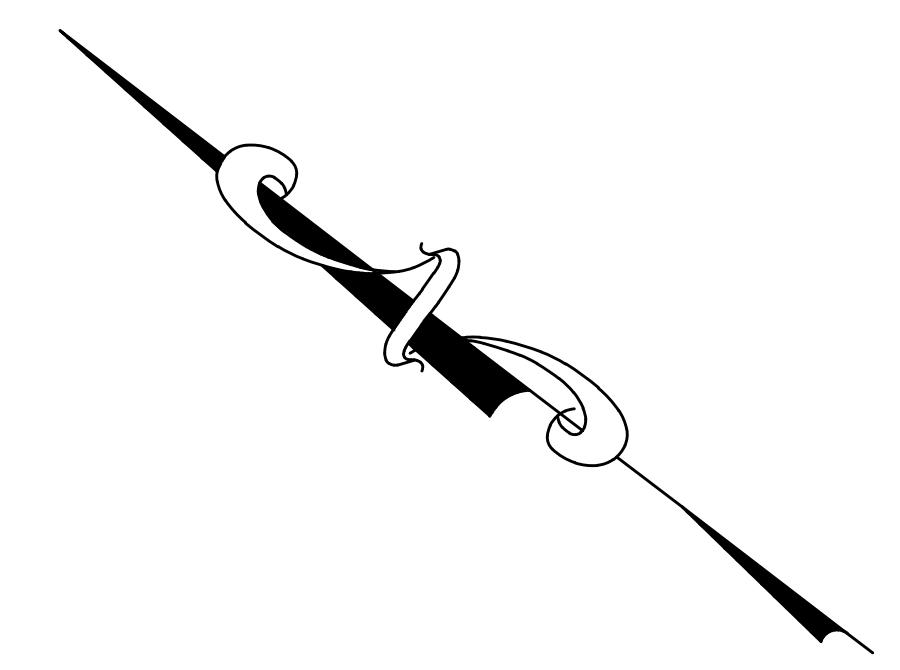
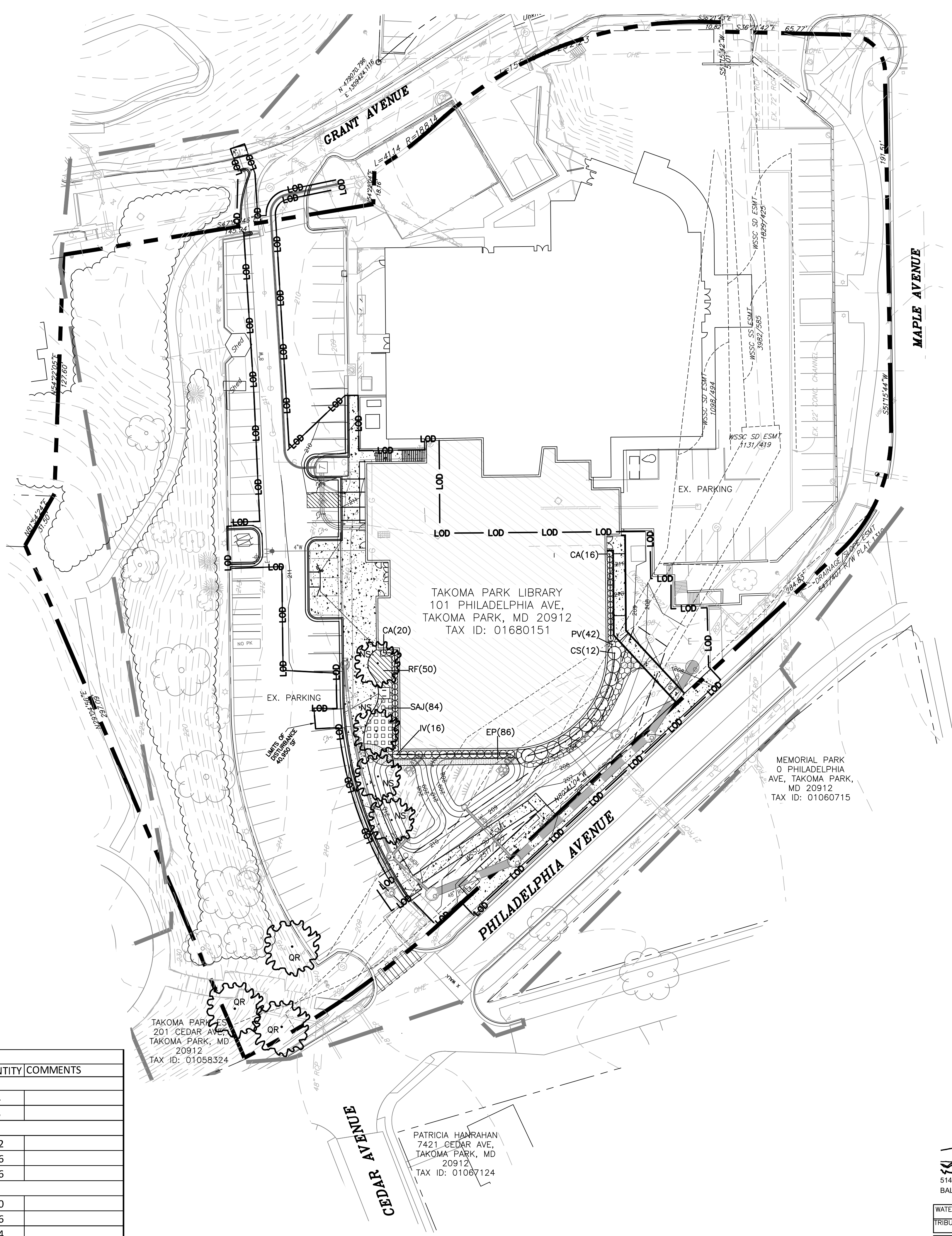
- KEY**
- * ACTIVITIES DURING THESE MONTHS ARE DEPENDENT UPON GROUND CONDITIONS
 - GREATLY RECOMMENDED
 - RECOMMENDED WITH ADDITIONAL CARE
 - RECOMMENDED
 - * DEPENDENT UPON SITE CONDITIONS
 - ** DEPENDENT UPON SITE CONDITIONS; WEEKLY WATERING IS GREATLY RECOMMENDED FROM MAY THROUGH OCTOBER UNLESS WEEKLY RAINFALL EQUALS 1"

NOTES:
 The planting and care of trees is most successful when coordinated with the local climatic conditions. This calendar summarizes some of the recommended time frames for basic reforestation and stress reduction activities.

LANDSCAPE PLANTING PLAN SCHEDULE

KEY	BOTANICAL NAME	COMMON NAME	SIZE	FORM	SPACING	QUANTITY	COMMENTS
TREES:							
NS	<i>Nyssa sylvatica</i>	Black Gum	3" cal.	B&B	AS SHOWN	4	
QR	<i>Quercus rubra</i>	Red Oak	3" cal.	B&B	AS SHOWN	3	
SHRUBS:							
CS	<i>Cornus sericea 'Cardinal'</i>	Red-Twig Dogwood	3 gal.	Cont.	AS SHOWN	12	
CA	<i>Clethra alnifolia 'Hummingbird'</i>	Hummingbird Summersweet	3 gal.	Cont.	AS SHOWN	36	
IV	<i>Itea virginica 'Henry's Garnet'</i>	Henry's Garnet Sweetspire	3 gal.	Cont.	AS SHOWN	16	
GROUNDCOVERS:							
RF	<i>Rudbeckia fulgida</i>	Black-Eyed Susan	1 gal.	Cont.	24" o.c.	50	
EP	<i>Echinacea Purpurea 'Magnus'</i>	Purple Coneflower	1 gal.	Cont.	24" o.c.	86	
SAJ	<i>Sedum 'Autumn Joy'</i>	Showy Stonecrop Sedum	1 gal.	Cont.	24" o.c.	84	
PV	<i>Panicum virgatum 'Shenandoah'</i>	"Shenandoah Switch Grass	1 gal.	Cont.	36" o.c.	42	

NOTE: SOD ALL AREAS WITHIN LOD.



NORTON LAND DESIGN
 LANDSCAPE ARCHITECTURE + ENVIRONMENTAL PLANNING
 5146 DORSEY HALL DRIVE, 2ND FLOOR
 BALTIMORE, MARYLAND 21204
 WWW.NORTONLANDDESIGN.COM

WATER CLASS	1	WATERSHED	SLIGO CREEK	FEMA FLOODPLAIN MAP PANEL #	24031C0460D
TRIBUTARY					
TAX MAP	JN342	200 SHEET	209NW01	ADC MAP PAGE	37 GRID D-12
SCALE	AS SHOWN	DATE	MARCH 2021	PROJ. NO.	16-127
DRAWN BY:	BP	CHECKED BY:	MN	SHEET 1 OF 2	DRAWING NUMBER: L-2.1

TAKOMA PARK LIBRARY RENOVATION
 101 PHILADELPHIA AVE
 TAKOMA PARK, MARYLAND
 MONTGOMERY COUNTY

LANDSCAPE PLANTING PLAN

NO.	DATE	PRELIMINARY	DESCRIPTION	ISSUE
1	08/14/20			

K:\HLD PROJECTS\16-127 drawings\16-127 LS.dwg PLOTTED Mar_09_2021