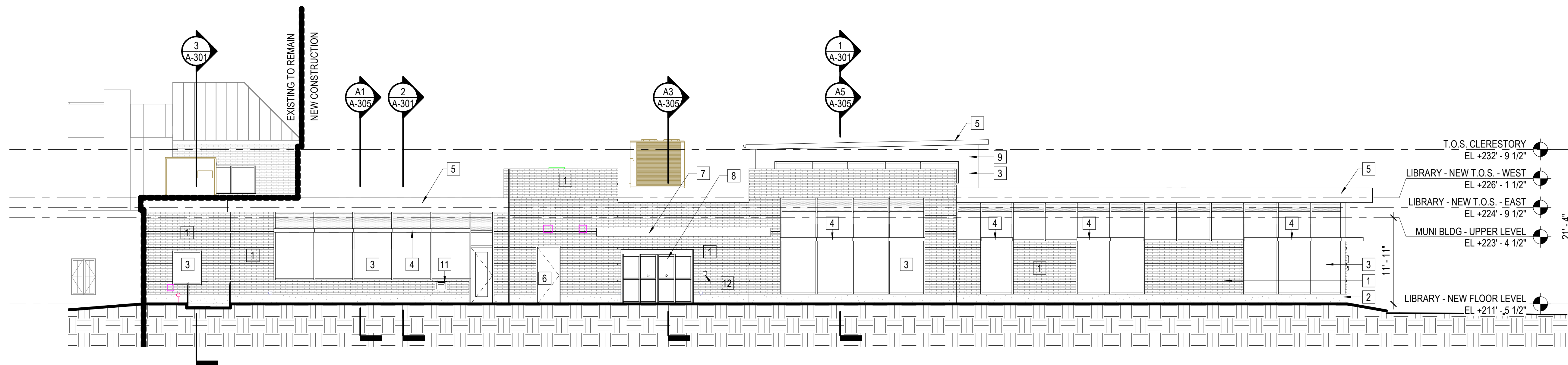
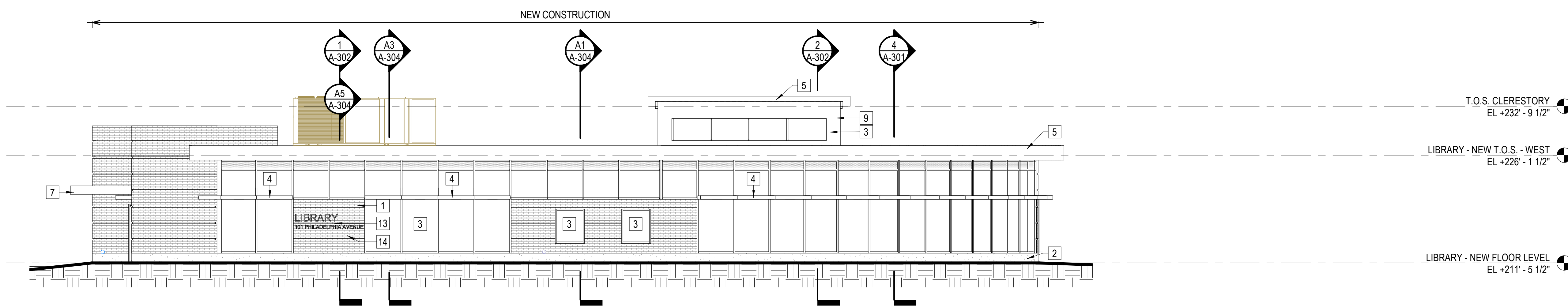


ELEVATION KEYNOTES

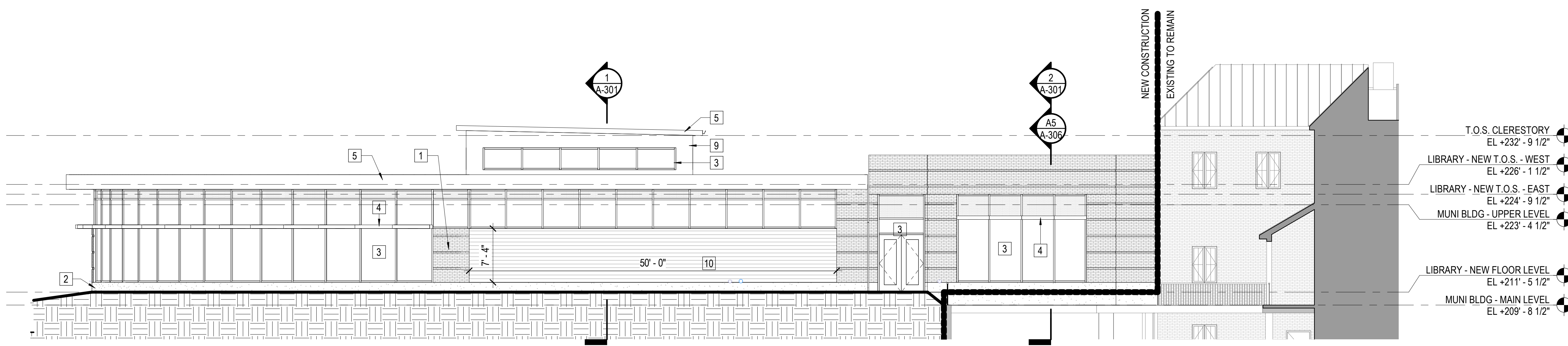
- 1 BRICK - SEE SPEC 042000
- 2 CAST STONE - SEE SPEC 042700
- 3 CURTAINWALL SYSTEM WITH INSULATED GLAZING UNIT - SEE SPEC 084413 & 088000
- 4 INTEGRATED CURTAINWALL SUN SHADE DEVICE - SEE SPEC 107113
- 5 METAL FASCIA - SEE WALL SECTION
- 6 HM DOOR AND FRAME - SEE DOOR SCHEDULE
- 7 ENTRY CANOPY - SEE WALL SECTION
- 8 SLIDING AUTOMATIC DOOR - SEE DOOR SCHEDULE
- 9 INSULATED METAL WALL PANEL - SEE SPEC 074213
- 10 RELOCATED MURAL - COORDINATE WITH OWNER
- 11 THRU WALL BOOK DROP
- 12 KNOX BOX MODEL 3200 RECESSED IN MASONRY. COLOR: BLACK
- 13 DIMENSIONAL LETTER SIGNAGE. 12" HIGH. SEE SPEC 101419
- 14 DIMENSIONAL LETTER SIGNAGE. 6" HIGH. SEE SPEC 101419



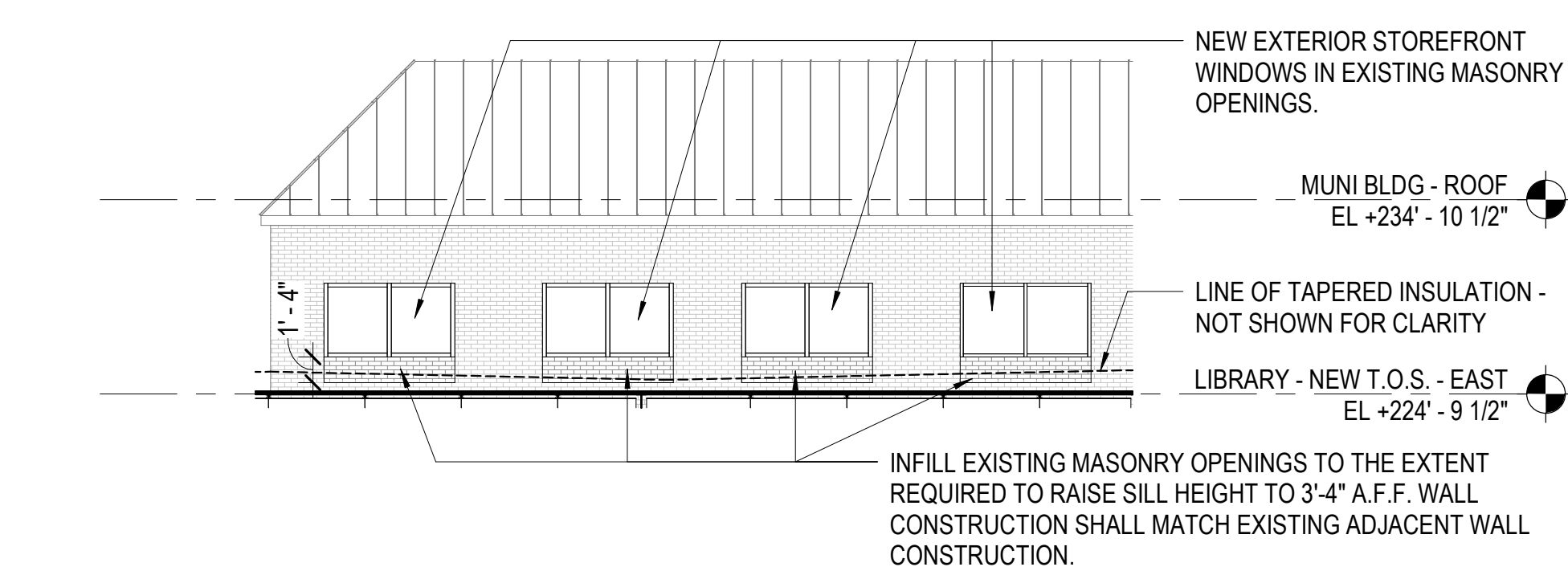
1 NORTH ELEVATION
A-201 SCALE: 1/8" = 1'-0"



2 WEST ELEVATION
A-201 SCALE: 1/8" = 1'-0"



3 SOUTH ELEVATION
A-201 SCALE: 1/8" = 1'-0"



4 WEST ELEVATION @ EXISTING OFFICES
A-201 SCALE: 1/8" = 1'-0"



MARK	DATE	BY	DESCRIPTION

DATE	PROJECT	DESIGNED	DRAWN	CHECKED	GSL	BTH	KDL
10/05/2020	13326-02						

Professional Certification: I certify that these drawings were prepared or approved by me, and that on a duly licensed architect under the laws of the State of Maryland, license number 18837 - registration date 12/12/2020.

RRMM ARCHITECTS, PC
2900 South Quince Street, Suite 710
Arlington, Virginia 22206
(703)998-0101



CITY OF TAKOMA PARK
TAKOMA PARK MARYLAND LIBRARY REPLACEMENT
101 PHILADELPHIA AVENUE, TAKOMA PARK, MD 20912

BUILDING ELEVATIONS

SHEET
A-201