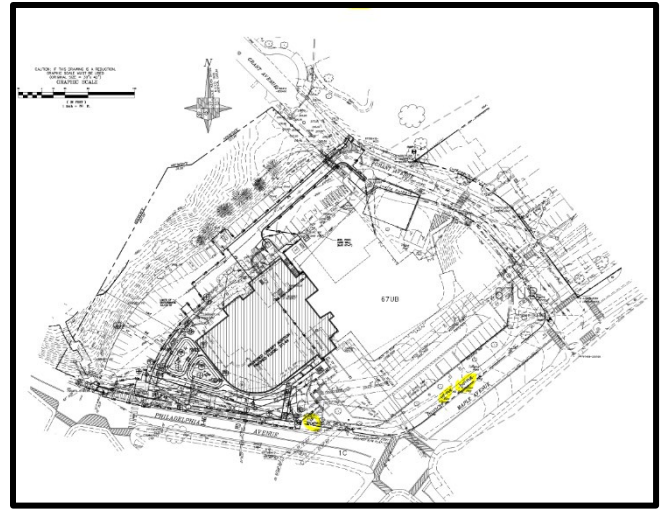


PUBLIC NOTICE

PLANNING BOARD HEARING

On **October 28, 2021**, the Montgomery County Planning Board will conduct a virtual public hearing at 2425 Reedie Drive, Wheaton, Maryland on the following development plan:

Name of Plan: Takoma Park Public Library
Mandatory Referral Number: MR2021018
Zoning: R-60 zone
Site Area: 3.73 acres
Master Plan: 2000 Takoma Park Master Plan
Proposed Use: Renovation/reconstruction of the public library building; located at 101 Philadelphia Avenue.



To review a written report by planners regarding the Mandatory Referral application, check the approximate hearing time, or to sign up to testify, go to our website at montgomeryplanningboard.org/agendas/. You may also sign up to testify by calling 301.495.4605. The public can still participate in the Planning Board hearing online at www.montgomeryplanningboard.org while our building is closed, and our daily work operations are still in effect.

For more information or to comment on the development plans, please contact Marco Fuster, the Mandatory Referral Plan reviewer, via email at Marco.Fuster@montgomeryplanning.org or by phone at 301.495.4521.

Thank you for your interest in Montgomery County's future development.

The Maryland-National Capital Park and Planning Commission encourages the participation of individuals with disabilities in its programs and facilities. For support in using facilities, staff support or adaptive equipment, contact the Planning Department ADA Coordinator. Provide requests one week in advance of event: Christine.McGrew@montgomeryplanning.org | (301) 495-1324 | 301-495-1331 (TTY) | 7-1-1 or 800-552-7724 (MD Relay)

PUBLIC NOTICE

Montgomery County Planning Department
M-NCPPC
2425 Reedie Drive
Wheaton, MD 20902

Montgomery County Planning Board HEARING NOTICE Takoma Park Public Library OCTOBER 28, 2021

(view additional information on the back of this card)

Written comments should include the agenda item and must be received by 12 noon on Wednesday morning before a scheduled Thursday hearing. They may be emailed to Montgomery County Planning Board Chair Casey Anderson at mcp-chair@mncppc-mc.org; mailed to Chair Casey Anderson, Montgomery County Planning Board, 2425 Reedie Drive, Wheaton, MD 20902; or faxed to (301) 495-1320.

Written comments received after the deadline may not be considered by the Planning Board or be included in the public record unless the Chair leaves the record open.

Ernestine Lenteu President - Treasurer
7209 Flower Avenue Condominium
7209 Flower Avenue Unit 6
Takoma Park, MD 20912

Bill Kules President
B. F. Gilbert Citizens Assn.
7006 Poplar Avenue
Takoma Park, MD 20912

Jamie Glassman Property Manager,
Urbane Results LLC
Braeton Place Condominium Association
2421 Pennsylvania Avenue NW Suite 300
Washington, DC 20009

Rachel Evans Chair
East County Citizens Advisory Board
3300 Briggs Chaney Road
Silver Spring, MD 20904

Mike Cheung President
Eastridge Condominium
8342 Eastridge Avenue
Takoma Park, MD 20912

Daniel Grueso Secretary
Fibonacci Gardens Condominium
708 Kennebec Avenue Apt 2
Takoma Park, MD 20912

William Carroll President
Flower Oak Condominium
8308 Flower Avenue
Takoma Park, MD 20912-6756

Mike Smith President
Friends of Sligo Creek
P.O. Box 11572
Takoma Park, MD 20913

Robert Wiacek President
Hartford-Thayer Condominium Inc
500 Thayer Avenue #503
Silver Spring, MD 20910

Julie Davis Vice President
Kennebec Gardens Condominium
648 Kennebec Avenue
Takoma Park, MD 20912

William Garr Treasurer
7300 Flower Avenue Condominium
7300 Flower Avenue #5
Takoma Park, MD 20912

Kelly Fairweather Agent, Fairweather
Property Mgt
Beverly Condominium
516 Thayer Avenue,
Silver Spring, MD 20910

Kathleen Gurley President
Carolyn Condominium Association
614 Sligo Ave #206
Silver Spring, MD 20910

Dan Reed Chair, Land Use & Zoning
East Silver Spring Citizens Association
8120 Hartford Avenue
Silver Spring, MD 20910

Linda Linson President
Erie Avenue Condominium
719 Erie Avenue Apt 6
Takoma Park, MD 20912

David Potaszniak President
Flint Ledge Estates Community Assn
7 McCormick Court
Rockville, MD 20850

Larry Duff President
Flower Park Condominium Association
7219 Flower Avenue
Takoma Park, MD 20912

Wes Darden Vice President
Friends of Sligo Creek
P.O. Box 11572
Takoma Park, MD 20913

Lacy Alison President
Hilltop Condominium
7736 Maple Avenue Apt 8
Takoma Park, MD 20912

Rosenda McCook Management Agent
Majerle Management
Manor Circle Condominium
1375 Piccard Drive #210
Rockville, MD 20850

Wai Cheung President Treasurer
8109 Garland Avenue Condominiums
8109 Garland Ave
Takoma Park, MD 20901

Melinda Wilkins President
Bonaire Homes Assn.
8100 Bonaire Court, #1
Silver Spring, MD 20910-0041

Icie Goodwin
Concerned Neighbors, Inc.
7481 - 7th St NW
Washington, DC 20012

Tim Haverland President
East Silver Spring Citizens Association
737 Silver Spring Avenue
Silver Spring, MD 20910

Rosenda McCook Agent, Majerle
Management, Inc.
Erie Avenue Condominium
7253 Hanover Parkway, Suite B
Greenbelt, MD 20770

Gatwiri Muthara Treasurer
Flower Oak Condominium
8308 Flower Avenue Apt 104
Takoma Park, MD 20912

Kit Gage Board Member
Friends of Sligo Creek
8007 Park Crest Drive
Silver Spring, MD 20910

Board of Directors
Hartford-Thayer Condo.
500 Thayer Avenue
Silver Spring, MD 20910

Marsha Leboeuf President
Kennebec Gardens Condominium
646 Kennebec Avenue
Takoma Park, MD 20912

Sara Gordon President
Manor Circle Condominium
24 Manor Circle, #105
Takoma Park, MD 20912

Alan Bowser President
Montgomery County Civic Federation

Bailey Condrey President
Montgomery County Civic Federation
10205 Parkwod Driver
Kensington, MD 20895

William Roberts, Esq Chair - Treasurer
Montgomery County Renters Alliance
P.O. Box 7773-7773
Silver Spring , MD 20907

Matthew Losak Director
Montgomery County Renters Alliance Inc.
1001 Spring Street #316
Silver Spring, MD 20910

Edward Amatetti President
Montgomery County Taxpayers League

Eileen McGuckian President
Montgomery Preservation Inc
PO Box 4661
Rockville, MD 20849-4661

Judith Christensen Director
Montgomery Preservation Inc.
6 Walker Avenue
Gaithersburg, MD 20877

Barrie Lee Howard President
New Hampshire Gardens Citizens Assn
7607 Wildwood Drive
Takoma Park, MD 20912

Halle Enyedy Treasurer
New Hampshire Gardens Citizens Assn
7603 Wildwood Drive
Takoma Park, MD 20912

Jim Evans President
North Takoma Citizens Association
703 New York Avenue
Takoma Park, MD 20912

Julius Cinque Chair
Northern Montgomery County Alliance
22300 Slidell Road
Boyd's, MD 20841

Barbara Beccles President
Norwood Hills Homeowners Association
4431 Cannes Lane
Olney, MD 20832-2052

Alan Bowser President
Park Hills Civic Association
409 Deerfield Avenue
Silver Spring, MD 20910

Gardner Cheryl Vice President
Park Hills Civic Association
110 Fleetwood Terrace
Silver Spring, MD 20910-5511

Nina Vucenik Treasurer
Park Hills Civic Association
215 Dale Drive
Silver Spring, MD 20910-5503

Jenee Weeda Contact
Pinecrest Community Association
6413 4th Avenue
Takoma Park, MD 20912

Roger Schlegel Contact
Pinecrest Community Association
6512 Allegheny Avenue
Takoma Park, MD 20912

Andrew Kleine President
Presidents Council of Silver Spring CA
9417 Worth Avenue
Silver Spring, MD 20901

Mike Kraft Chairperson
PROGRESS
120 Dale Drive
Silver Spring, MD 20910

Jeffrey Trunzo President
S. S. Carroll Neighborhood Association
119 Sherman Ave.
Takoma Park, MD 20912

Kay Daniels-Cohen President
S. S. Carroll Neighborhood Association
19 Sherman Avenue
Takoma Park, MD 20912

Matthew Carty President
Sherwood Condominium
116 Lee Avenue Apt 109
Takoma Park, MD 20912

Jennifer Rossmere Treasurer
Sierra Club - Montgomery County Group
P O Box 4024
Rockville, MD 20849

Charles Wolff President
Silver Spring-Takoma Traffic Coalition
635 Bennington Drive
Silver Spring, MD 20910

Jerry McCoy
Silver Spring Historical Society
800 Thayer Avenue
Silver Spring, MD 20910-4504

Abdul Muhammed Contact
Sligo Creek Pky Kennebec Flower
Maplewd
8002 Maple Avenue
Takoma Park, MD 20912

Frank Demarais Contact
Sligo Creek Pky Kennebec Flower
Maplewd
8006 Maple Avenue
Takoma Park, MD 20912

Dave Gross Treasurer
Sligo Park Hills Citizens Association
132 Hilltop Road
Silver Spring, MD 20910

Sorenson Patrick
Sligo Station Condominium
601 Hudson Ave. #207
Takoma Park, MD 20912

Taashi Rowe Primary Contact
Sligo Station Condominium
609 Hudson Avenue #333
Takoma Park, MD 20912

Catherine Tunis President
South of Sligo Citizens Association
907 Larch Avenue
Takoma Park, MD 20912

Jack Carson Treasurer
South of Sligo Citizens Association
700 Auburn Ave
Takoma Park, MD 20912

Juan Luis Torres Vice President
South of Sligo Citizens Association
900 Elm Avenue
Takoma Park, MD 20912

Sandra Filippi Secretary
South of Sligo Citizens Association
501 Belford Place
Takoma Park, MD 20912

Carrie Feldman Member
South Silver Spring Neighborhood Assn

Justin W. Chappell President
South Silver Spring Neighborhood Assn
1220 Blair Mill Road, Unit 12
Silver Spring, MD 20910

Jon Sumida President
Stratton Court Townhouse Association
8148 Hartford Avenue
Silver Spring, MD 20910

Peter Quaranto Board Member
Stratton Court Townhouse Association
8130 Hartford Avenue
Silver Spring, MD 20910

Samuel Stein President
Stratton Court Townhouse Association
8134 Hartford Avenue
Silver Spring, MD 20910

Alexander Freedman Planner
Takoma Park Community Center
7500 Maple Avenue
Takoma Park, MD 20912

Kate Stewart Mayor
Takoma Park Community Center
7500 Maple Avenue
Takoma Park, MD 20912

Rosalind Grigsby Community
Development Coordinator
Takoma Park Community Center
7500 Maple Avenue
Takoma Park, MD 20912

Stephanie Hatcher Member Board of
Directors
Takoma Phoenix Condominium
Association
7611 Maple Ave Apt 806
Takoma Park, MD 20912
Debra McKenzie Treasurer
Tulip Condominium Association
407 Tulip Avenue #202
Takoma Park, MD 20912

Janet De Moor President
Tally-Ho Homeowners Association
12804 Talley Lane
Gaithersburg, MD 20878

Christina Kane President
Thayer Towers Condominium Association
575 Thayer Avenue, #408
Silver Spring, MD 20910