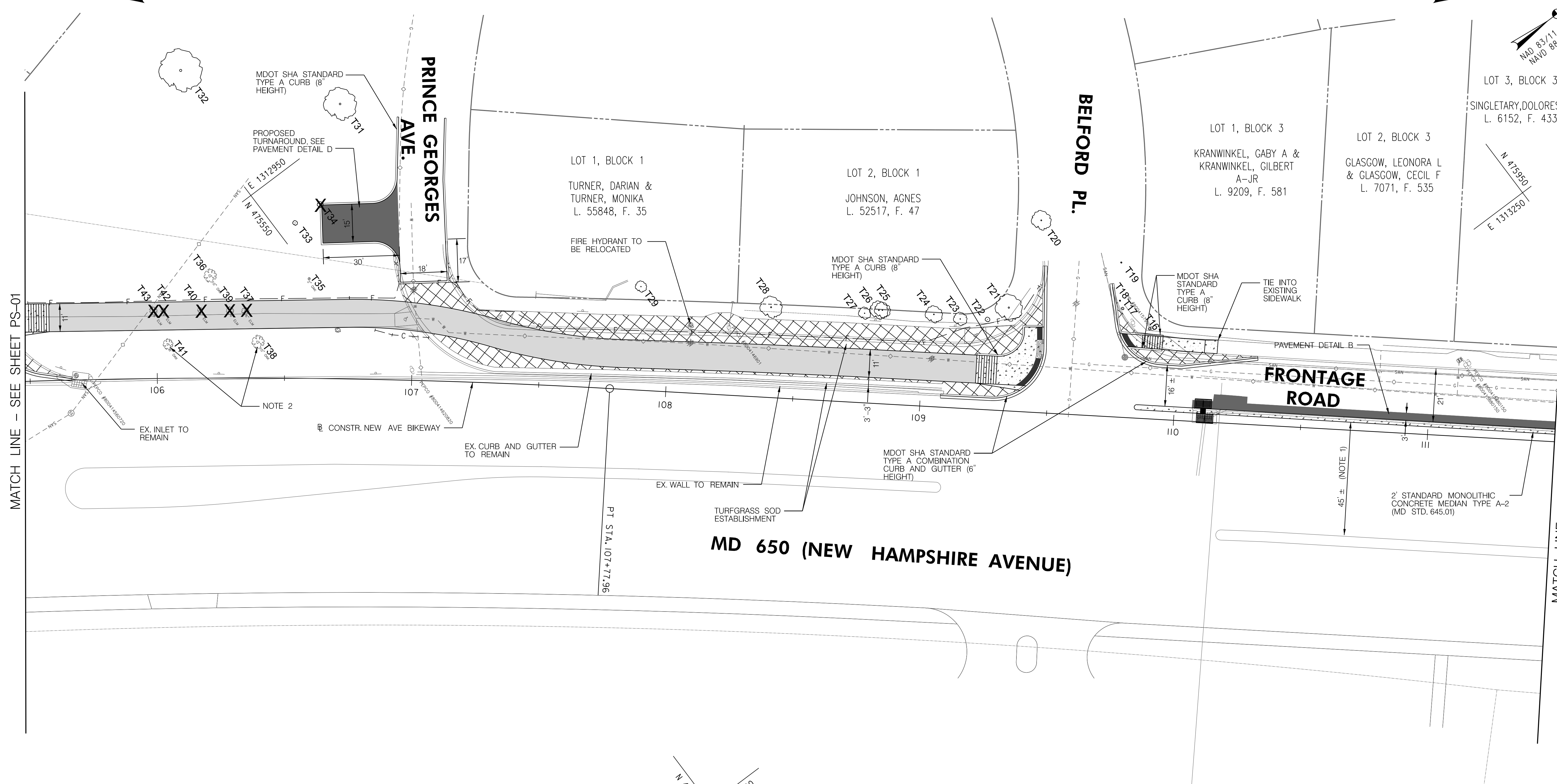
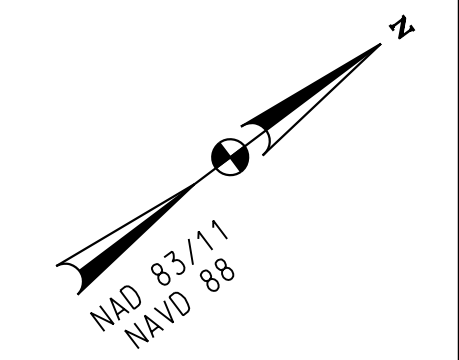


TO US 29

TO MD 193



MATCH LINE - SEE SHEET PS-01

MATCH LINE - SEE SHEET PS-03

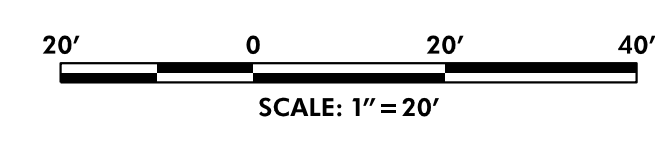
PS-02

RK&K
 P: 410.728.2900 F: 410.728.2834
 700 East Pratt Street, Suite 500 | Baltimore, MD 21202
 Engineers | Construction Managers | Planners | Scientists
 www.rkk.com
 Responsive People | Creative Solutions

LEGEND

	5 INCH CONCRETE SIDEWALK
	CONCRETE DRIVEWAY
	SPECIALTY PAVER - TYPE 2
	ASPHALT SHARED USE PATH
	FULL DEPTH PAVING
	SIDEWALK AND PAVEMENT REMOVAL (PAID FOR AS CLASS 1 EXCAVATION)

- NOTES**
1. A GEOMETRIC SHIFT ALONG MD 650 SOUTHBOUND IS REQUIRED BETWEEN BELFORD PLACE AND AUBURN AVENUE TO ACCOMMODATE THE PROPOSED 5' CONTRA-FLOW BIKE LANE OR 8' SHARED USE PATH.
 2. TREE PRESERVATION MEASURES WILL BE EVALUATED FOR SUBSEQUENT STAGES OF DESIGN.
 3. ALL CONCRETE CURB AND GUTTER WILL BE PAID FOR AS STANDARD TYPE A COMBINATION CURB & GUTTER, ANY HEIGHT OR DEPTH.
 4. ALL CONCRETE CURB WILL BE PAID FOR AS STANDARD TYPE A CURB, ANY HEIGHT OR DEPTH (EXCEPTION BEING TYPE B CURB FOR MD 650 MEDIAN WORK).



CITY OF TAKOMA PARK
 NEW AVE BIKEWAY, SECTION B
 MD 650 (NEW HAMPSHIRE AVENUE)
 POPLAR AVE TO AUBURN AVE

ROADWAY PLAN			
SCALE	1"=20'	DATE	MAY 2021
CONTRACT NO.	T.B.D.	DESIGNED BY	SAB
COUNTY	MONTGOMERY	DRAWN BY	SAB
LOGMILE		CHECKED BY	RJG
F.A.P. NO.	T.B.D.	DRAWING NO.	PS02
SHEET NO.	7 OF 11	2 OF 4	

PLOTTED: 4/14/2021
 FILE: \\ad.rkk.com\fs\Cloud\Projects\2020\20007_NewAveSecB\CADD\Plans\pHD-0002_NewAveBike_B.dgn