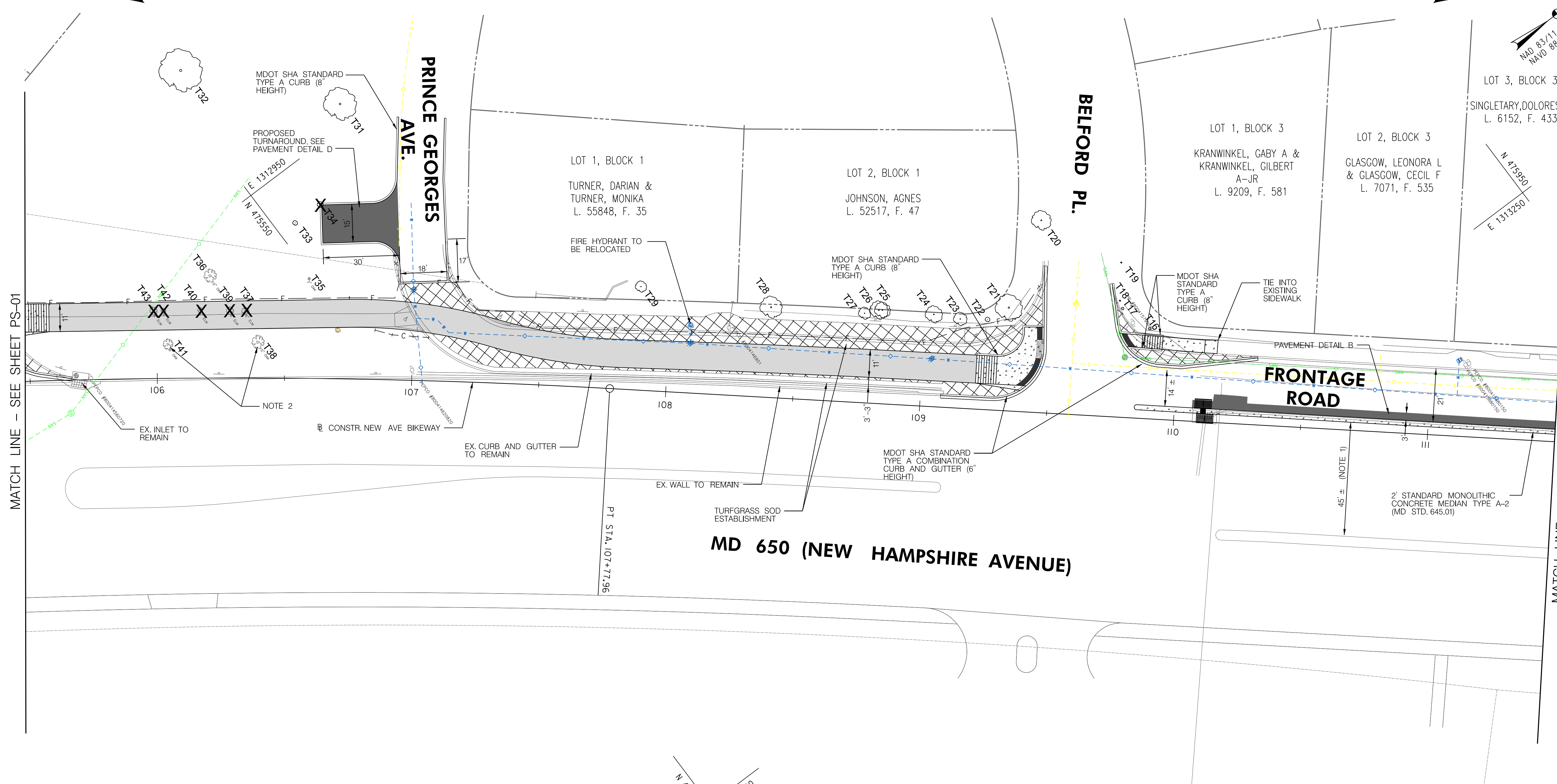
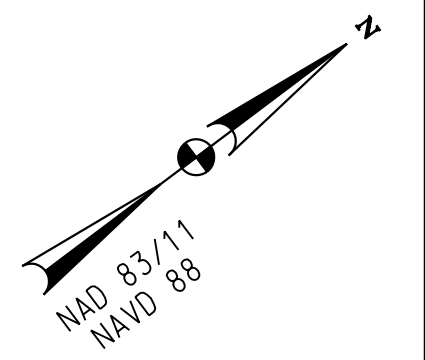


TO US 29

TO MD 193



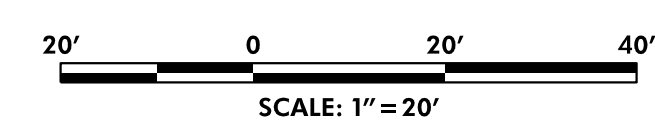
MATCH LINE - SEE SHEET PS-01

MATCH LINE - SEE SHEET PS-03

MD 650 (NEW HAMPSHIRE AVENUE)

NOTES

1. A GEOMETRIC SHIFT ALONG MD 650 SOUTHBOUND IS REQUIRED BETWEEN BELFORD PLACE AND AUBURN AVENUE TO ACCOMMODATE THE PROPOSED 5' CONTRA-FLOW BIKE LANE OR 8' SHARED USE PATH.
2. TREE PRESERVATION MEASURES WILL BE EVALUATED FOR SUBSEQUENT STAGES OF DESIGN.
3. ALL CONCRETE CURB AND GUTTER WILL BE PAID FOR AS STANDARD TYPE A COMBINATION CURB & GUTTER, ANY HEIGHT OR DEPTH.
4. ALL CONCRETE CURB WILL BE PAID FOR AS STANDARD TYPE A CURB, ANY HEIGHT OR DEPTH (EXCEPTION BEING TYPE B CURB FOR MD 650 MEDIAN WORK).



LEGEND	
	5 INCH CONCRETE SIDEWALK
	CONCRETE DRIVEWAY
	SPECIALTY PAVER - TYPE 2
	ASPHALT SHARED USE PATH
	FULL DEPTH PAVING
	SIDEWALK AND PAVEMENT REMOVAL (PAID FOR AS CLASS 1 EXCAVATION)

RK&K
 P: 410.728.2900 F: 410.728.2834
 700 East Pratt Street, Suite 500 | Baltimore, MD 21202
 Engineers | Construction Managers | Planners | Scientists
 www.rkk.com
 Responsive People | Creative Solutions

CITY OF TAKOMA PARK
 NEW AVE BIKEWAY, SECTION B
 MD 650 (NEW HAMPSHIRE AVENUE)
 POPLAR AVE TO AUBURN AVE

ROADWAY PLAN			
SCALE	1"=20'	DATE	CONTRACT NO. T.B.D.
DESIGNED BY	SAB	COUNTY	MONTGOMERY
DRAWN BY	SAB	LOGMILE	
CHECKED BY	RJG		
F.A.P. NO.	T.B.D.		
DRAWING NO.	PS02	2 OF 4	SHEET NO. 7 OF 11

PLOTTED: 4/14/2021
 FILE: \\ad.rkk.com\fs\Cloud\Projects\2020\20007_NewAveSecB\CADD\Plans\Utility Color Plans for MR\PHD-0002_NewAveBike_B-utility-color.dgn