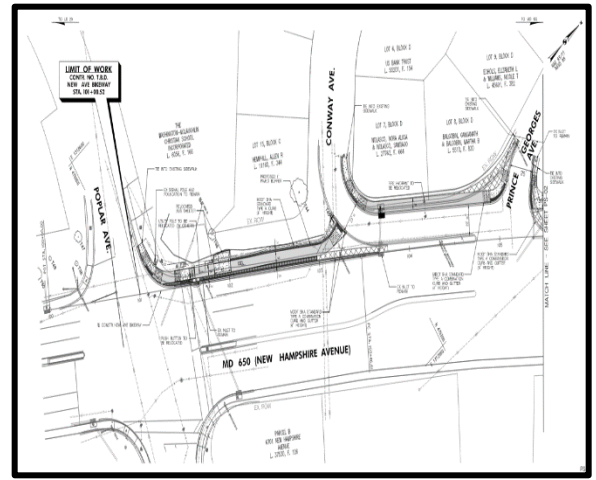


PLANNING BOARD HEARING

On **October 28, 2021**, the Montgomery County Planning Board will conduct a virtual public hearing at 2425 Reedie Drive, Wheaton, Maryland on the following development plan:

Name of Plan: New Avenue Bikeway, Section B MD 650
Mandatory Referral Number: MR2021024
Master Plan: Takoma Park Master Plan (2001)
Proposed Use: Construction of bikeway improvements along the west side of New Hampshire Avenue between Polar Avenue and Auburn Avenue.



To review a written report by planners regarding the Mandatory Referral application, check the approximate hearing time, or to sign up to testify, go to our website at montgomeryplanningboard.org/agendas/. You may also sign up to testify by calling 301.495.4605. The public can still participate in the Planning Board hearing online at www.montgomeryplanningboard.org while our building is closed, and our daily work operations are still in effect.

For more information or to comment on the development plans, please contact Stephen Aldrich, the Mandatory referral reviewer, via email at Stephen.Aldrich@montgomeryplanning.org, or by phone at 301.495.4528.

Thank you for your interest in Montgomery County's future development.

The Maryland-National Capital Park and Planning Commission encourages the participation of individuals with disabilities in its programs and facilities. For support in using facilities, staff support or adaptive equipment, contact the Planning Department ADA Coordinator. Provide requests one week in advance of event: Christine.McGrew@montgomeryplanning.org | (301) 495-1324 | 301-495-1331 (TTY) | 7-1-1 or 800-552-7724 (MD Relay)

Montgomery County Planning Department
M-NCPPC
2425 Reedie Drive
Wheaton, MD 20902

Montgomery County Planning Board HEARING NOTICE

**New Avenue Bikeway, Section B MD 650
OCTOBER 28, 2021**

(view additional information on the back of this card)

Written comments should include the agenda item and must be received by 12 noon on Wednesday morning before a scheduled Thursday hearing. They may be emailed to Montgomery County Planning Board Chair Casey Anderson at mcp-chair@mncppc-mc.org; mailed to Chair Casey Anderson, Montgomery County Planning Board, 2425 Reedie Drive, Wheaton, MD 20902; or faxed to (301) 495-1320.

Written comments received after the deadline may not be considered by the Planning Board or be included in the public record unless the Chair leaves the record open.

Ernestine Lenteu
7209 Flower Avenue Condominium
6109 Poindexter Lane
Rockville, MD 20852

Jessica Cohen
7209 Flower Avenue Condominium
7209 Flower Avenue
Takoma Park, MD 20912

William Garr
7300 Flower Avenue Condominium
7300 Flower Avenue #5
Takoma Park, MD 20912

Jamie Glassman
Braeton Place Condominium Association
2421 Pennsylvania Avenue NW Suite 300
Washington, DC 20009

Icie Goodwin
Concerned Neighbors, Inc.
7481 - 7th St NW
Washington, DC 20012

Rachel Evans
East County Citizens Advisory Board
3300 Briggs Chaney Road
Silver Spring, MD 20904

Linda Linson
Erie Avenue Condominium
719 Erie Avenue Apt 6
Takoma Park, MD 20912

Rosenda McCook
Erie Avenue Condominium
1375 Piccard Drive, Suite 210
Rockville, MD 20850

Sara Pray
Erie Avenue Condominium
721 Erie Avenue, #3
Takoma Park, MD 20912

Flower Park Condominium
Flower Park Condominium Association
7219 Flower Ave
Takoma Park, MD 20912

William Echols
Flower Park Condominium Association
7219 Flower Avenue
Takoma Park, MD 20912

Kit Gage
Friends of Sligo Creek
8007 Park Crest Drive
Silver Spring, MD 20910

Mike Smith
Friends of Sligo Creek
P.O. Box 11572
Takoma Park, MD 20913

Wes Darden
Friends of Sligo Creek
P.O. Box 11572
Takoma Park, MD 20913

Lacy Alison
Hilltop Condominium
7736 Maple Avenue APT 8
Takoma Park, MD 20912

Gil Winters
Hillwood Manor Community Association
7101 13th Avenue
Takoma Park, MD 20912

Josh Goldberg
Hillwood Manor Community Association
7105 13th Avenue
Takoma Park, MD 20912

Rosenda McCook
Manor Circle Condominium
1375 Piccard Drive #210
Rockville, MD 20850

Sara Gordon
Manor Circle Condominium
24 Manor Circle #105
Takoma Park, MD 20912

Alan Bowser
Montgomery County Civic Federation

Bailey Condrey
Montgomery County Civic Federation
10205 Parkwod Driver
Kensington, MD 20895

William Roberts, Esq
Montgomery County Renters Alliance
P.O. Box 7773-7773
Silver Spring, MD 20907

Matthew Losak
Montgomery County Renters Alliance Inc.
1001 Spring Street #316
Silver Spring, MD 20910

Edward Amatetti
Montgomery County Taxpayers League

Eileen McGuckian
Montgomery Preservation Inc
PO Box 4661
Rockville, MD 0

Judith Christensen
Montgomery Preservation Inc.
6 Walker Avenue
Gaithersburg, MD 20877

Barrie Lee Howard
New Hampshire Gardens Citizens Assn
7607 Wildwood Drive
Takoma Park, MD 20912

Halle Enyedy
New Hampshire Gardens Citizens Assn
7603 Wildwood Drive
Takoma Park, MD 20912

Julius Cinque
Northern Montgomery County Alliance
22300 Slidell Road
Boyd's, MD 20841

Jenee Weeda
Pinecrest Community Association
6413 4th Avenue
Takoma Park, MD 20912

Roger Schlegel
Pinecrest Community Association
6512 Allegheny Avenue
Takoma Park, MD 20912

Jeffrey Trunzo
S. S. Carroll Neighborhood Association
119 Sherman Ave.
Takoma Park, MD 20912

Kay Daniels-Cohen
S. S. Carroll Neighborhood Association
19 Sherman Avenue
Takoma Park, MD 20912

Evelyn Diaz
Sherwood Condominium
3833 Farragut Avenue
Kensington, MD 20895

Farida Umatan
Sherwood Condominium
3383 Farragut Avenue
Kensington, MD 20895

Matthew Carty
Sherwood Condominium
116 Lee Avenue Apartment #109
Takoma Park, MD 20912

Jennifer Rossmere
Sierra Club - Montgomery County Group
P O Box 4024
Rockville, MD 20849

Abdul Muhammed
Sligo Creek Pky Kennebec Flower
Maplewd
8002 Maple Avenue
Takoma Park, MD 20912

Frank Demarais
Sligo Creek Pky Kennebec Flower
Maplewd
8006 Maple Avenue
Takoma Park, MD 20912

Dave Gross
Sligo Park Hills Citizens Association
132 Hilltop Road
Silver Spring, MD 20910

Catherine Tunis
South of Sligo Citizens Association
907 Larch Avenue
Takoma Park, MD 20912

Jack Carson
South of Sligo Citizens Association
700 Auburn Ave
Takoma Park, MD 20912

Juan Luis Torres
South of Sligo Citizens Association
900 Elm Avenue
Takoma Park, MD 20912

Sandra Filippi
South of Sligo Citizens Association
501 Belford Place
Takoma Park, MD 20912

Lawan Trent
Takoma Condominiums [Lee Street]
7811 Montrose Road
Rockville, MD 20852

Matthew Martin
Takoma Condominiums [Lee Street]
111 Lee Street
Takoma Park, MD 20912

Rahul Risal
Takoma Condominiums [Lee Street]
7811 Montrose Road
Potomac, MD 20854

Kwame Yiadom
Takoma Overlook Condominium
Association
7811 Montrose Road
Potomac, MD 20854

Kevin Miller
Takoma Overlook Condominiums
7333 New Hampshire Avenue, Unit 1104
Takoma Park, MD 20912

Alexander Freedman
Takoma Park Community Center
7500 Maple Avenue
Takoma Park, MD 20912

Kate Stewart
Takoma Park Community Center
7500 Maple Avenue
Takoma Park, MD 20912

Rosalind Grigsby
Takoma Park Community Center
7500 Maple Avenue
Takoma Park, MD 20912

Kevin Gannon
Takoma Phoenix Condominium
Association
1131 University Boulevard #101
Silver Spring, MD 20902, MD 20902

Kyle Walker
Takoma Phoenix Condominium
Association
7611 Maple Avenue
Takoma Park, MD 20912

Terry Anderson
Takoma Phoenix Condominium
Association
8920 Stephens Road
Laurel, MD 20723

Anthony Adams
Tulip Condominium Association
14440 Cherry Lane Court
Laurel, MD 20707

Eric Kirtland Olson
Tulip Condominium Association
407 Tulip Avenue #103
Takoma Park, MD 20912