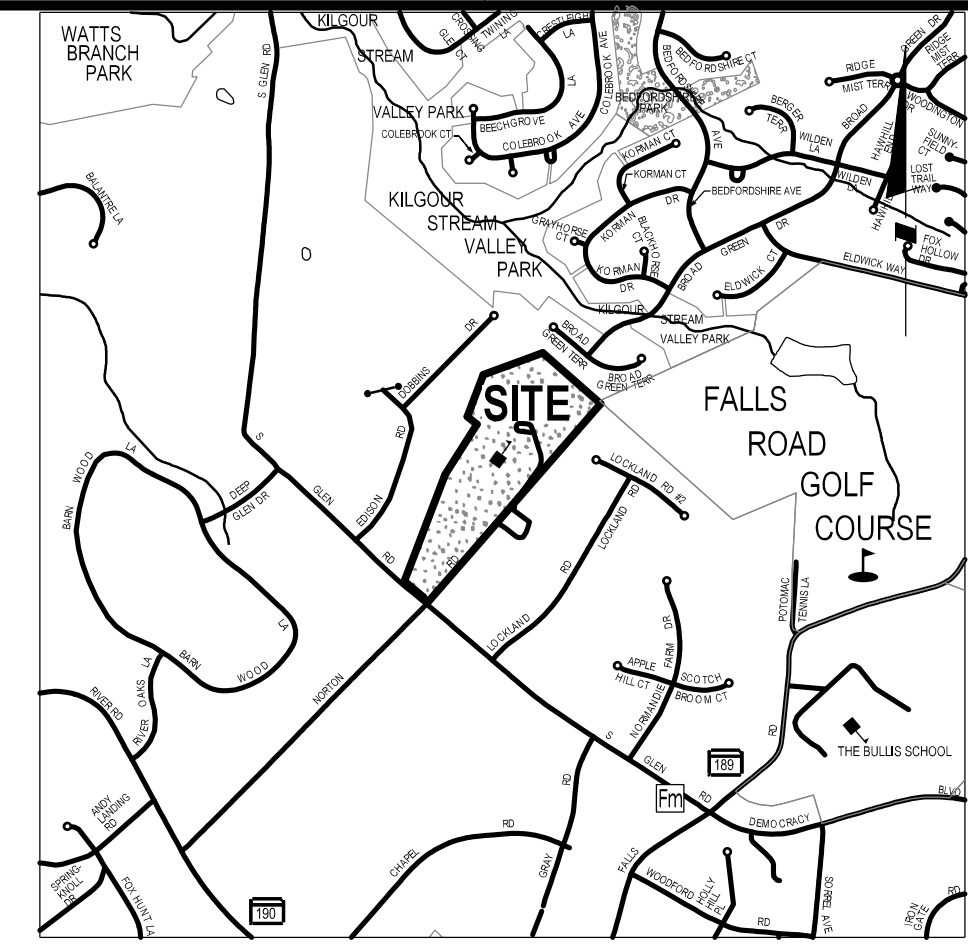
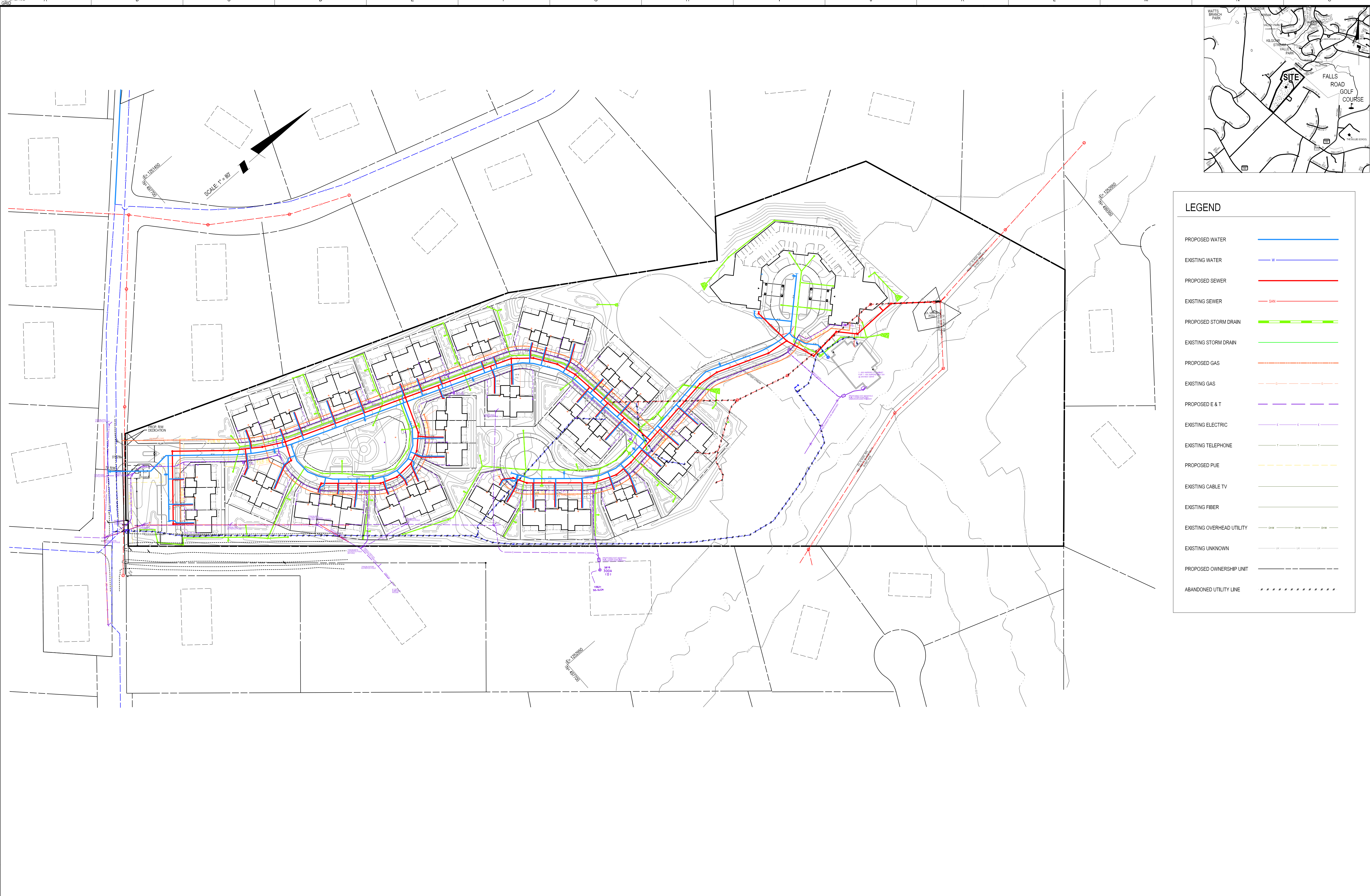
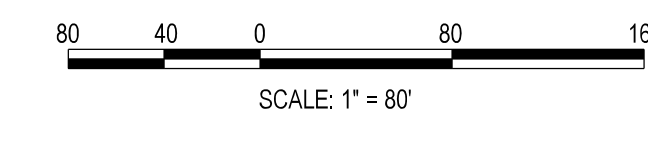


The original of this drawing document was prepared by Soltesz, Inc. (SOLTESZ). This document was not obtained directly from SOLTESZ and/or it was transmitted electronically. SOLTESZ cannot guarantee that unauthorized changes and/or alterations were not made by others. If verification of the information contained herein is needed, contact should be made directly with SOLTESZ. SOLTESZ makes no warranties, express or implied, concerning the accuracy of any information that has been transmitted by electronic means.



LEGEND	
PROPOSED WATER	
EXISTING WATER	
PROPOSED SEWER	
EXISTING SEWER	
PROPOSED STORM DRAIN	
EXISTING STORM DRAIN	
PROPOSED GAS	
EXISTING GAS	
PROPOSED E & T	
EXISTING ELECTRIC	
EXISTING TELEPHONE	
PROPOSED PUE	
EXISTING CABLE TV	
EXISTING FIBER	
EXISTING OVERHEAD UTILITY	
EXISTING UNKNOWN	
PROPOSED OWNERSHIP UNIT	
ABANDONED UTILITY LINE	



**PROFESSIONAL CERTIFICATION**  
 I HEREBY CERTIFY THAT THESE DOCUMENTS WERE PREPARED OR APPROVED BY ME, AND THAT I AM A DULY LICENSED PROFESSIONAL ENGINEER UNDER THE LAWS OF THE STATE OF MARYLAND.  
 LICENSE NO. 30287      EXPIRATION DATE: 05/15/2022



**COLOR-CODED UTILITY EXHIBIT**

**CONDITIONAL USE PLAN  
 HERITAGE GARDENS  
 PARCELS P950, P896 OF OUT CLAGGETT FOLLY & PARCEL B GLEN VISTA**

6TH ELECTION DISTRICT, MONTGOMERY COUNTY, MARYLAND

**SOLTESZ, INC.**  
 Engineering  
 Surveying  
 Planning  
 Environmental Sciences

Rockville Office  
 2 Research Place, Suite 100  
 Rockville, MD 20850  
 P. 301.948.2750 F. 301.948.9067  
 www.solteszco.com

NO.	DATE	DESIGNED	TECHNICIAN	REVISIONS	BY	DATE

NO. APRIL 2019  
 DESIGNED: ECO  
 CAD STANDARDS VERSION: V8 - RCS  
 TECHNICIAN: ECO  
 CHECKED: DP

**MISS UTILITY NOTE**  
 INFORMATION CONCERNING EXISTING UNDERGROUND UTILITIES WAS OBTAINED FROM AVAILABLE RECORDS. THE CONTRACTOR MUST DETERMINE THE EXACT LOCATION AND ELEVATION OF ALL EXISTING UTILITIES AND UTILITIES CROSSINGS BY DIGGING TEST PITS BY HAND, WELL IN ADVANCE OF THE START OF EXCAVATION. CONTACT MISS UTILITY AT 1-800-277-7777 48 HOURS PRIOR TO THE START OF EXCAVATION. IF CLEARANCES ARE LESS THAN SHOWN ON THIS PLAN OR TWELVE (12) INCHES, WHICHEVER IS LESS, CONTACT THE ENGINEER AND THE UTILITY COMPANY BEFORE PROCEEDING WITH CONSTRUCTION. CLEARANCES LESS THAN NOTED MAY REQUIRE REVISIONS TO THIS PLAN.

**DEVELOPER / APPLICANT:**  
 HERITAGE GARDENS LAND, LLC  
 5283 Corporate Drive  
 Suite 300  
 Frederick, MD 21703  
 Phone: (301)-895-6614 x104

MAP: 5283	GRID: FS,GS
TAX MAP: FQ31	ZONING CATEGORY: RE-2
WBSG 200 SHEET: 213NW10 214NW10	MASTERPLAN: POTOMAC SUBREGION 2002
SITE DATUM: HORIZONTAL: NAD 83/91 VERTICAL: NGVD 29	WATERSHED: WATTS BRANCH WATERSHED

SHEET 1 OF 1  
 PROJECT NO. 2198-02-00