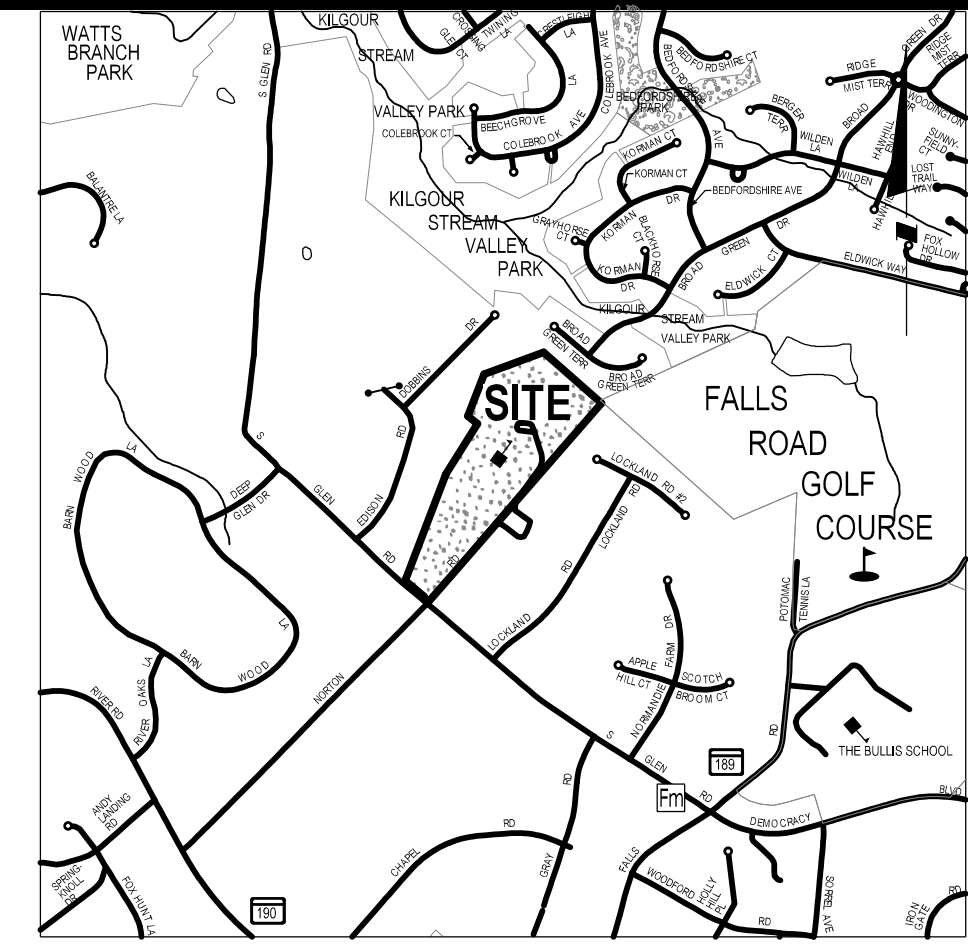
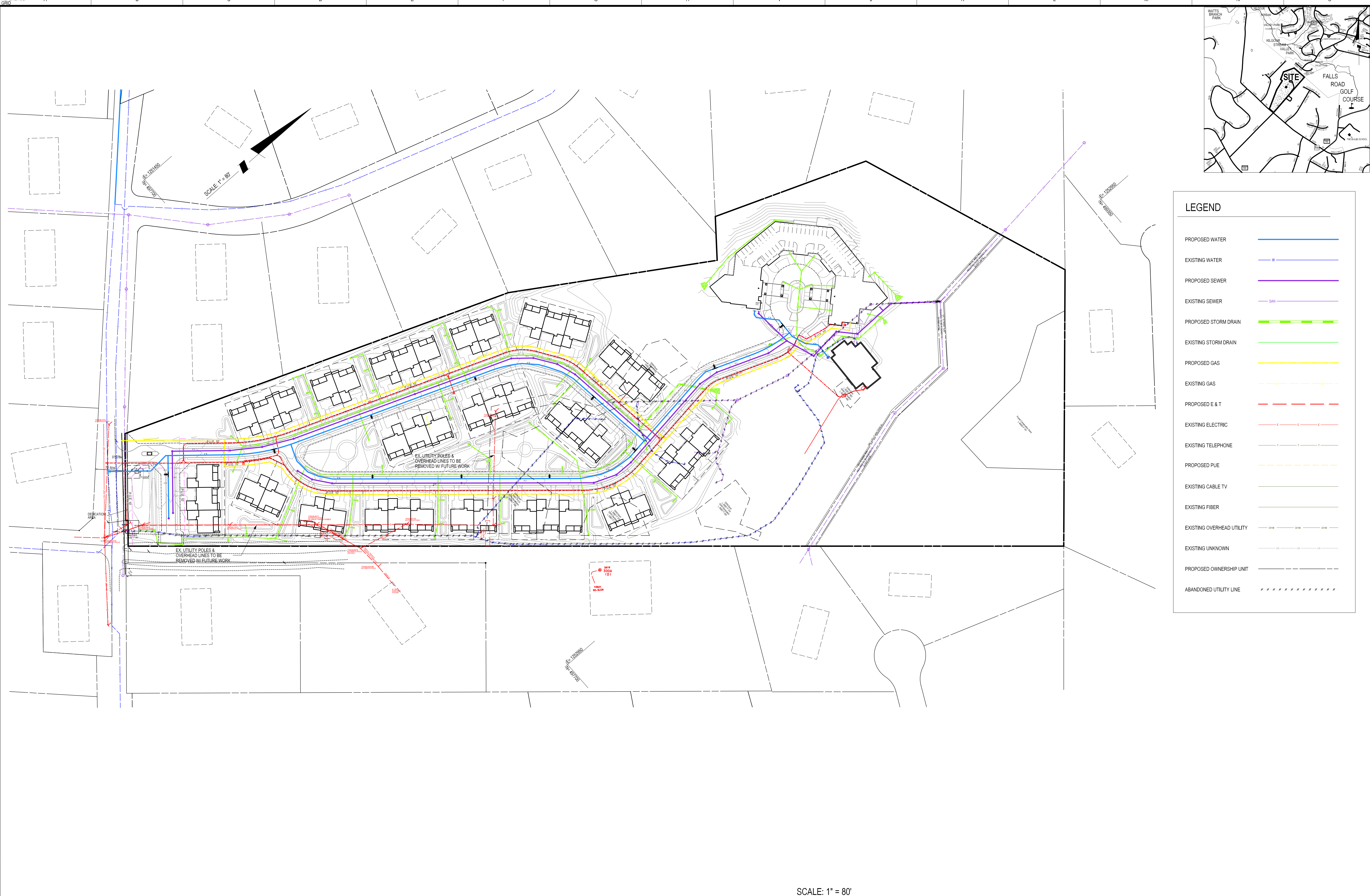


The original of this drawing document was prepared by Soltesz, Inc. (SOLTESZ). This document was not obtained directly from SOLTESZ, Inc. SOLTESZ, Inc. cannot guarantee that unauthorized changes and/or alterations were not made by others. If verification of the information contained herein is needed, contact should be made directly with SOLTESZ. SOLTESZ makes no warranties, express or implied, concerning the accuracy of any information that has been transmitted by electronic means.



LEGEND	
PROPOSED WATER	
EXISTING WATER	
PROPOSED SEWER	
EXISTING SEWER	
PROPOSED STORM DRAIN	
EXISTING STORM DRAIN	
PROPOSED GAS	
EXISTING GAS	
PROPOSED E & T	
EXISTING ELECTRIC	
EXISTING TELEPHONE	
PROPOSED PUE	
EXISTING CABLE TV	
EXISTING FIBER	
EXISTING OVERHEAD UTILITY	
EXISTING UNKNOWN	
PROPOSED OWNERSHIP UNIT	
ABANDONED UTILITY LINE	

SCALE: 1" = 80'

**SOLTESZ, INC.**  
 Engineering  
 Surveying  
 Planning  
 Environmental Sciences

Rockville Office  
 2 Research Place, Suite 100  
 Rockville, MD 20850  
 P. 301.948.2750 F. 301.948.9067  
 www.soltesz.com

NO.	DATE	DESIGNED	TECHNICIAN	REVISIONS	BY	DATE
1	APRIL 2019	ECO	ECO	18 - RCS		

**MISS UTILITY NOTE**  
 INFORMATION CONCERNING EXISTING UNDERGROUND UTILITIES WAS OBTAINED FROM AVAILABLE RECORDS. THE CONTRACTOR MUST DETERMINE THE EXACT LOCATION AND ELEVATION OF ALL EXISTING UTILITIES AND UTILITY ORIGINATOR'S ENGINEERING TEST FITS BY HAND, WELL IN ADVANCE OF THE START OF EXCAVATION. CONTACT "MISS UTILITY" AT 1-800-261-7777, 48 HOURS PRIOR TO THE START OF EXCAVATION. IF CLEARANCES ARE LESS THAN SHOWN ON THIS PLAN OR TWELVE (12) INCHES, WHICHEVER IS LESS, CONTACT THE ENGINEER AND THE UTILITY COMPANY BEFORE PROCEEDING WITH CONSTRUCTION. CLEARANCES LESS THAN NOTED MAY REQUIRE REVISIONS TO THIS PLAN.

**DEVELOPER / APPLICANT:**  
 HERITAGE GARDENS LAND, LLC  
 5283 Corporate Drive  
 Suite 300  
 Frederick, MD 21703  
 Phone: (301)-895-6614 x104

MAP NO. 5283	GRID	FS-GS
TAX MAP FZ31	ZONING CATEGORY: RE-2	
WBSG 200 SHEET 213N/W10	MASTERPLAN: POTOMAC	
	SUBREGION 2002	
SITE DATUM: HORIZONTAL: NAD 83/99	WATERSHED: WATTS BRANCH	
VERTICAL: NGVD 29		

**PROFESSIONAL CERTIFICATION**  
 I HEREBY CERTIFY THAT THESE DOCUMENTS WERE PREPARED OR APPROVED BY ME, AND THAT I AM A DULY LICENSED PROFESSIONAL ENGINEER UNDER THE LAWS OF THE STATE OF MARYLAND.  
 LICENSE NO. 30287 EXPIRATION DATE: 03/15/2022

**COLOR-CODED UTILITY EXHIBIT**

**CONDITIONAL USE PLAN**  
**HERITAGE GARDENS**  
**PARCELS P950, P896 OF OUT CLAGGETT FOLLY & PARCEL B GLEN VISTA**

6TH ELECTION DISTRICT, MONTGOMERY COUNTY, MARYLAND

PROJECT NO. 2198-02-00

SHEET 1 OF 1