

CENTURY
 Site Plan Amendment F
 #82003007F
 Cloverleaf Center, Parcels Z & AA
 Montgomery County, Maryland, Clarksburg Election District 2

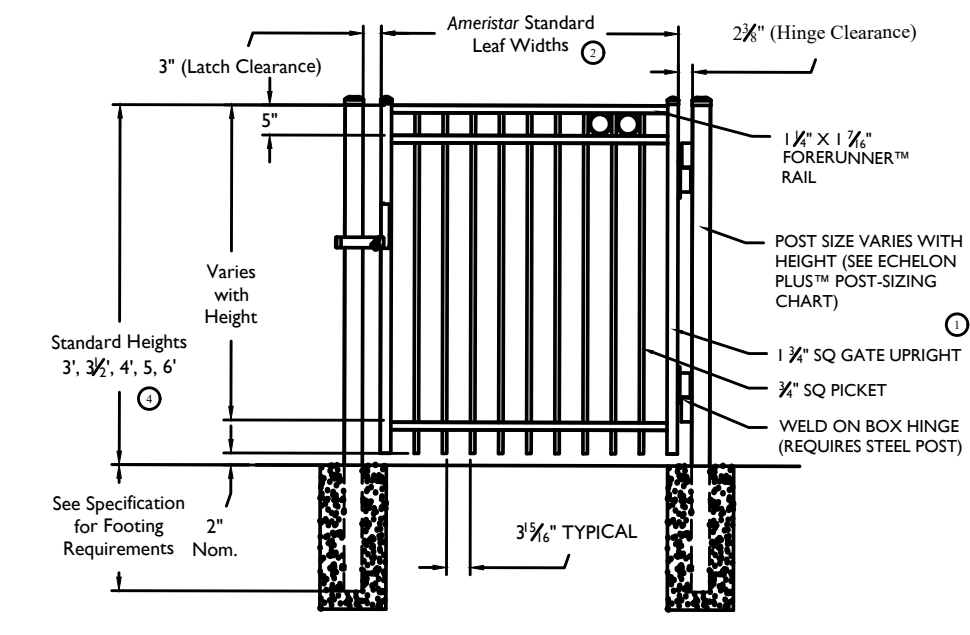
KEY PLAN

ISSUE DATE	DESCRIPTION
2021.10.29	M-NCPPC - Initial Submission
2021.11.30	M-NCPPC - In-Take Submission
2022.04.14	M-NCPPC - Post DRC Submission
2023.05.31	M-NCPPC - 2nd Post DRC Submission

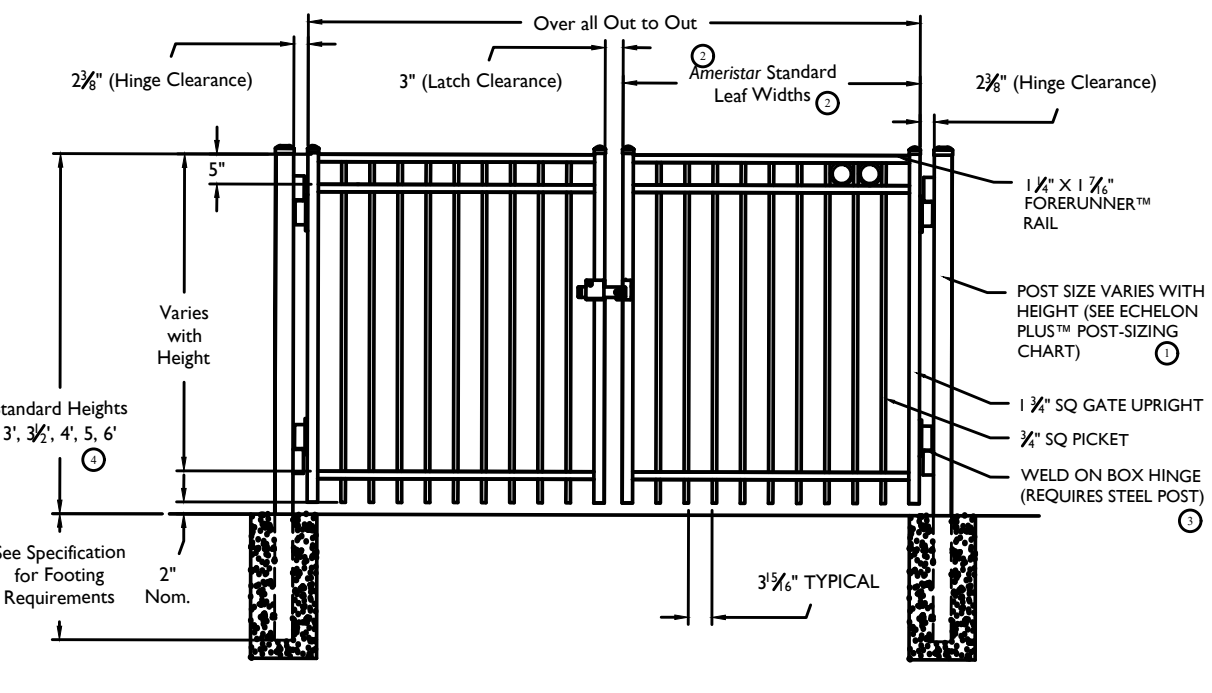
REVISIONS NO.	DATE	DESCRIPTION
2		

PROJECT NUMBER: 1252A1
 DATE: 2023.05.17
 SCALE: AS SHOWN
 DRAWING TITLE: Landscape Details

- NOTES:
- Post size depends on fence height, weight, and wind loads. See Echelon Plus™ post sizing chart.
 - See Ameristar Gate Table for standard out to outs. Custom gate openings available for special out to out/leaf widths.
 - Additional styles of gate hardware are available on request. This could change the Latch & Hinge Clearance.
 - Fourth rail required for some heights.

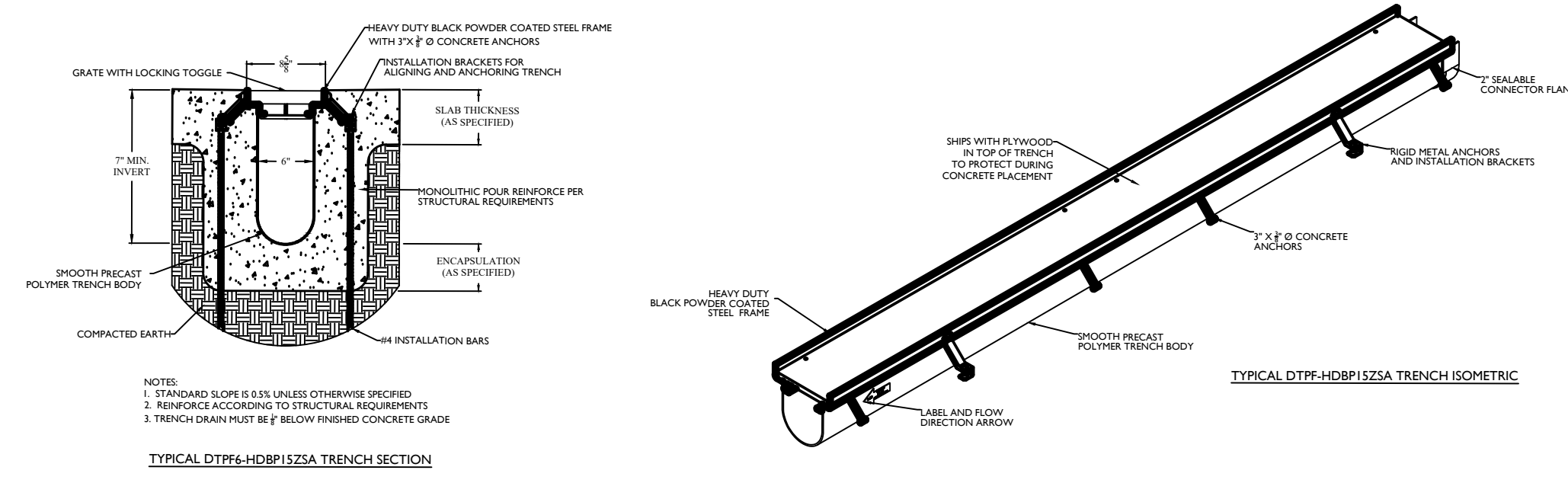


ECHELON PLUS™
Single Gate Arrangement



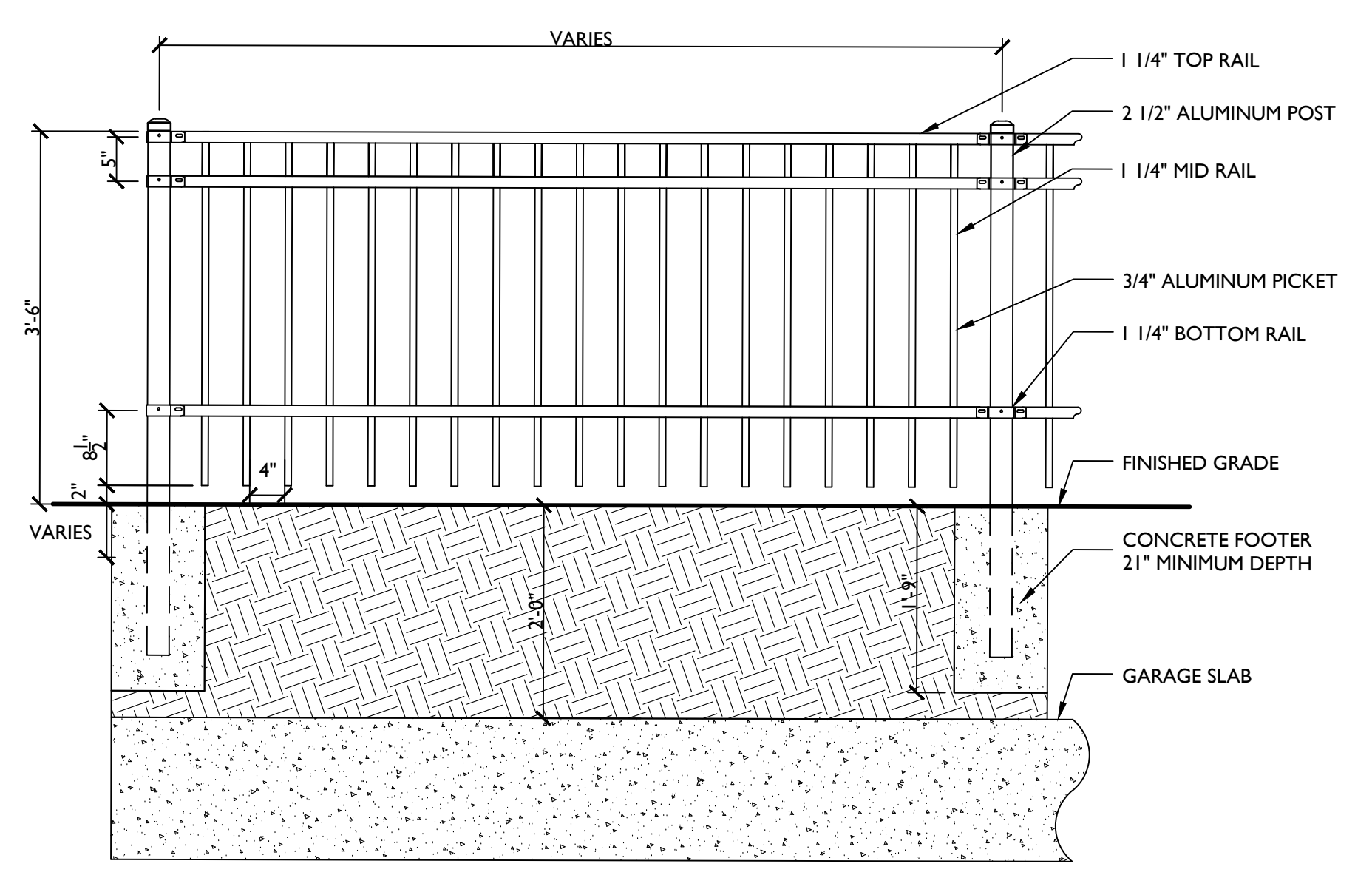
ECHELON PLUS™
Double Gate Arrangement

Values shown are nominal and not to be used for insulation purposes. See product specification for insulation requirements.

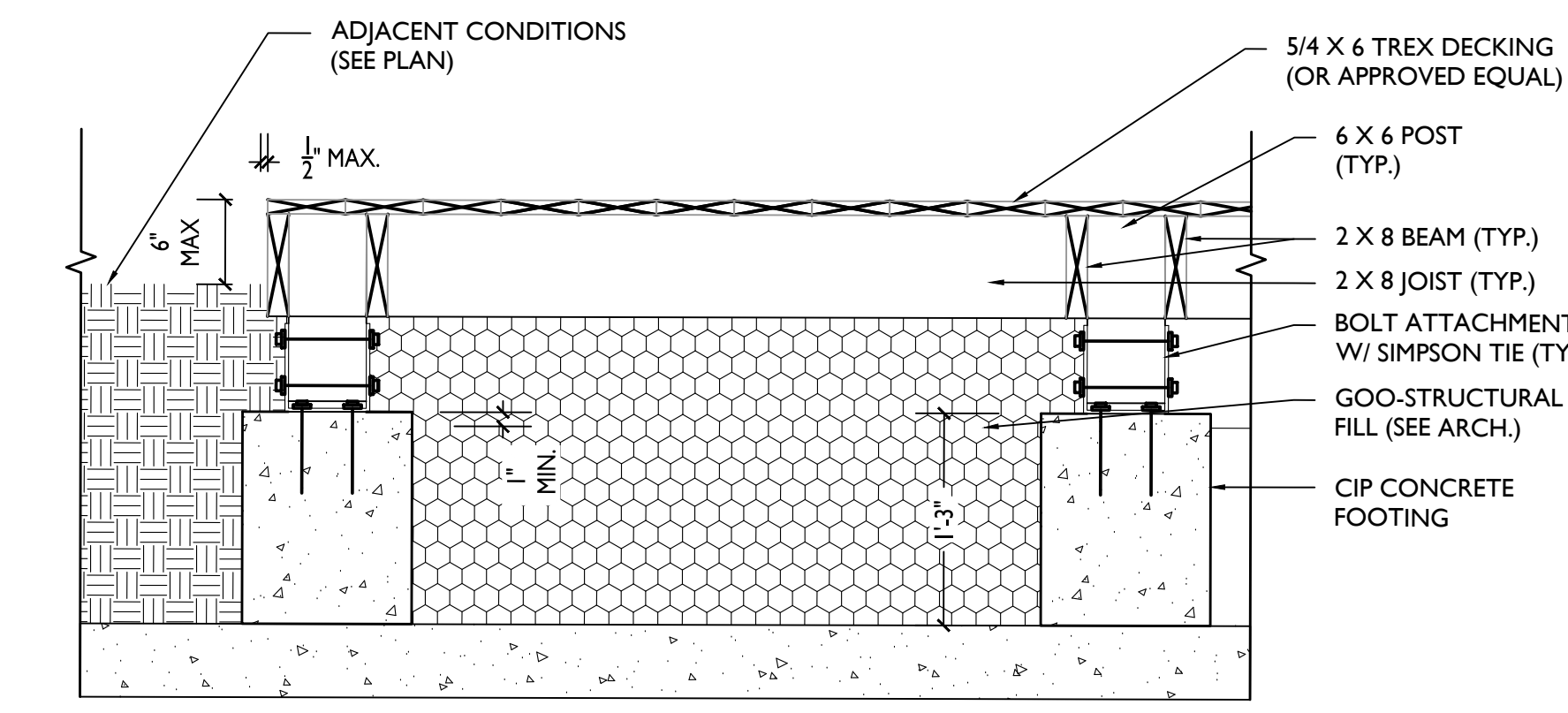


4 TRENCH DRAIN

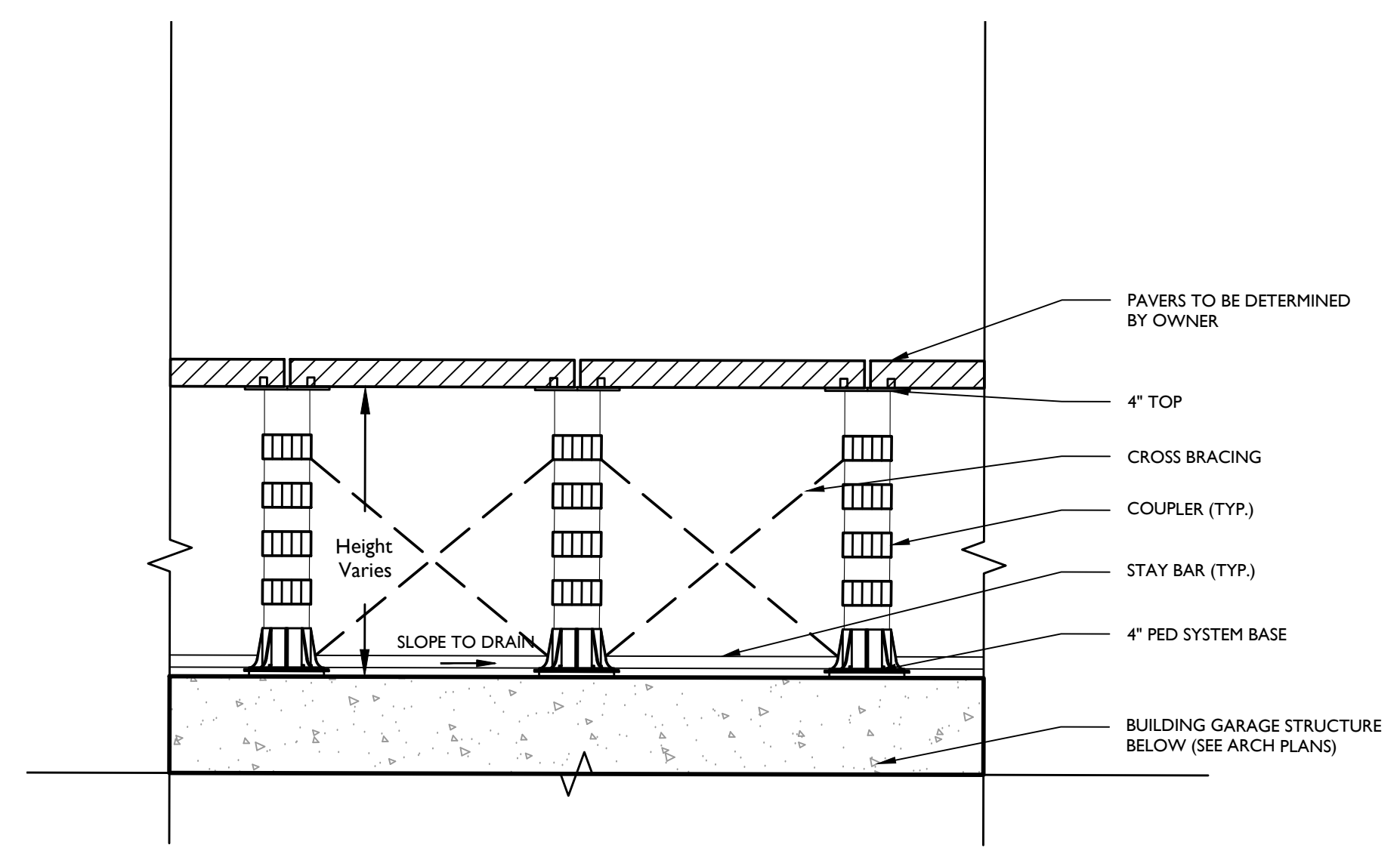
1 FENCE TYPE I GATE



2 4' FENCE OVER GARAGE SLAB WITH FOOTERS



5 DECK ON STRUCTURE



3 PAVER ON PEDESTAL

LIST OF AMENDMENT ITEMS:

- RE-DESIGNED AREA 1C, LOCATED AT CLOVERLEAF CENTER SUBDIVISION LOTS 2,3, & 4, BLOCK A - FOR NEWLY PROPOSED BUILDINGS D, E, G, & H AND FUTURE C1/C2 PAD SITE.
- ADDED NEW SHEET PER AMENDMENT
- NO SHEET CHANGES.
- REVISED DEVELOPMENT PROGRAM AND BUILDING USES.
- REVISED DEVELOPMENT DATATABLES AND/OR NOTES.
- REVISED SUBDIVISION OF LOTS.
- REVISED ARCHITECTURE ELEVATION AND BUILDING LAYOUTS ON LOTS 2, 3, & 4.
- REVISED LANDSCAPE & LIGHTING LAYOUTS ON LOTS 2, 3, & 4.
- REVISED STREET TREE AND CANOPY COVERAGE ON LOTS 2, 3, & 4.
- REVISED UTILITY LAYOUT / CONNECTION FOR EACH PROPOSED BUILDING.
- REVISED WATER & SEWER LAYOUT / CONNECTIONS WITHIN LOTS 2, 3, & 4.
- REVISED SITE PLAN SHEET NUMBERS TO ACCOUNT FOR NEW SHEETS ADDED PER SITE PLAN AMENDMENT.
- REVISED SHEET MATCH LINES AND/OR ENLARGEMENT VIEWS PER REVISED LAYOUT.
- REVISED PROPOSED CONTOURS PER REVISED LAYOUT ON LOTS 2, 3, & 4.
- REVISED AMENITY AND PROGRAMMED SPACES AROUND NEW PROPOSED BUILDINGS.

Developer's Certificate
 The Undersigned agrees to execute all the features of the Site Plan Approval No. 82003007F including Approval Conditions, Development Program, and Certified Site Plan.

Developer: Shamit Development Company
 Pradip Ghosh
 Contact Person

Address: 4495 Montgomery Road, Ellicott City, MD 21043
 Phone: (443) 802-9077

Signature: Pradip Ghosh

Preliminary Not For Construction

FOR LOCATION OF UTILITIES CALL "MISS UTILITY" AT 1-800-257-7777 OR LOG ON TO <http://www.missutility.net/itics/> 48 Hours in Advance of Any Work in This Vicinity

NOTE: The Planimetric information shown on this plan is based in part on copyrighted GIS Data from M-NCPPC, and may not be copied or reproduced without express written permission from M-NCPPC.