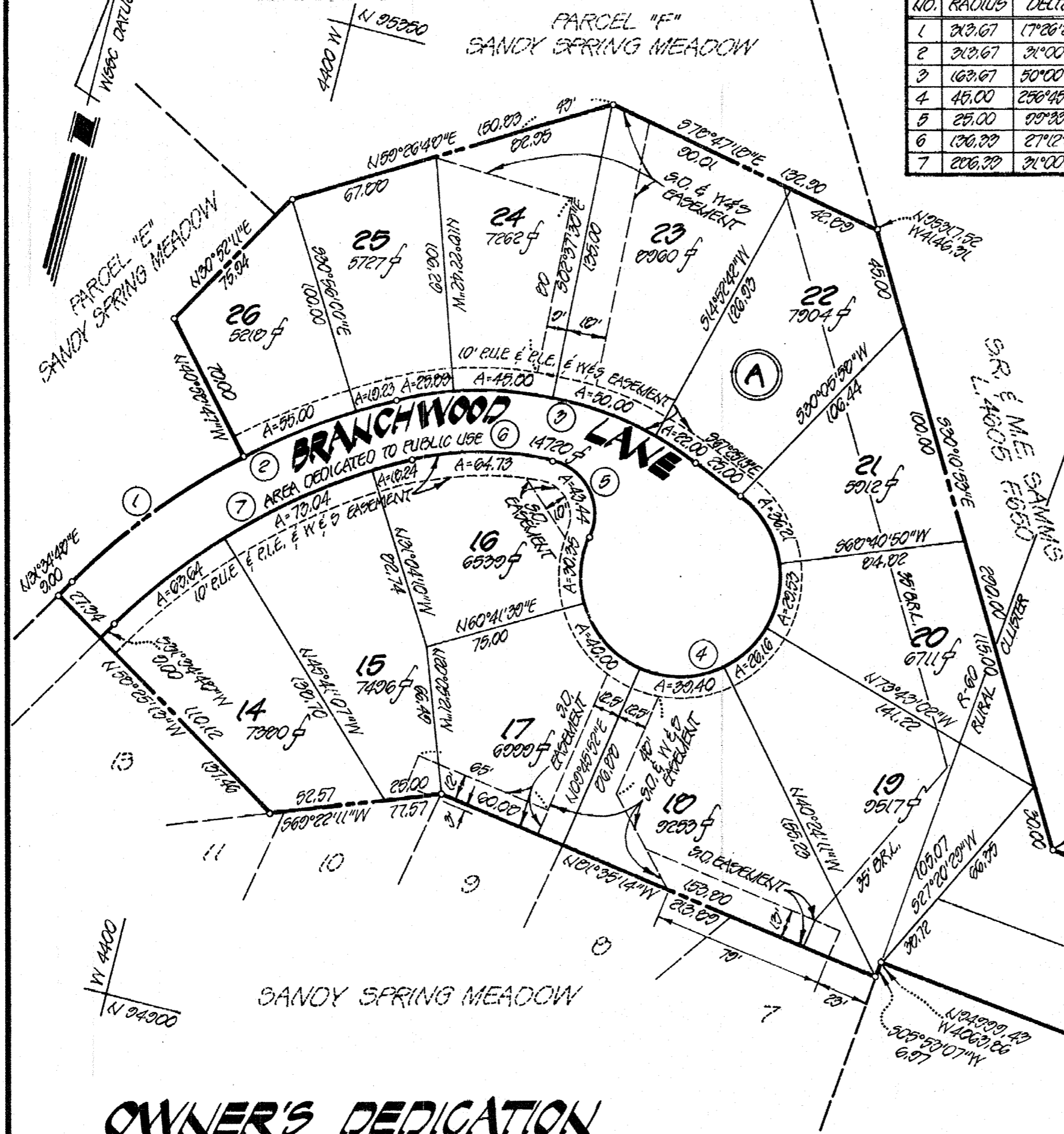
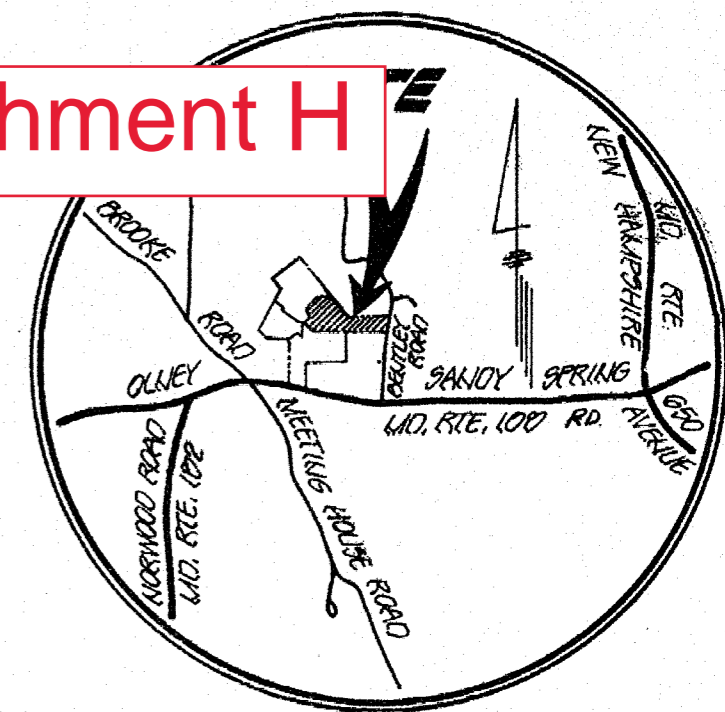


PLAT NO. 14424



NO.	RADIUS	DELTA	ARC.	TAN.	CHORD
1	213.67	17°26'26"	95.40	40.11	1140.10
2	213.67	31°00'00"	100.71	86.00	1147.04
3	163.67	50°00'00"	142.00	70.00	1107.24
4	45.00	256°45'20"	201.66	56.00	560.57
5	25.00	00°20'12"	43.44	20.50	1140.26
6	130.00	27°12'00"	64.70	32.00	370.10
7	200.00	31°00'00"	154.92	70.41	347.04

Attachment H



AREA TABULATION

LOTS (13)	24070 SF OR 2.17010 AC.
AREA DEDICATED (TO PUBLIC USE)	16150 SF OR 0.37000 AC.
PARCELS "C" & "D"	20250 SF OR 0.67000 AC.
TOTAL	140501 SF OR 3.22700 AC.

SURVEYOR'S CERTIFICATE

I HEREBY CERTIFY THAT THE PLAN SHOWN HEREON IS CORRECT; THAT IT IS PART OF THE PROPERTY CONVEYED BY PERRY S. PATTERSON AND CAROLYN G. PATTERSON TO HOUSING OPPORTUNITIES COMMISSION OF MONTGOMERY COUNTY BY DEED DATED SEPTEMBER 10, 1980 AND RECORDED IN LIBER 5504 AT FOLIO 395 AMONG THE LAND RECORDS OF MONTGOMERY COUNTY, MARYLAND.

I FURTHER CERTIFY THAT IRON PILES MARKED THIS AND CONCRETE MONUMENTS MARKED THIS WILL BE SET TO THE FINISHED GRADE IN ACCORDANCE WITH THE REQUIREMENTS OF SECTION 50-24(e) OF THE MONTGOMERY COUNTY CODE.

THE TOTAL AREA DEDICATED TO PUBLIC USE BY THIS PLAT IS 16150 SQUARE FEET AND THE TOTAL AREA INCLUDED IN THIS PLAT IS 140501 SQUARE FEET.

6-2-83
DATE
THOMAS L. WILEY
REG. PROF. LAND SURVEYOR
MD. REG. NO. 0005

OWNER'S DEDICATION

WE, THE UNDERSIGNED, OWNERS OF THE PROPERTY SHOWN AND DESCRIBED HEREON, HEREBY ADOPT THIS PLAN OF SUBDIVISION ESTABLISH THE MINIMUM BUILDING RESTRICTION LINES UNLESS OTHERWISE SHOWN, DEDICATE THE STREETS TO PUBLIC USE AND GRANT TO MONTGOMERY COUNTY, MARYLAND, EASEMENTS 15 FEET WIDE ADJACENT, CONTIGUOUS AND PARALLEL TO THE STREET LINE EXCEPT AS OTHERWISE SHOWN HEREON, SLOPE EASEMENTS SHALL BE AUTOMATICALLY EXTINGUISHED AFTER ALL REQUIRED PUBLIC IMPROVEMENTS ADJUTTING SAME HAVE BEEN LAWFULLY COMPLETED AND HAVE BEEN ACCEPTED FOR MAINTENANCE BY MONTGOMERY COUNTY OR OTHER APPROPRIATE PUBLIC AGENCY.

FURTHER, WE GRANT TO MONTGOMERY COUNTY, MARYLAND, EASEMENTS AS SHOWN HEREON FOR THE CONSTRUCTION, RECONSTRUCTION, MAINTENANCE AND OPERATION OF STORM DRAINS AND APPURTENANCES (SHOWN HEREON AS S.D. EASEMENT).

FURTHER, WE GRANT TO THE WASHINGTON SUBURBAN SANITARY COMMISSION, THEIR SUCCESSORS, AGENTS AND AGENS SPECIFIC EASEMENTS AS SHOWN HEREON FOR THE CONSTRUCTION, RECONSTRUCTION, MAINTENANCE, OPERATION AND/OR FUTURE INSTALLATION OF SEWER, WATER MAINS AND APPURTENANCES (SHOWN HEREON AS W.E.S. EASEMENT).

FURTHER, WE GRANT TO MONTGOMERY COUNTY, MARYLAND, ITS SUCCESSORS AND AGENS FOREVER AN EASEMENT IN, ON AND OVER THE LAND HEREIN IDENTIFIED AS "TEN FOOT WIDE PUBLIC IMPROVEMENT EASEMENT" AND IDENTIFIED AS P.I.E. HEREON WITH THE TERMS AND PROVISIONS OF SAID GRANT BEING THERE SET FORTH IN THAT CERTAIN DOCUMENT ENTITLED "DECLARATION OF EASEMENT" RECORDED AMONG THE LAND RECORDS OF MONTGOMERY COUNTY, MARYLAND, IN LIBER 6101 AT FOLIO 321 WHICH SAID TERMS INCORPORATED HEREIN BY THIS REFERENCE.

FURTHER, WE GRANT TO POTOMAC ELECTRIC POWER CO., CHESEAPEAKE AND POTOMAC TELEPHONE COMPANY OF MARYLAND AND WASHINGTON GAS LIGHT CO., 10 FEET WIDE PUBLIC UTILITIES EASEMENTS (RULE) AS SHOWN HEREON IN ACCORDANCE WITH THE DECLARATION OF TERMS AND PROVISIONS OF PUBLIC UTILITY EASEMENTS, RECORDED IN LIBER 3004 AT FOLIO 457 AMONG THE LAND RECORDS OF MONTGOMERY COUNTY, MARYLAND.

THERE ARE NO SULTS, ACTIONS AT LAW, LEASES, LIENS OR TRUSTS ON THE PROPERTY INCLUDED IN THIS PLAN OF SUBDIVISION, EXCEPT A CERTAIN DEED OF TRUST AND THE PARTIES IN INTEREST THEREIN HAVE HEREOF INDICATED THEIR AGREEMENT.

6-2-83
DATE
Joseph S. McCarthy, Jr.
JOSEPH S. MCCARTHY, JR.
James T. Wharton, Jr.
JAMES T. WHARTON, JR.

PUBLIC WATER AND SEWER SYSTEMS ONLY 2031011821202820921302291060
MARYLAND NATIONAL CAPITAL PARK AND PLANNING COMMISSION
MONTGOMERY COUNTY PLANNING BOARD
APPROVED JUNE 21, 1983
APPROVED JULY 27, 1983
RECORDED
PLAT BOOK
PLAT NO.

NOTES:
1. ZONING: R-60. CLUSTER DEVELOPMENT MUST BE IN ACCORDANCE WITH APPROVED DEVELOPMENT AND SITE PLANS, UNICIF & GC PRELIMINARY PLAN NO. 1-1-1980 APPROVED 2-10-80
2. THIS PLAT CONFORMS WITH THE REQUIREMENTS OF CHAPTER 25-A OF THE MONTGOMERY COUNTY CODE TO PROVIDE MODERATELY PRICED DWELLING UNITS.

LOTS 14 THRU 26, PARCELS "C" & "D" BLOCK A
SANDY SPRING MEADOW
EIGHTH ELECTION DISTRICT
MONTGOMERY COUNTY, MARYLAND
SCALE: 1" = 50'
DATE: MAY, 1983
DEWBERRY AND DAVIS
ENGINEERS ARCHITECTS PLANNERS SURVEYORS
8301 SHADY GROVE COURT
GAITHERSBURG, MARYLAND 20877

MONTGOMERY COUNTY ARCHIVES
MONTGOMERY COUNTY CIRCUIT COURT (Subdivision Plats, MO) Plat 14424
MSA S1249 20680 Data available 1989/08/18. Print 02/10/2021

S-06P04

549-65