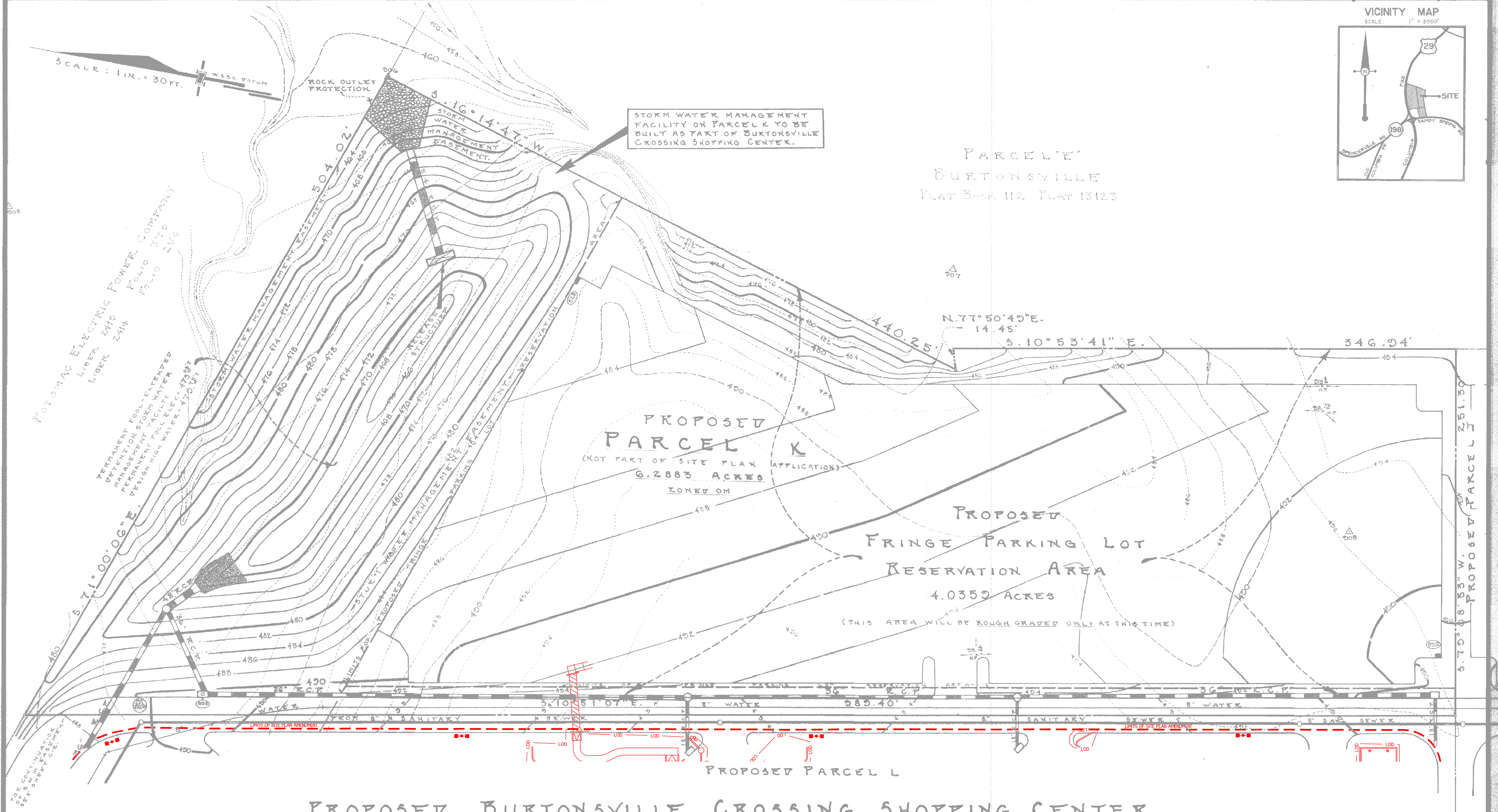


SCALE: 1 IN. = 30 FT.

STORM WATER MANAGEMENT FACILITY ON PARCEL K TO BE BUILT AS PART OF BURTONSVILLE CROSSING SHOPPING CENTER.

PARCEL "E"  
BURTONSVILLE  
PLAT BOOK 112, PLAT 13123

POTOMAC ELECTRIC POWER COMPANY  
LIBER 240 FOLIO 378  
LIBER 244 FOLIO 256



PROPOSED BURTONSVILLE CROSSING SHOPPING CENTER

FOR PROPOSED WORK  
(SEE SHEET C-2)

- Amendment 81985104A Summary:
1. Frontage improvements along Old Columbia Pike.
  2. Partial demolition of existing buildings.
  3. New Retail Buildings.
  4. Parking Modifications and revisions to meet ADA requirements.
  5. Updates to on-site lighting, landscape, pedestrian circulation and open space.

A. MORTON THOMAS and ASSOCIATES, INC. CIVIL ENGINEERS - LAND PLANNERS - LAND SURVEYORS. 12750 TWINBROOK PARKWAY - ROCKVILLE, MARYLAND 20852 - (301) 881-2545			
DES.	DRN. W.J.	CHK.	
DATE	8-25-85	REVISION	REV. GRADING & TYPING WEST END OF TOMB
BY	W.S.J.	APPR.	

SITE PLAN PROPOSED PARCEL K BURTONSVILLE		SCALE 1 IN. = 30 FT.	CONTOUR INTERVAL 2 FT.	A.M.T. FILE No. J-738
COLESVILLE ELECTION DISTRICT No. 5 - MONTGOMERY COUNTY, MARYLAND		DATE Jul. 4, 1985	TAX MAP No. 81	SHEET C-4