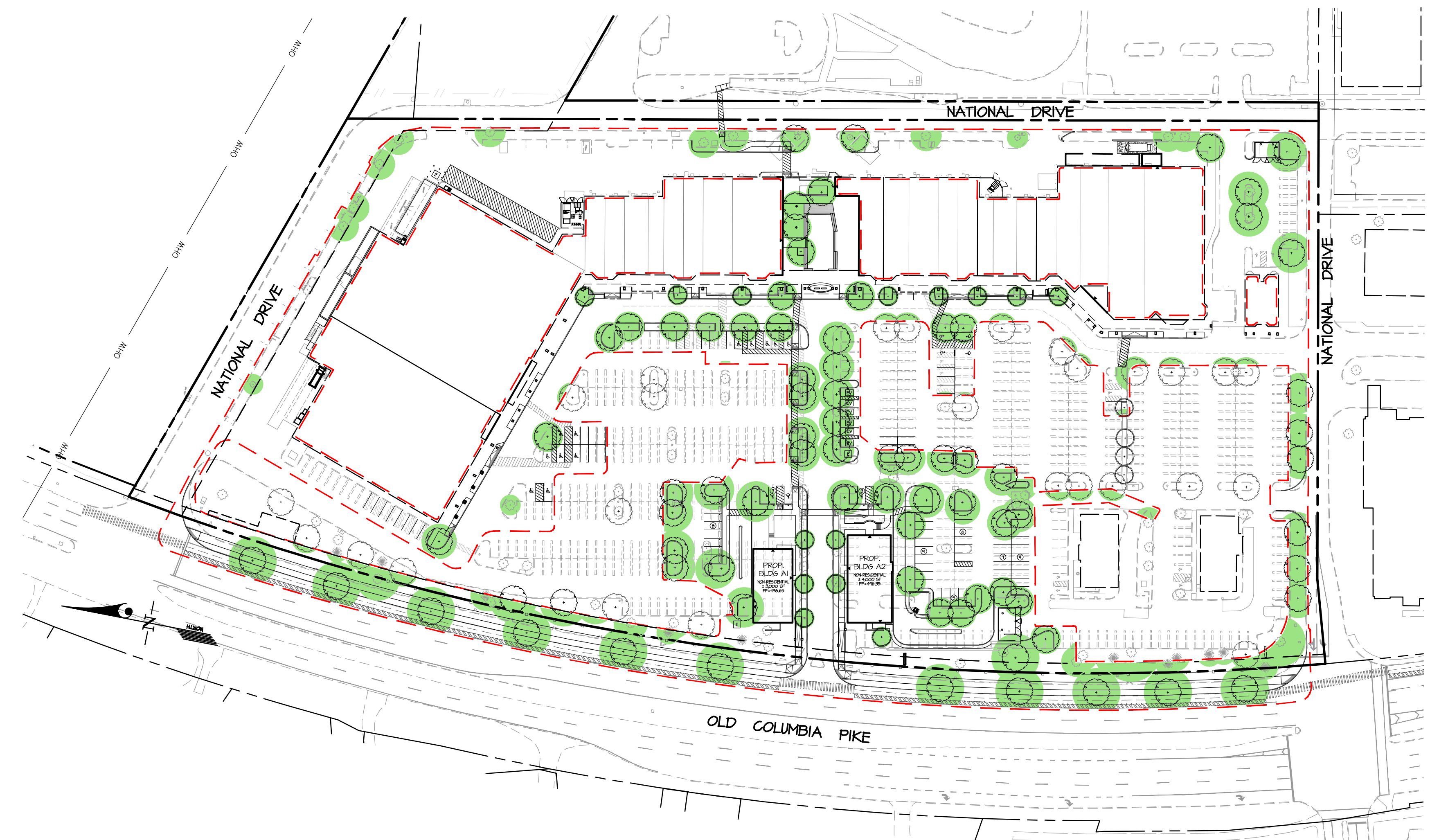




EXISTING TREE CANOPY COVERAGE  
 9% TREE CANOPY COVERAGE WITHIN LIMITS OF SITE PLAN  
 25,810 sf or 0.54 Ac.



PROPOSED TREE CANOPY COVERAGE  
 32% TREE CANOPY COVERAGE WITHIN LIMITS OF SITE PLAN  
 88,610 sf or 2.03 Ac.  
 (TREE CANOPY COVERAGE WITHIN LIMITS OF  
 SITE PLAN INCREASED BY 23%)

- LEGEND**
- - - Site Plan Limits 6.40 Ac.
  - Tree Canopy at 20 years of growth, as defined by the Planning Board's Trees Technical Manual

SITE PLAN No. 81985104A

**GLW**  
 PLANNING [ENGINEERING] SURVEYING  
 3809 NATIONAL DRIVE | SUITE 250 | BURTONSVILLE, MD 20896 | GLWPA.COM  
 PHONE: 301-421-4024 | BALT: 410-880-1500 | DC/VA: 301-489-2524 | FAX: 301-421-4188

DESIGNED BY				
DRAWN BY	KAB			
CHECKED BY				
TML	DATE	REVISION	BY	APPR.

PREPARED FOR:  
 Burtonsville (E&A), LLC  
 1272 5th Street NE  
 Suite 200  
 Washington, DC 20002  
 Attn: Jim McKenney  
 202-902-2600

SCALE	ZONING
1"=80'	CRT-0.75 C-0.5, R-0.25, H-35T & R-90
DATE	TAX MAP - GRID
JUNE, 2022	K5-562

TREE CANOPY COVERAGE EXHIBIT  
**BURTONSVILLE CROSSING SHOPPING CENTER**  
 PARCEL 'L' - BURTONSVILLE  
 Plat No. 16306  
 Deed Book 24792 Page 246  
 COLESVILLE ELECTION DISTRICT No. 05  
 MONTGOMERY COUNTY, MARYLAND

G. L. W. FILE No.  
**16028**  
 SHEET  
 1 OF 1

L:\CAD\DRAWINGS\16028\PLANS BY GLW\BIE PLAN\EXHIBITS\16028-Tree Canopy.dwg