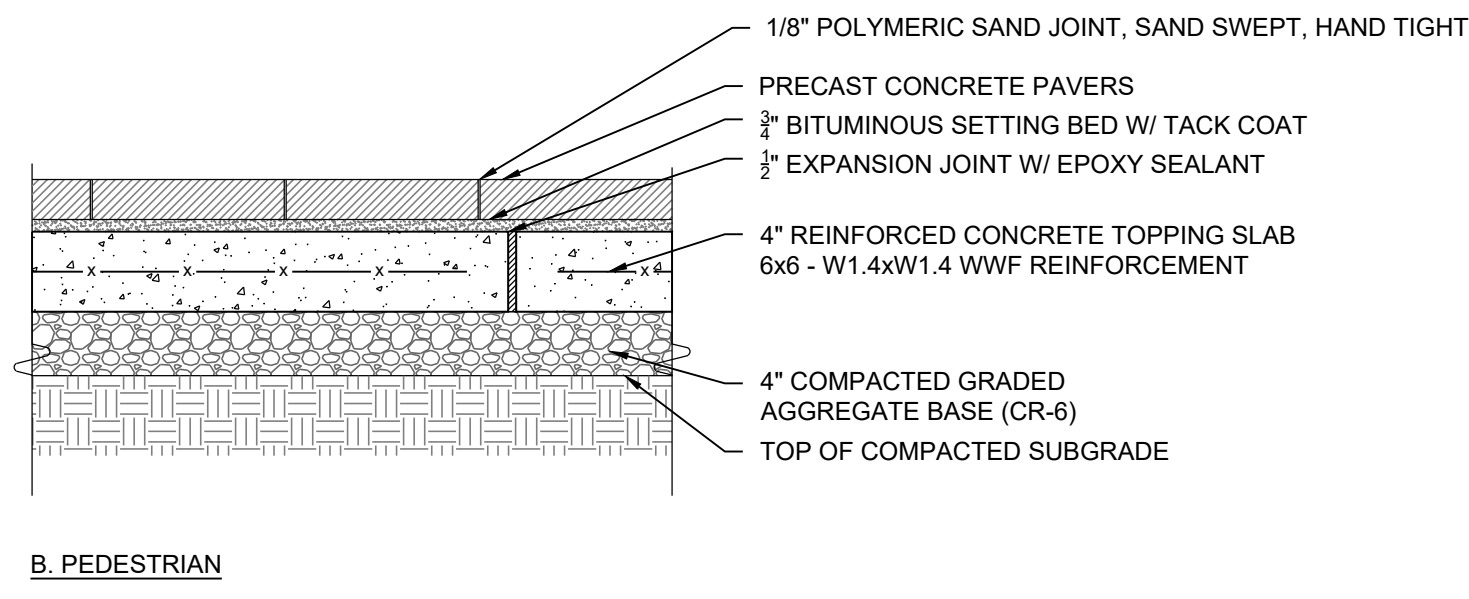
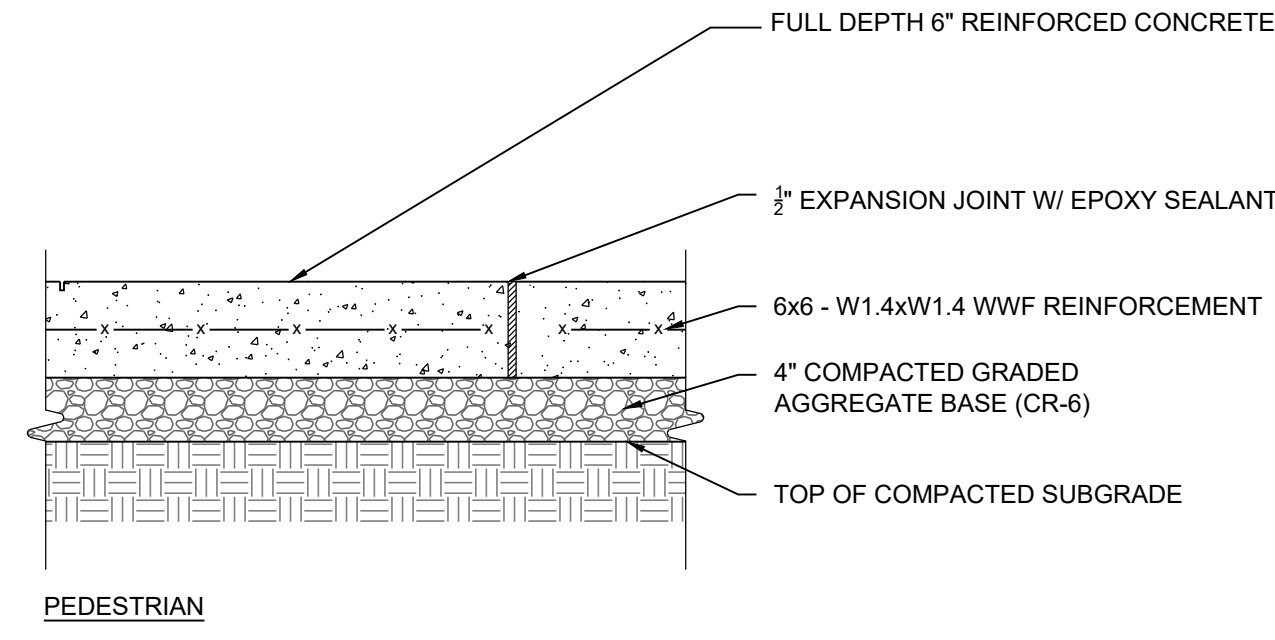
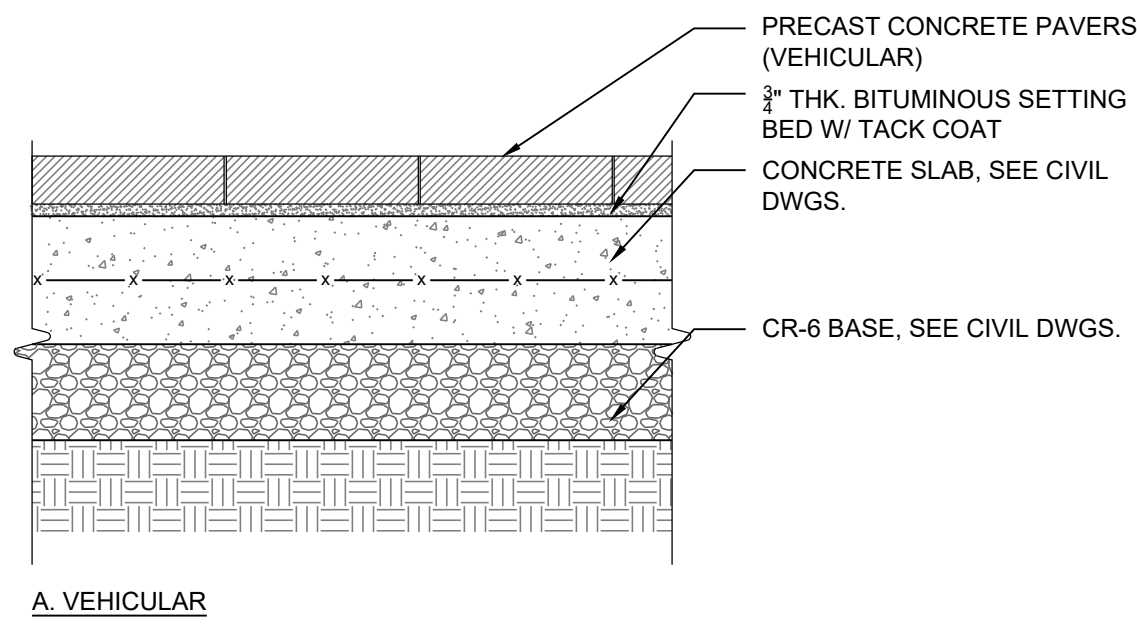


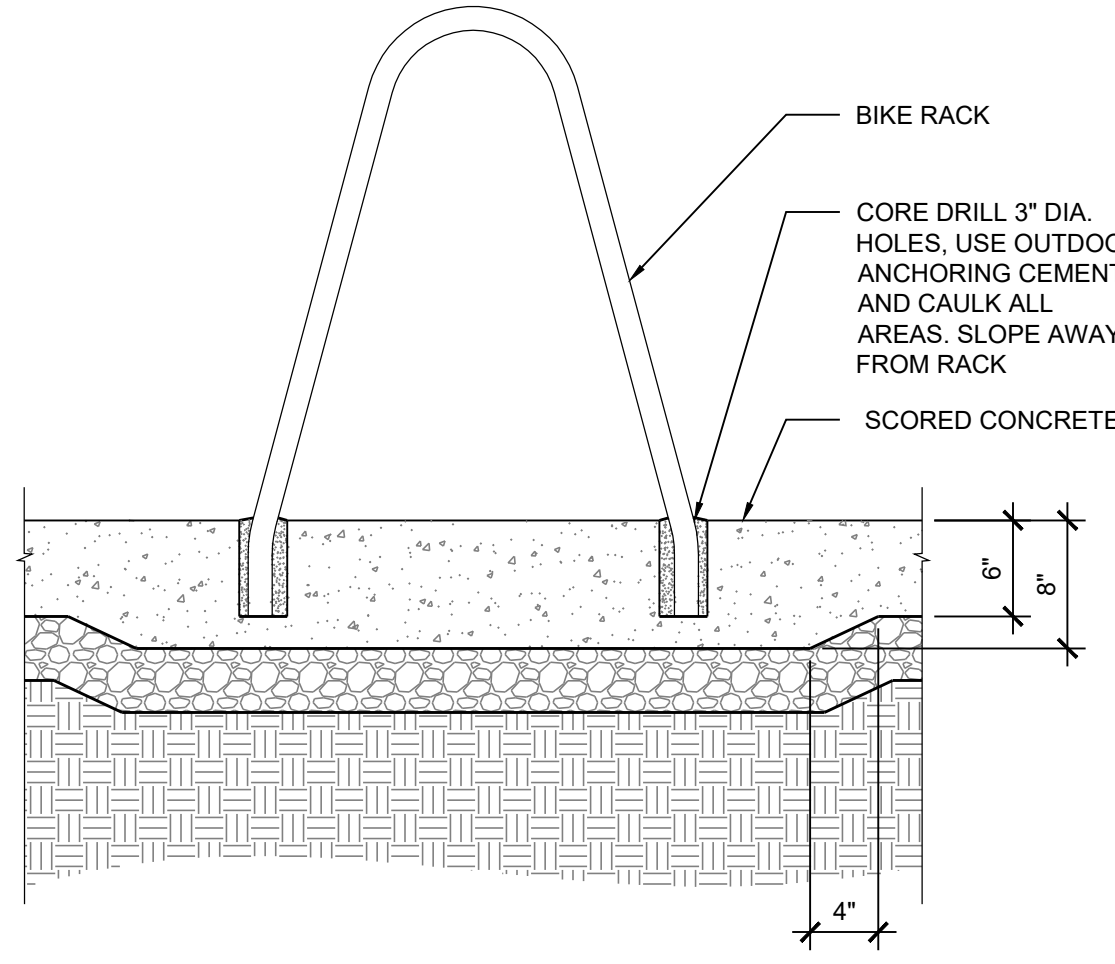
**Certified Site Plan**  
File No. 820150018  
Montgomery County Planning Board Approval

Chair or Designee: \_\_\_\_\_ Date: \_\_\_\_\_

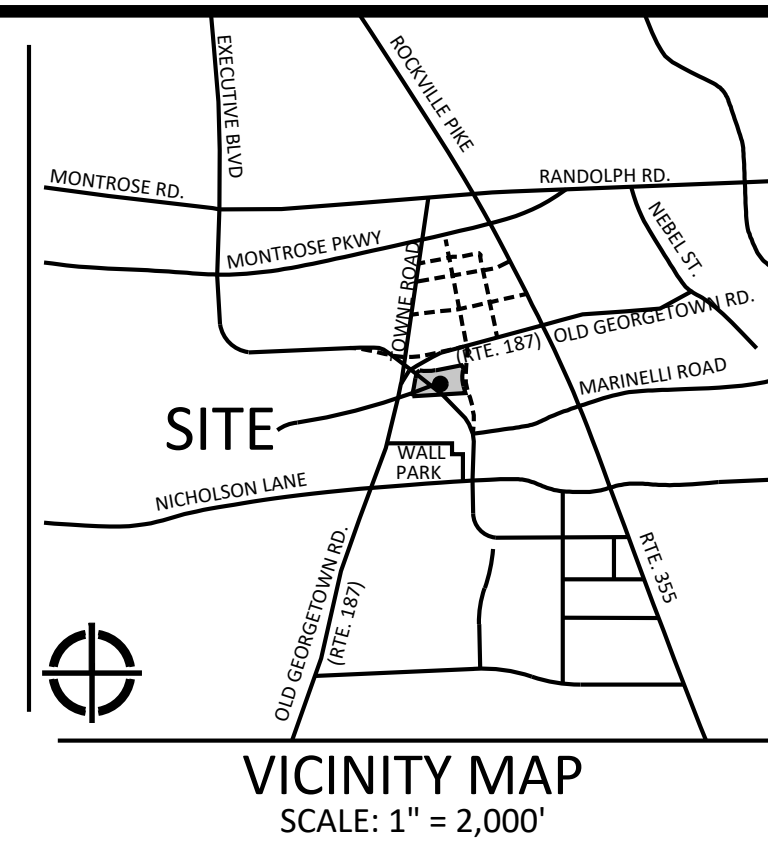


**NOTES:**  
1. REFER TO LANDSCAPE PLANS FOR EXPANSION JOINT LOCATIONS (NOT TO EXCEED 20' O.C.)  
2. CONTRACTOR TO SUBMIT EXPANSION JOINT MATERIAL COLOR OPTIONS TO LANDSCAPE ARCHITECT FOR APPROVAL.

**NOTES:**  
1. CONTRACTOR TO SUBMIT EXPANSION JOINT MATERIAL FOR COLOR SELECTIONS TO LANDSCAPE ARCHITECT FOR APPROVAL.



**PRODUCT INFORMATION**  
MODEL: BOLA BIKE RACK, OR APPROVED EQUAL  
QUANTITY: PER PLAN  
MANUFACTURER: LANDSCAPE FORMS INC. 431 LAWNDALE AVE. KALAMAZOO, MI 49048 LANDSCAPEFORMS.COM  
COLOR & FINISH: STAINLESS STEEL, OR APPROVED EQUAL



**VKA MARYLAND, LLC**  
20251 Century Blvd., Suite 400  
Germantown, MD 20874  
301.916.4100 | vika.com  
Our Site Set on the Future.

PREPARED FOR:  
**STONEBRIDGE**  
301.321.3202  
SMITH@STONEBRIDGE.US.COM

ATTORNEY:  
**SELZER GURVITCH RABIN WERTHEIMER & POLOTT, PC.**  
301.634.3150  
MATT GORDON

ARCHITECTS:  
**EWING COLE**  
215.625.4411  
BRETT SPEARMAN

LANDSCAPE ARCHITECT:  
**MAHAN RYKIEL ASSOCIATES, INC.**  
410.900.1626  
JINGPENG GU, PLA, ASLA

TRAFFIC ENGINEER:  
**WELLS + ASSOCIATES**  
301.971.3415  
NANCY RANDALL

DRY UTILITY CONSULTANT:  
**RICHTER & ASSOCIATES**  
301.XXX.XXXX  
XXXXXX

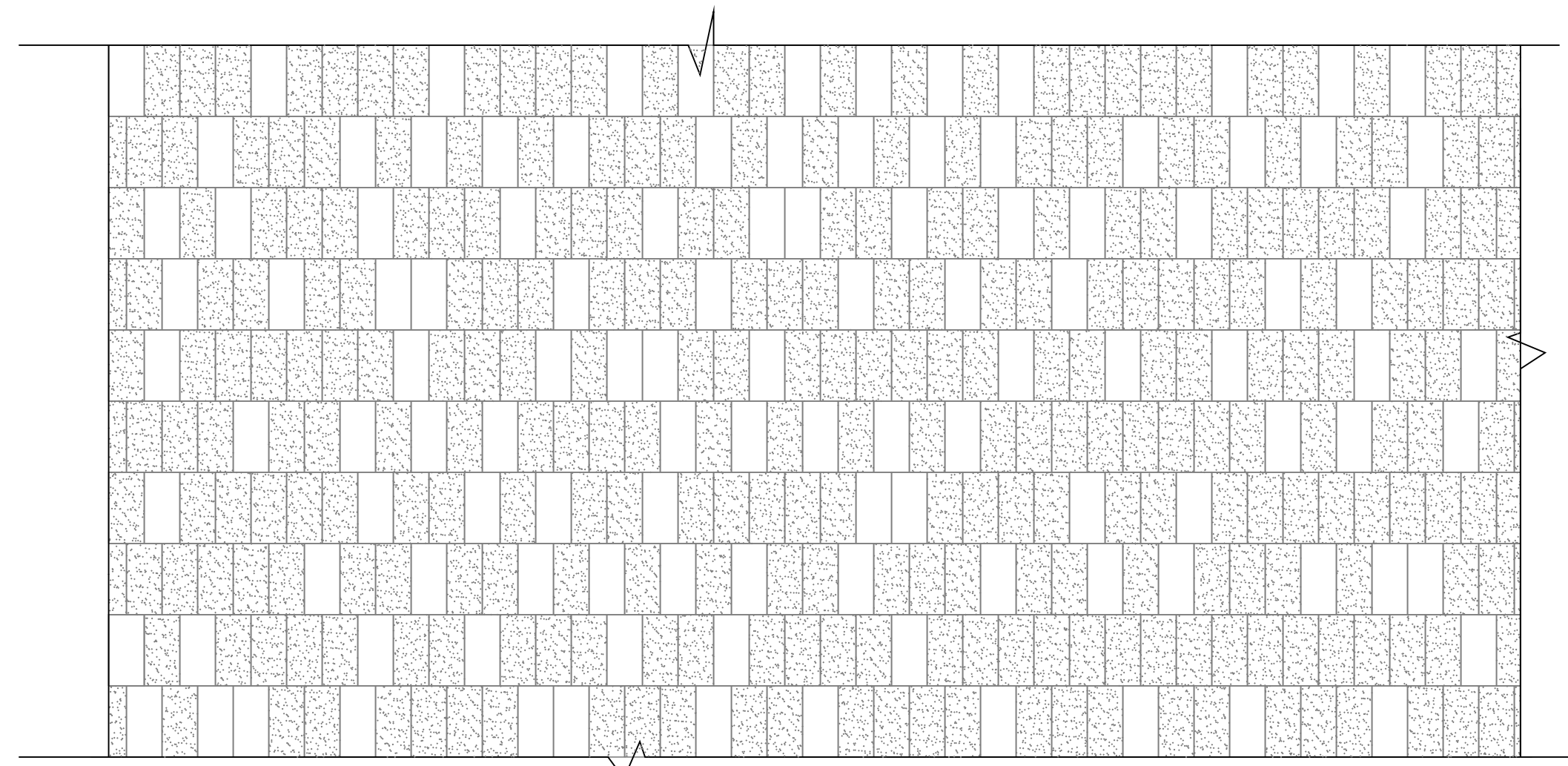
CIVIL ENGINEER:  
**VKA MARYLAND, LLC**  
301.916.4100  
JASON EVANS, P.E.

LAND PLANNER:  
**VKA MARYLAND, LLC**  
301.916.4100  
IAN P. DUKE

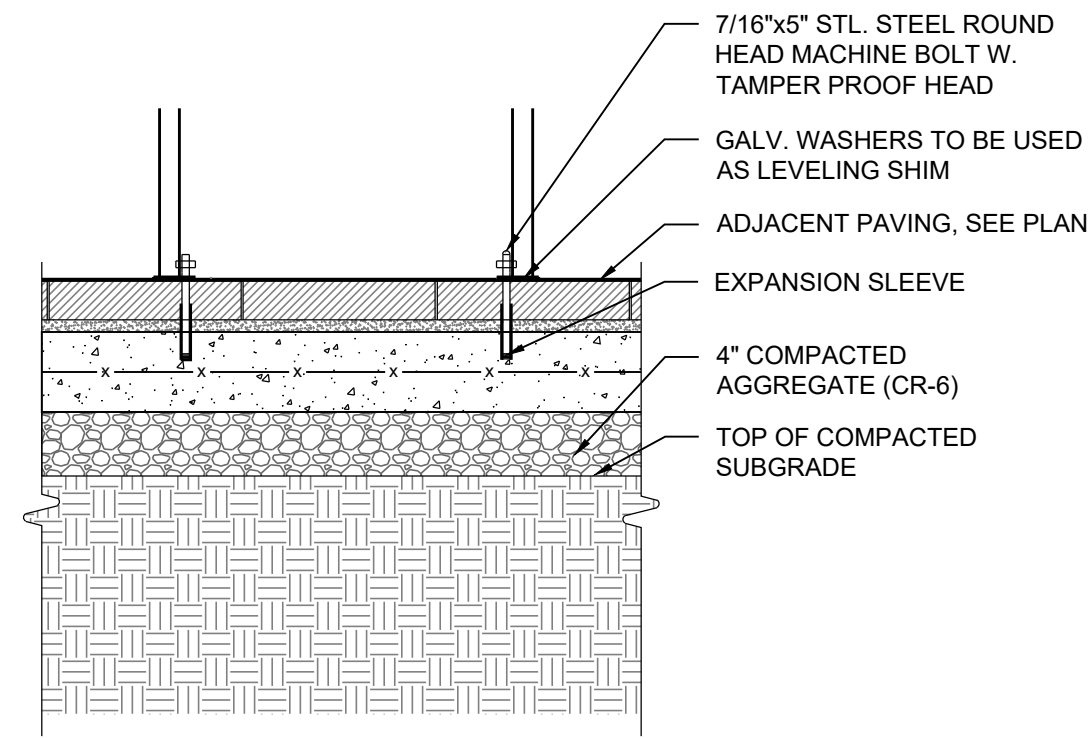
**1 Concrete Walkway**  
1/2"=1'-0"

**2 Concrete Pavers**  
1"=1'-0"

**3 Bike Rack Example**  
1"=1'-0"



**NOTES:**  
1. ILLUSTRATIVE PAVING PATTERN SHOWN FOR DESIGN INTENT ONLY; FINAL DESIGN TO BE COORDINATED WITH ENGINEERED DRAWINGS.  
2. PAVING PATTERN CONSISTS OF MINIMUM 2 COLORS THAT ARE TO BE BLENDED IN VARYING PERCENTAGES.

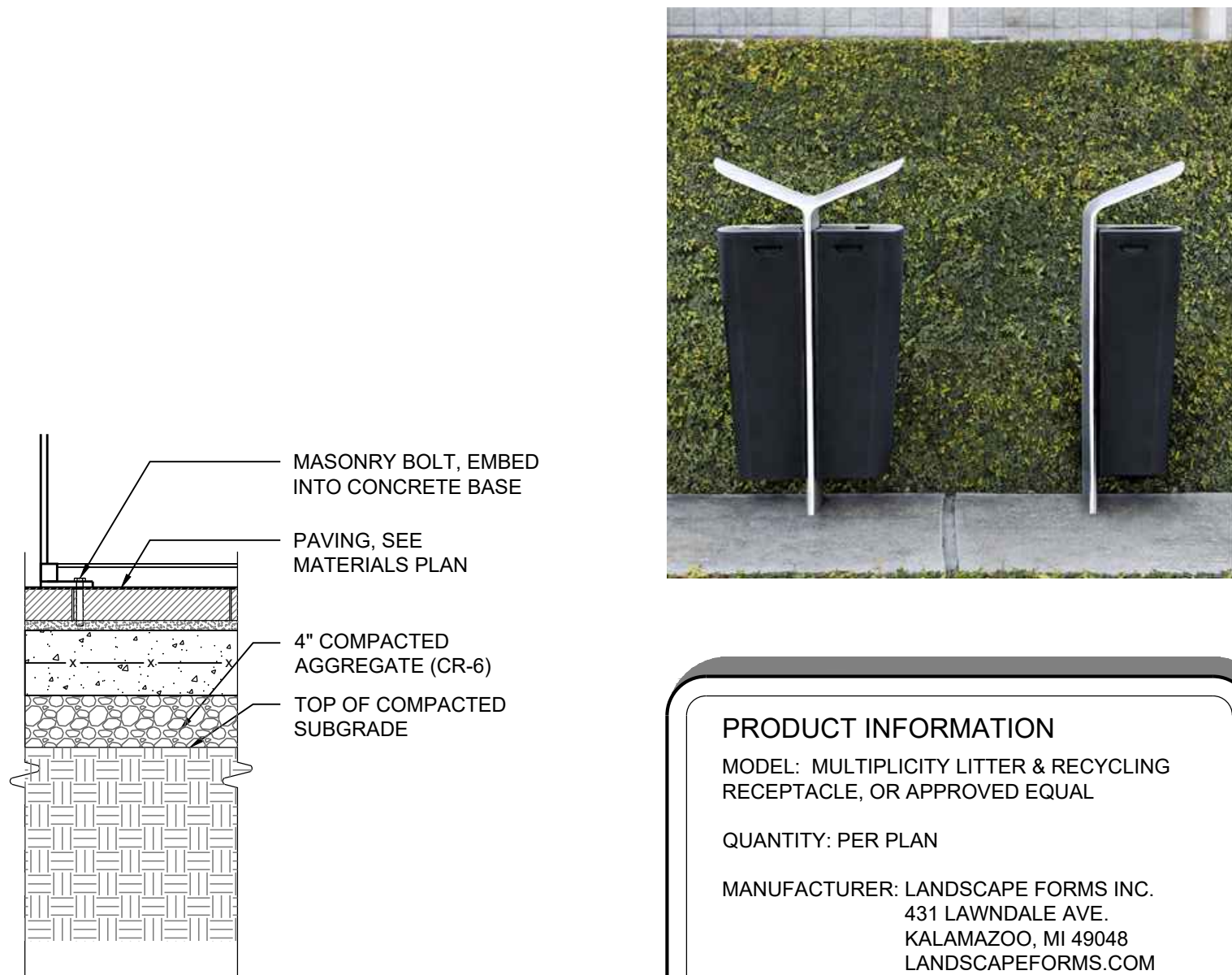


**PRODUCT INFORMATION**  
MODEL: FLOAT BENCH, OR APPROVED EQUAL  
QUANTITY: PER PLAN  
MANUFACTURER: FORMS & SURFACES 30 PINE STREET PITTSBURGH, PA 15223 FORMS-SURFACES.COM  
COLOR & FINISH: TBD



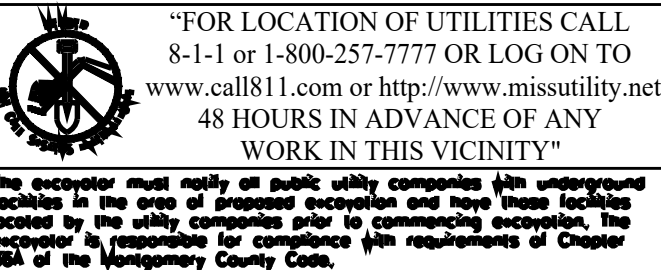
**4 Concrete Pavers**  
1/2"=1'-0"

**5 Bench Type 1 Example - Park Bench**  
NTS



**PRODUCT INFORMATION**  
MODEL: MULTIPLICITY LITTER & RECYCLING RECEPTACLE, OR APPROVED EQUAL  
QUANTITY: PER PLAN  
MANUFACTURER: LANDSCAPE FORMS INC. 431 LAWNDALE AVE. KALAMAZOO, MI 49048 LANDSCAPEFORMS.COM  
COLOR & FINISH: OPEN IN S.S. WITH DIAMOND FINISH, OR APPROVED EQUAL

**6 Trash Receptacle Example**  
1"=1'-0"



LAYOUT: 30-02, Posted By: VJ/mjs



**PRODUCT INFORMATION**  
MODEL: BANCA VIRO, OR APPROVED EQUAL  
QUANTITY: PER PLAN  
MANUFACTURER: KONKRETUS LA ESTRELLA - ANTIOQUIA COLOMBIA, SA KONKRETUS.CO  
COLOR & FINISH: CONCRETE, COLOR TBD, OR APPROVED EQUAL

**7 Bench Type 2 Example - Sculpture Bench**  
NTS



**PRODUCT INFORMATION**  
MODEL: HELIO M30K4 SECURITY BOLLARD, SERIES 900, OR APPROVED EQUAL  
QUANTITY: PER PLAN  
MANUFACTURER: FORMS & SURFACES 30 PINE STREET PITTSBURGH, PA 15223 FORMS-SURFACES.COM  
COLOR & FINISH: SS

**8 Bollard Example**  
NTS

**DEVELOPER'S CERTIFICATE**  
The undersigned agrees to execute all the features of the Site Plan Approval No. 820150018, including Approval Conditions, Development Program and Certified Site Plan.

Developer's Name: \_\_\_\_\_  
Contact Person: \_\_\_\_\_  
Address: \_\_\_\_\_  
Phone: \_\_\_\_\_  
Signature: \_\_\_\_\_ Date: \_\_\_\_\_

DRAWN BY: JG/RJ/EK  
DESIGNED BY: PG/RJ  
DATE ISSUED: 12/21/2022  
VKA PROJECT: VM1614  
DRAWING NO.: \_\_\_\_\_  
SHEET NO. L2.00

REVISIONS	DATE

**EvolutionLabs North Bethesda**  
1st ELECTION DISTRICT  
MONTGOMERY COUNTY, MARYLAND  
WSSC GRID: 215NW06  
TAX MAP: GQ62

82015001B

PROFESSIONAL SEAL



THE INFORMATION, DESIGN AND CONTENT OF THESE DRAWINGS OR DOCUMENTS ARE PROPRIETARY TO VKA MARYLAND, LLC AND CONSTITUTE ITS PROPRIETARY INTELLECTUAL PROPERTY. THESE DRAWINGS AND/OR DOCUMENTS MUST NOT BE REPRODUCED, COPIED, DIGITALLY CONVERTED, MODIFIED OR USED FOR ANY PURPOSE, IN ANY FORMAT, WITHOUT PRIOR WRITTEN AUTHORIZATION FROM VKA MARYLAND, LLC. VIOLATION MAY RESULT IN PROSECUTION. ONLY APPROVED, SIGNED AND SEALED PLANS OR DRAWINGS MAY BE UTILIZED FOR CONSTRUCTION PURPOSES.

© 2023 VKA MARYLAND, LLC