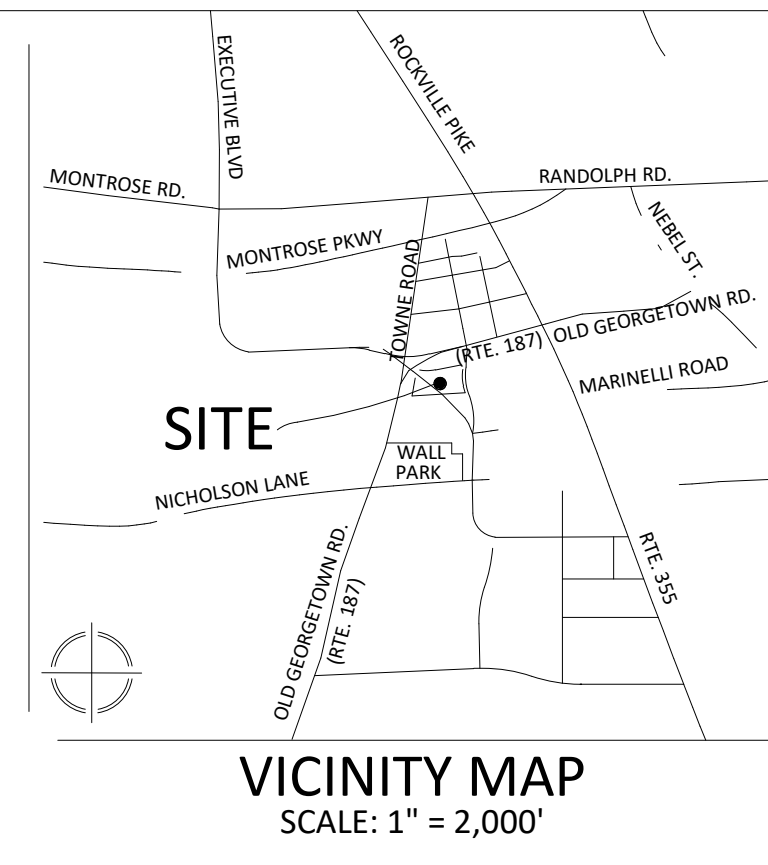


Certified Site Plan  
 File No.  
 Montgomery County Planning Board Approval  
 Chair or Designee: \_\_\_\_\_ Date: \_\_\_\_\_

- NOTES:**
- DRAWINGS ARE CONCEPTUAL ONLY AND REPRESENT PROPOSED DEVELOPMENT IN AN ILLUSTRATIVE MANNER. FINAL BUILDING LOCATIONS, DIMENSIONS, HEIGHTS, USES, PHASING, DENSITY, PARKING, UNIT MIX, DEVELOPMENT STANDARDS AND PROGRAMS SHALL BE DETERMINED AT TIME OF SITE PLAN APPLICATIONS
  - INTERIOR PARTITIONS, INCLUDING CORE LAYOUT, THE NUMBER AND SIZE OF TENANT SPACES, STAIRS, ELEVATORS, TOILET AND LOCKER ROOMS, STRUCTURAL ELEMENTS, AND FACADE ARTICULATION ARE PRELIMINARY AND SHOWN FOR ILLUSTRATIVE PURPOSES ONLY. FINAL LAYOUTS MAY VARY.
  - REFER TO CIVIL AND LANDSCAPE DOCUMENTS FOR EXTERIOR IMPROVEMENTS.
  - LAYOUT OF LONG TERM BIKE STORAGE FACILITY AND EQUIPMENT SELECTION ARE PRELIMINARY. FINAL LAYOUT AND SELECTIONS MAY VARY.
  - LONG TERM BIKE STORAGE FACILITY TO BE EQUIPPED WITH AT LEAST ONE OUTLET FOR EVERY FIVE SPACES, DISTRIBUTED EVENLY.
  - DOORS ACCESSING LONG TERM BIKE STORAGE FACILITY WILL BE EQUIPPED WITH PUSH BUTTON OPERATORS.



**VKA**  
**VKA MARYLAND, LLC**  
 20251 Century Blvd., Suite 400  
 Germantown, MD 20874  
 301.916.4100 | vka.com  
*Our Site Set on the Future.*

PREPARED FOR:  
**STONEBRIDGE**  
 301.321.3202  
 SMITH@STONEBRIDGE.US.COM

ATTORNEY:  
**SELZER GURVITCH  
 RABIN WERTHEIMER &  
 POLOTT, P.C.**  
 301.634.3150  
 MATT GORDON

ARCHITECTS:  
**EWINGCOLE**  
 215.625.4411  
 BRETT SPEARMAN

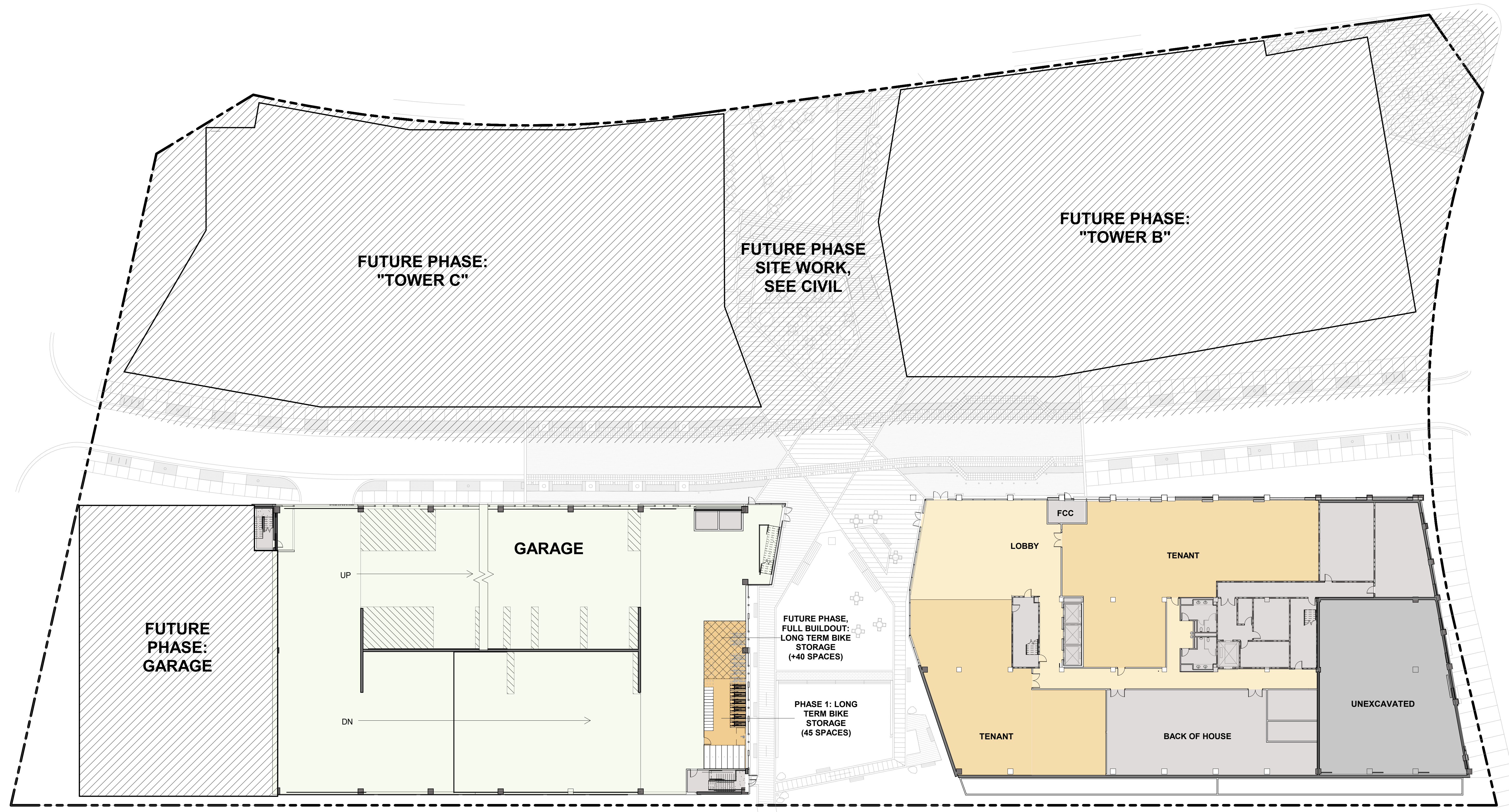
LANDSCAPE ARCHITECT :  
**MAHAN RYKIEL  
 ASSOCIATES, INC.**  
 410.900.1626  
 JINGPENG GU, PLA, ASLA

TRAFFIC ENGINEER :  
**WELLS + ASSOCIATES**  
 301.971.3415  
 NANCY RANDALL

DRY UTILITY CONSULTANT :  
**RICHTER & ASSOCIATES**  
 301.548.7475  
 JOHN O'BOYLE

CIVIL ENGINEER :  
**VKA MARYLAND, LLC**  
 301.916.4100  
 JASON EVANS, P.E.

LAND PLANNER :  
**VKA MARYLAND, LLC**  
 301.916.4100  
 IAN P. DUKE



REVISIONS	DATE

**EvolutionLabs  
 North  
 Bethesda**  
 1st ELECTION DISTRICT  
 MONTGOMERY COUNTY,  
 MARYLAND  
 WSSC GRID: 215NW06  
 TAX MAP: GQ62  
**82015001B**  
 ILLUSTRATIVE FLOOR PLAN



PHASE 1: LONG TERM BIKE STORAGE SCHEDULE	FULL BUILD: LONG TERM BIKE STORAGE SCHEDULE
(7) 30x120 - INVERTED U BOD: DERO HOOP RACK OR EQUAL	(8) 30x120 - INVERTED U BOD: DERO HOOP RACK OR EQUAL
(14) 16x48 - VERTICAL STAGGERED RACK BOD: DERO ULTRA SPACE SAVER SQUARED OR EQUAL	(32) 16x48 - VERTICAL STAGGERED RACK BOD: DERO ULTRA SPACE SAVER SQUARED OR EQUAL
(6) 38x82 - HIGH DENSITY RACK (4 BIKES/RACK) BOD: CYCLE SAFE HI-DENSITY QUAD RACK	(12) 38x82 - HIGH DENSITY RACK (4 BIKES/RACK) BOD: CYCLE SAFE HI-DENSITY QUAD RACK
(1) 45x90 - POLE MOUNTED BICYCLE REPAIR STATION BOD: DERO FIXIT SERVICE STATION OR EQUAL	(1) 45x90 - POLE MOUNTED BICYCLE REPAIR STATION BOD: DERO FIXIT SERVICE STATION OR EQUAL

**DEVELOPER'S CERTIFICATE**

THE UNDERSIGNED AGREES TO EXECUTE ALL THE FEATURES OF THE SITE PLAN APPROVAL NO. 82015001B, INCLUDING APPROVAL CONDITIONS, DEVELOPMENT PROGRAM AND CERTIFIED SITE PLAN

DEVELOPER'S NAME: \_\_\_\_\_  
 DRAWN BY: **WJS**  
 DESIGNED BY: **BS**  
 DATE ISSUED: **1/31/2023**

VKA PROJECT **VM1614**  
 EC PROJECT **20210623**  
 DRAWING NO. \_\_\_\_\_  
 SIGNATURE: \_\_\_\_\_

2 SITE PLAN - ILLUSTRATIVE GROUND FLOOR PLAN  
 SCALE: 1" = 20'-0"

\*FOR LOCATION OF UTILITIES CALL 8-1-1 or 1-800-257-7777 OR LOG ON TO www.call811.com or http://www.missability.net 48 HOURS IN ADVANCE OF ANY WORK IN THIS VICINITY\*