



**VIKA MARYLAND, LLC**  
 20251 Century Blvd., Suite 400  
 Germantown, MD 20874  
 301.916.4100 | vika.com  
*Our Site Set on the Future.*

PREPARED FOR:  
**STONEBRIDGE**  
 301.321.3202  
 SMITH@STONEBRIDGE.US.COM

ATTORNEY:  
**SELZER GURVITCH RABIN  
 WERTHEIMER & POLOTT,  
 P.C.**  
 301.634.3150  
 MATT GORDON

ARCHITECTS:  
**EWING COLE**  
 215.625.4411  
 BRETT SPEARMAN

LANDSCAPE ARCHITECT:  
**MAHAN RYKIEL  
 ASSOCIATES, INC.**  
 410.900.1626  
 JINGPENG GU, PLA, ASLA

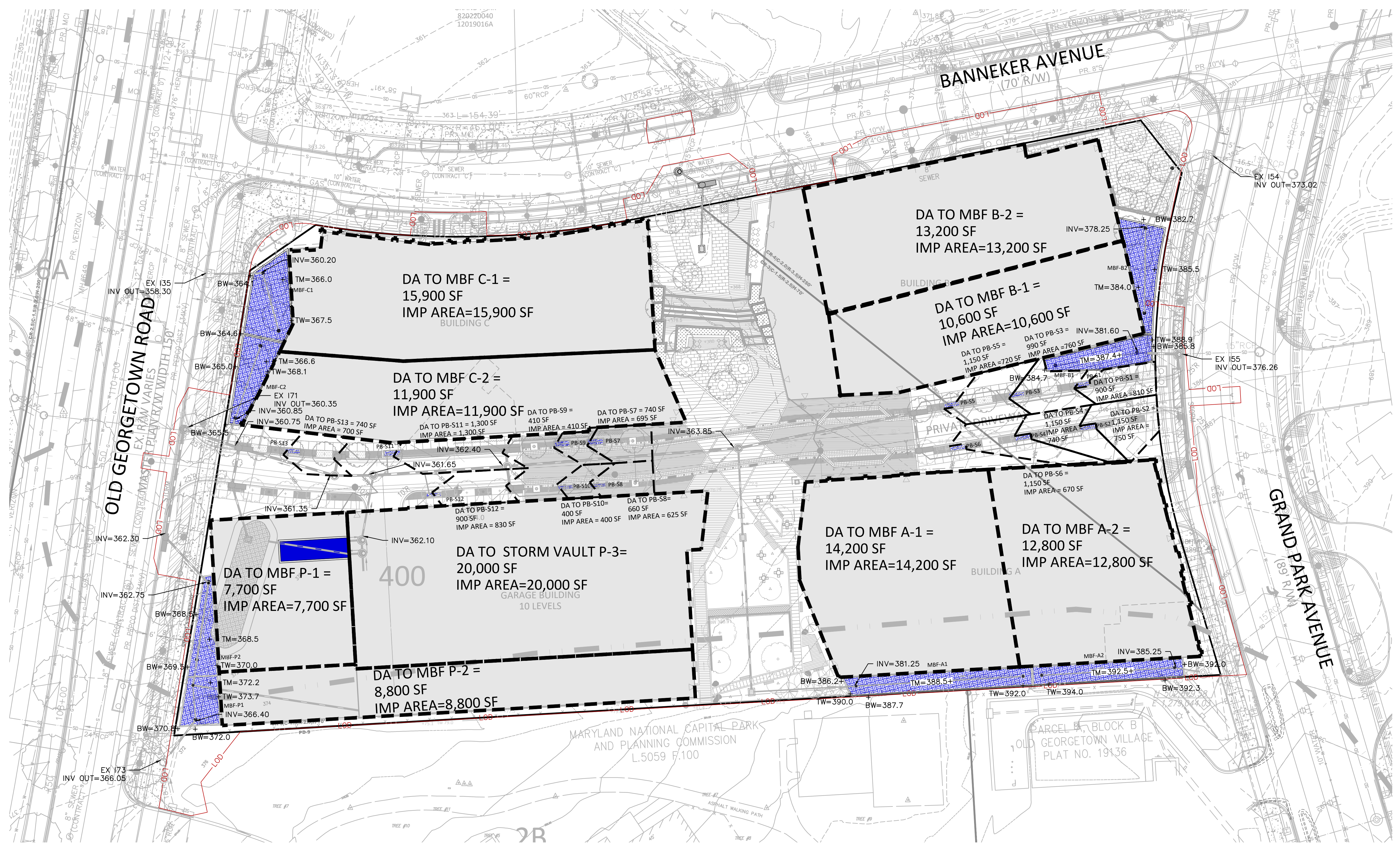
TRAFFIC ENGINEER:  
**WELLS + ASSOCIATES**  
 301.971.3415  
 NANCY RANDALL

DRY UTILITY CONSULTANT:  
**RICHTER & ASSOCIATES**  
 301.548.7475  
 JOHN O'BOYLE

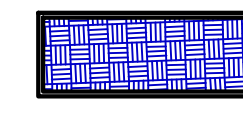


CIVIL ENGINEER:  
**VIKA MARYLAND, LLC**  
 301.916.4100  
 JASON EVANS, P.E.

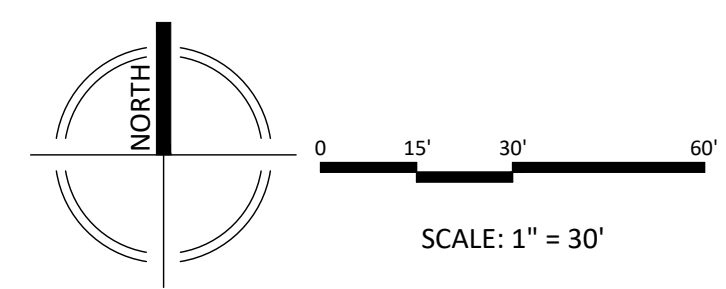
LAND PLANNER:  
**VIKA MARYLAND, LLC**  
 301.916.4100  
 IAN P. DUKE

**VICINITY MAP**  
 SCALE: 1" = 2,000'



**LEGEND**

-  PROP. MICRO-BIORETENTION FACILITY (MBF)
-  LIMIT OF DISTURBANCE (LOD)
-  PROPOSED DRAINAGE DIVIDE

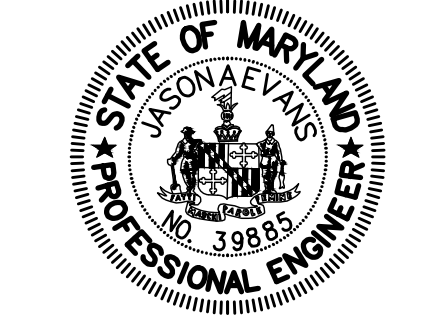


REVISIONS	DATE

**EvolutionLabs**  
 North  
 Bethesda  
 1st ELECTION DISTRICT  
 MONTGOMERY COUNTY,  
 MARYLAND  
 WSSC GRID: 215NW06  
 TAX MAP: GQ62

**82015001B**  
 CONCEPT/SITE  
 DEVELOPMENT  
 SWM PLAN -  
 OVERALL  
 DRAINAGE  
 AREA MAP

PROFESSIONAL SEAL



I HEREBY CERTIFY THAT THESE DOCUMENTS WERE PREPARED OR APPROVED BY ME, AND THAT I AM A DULY LICENSED PROFESSIONAL ENGINEER UNDER THE LAWS OF THE STATE OF MARYLAND. LICENSE NO. 39885. EXPIRATION DATE JANUARY 16, 2025.

THE INFORMATION, DESIGN AND CONTENT OF THESE DRAWINGS OR DOCUMENTS ARE PROPRIETARY TO VIKA MARYLAND, LLC AND CONSTITUTE ITS PROPRIETARY INTELLECTUAL PROPERTY. THESE DRAWINGS AND/OR DOCUMENTS ARE NOT TO BE REPRODUCED, COPIED, DIGITALLY CONVERTED, MODIFIED OR USED FOR ANY PURPOSE, IN ANY FORMAT, WITHOUT PRIOR WRITTEN AUTHORIZATION FROM VIKA MARYLAND, LLC. VIOLATION MAY RESULT IN PROSECUTION. ONLY APPROVED, SIGNED AND SEALED PLANS OR DRAWINGS MAY BE UTILIZED FOR CONSTRUCTION PURPOSES.

© 2019 VIKA MARYLAND, LLC

DRAWN BY: SG  
 DESIGNED BY: ID/JS  
 DATE ISSUED: 09/01/2022

VIKA PROJECT: VM1614  
 DRAWING NO.: CSWM-2

SHEET NO.

"FOR LOCATION OF UTILITIES CALL 8-1-1 or 1-800-257-7777 OR LOG ON TO www.call811.com or http://www.missutility.net 48 HOURS IN ADVANCE OF ANY WORK IN THIS VICINITY"

The excavator must notify all public utility companies with underground facilities on the area of proposed excavation and have those facilities located by the utility companies prior to commencing excavation. The excavator is responsible for compliance with requirements of Chapter 36A of the Montgomery County Code.