



VICINITY MAP
SCALE: 1" = 2,000'



VIKA MARYLAND, LLC
20251 Century Blvd., Suite 400
Germantown, MD 20874
301.916.4100 | vika.com

Our Site Set on the Future.

PREPARED FOR:
STONEBRIDGE
301.321.3202
SMITH@STONEBRIDGE.US.COM

ATTORNEY:
SELZER GURVITCH RABIN
WERTHEIMER & POLOTT,
PC.
301.634.3150
MATT GORDON

ARCHITECTS:
EWING COLE
215.625.4411
BRETT SPEARMAN

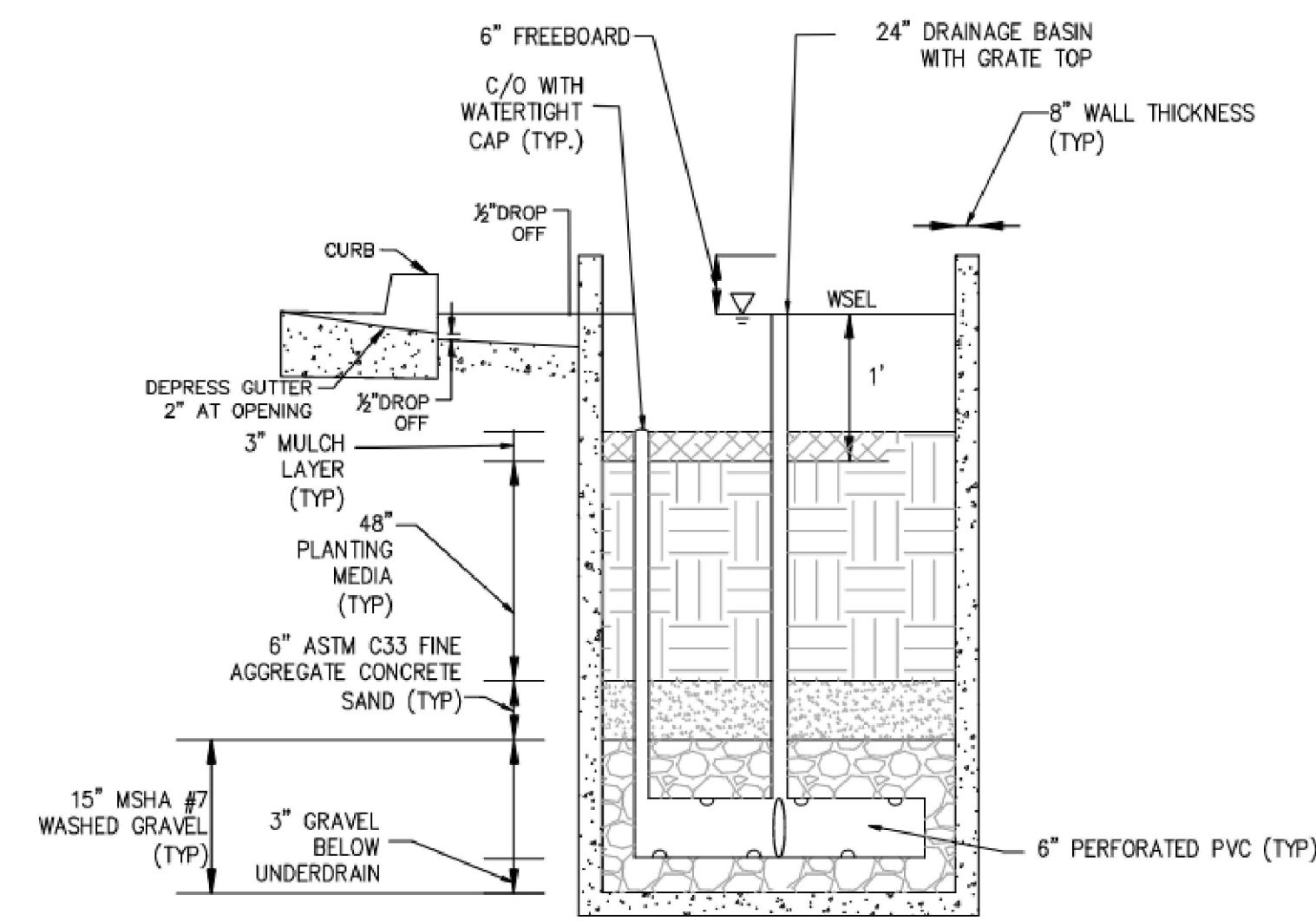
LANDSCAPE ARCHITECT:
MAHAN RYKIEL
ASSOCIATES, INC.
410.900.1626
JINGPENG GU, PLA, ASLA

TRAFFIC ENGINEER:
WELLS + ASSOCIATES
301.973.3415
NANCY RANDALL

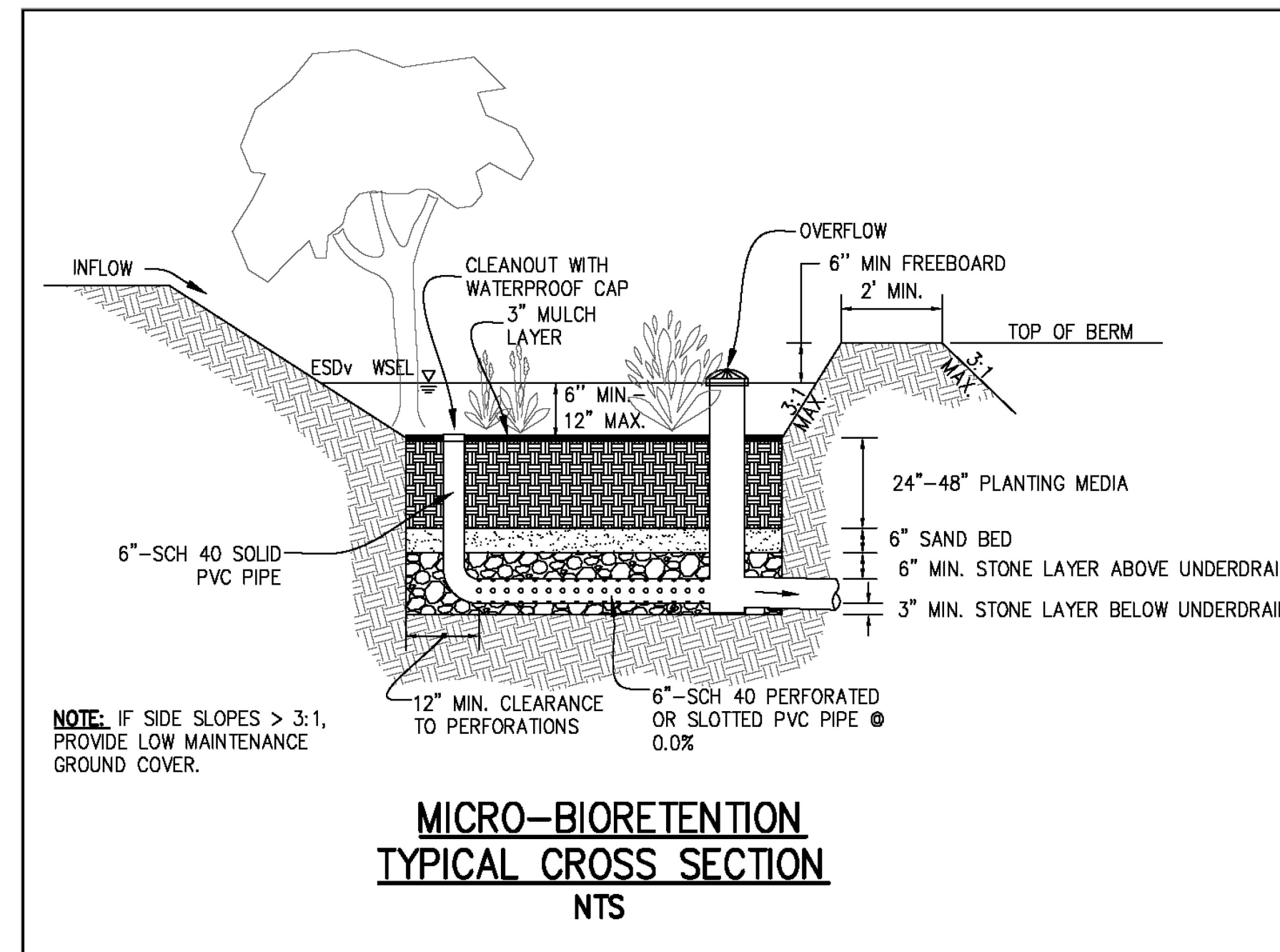
DRY UTILITY CONSULTANT:
RICHTER & ASSOCIATES
301.548.7475
JOHN O'BOYLE

CIVIL ENGINEER:
VIKA MARYLAND, LLC
301.916.4100
JASON EVANS, P.E.

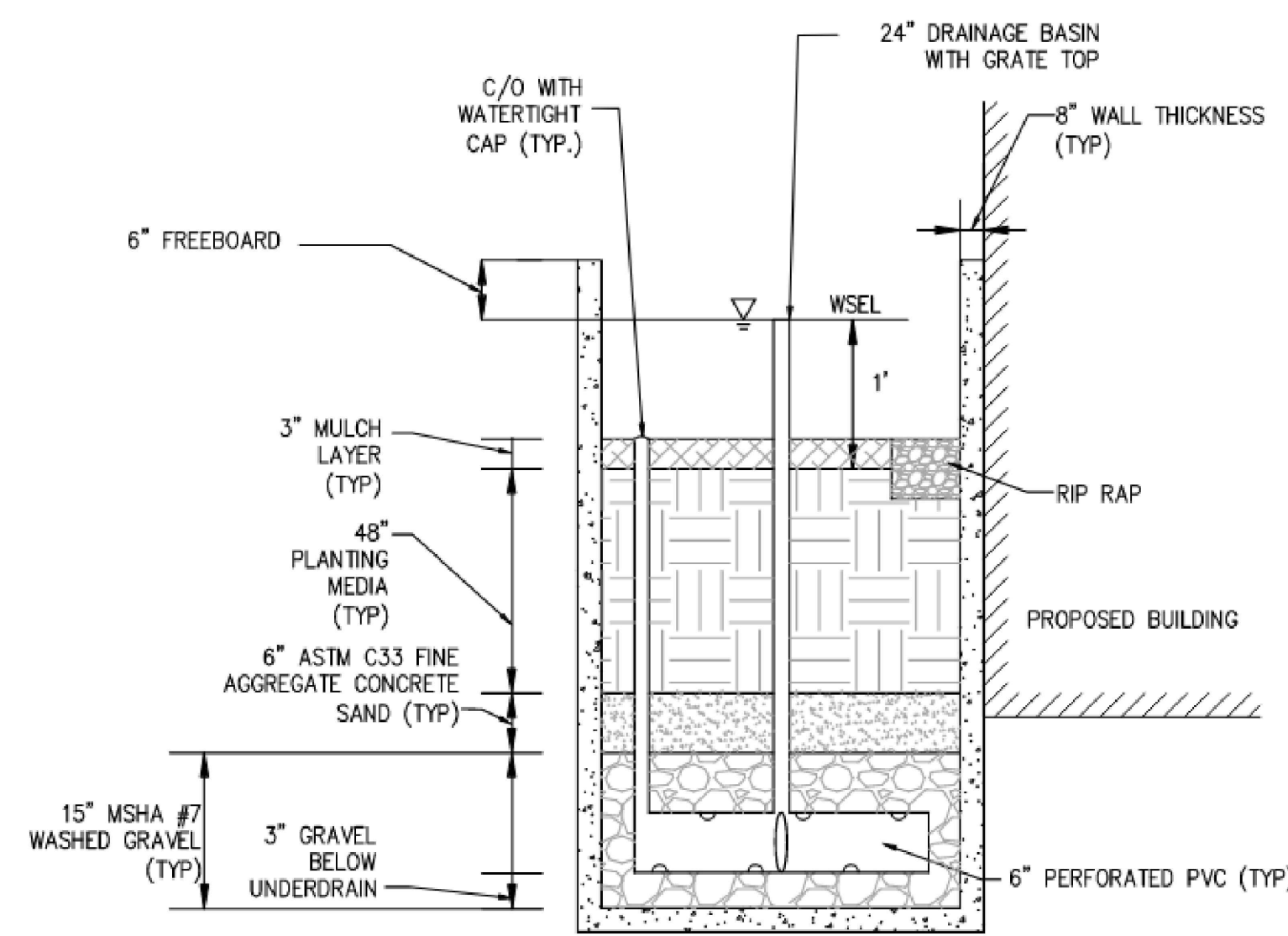
LAND PLANNER:
VIKA MARYLAND, LLC
301.916.4100
IAN P. DUKE



**MICRO-BIORETENTION SECTION (TYP.)
ROADWAY PLANTER**
(NOT TO SCALE)



**MICRO-BIORETENTION
TYPICAL CROSS SECTION
NTS**



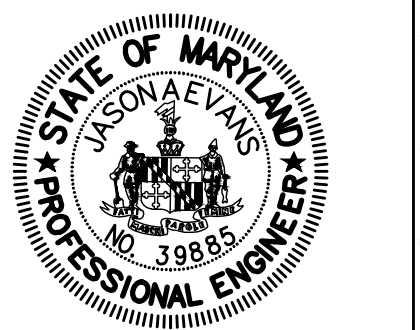
**MICRO-BIORETENTION SECTION (TYP.)
BUILDING ADJACENT PLANTER**
(NOT TO SCALE)

REVISIONS	DATE

EvolutionLabs
North
Bethesda
1st ELECTION DISTRICT
MONTGOMERY COUNTY,
MARYLAND
WSSC GRID: 215NW06
TAX MAP: G062

82015001B
CONCEPT/SITE
DEVELOPMENT
SWM PLAN -
PHASE 1
DETAILS

PROFESSIONAL SEAL



I HEREBY CERTIFY THAT THESE DOCUMENTS WERE PREPARED OR APPROVED BY ME, AND THAT I AM A DULY LICENSED PROFESSIONAL ENGINEER UNDER THE LAWS OF THE STATE OF MARYLAND. LICENSE NO. 39885. EXPIRATION DATE JANUARY 31, 2023.

THE INFORMATION, DESIGN AND CONTENT OF THESE DRAWINGS OR DOCUMENTS ARE PROPRIETARY TO VIKA MARYLAND, LLC AND CONSTITUTE ITS PROPRIETARY INTELLECTUAL PROPERTY. THESE DRAWINGS OR DOCUMENTS MUST NOT BE REPRODUCED, COPIED, DIGITALLY CONVERTED, MODIFIED OR USED FOR ANY PURPOSE, IN ANY FORMAT, WITHOUT WRITTEN AUTHORIZATION FROM VIKA MARYLAND, LLC. VIOLATION MAY RESULT IN PROSECUTION. ONLY APPROVED, SIGNED AND SEALED PLANS OR DRAWINGS MAY BE UTILIZED FOR CONSTRUCTION PURPOSES.

© 2023 VIKA MARYLAND, LLC

DRAWN BY: SG
DESIGNED BY: ID/JS
DATE ISSUED: 09/01/2022

VIKA PROJECT: VM1614
DRAWING NO.: CSWM-4

SHEET NO.

"FOR LOCATION OF UTILITIES CALL 8-1-1 or 1-800-257-7777 OR LOG ON TO www.call811.com or http://www.msutility.net 48 HOURS IN ADVANCE OF ANY WORK IN THIS VICINITY"

The acceptor must notify all public utility companies with underground facilities in the area of proposed excavation and have those facilities located by the utility companies prior to commencing excavation. The acceptor is responsible for compliance with requirements of Chapter 36A of the Montgomery County Code.

LAYOUT: CSWM-4, Plotted By: nardo