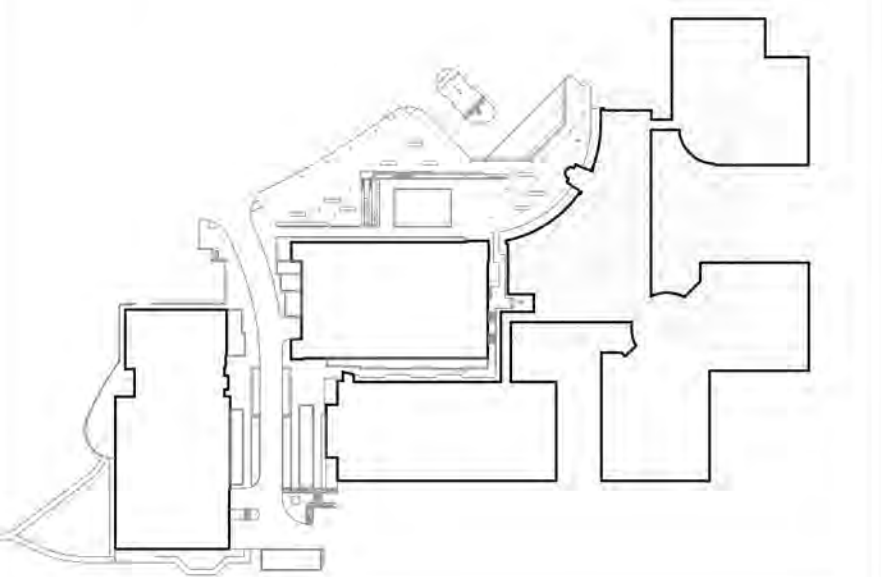


CONSULTANTS  
**CIVIL SITE ENGINEERS**  
 55 TIGER CREEK DRIVE  
 21086 PINE BLUFF, MD 21150  
 Phone: 301-641-2333  
**LAND PLANNERS & LANDSCAPE ARCHITECTS**  
 WISE  
 405 South Lenoir Hwy  
 Columbia, SC 29202  
 Phone: (843) 726-1200  
**STRUCTURAL ENGINEERS**  
 FALSBY ASSOCIATES, INC.  
 805 1st Street  
 Baltimore, MD 21202  
 Phone: (410) 511-5566  
**MISCELLANEOUS ENGINEERS**  
 JENSEN ENGINEERING, INC.  
 8011 7th Street  
 Nottingham, MD 21070  
 Phone: (410) 331-1300  
**SUSTAINABILITY CONSULTANTS**  
 LOCAL PARTNERSHIPS, LLC  
 1201 1st Street  
 Baltimore, MD 21202  
 Phone: (410) 681-0100

**AMENDMENT SUMMARY**  
 #81995045H

- 1. INSTALL ENTRANCE CANOPY FROM THE NEW GARAGE TO BUILDING A ENTRANCE
- 2. ADJUST TREE LOCATION AND DECK STRUCTURE IN NEW PLAZA TO ACCOMMODATE CANOPY
- 3. REVISE FOUNDATION PLANTINGS TO ACCOMMODATE CANOPY

**KEY PLAN**



PRINCIPAL  
 ANDY KNIGHT, PLA  
 PROJECT MANAGER  
 RICK ESPE, PLA



Professional Certification: I certify that these documents were prepared or approved by me, and that I am a duly licensed landscape architect under the laws of the State of Maryland.  
 License No: 01-4189 Expiration Date: 01/28/23

**REVISIONS**

NO.	BY	DESCRIPTION	DATE

#81995045H 10-13-2023



**ALEXANDRIA**  
 ALEXANDRIA REAL ESTATE EQUITIES, INC

9808 MEDICAL CENTER DRIVE  
 BUILDING E & PARKING DECK

ROCKVILLE, MD 20850

DRAWN BY DB DATE 02-19-2021

PROJECT NO. SCALE

DRAWING NAME

LANDSCAPE PLAN

FLOOR/SECTION/PHASE DRAWING NO.

CD L4.3

**PLANTING NOTES**

1. SECURE PLANT MATERIAL AS SPECIFIED ON PLANS. SUBSTITUTIONS FOR PLANT MATERIALS WILL NOT BE ALLOWED WITHOUT PRIOR WRITTEN APPROVAL BY THE LANDSCAPE ARCHITECT.
2. PROVIDE PLANT SAMPLES OR PHOTOGRAPHS OF EACH PLANT SPECIFIED TO THE LANDSCAPE ARCHITECT FOR COMPLIANCE REVIEW PRIOR TO INSTALLATION.
3. PROTECT PLANT MATERIAL DURING DELIVERY TO PREVENT DAMAGE TO ROOT BALLS, TRUNKS, BRANCHES AND THE DESICCATION OF LEAVES. PROTECT PLANT MATERIAL DURING SHIPPING WITH SHADE CLOTH OR SHIP WITH ENCLOSED TRANSPORT. MAINTAIN PROTECTIONS AND HEALTH OF PLANT MATERIAL STORED ON SITE. HANDLE TREES WITH NYLON STRAPS. NO CHAINS OR CABLES WILL BE ALLOWED. REMOVE UNACCEPTABLE PLANT MATERIAL IMMEDIATELY FROM THE SITE.
4. PLANT MATERIAL DELIVERED TO THE SITE IS SUBJECT TO THE REVIEW OF THE LANDSCAPE ARCHITECT BEFORE, DURING AND AFTER INSTALLATION.
5. VERIFY PLANTING PRODUCTS, PLANT MATERIAL, AND PLANT QUANTITIES DELIVERED TO THE SITE MATCH WHAT IS INDICATED ON THE PLANS AND SPECIFICATIONS.
6. STAKE BED LINES AND TREE LOCATIONS FOR THE LANDSCAPE ARCHITECT'S REVIEW PRIOR TO INSTALLATION. PLANTING PROCEDURES ARE SUBJECT TO THE REVIEW OF THE LANDSCAPE ARCHITECT AND THE CONTRACTOR SHALL CORRECT ANY DEFICIENCIES FOUND AT NO ADDITIONAL COST TO THE OWNER.
7. REFER TO THE PLANTING DETAILS FOR MINIMUM SIZE AND WIDTH OF PLANTING PITS AND BEDS, GUYING AND STAKING, MULCHING, AND OTHER PLANTING REQUIREMENTS.
8. ROOT BALLS SHALL CONFORM TO THE SIZE STANDARDS SET FORTH IN 'AMERICAN STANDARDS FOR NURSERY STOCK'.
9. TEST FILL EACH TREE AND PLANTING PIT WITH WATER, PRIOR TO PLANTING TO ASSURE PROPER SOIL PERCOLATION. PITS WHICH DO NOT ADEQUATELY DRAIN SHALL BE FURTHER SCARIFIED ALONG OUTER EDGES AND SIDES OF PIT. DO NOT DISTURB AREA SUPPORTING TREE BALL. REPEAT TEST. ALLOWANCES WILL NOT BE MADE FOR PLANT MATERIAL LOSS DUE TO IMPROPER DRAINAGE.
10. PLANT MATERIALS, INCLUDING RELOCATED PLANT MATERIAL, SHALL BE PLANTED IN A PROFESSIONAL MANNER TYPICAL TO THE INDUSTRY STANDARDS OF THE AREA TO ASSURE COMPLETE SURVIVABILITY OF PLANT MATERIALS AS WELL AS TO PROVIDE AN AESTHETICALLY APPROVED PROJECT.
11. REMOVE PLANTING AND LANDSCAPE DEBRIS FROM THE PROJECT SITE AND SWEEP AND WASH CLEAN PAVED AND FINISHED SURFACES AFFECTED BY THE LANDSCAPE INSTALLATION.
12. PLANTING AREAS SHALL BE WEED FREE PRIOR TO PLANTING INSTALLATION AND MAINTAINED WEED FREE THROUGH FINAL ACCEPTANCE.
13. ALL LAWN AND LANDSCAPE BEDS TO HAVE A COMPLETE IRRIGATION SYSTEM COMPRISED OF SPRAY/ROTOR HEADS AND SUBSURFACE DRIP.
14. MULTI-ZONE SYSTEM DESIGNED TO SUPPORT BOTH TREES AND PERENNIALS. SYSTEM TO INCLUDE CONTROLLER CAPABLE OF USING INPUT FROM RAIN AND MOISTURE SENSORS AS WELL AS LOCAL WEATHER DATA.
15. MAINLINE TO EXTEND FROM ROOM WITHIN BUILDING.
16. STORMWATER PLANTINGS SHALL BE PER MCDPS.

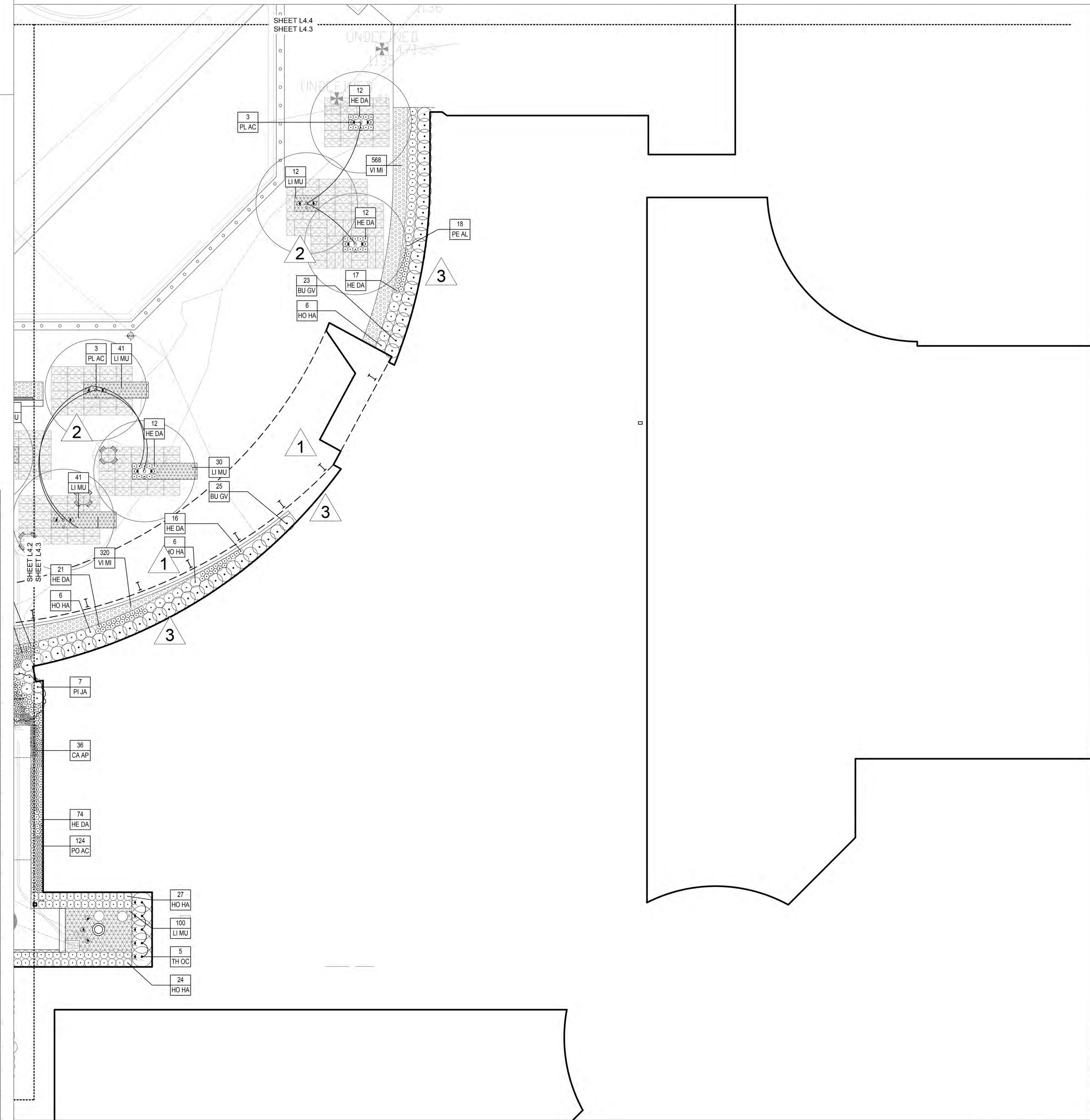
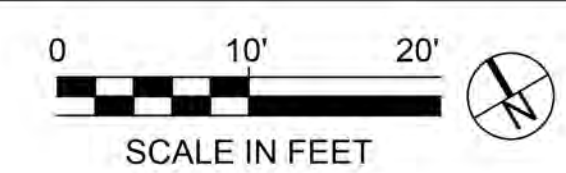
**CERTIFIED SITE PLAN 81995045**

**DEVELOPER'S CERTIFICATE**

The undersigned agrees to execute all the features of the Site Plan Approval No. 81995045H, including Approval Conditions, Development Program, and Certified Site Plan.

Developer's Name: ARI-HOFFMAN No. 24, LLC  
 Contact Person: Ari Hoffman  
 Address: 946 Copper Road, Gaithersburg, MD 20878  
 Phone: 301.947.1770

Signature: \_\_\_\_\_  
 Authorized Signatory



**PLANNING DEPARTMENT USE ONLY (E-PLANS)**

**PLANTING LEGEND**

KEY	SCIENTIFIC NAME	COMMON NAME
<b>DECIDUOUS TREES</b>		
AC RU	<i>Acer rubrum</i> 'October Glory'	October Glory Red Maple
BE NI	<i>Betula nigra</i> 'Heritage'	Heritage River Birch
CA BE	<i>Carpinus betulus</i> 'Frans Fontaine'	Frans Fontaine European Hornbeam
PL AC	<i>Carpinus x acerifolia</i> 'Morton Circle'	Exclamation London Planetree
<b>ORNAMENTAL TREES</b>		
AM GR	<i>Amelanchier x grandiflora</i> 'Autumn Brilliance'	Autumn Brilliance Serviceberry
CE CA	<i>Cercis canadensis</i>	Eastern Redbud
<b>EVERGREEN SHRUBS</b>		
BU GV	<i>Buxus</i> 'Green Velvet'	Green Velvet Boxwood
PI JA	<i>Pieris japonica</i>	Japanese Pieris
TH OC	<i>Thuja occidentalis</i>	American Arborvitae
<b>DECIDUOUS SHRUBS</b>		
HY PA	<i>Hydrangea paniculata</i> 'Little Lime'	Little Lime Hydrangea
<b>GROUNDCOVERS, PERENNIALS, AND TURF MIXES</b>		
CA AP	<i>Carex appalachica</i>	Appalachian Sedge
HE DA	<i>Heuchera</i> 'Dayglow Pink'	Foamy Bells
HO HA	<i>Hosta</i> 'Halcyon'	Halcyon Hosta
LI MU	<i>Liriodendron</i> 'Royal Purple'	Royal Purple Lily Turf
NE FA	<i>Nepeta x faassenii</i> 'Walker's Low'	Walker's Low Catmint
PE AL	<i>Pennisetum alopecuroides</i> 'Hameln'	Dwarf Fountain Grass
PO AC	<i>Polystichum acrostichoides</i>	Christmas Fern
SA NE	<i>Salvia nemorosa</i> 'Caradonna'	Meadow Sage
VI MI	<i>Vinca minor</i>	Periwinkle

**PLANTING LEGEND**

SYMBOL	DESCRIPTION
[Symbol]	SEEDED LAWN
[Symbol]	SODDED LAWN
[Symbol]	WILDFLOWER SEED MIX
[Symbol]	STORMWATER MANAGEMENT AREA BIORETENTION SEED MIX
[Symbol]	STORMWATER MANAGEMENT AREA PERENNIAL PLANT MIX
[Symbol]	PERIWINKLE
[Symbol]	LILYTURF