

DRAWING INDEX

EG.1 ELECTRICAL GENERAL NOTES
 EL0.1 ELECTRICAL SITE LIGHTING PLAN
 EL0.2 ELECTRICAL SITE LIGHTING PHOTOMETRIC PLAN

LUMINAIRES

- EXTERIOR LUMINAIRE - POLE MOUNTED
- SURFACE MOUNTED FACADE LIGHT
- WALL RECESSED STEPLIGHT
- CATENARY LUMINAIRE
- DOWNLIGHT - SURFACE OR RECESSED
- INGRADE UPLIGHT
- SURFACE MOUNTED FACADE LIGHT
- WALL RECESSED STEPLIGHT

SCHEDULE NOTES:

- CONTRACTOR TO COORDINATE LENGTHS WITH ARCHITECTURAL DRAWINGS AND FIELD CONDITIONS. FIELD VERIFY ALL DIMENSIONS PRIOR TO ORDERING.
- PROVIDE ALL CONNECTORS, JOINERS, POWER WHIP CONNECTIONS, ETC. FOR A COMPLETE FULLY FUNCTIONING SYSTEM.
- CONTRACTOR SHALL CONFIRM AND COORDINATE ALL CEILING MOUNTING REQUIREMENTS OF LUMINAIRES WITH ARCHITECTURAL PLANS, FIELD CONDITIONS, AND SUBMITTALS ON A ROOM BY ROOM BASIS.
- REFER TO MOUNTING DETAILS FOR FURTHER INFORMATION.
- CONTRACTOR SHALL BE RESPONSIBLE FOR PROVIDING ALL REQUIRED POWER SUPPLY TYPES AND ADDITIONAL CONTROL PRODUCTS FOR EACH LUMINAIRE TO COORDINATE WITH THE SELECTED LIGHTING CONTROL SYSTEM.
- CONTRACTOR SHALL BE RESPONSIBLE FOR POWER SUPPLY LOAD SIZE AND FINAL QUANTITIES, BASED ON COORDINATION WITH ARCHITECTURAL DRAWINGS, LUMINAIRE SCHEDULE, AND FIELD CONDITIONS, FOR A COMPLETE FULLY FUNCTIONING SYSTEM.
- REMOTE POWER SUPPLIES TO BE LOCATED IN NEARBY, DRY, VENTILATED, ACCESSIBLE LOCATION WITHIN MANUFACTURER'S MAX DISTANCE REQUIREMENTS, WITH LOCATIONS MARKED CLEARLY ON DRAWINGS.
- CONTRACTOR TO MOUNT FIXTURES PER MANUFACTURER'S INSTRUCTIONS, CONFIRM SECURE MOUNTING WITH DRAWINGS BEFORE POURING CONCRETE.

AMENDMENT SUMMARY

#8 1995045H

- INSTALL ENTRANCE CANOPY FROM THE NEW GARAGE TO BUILDING A ENTRANCE
- ADJUST TREE LOCATION IN NEW PLAZA TO ACCOMMODATE CANOPY
- REMOVE ROW OF FOUNDATION PLANTINGS TO ACCOMMODATE CANOPY
- REMOVE (1) TYPE M5 POLE LIGHT DUE TO SUFFICIENT LIGHTING FROM CANOPY

TYPE	DESCRIPTION	MFR	CATALOG NUMBER	SOURCE		POWER SUPPLY		VOLTAGE	MOUNTING	QTY	FIXTURE IMAGE	NOTES
				TYPE	WATTS	NO.	TYPE					
C1	RECESSED LED WET LOCATION DOWNLIGHT, 1.25" DIAMETER APERTURE, 8" LONG X 8" WIDE X 4.5" TALL HOUSING, 25° BEAM SPREAD, REMOTE 0-10V DIMMING DRIVER SHARED BETWEEN FIXTURES, 550 DELIVERED LUMENS.	USAI	M1RDF-07X4C-30KS-25-M0-BL-BL-NC-RM-(ACCESSORIES) RPD-04-07X4C-UNV-D6E-ENC (AS NECESSARY) RED-(SIZE)-(QTY)-04-07X4C-UNV-1-D6E (AS NECESSARY)	LED 3000K	7	-	REMOTE ELECTRONIC 0-10V DIMMING DRIVER	UNV	RECESSED	20		3
C2	RECESSED LED WET LOCATION DOWNLIGHT, 3" DIAMETER APERTURE, 15" LONG X 6" WIDE X 3" TALL HOUSING, 55° BEAM SPREAD, INTEGRAL 0-10V DIMMING DRIVER TO 1%, 1430 DELIVERED LUMENS.	USAI	B3RDF-15X3-30KS-55-S-(TRIM)-(COLLAR)-FT-UNV -D22-(ACCESSORIES)	LED 3000K	15	1	ELECTRONIC 0-10V DIMMING DRIVER	UNV	RECESSED	2		
CT1	CATENARY LUMINAIRE, ALUMINUM EXTRUSION, ALUMINUM POWDER COAT FINISH, CLEAR DIFFUSED TEMPERED GLASS LENS, TYPE 5 DISTRIBUTION	LANDSCAPE FORMS	TML-16-A-1-TV-C-BK ACCESSORY: TML-03-BK	LED 3000K	20	1	ELECTRONIC DRIVER WITH REMOTE XFMR	UNV	CATENARY - APPROX. 12FT AFF	6		2,4
G1	RECESSED LED IN GRADE WALL WASHER, 12-9/16" LONG X 4-1/4" WIDE X 5-5/32" DEEP, STAINLESS STEEL HOUSING, TEMPERED SAFETY GLASS DIFFUSER, IP67 RATED, ASYMMETRIC BEAM SPREAD, ALUMINUM SLEEVE WITH CASE REMOVING VACUUM, REMOTE LED DRIVER, 1270-1400 DELIVERED LUMENS.	HEPER	LR9012.582-US-WW-350-830-ONOFF-UNI-C1-SS 007500582 160404012	LED 3000K	10	1	EXTERNAL DIMMING DRIVER	UNV	IN GRADE	3		2,8
L1	LED FLEXIBLE LINEAR TAPELIGHT WITH WHITE MOUNTING CLIP, WET LOCATION LISTED, LENGTHS AS SHOWN ON DRAWINGS X .38" WIDE, .38" TALL, FROSTED LENS, REMOTE 0-10V DIMMING DRIVER, APPROXIMATELY 140 LUMENS PER FOOT.	Q-TRAN	ANDB-SW-WSC-WET-30-VHO-ENC(TL)-(TYPE)-(INPUT/OUTPUT) -(END CAPS)-(LENGTH)-(FINISH) DRIVER: QZ-(SIZE)-UNV-24V-ND-WH	LED 3000K	4 W/FT	-	ELECTRONIC DRIVER WITH REMOTE XFMR	24V UNV	SURFACE MOUNTED IN ARCHITECTURAL NICHE	~140L F		1,2,4,5, 6,7
L2	LED WET LOCATION LINEAR WALL-GRAZER, LENGTHS AS SHOWN ON DRAWINGS X .38" WIDE, .38" TALL, ACRYLIC LENS, 25° BEAM SPREAD, REMOTE 0-10V DIMMING DRIVER, 169 DELIVERED LUMENS PER FOOT.	Q-TRAN	VERS-04-SW-1.5-30-WET-25D-L1-BK-(INPUT/OUTPUT) -(WIRE IN)-(WIRE OUT)-BK-(WIRE TYPE)-CC-BK-(LENGTH) DRIVER: QZ-(SIZE)-UNV-24V-ND-WH	LED 3000K	3 W/FT	-	ELECTRONIC DRIVER WITH REMOTE XFMR	24V UNV	SURFACE MOUNTED IN ARCHITECTURAL NICHE	~44 LF		1,2,4,5, 6,7
M1	25' TALL .188 THICK ALUMINUM POLE WITH LED WET-RATED AREA LUMINAIRE, NOMINAL 27.9" LONG X 16" WIDE X 4.3" TALL ALUMINUM HOUSING, CLEAR GLASS, TYPE III DISTRIBUTION, INTEGRAL 0-10V DIMMING DRIVER, 14,700 DELIVERED LUMENS. B2-U0-G2	GE LIGHTING	EALS-03-0-AW-7-30-N-D-D1-DKBZ POLE: RTA-25-D-8-B-4-BM	LED 3000K	116	1	ELECTRONIC 0-10V DIMMING DRIVER	UNV	POLE - 25FT	3		8
M2	25' TALL ALUMINUM POLE WITH LED WET-RATED AREA LUMINAIRE, NOMINAL 21.75" LONG X 15.5" WIDE X 4" TALL ALUMINUM HOUSING, CLEAR GLASS, TYPE III DISTRIBUTION, INTEGRAL 0-10V DIMMING DRIVER, 4880 DELIVERED LUMENS. B1-U0-G1	MCGRAW-EDISON	GLEON-SA1A-830-U-T3-(FINISH) POLE: RTA-8-L-25-A-(FINISH)-(MOUNTING)-1-RTA8LxxA	LED 3000K	34	1	ELECTRONIC 0-10V DIMMING DRIVER	UNV	POLE - 25FT	5		8
M3	14' TALL ALUMINUM POLE WITH LED WET-RATED AREA LUMINAIRE, 23-1/4" DIAMETER, 23-7/8" TALL ALUMINUM HOUSING, CLEAR GLASS ACRYLIC LENS, POLYESTER POWDER COAT FINISH, TYPE II DISTRIBUTION, INTEGRAL 0-10V DIMMING DRIVER, 3444 DELIVERED LUMENS.	SELUX	AST1-R2-A-5G350-30-14-(FINISH)-UNV-DM POLE: AT74-20-(FINISH)-T30	LED 3000K	32	1	ELECTRONIC 0-10V DIMMING DRIVER	UNV	POLE - 14FT	6		8
M3A	14' TALL ALUMINUM POLE WITH LED WET-RATED AREA LUMINAIRE, 23-1/4" DIAMETER, 23-7/8" TALL ALUMINUM HOUSING, CLEAR GLASS ACRYLIC LENS, POLYESTER POWDER COAT FINISH, TYPE V DISTRIBUTION, INTEGRAL 0-10V DIMMING DRIVER, 3444 DELIVERED LUMENS.	SELUX	AST1-R5R-A-5G350-30-14-(FINISH)-UNV-DM POLE: AT74-20-(FINISH)-T30	LED 3000K	32	1	ELECTRONIC 0-10V DIMMING DRIVER	UNV	POLE - 14FT	2		8
M4	20' TALL STEEL AND WOOD POLE WITH (2) LED WET-RATED AREA LUMINAIRES, EACH NOMINAL 12" DIAMETER X 10" TALL ALUMINUM HOUSING, OPAL GLASS, WIDE FLOOD DISTRIBUTION, INTEGRAL 0-10V DIMMING DRIVER, 1580 DELIVERED LUMENS, FIXTURES MOUNTED AT 18' AND 15' MARKS ON POLE, CATENARY HOOK MOUNTING.	LANDSCAPE FORMS STRUCTURA	(2X) TML-16-A-1-WF-O-BK (2X) TML-02-BK POLE: BEAM-18-8-6-C5-A16-B13-S3-CAT -MOD: WOOD STOPS AT 16'	LED 3000K	40 (20 EACH)	2	ELECTRONIC 0-10V DIMMING DRIVER	UNV	POLE - 20FT	5		8
M5	25' TALL STEEL POLE WITH (3) LED WET-RATED ADJUSTABLE AREA LUMINAIRES, EACH NOMINAL 12" DIAMETER X 16" TALL ALUMINUM HOUSING, OPAL GLASS, FLOOD DISTRIBUTION, INTEGRAL 0-10V DIMMING DRIVER, 2280 DELIVERED LUMENS.	LANDSCAPE FORMS	(3X) ARP-18-A-1-F-O-DK POLE:ARF41	LED 3000K	66 (22 EACH)	3	ELECTRONIC 0-10V DIMMING DRIVER	UNV	POLE - 25FT	2		8
N2	SURFACE MOUNTED DIRECT-VIEW RGBW LUMINAIRE, NOMINAL 6" LONG X 2" WIDE X 2.5" TALL HOUSING, EXTRUDED WHITE FLAT DIFFUSER, 120° DISTRIBUTION, REMOTE POWER SUPPLY AND DMX CONTROLLER.	GVA LIGHTING	HL-(6FT RUNS)-RGBW-HO-CA-ELV-120-3W-IP66 POWER SUPPLY: PS-INF-3000 POWER-DATA CONVERTER: PDC-INF	LED RGBW	36	-	REMOTE POWER SUPPLY AND DMX CONTROLLER	12-60V 120V	WALL MOUNT	68		1,2,4
Q1	RECESSED WALL MOUNTED LED WET-RATED LUMINAIRE, NOMINAL 12-1/2" LONG X 5" WIDE X 2-3/4" TALL, DIE-CAST ALUMINUM HOUSING, CLEAR SAFETY GLASS, POLYESTER POWDER COAT FINISH, INTEGRAL 0-10V DIMMING DRIVER, 480 DELIVERED LUMENS.	BEGA	33053+K3-BLK	LED 3000K	11	-	ELECTRONIC 0-10V DIMMING DRIVER	UNV	RECESSED WALL MOUNT - APPROX. 1.5FT AFF	36		4
S1	LED FLOOD LUMINAIRE, 7" LONG, 2-1/4" DIAMETER, MEDIUM 23° DISTRIBUTION, ALUMINUM HOUSING, SOFT FOCUS LENS, HONEYCOMB BAFFLE, KNUCKLE MOUNTING SYSTEM, INTEGRAL 0-10V DIMMING DRIVER WITH REMOTE TRANSFORMER, ADJUSTABLE POWER PIPE ACCESSORY, 406 DELIVERED...	BK LIGHTING	DS-LED-E65-MFL-A9-(FINISH)-12-11-A-360SL ACCESSORY: PP-J18-TRE20-(FINISH)-B-SF	LED 3000K	7	1	ELECTRONIC 0-10V DIMMING DRIVER WITH REMOTE XFMR	UNV	STAKE MOUNTED	72		2,4
S2	LED FLOOD LUMINAIRE, 10" LONG, 3" DIAMETER, SPOT 20° DISTRIBUTION, ALUMINUM HOUSING, HONEYCOMB BAFFLE, KNUCKLE MOUNTING SYSTEM, INTEGRAL 0-10V DIMMING DRIVER, POWER PIPE ACCESSORY, 1508 DELIVERED LUMENS.	BK LIGHTING	DE-LED-TR-X123-SP-(FINISH)-12-11-A-ELV-120 ACCESSORY: PP-J18-(FINISH)-B-SF	LED 3000K	21	1	ELECTRONIC LOW VOLTAGE DIMMING DRIVER	UNV	STAKE MOUNTED	3		2,4
V1	LED WET-RATED BOLLARD, NOMINAL 7-15/16" DIA. X 3.5' TALL, DIE-CAST LOW-COPPER AND LOW-IRON ALUMINUM HOUSING, VANDAL AND UV RESISTANT ACRYLIC OPTIC, POLYESTER POWDER COAT FINISH, INTEGRAL 0-10V DIMMING DRIVER, 854 DELIVERED LUMENS. B0-U0-G0	SELUX	IBL-3.5-2Q90MU-30-(FINISH)-UNV-DM	LED 3000K	14.1	1	ELECTRONIC 0-10V DIMMING DRIVER	UNV	BOLLARD	12		8
V1A	LED WET-RATED BOLLARD, NOMINAL 7-15/16" DIA. X 3.5' TALL, DIE-CAST LOW-COPPER AND LOW-IRON ALUMINUM HOUSING, VANDAL AND UV RESISTANT ACRYLIC OPTIC, POLYESTER POWDER COAT FINISH, INTEGRAL 0-10V DIMMING DRIVER, 2101 DELIVERED LUMENS. B0-U0-G0	SELUX	IBL-3.5-4QS-30-(FINISH)-UNV-DM	LED 3000K	27.2	1	ELECTRONIC 0-10V DIMMING DRIVER	UNV	BOLLARD	9		8

GENERAL NOTES:

- LUMINAIRE FINISHES SHALL BE SELECTED BY THE ARCHITECT.
- ELECTRICAL CONTRACTOR SHALL LOCATE REMOTE POWER SUPPLIES IN FIELD WITH ARCHITECT, USE AS FEW POWER SUPPLIES AS POSSIBLE.
- REMOTE POWER SUPPLIES SHALL BE LOCATED IN NEARBY, ACCESSIBLE, DRY, VENTILATED LOCATION, MINIMIZE DISTANCE, AND PROVIDE WIRE SIZE AS REQUIRE BY MANUFACTURER REQUIREMENTS.
- SUBSTITUTIONS OF EQUAL ITEMS MUST BE APPROVED BY PLANNING BOARD STAFF. SUBSTITUTIONS ARE AUTHORIZED IF A MORE ENERGY EFFICIENT MODEL BECOMES AVAILABLE.
- ELECTRICAL CONTRACTOR IS RESPONSIBLE FOR PROVIDING ALL NECESSARY JOINERS, HANGERS, TRANSFORMERS, AND OTHER ACCESSORIES FOR A COMPLETELY FUNCTIONING SYSTEM.

CONSULTANTS

CIVIL SITE ENGINEERS:

Jill
200 North Frederick Avenue, Suite 100
Crownsville, Maryland 21032
Phone: 410-583-6366

LAND PLANNERS & LANDSCAPE ARCHITECTS:

MAK
462 South Lusk Alley
Columbia, MD 21046
Phone: 410-621-2766

STRUCTURAL ENGINEERS:

STRUCAL
810 Light Street
Baltimore, MD 21230
Phone: 410-753-1898

MER ENGINEERS:

JENNER ENGINEERING, INC
8810 Baker Road
Northham, MD 21288
Phone: 410-670-1300

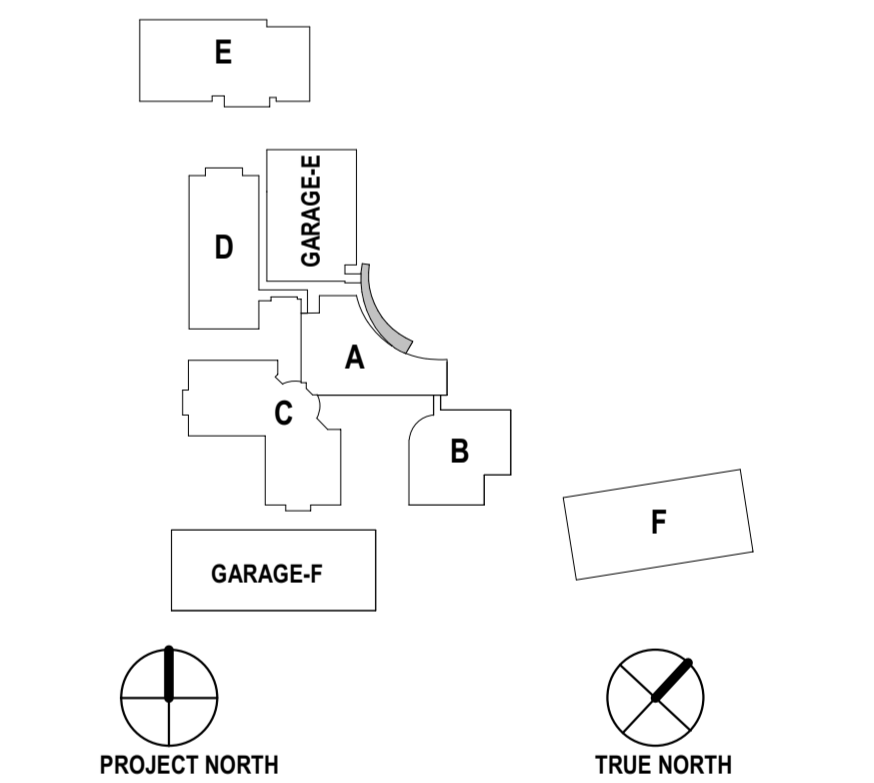
DEVELOPER'S CERTIFICATE

The undersigned agrees to execute all the features of the Site Plan Approval No. #1995045H, including Approval Conditions, Development Program, and Certified Site Plan.

Developer's Name: ARI-Maryland No. 24, LLC
Contact Person: Ari Hoffman
Address: 945 Copper Road, Gaithersburg, MD 20878
Phone: 301-947-1770

Signature:
Authorized Signatory

KEY PLAN



PRINCIPAL

PROJECT MANAGER

William A. Gaudreau

Professional Certification: I certify that these documents were prepared or approved by me, and that I am a duly Licensed Professional Engineer under the laws of the State of Maryland.
Date: 2023.01.11 10:56:31 -0500

REVISIONS

NO.	BY	DESCRIPTION	DATE
			1/5/23

ALEXANDRIA
9800 MEDICAL CENTER DRIVE COMPLEX
BUILDING A, E, & PARKING DECK
ROCKVILLE, MD 20850

DRAWN BY: JB DATE: Issue Date

PROJECT NO. 20220345 SCALE

DRAWING NAME

ELECTRICAL GENERAL NOTES

FLOOR/SECTION PHASE DRAWING NO.

CERTIFIED SITE PLAN
#81995045H **EG.1**