



PLANNING DEPARTMENT USE ONLY (E-PLANS)

GENERAL NOTES

A. BASE INFORMATION

- 1. THE BASE MAPPING / SURVEY WAS PREPARED BY SOLTESZ, 2 RESEARCH PLACE, SUITE 100, ROCKVILLE, MD, 20850. 301-948-2750. FIELD VERIFY EXISTING CONDITIONS AND REPORT ANY DISCREPANCIES TO THE OWNER'S REPRESENTATIVE PRIOR TO COMMENCING WORK.

B. GENERAL REQUIREMENTS

- 1. UNLESS OTHERWISE NOTED FOR THE PROJECT'S SITE DEVELOPMENT AND SPECIFICATIONS DOCUMENTS, THE LANDSCAPE ARCHITECT, AKA MKSK, SHALL BE THE OWNER'S REPRESENTATIVE.

C. PROTECTION

- 1. CAREFULLY PRESERVE BENCHMARKS, PROPERTY CORNERS, REFERENCE POINTS, HUBS, STAKES AND OTHER SURVEY REFERENCE MONUMENTS OR MARKERS. IF ANY PINS OR MONUMENTS ARE DISTURBED, DAMAGED, OR DESTROYED BY THE CONTRACTOR, THEY SHALL BE ACCURATELY REPLACED BY A REGISTERED PROFESSIONAL SURVEYOR AT THE COMPLETION OF THE PROJECT AND AT THE CONTRACTOR'S EXPENSE.

D. PUBLIC SAFETY

- 1. DO NOT CLOSE OR OBSTRUCT STREETS, WALKS, OR OTHER OCCUPIED OR USED FACILITIES WITHOUT PERMISSION FROM THE CITY AND AUTHORITIES HAVING JURISDICTION. FOLLOW MAINTENANCE OF TRAFFIC PLANS.

GENERAL NOTES

E. EROSION CONTROL

- 1. PROVIDE TEMPORARY AND PERMANENT EROSION AND SEDIMENT CONTROL ITEMS AS REQUIRED BY GOVERNING AGENCY, AS REQUIRED BY PERMIT, AS INDICATED ON THE PLANS, AND AS NOTED IN THE SPECIFICATIONS. INSTALL TEMPORARY EROSION AND SEDIMENT CONTROL ITEMS PRIOR TO CLEARING AND COMMENCING EARTHWORK.

F. SITE CLEANING

- 1. PROVIDE APPROPRIATE CONTROL MEASURES DURING CONSTRUCTION TO PREVENT AIRBORNE DUST TO ADJACENT CITY PROPERTIES AND WALKWAYS.

PROJECT SPECIFIC NOTES

- 1. CONTACT THE CITY ENGINEER'S OFFICE 24 HOURS PRIOR TO ANY WORK BRING PERFORMED IN THE CONSTRUCTION SITE IN ORDER TO PROVIDE FOR INSPECTION. NO CONCRETE INSTALLATION IS TO BE PERFORMED WITHIN THE CONSTRUCTION SITE UNLESS AN INSPECTOR CONFIRMS THAT THE CONDITIONS AND REQUIREMENTS OF THESE SPECIFICATIONS.

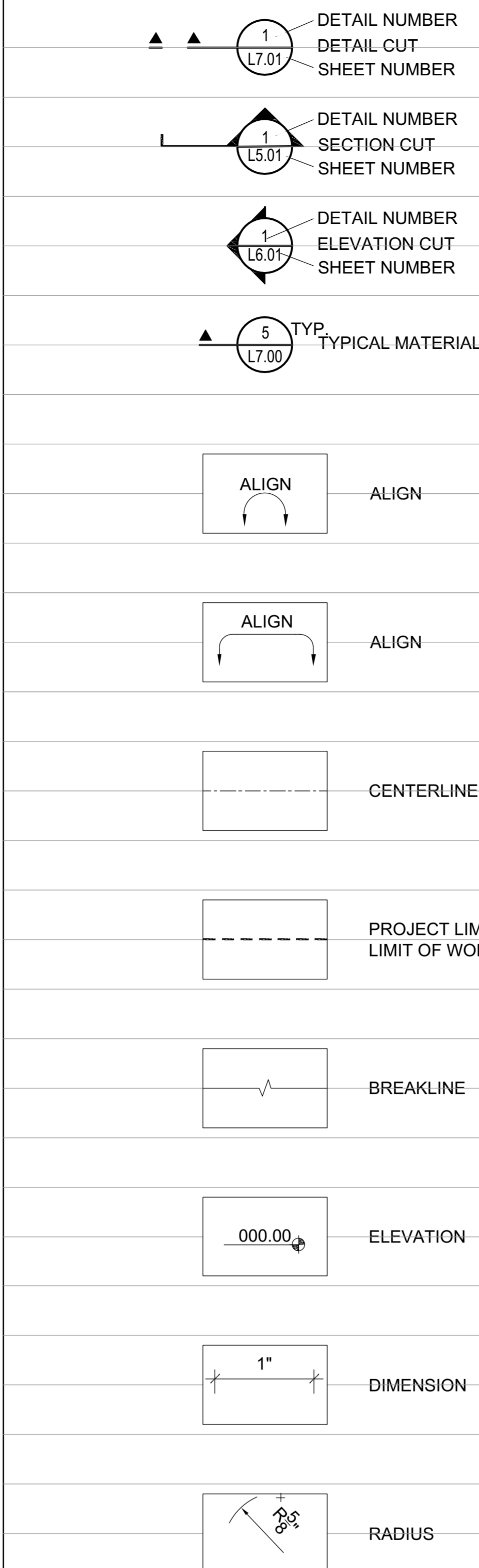
Sheet List Table

Table with 2 columns: Sheet Number, Sheet Title. Lists sheets L.0.1 through L.7.7 including materials legend, overall site plan, layout plans, materials plans, site sections, and details.

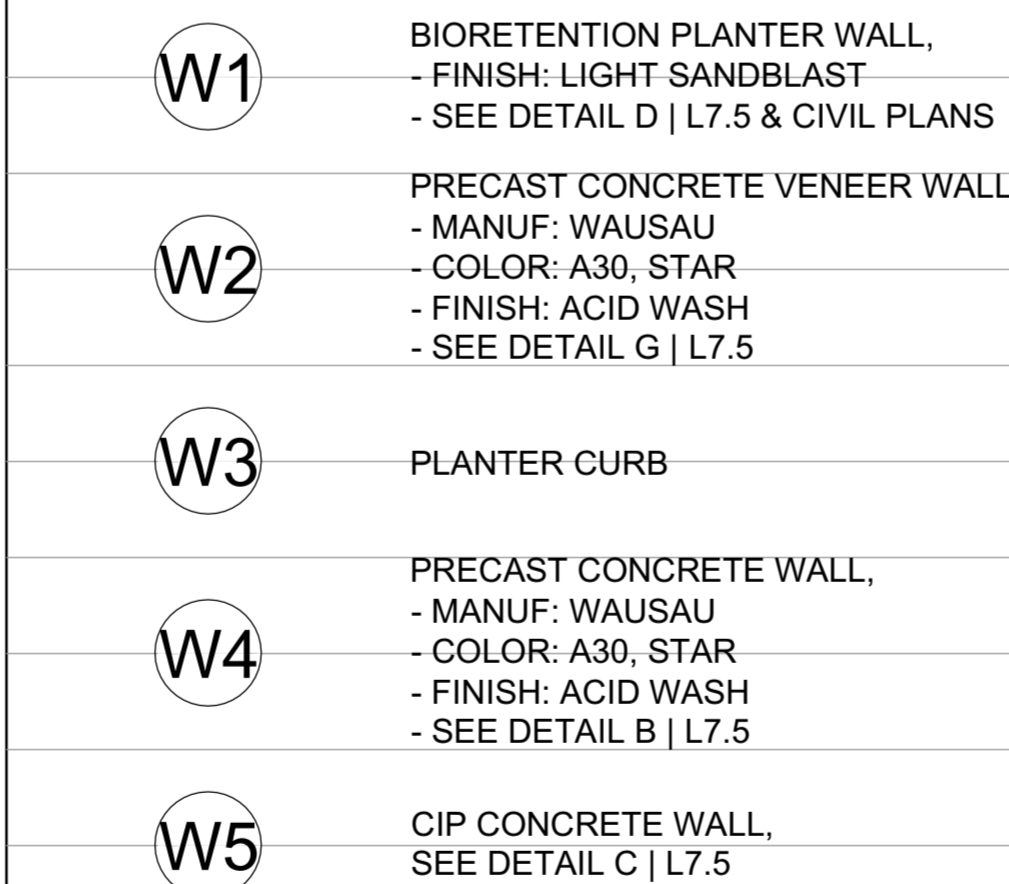
ABBREVIATIONS

Table of abbreviations for construction terms such as ANCHOR BOLT, AMERICANS WITH DISABILITIES ACT, ADDENDUM, ADJACENT, AGGREGATE, ALIGN, ALTERNATE, ALUMINUM, APPROXIMATE, ARCHITECT, AUTOMATIC, ALIGN WITH CENTER, BALLED AND BURLAPPED, BACK OF CURB, BELOW, BETWEEN, BITUMINOUS, BUILDING, BOTTOM, BRICK, BOTH SIDES, BOTTOM OF CURB, BOTTOM OF FOOTING, BOTTOM OF STEPS, BOTTOM OF WALL, BEYOND, CALIPER, CATCH BASIN, CAST IN PLACE, CENTER JOINT, CONCRETE, MASONRY UNIT, CLEANOUT, COLUMN, CONCRETE, CONTINUOUS, CLEAR TRUNK, CENTER, DIAMETER AT BREAST HEIGHT, DEMOLISH, DIA, DIMENSION, DETAIL, DRAWING, EACH, EXPANSION JOINT, ELEVATION, ELECTRICAL, ENCLOSURE, ENGINEER, EDGE OF PAVEMENT, EQUAL, EQUIPMENT, EACH WAY EXISTING, EXTERIOR, FACE OF BUILDING, FACE OF CURB, FINISH FLOOR, FINISH GRADE, FINISH, FACE OF WALL, FOOT, FEET, FULL TO GROUND, GAUGE, GALLON, GALVANIZED, GRATE ELEVATION, HOSE BIB, HANDICAPPED, HORIZONTAL, HIGH POINT, HEIGHT, INSIDE DIAMETER, INLET DRAIN, INCH, INCHES, INCLUDED, INVERT, JUNCTION BOX, LOW POINT, LIGHT FIXTURE, MANUFACTURER, MAXIMUM, MECHANICAL, MEDIUM, MANHOLE, MINIMUM, MISCELLANEOUS, MULTI-STEM, NOT IN CONTRACT, NOMINAL, NOT TO SCALE, OVERALL, ON CENTER, OUTSIDE DIAMETER, PRECAST CONCRETE, PERFORATED, PERPENDICULAR, POURED IN PLACE, PLANTING AREA, PLUMBING, POINT OF BEGINNING, PEAT POTS, PLANTS PER POT, PROPOSED, PRESERVATIVE, PREPARED, POINT, PRESSURE TREATED PINE, POTABLE WATER, PAVEMENT, QUICK COUPLER, QUANTITY, RADIUS, ROUND, REINFORCED, REMOVE, REQUIRED, REVISION, RIM, RIM ELEVATION, SCHEDULE, SECTION, SHEET, SIMILAR, SEALANT, SPECIFICATION, SPREAD, STAINLESS STEEL, SINGLE TRUNK, STANDARD, STRUCTURAL, SQUARE, TO BE DETERMINED, TOP OF CURB, TOP OF COLUMN, TEMPERATURE, TOP OF FOOTING, TOP OF STAIRS, TOP OF WALL, TYPICAL, UNDER CUT, UNLESS NOTED OTHERWISE, VERTICAL, VERIFY IN FIELD, WITH, WITHOUT, WATER LEVEL, AVERAGE, WATER LEVEL STATIONARY, WIRE MESH, WATERPROOFING, WASTE, WELDED WIRE FABRIC.

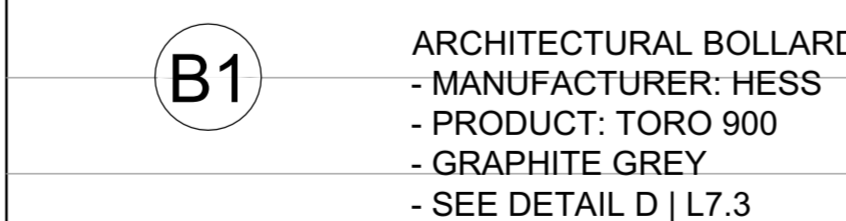
GENERAL ALL SHEETS



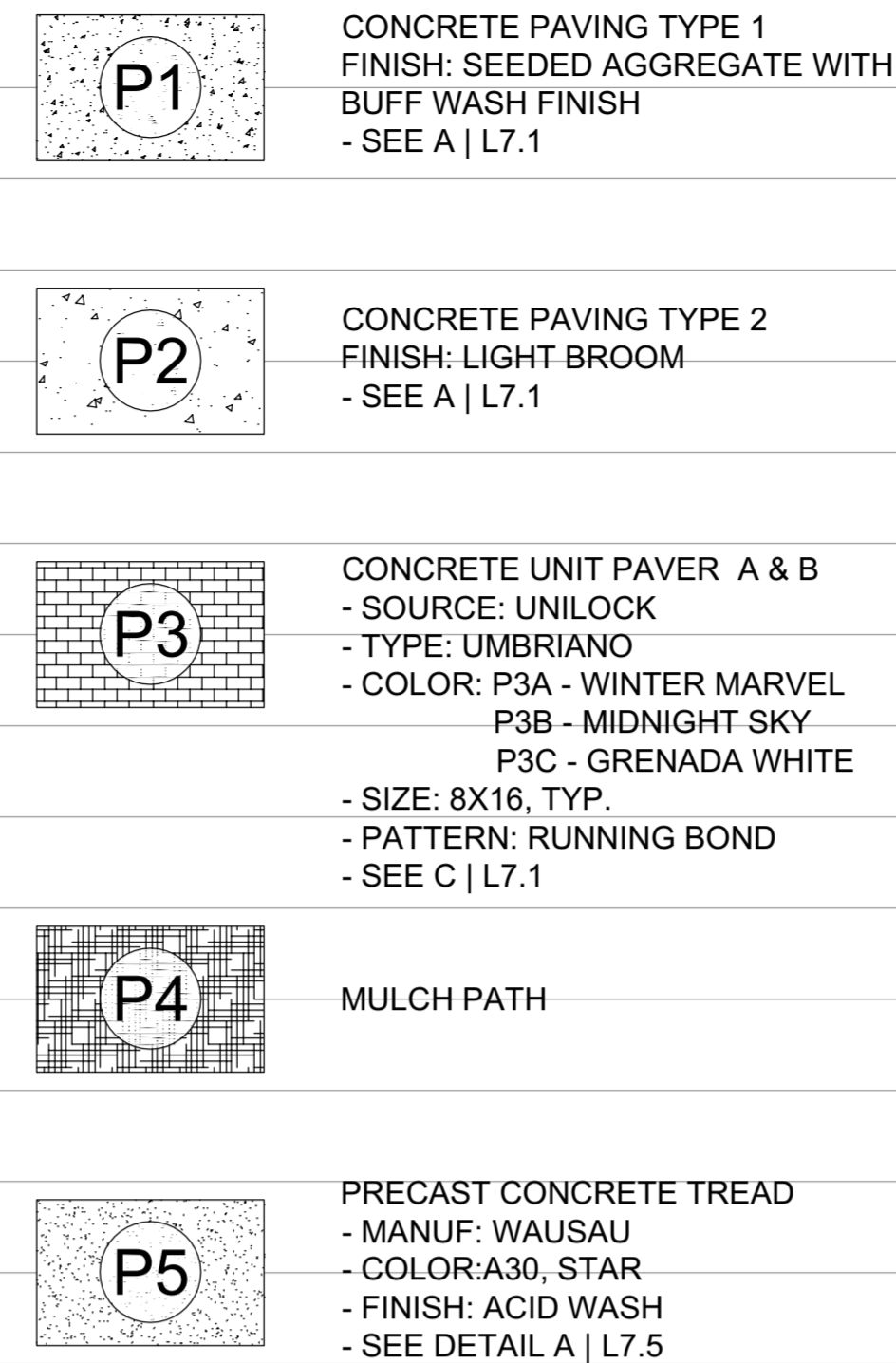
WALL TYPES



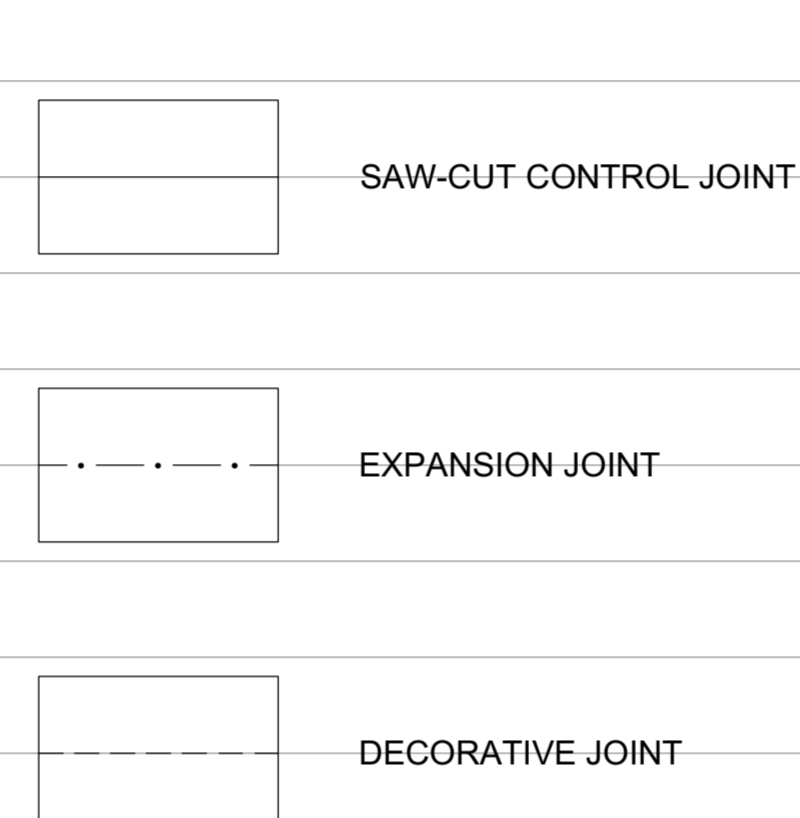
BOLLARD TYPES



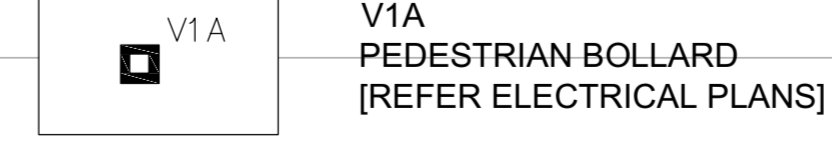
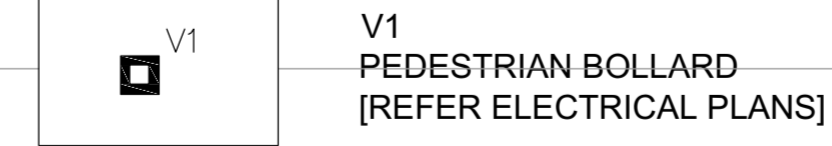
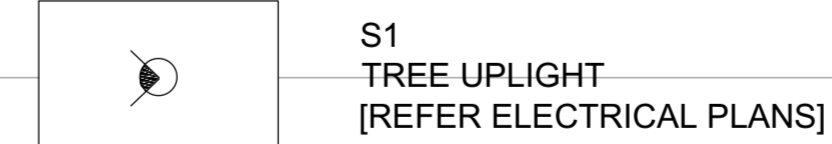
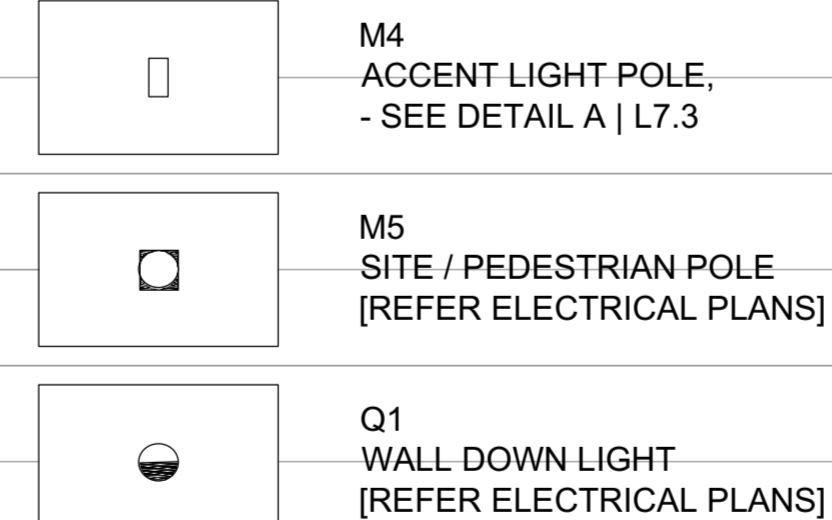
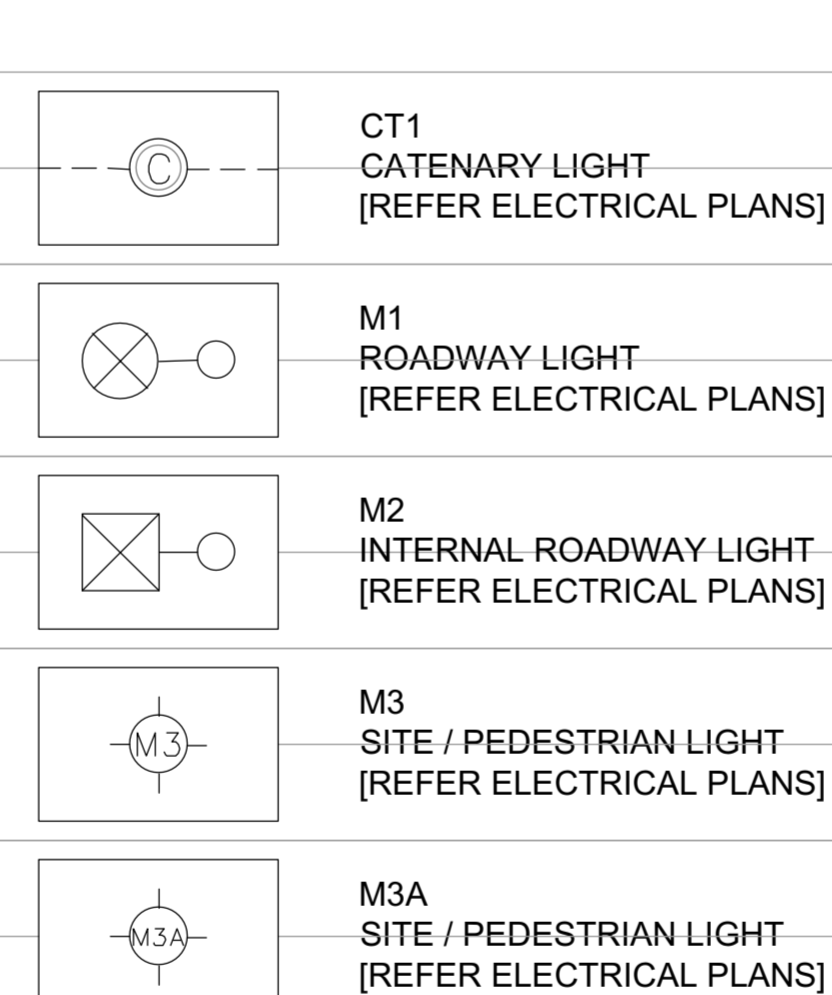
MATERIALS PLAN



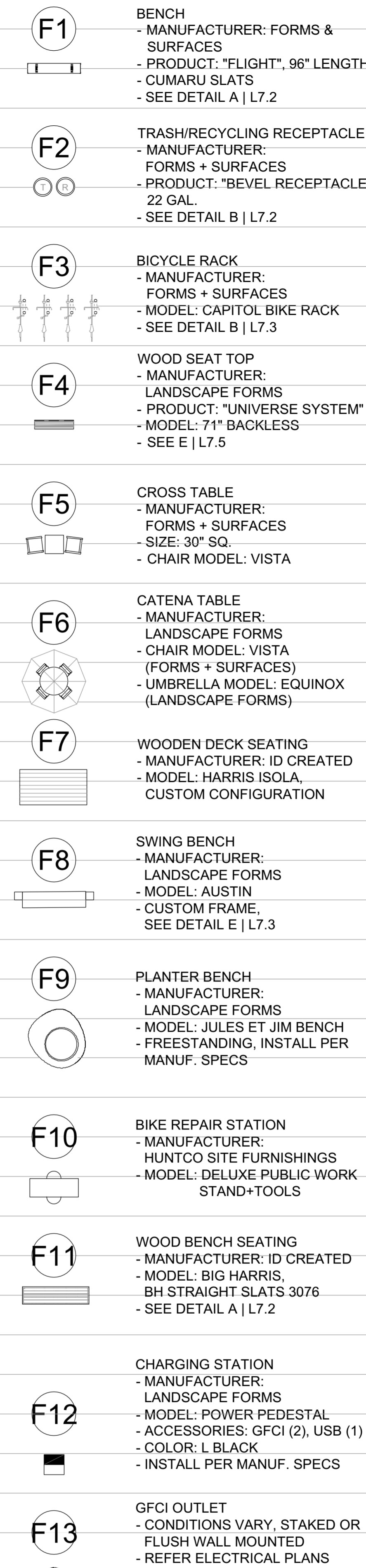
JOINTING PLAN



LIGHTING SCHEDULE



SITE FURNISHINGS



CERTIFIED SITE PLAN 81995045G

DEVELOPER'S CERTIFICATE

The Undersigned agrees to execute all the features of the Site Plan Approval No. 81995045G, including Approval Conditions, Development Program and Certified Site Plan.

Developer's Name: ARE-Maryland No.24, LLC, William DePippo Company Contact Person

Address: 946 Clopper Road, Gaithersburg, MD 20878

Phone: 301-947-1770

Signature: William DePippo



810 Light Street Baltimore, MD 21230-3970 Tel: 410-837-5040 Fax: 410-234-8010

CONSULTANTS

CONSULTANTS CIVIL SITE ENGINEERS 501 TEC CHANDLER RD 21086 Pikesville, MD 21076 Phone: 410-228-9000 Fax: 410-228-9001

LAND PLANNERS & LANDSCAPE ARCHITECTS: W&P 45 East Lister Alley Columbia, MD 21046 Phone: 410-671-2700

STRUCTURAL ENGINEERS:

ASSET ENGINEERING 810 Light Street Baltimore, MD 21202 Phone: 410-511-1100

MESSEY ENGINEERS:

GENEVA ENGINEERING, INC 6811 Old Road Baltimore, MD 21208 Phone: 410-671-1200

SUSTAINABILITY CONSULTANTS:

LOUIS PARTNERSHIPS, LLC 1001 Park Drive Baltimore, MD 21201 Phone: 410-671-1200

KEY PLAN

PRINCIPAL

ANDY KNIGHT, PLA PROJECT MANAGER RICK ESPE, PLA

Professional Certification: I certify that these documents were prepared or approved by me, and that I am a duly licensed landscape architect under the laws of the State of Maryland. License No: 01-14189 Expiration Date: 01/26/23



REVISIONS

NO. BY DESCRIPTION DATE

ALEXANDRIA ALEXANDRIA REAL ESTATE EQUITIES, INC

9808 MEDICAL CENTER DRIVE BUILDING E & PARKING DECK

ROCKVILLE, MD 20850

DRAWN BY DB DATE 02-19-2021

PROJECT NO. SCALE

DRAWING NAME

MATERIALS LEGEND & NOTES

FLOOR/SECTION/PHASE

DRAWING NO. CD

L0.1