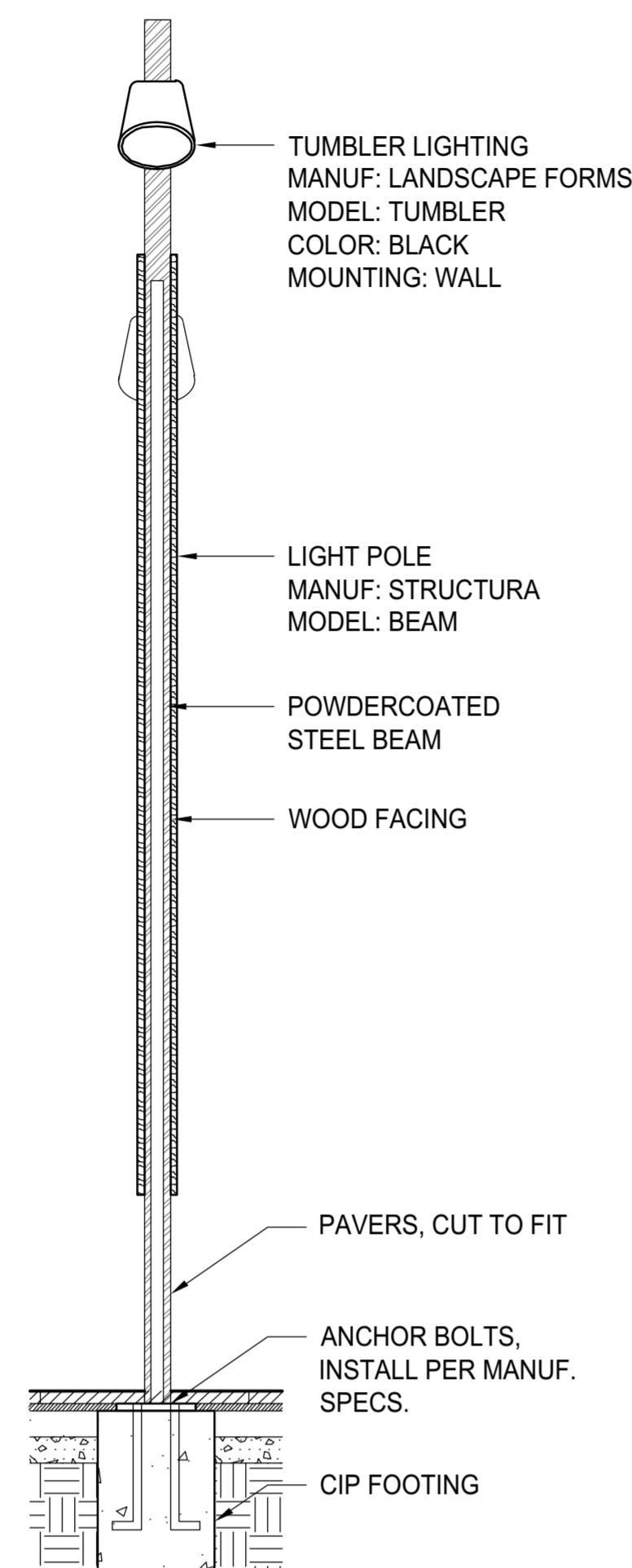
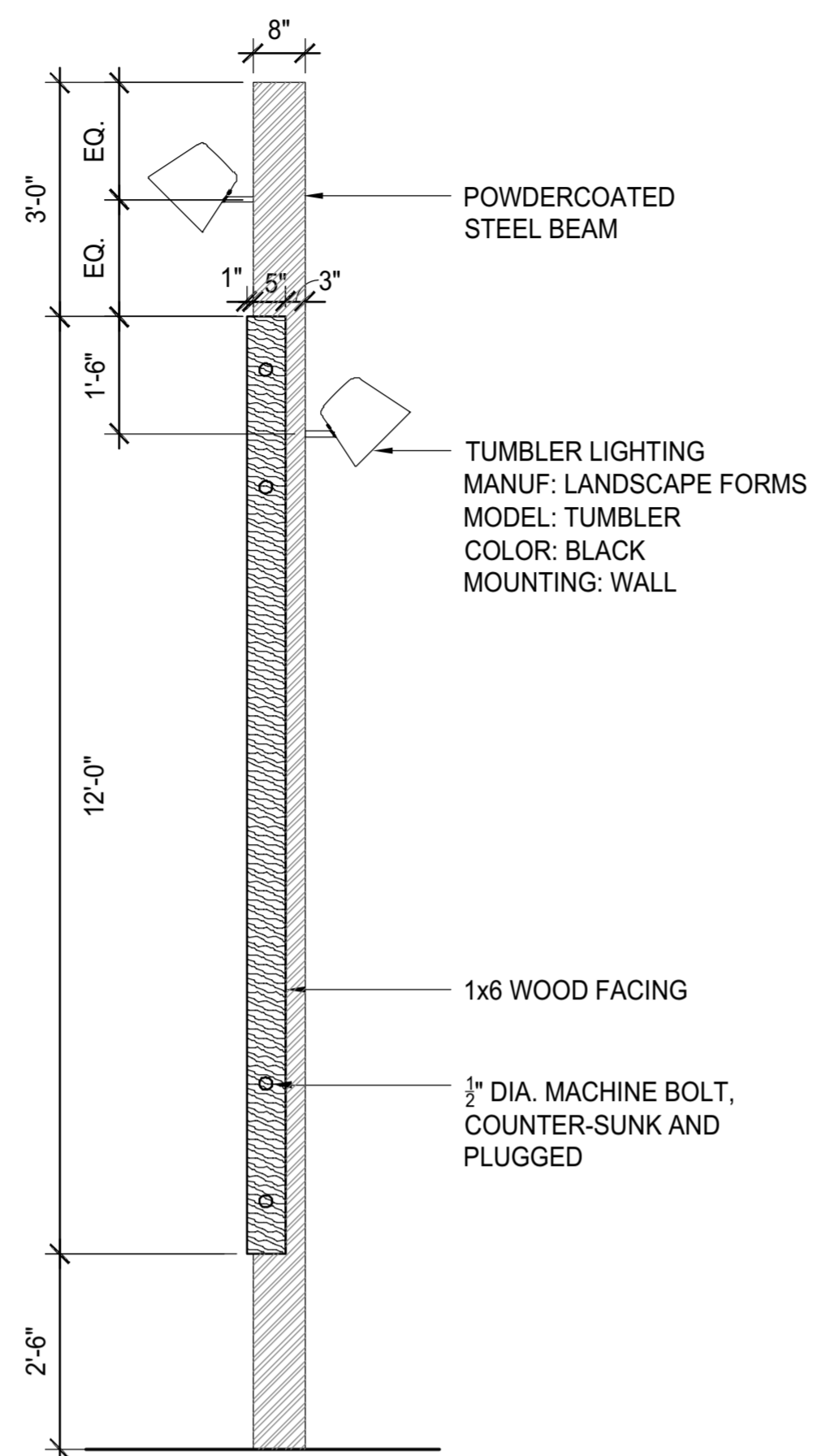


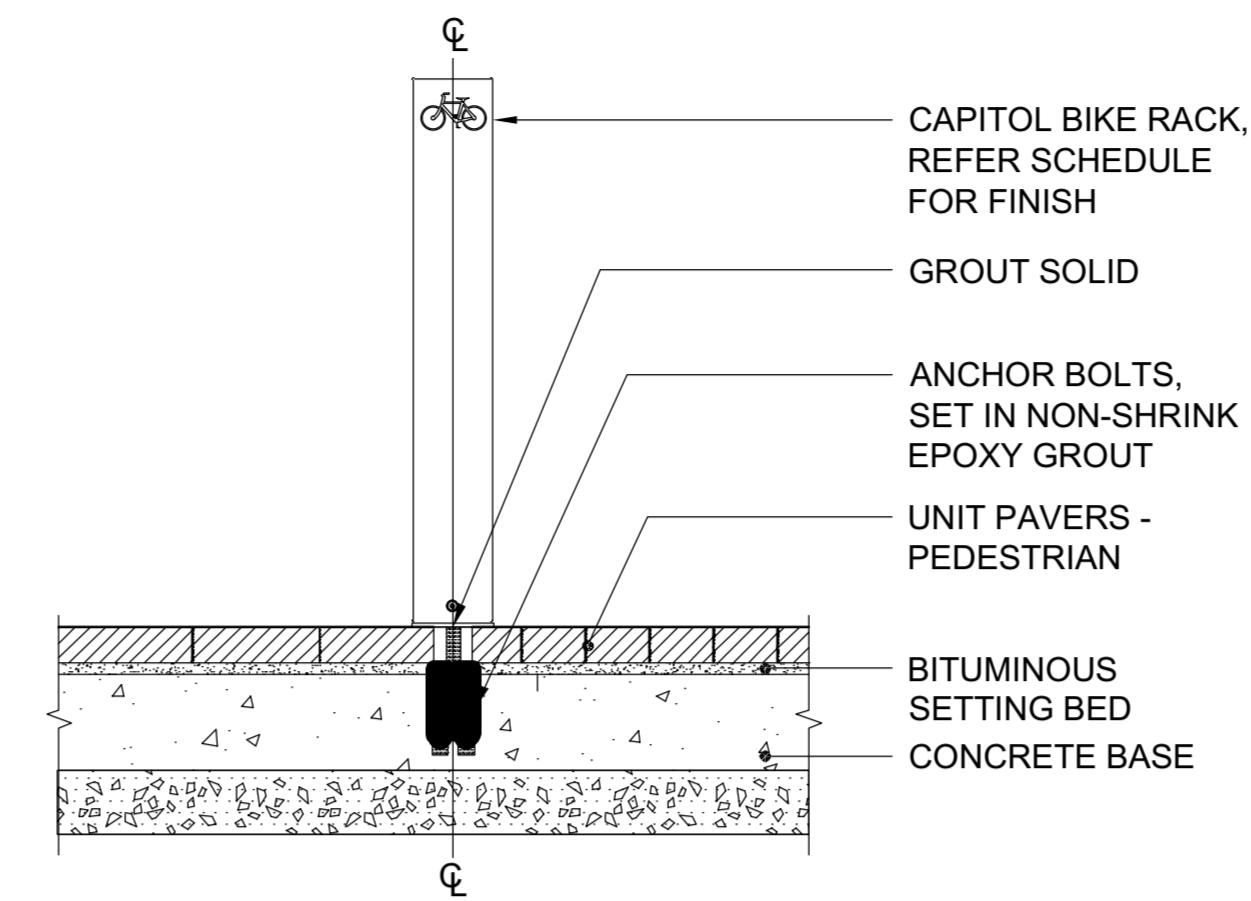
PLANNING DEPARTMENT USE ONLY (E-PLANS)



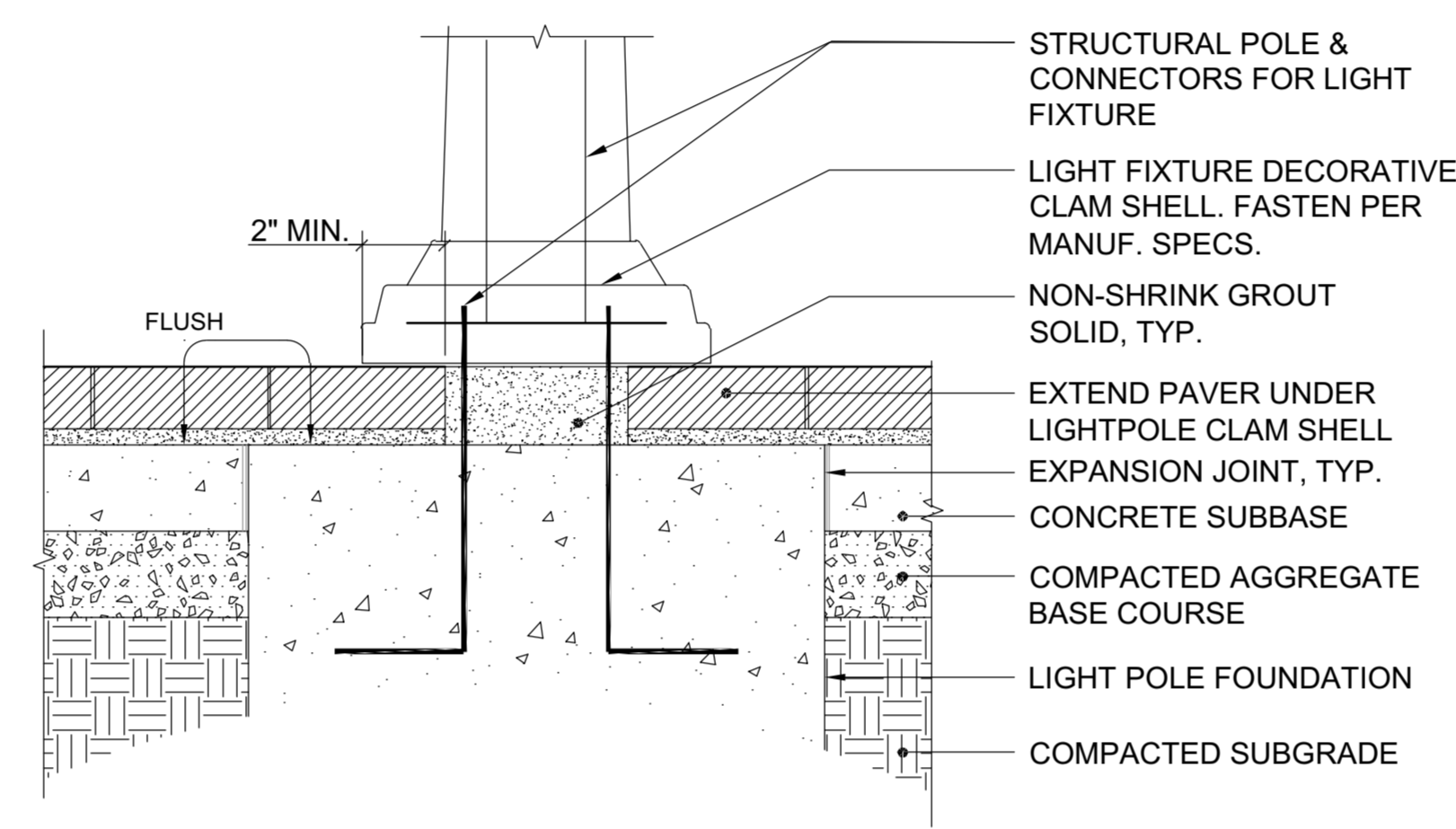
**A ACCENT LIGHT POLE**  
 0 1' 2' 4'



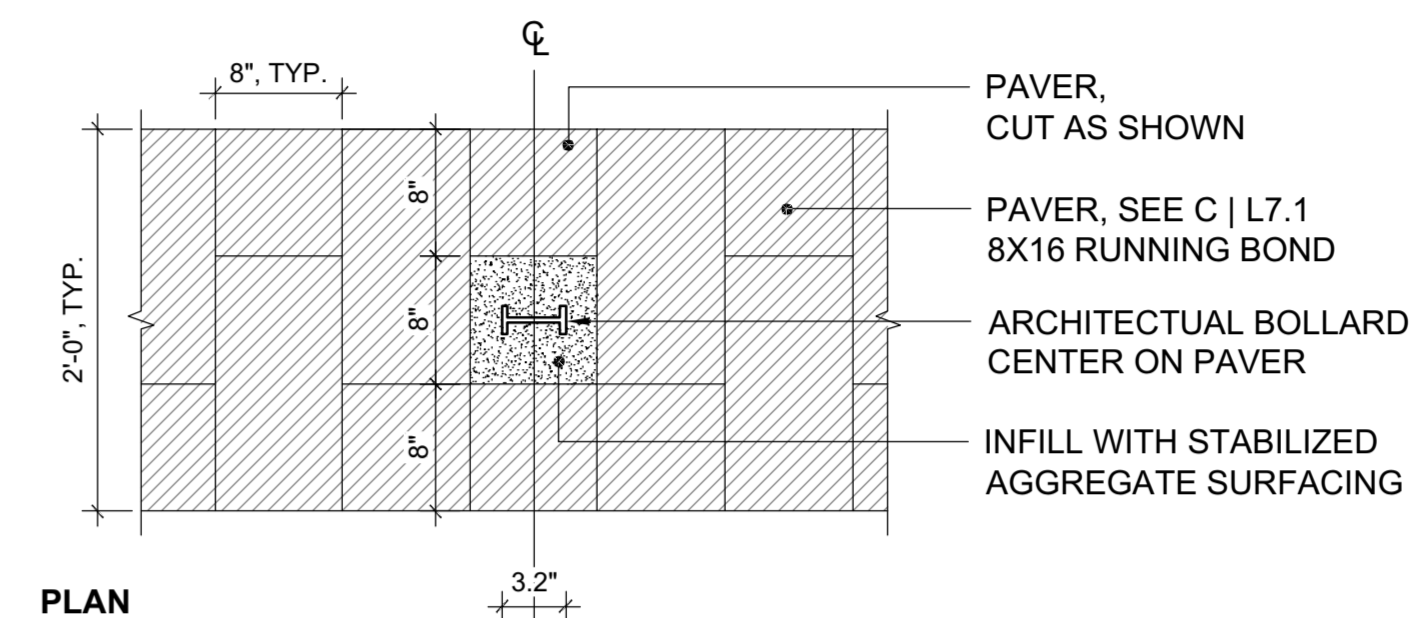
**B BIKE RACK IN PAVERS**  
 0 1' 2'



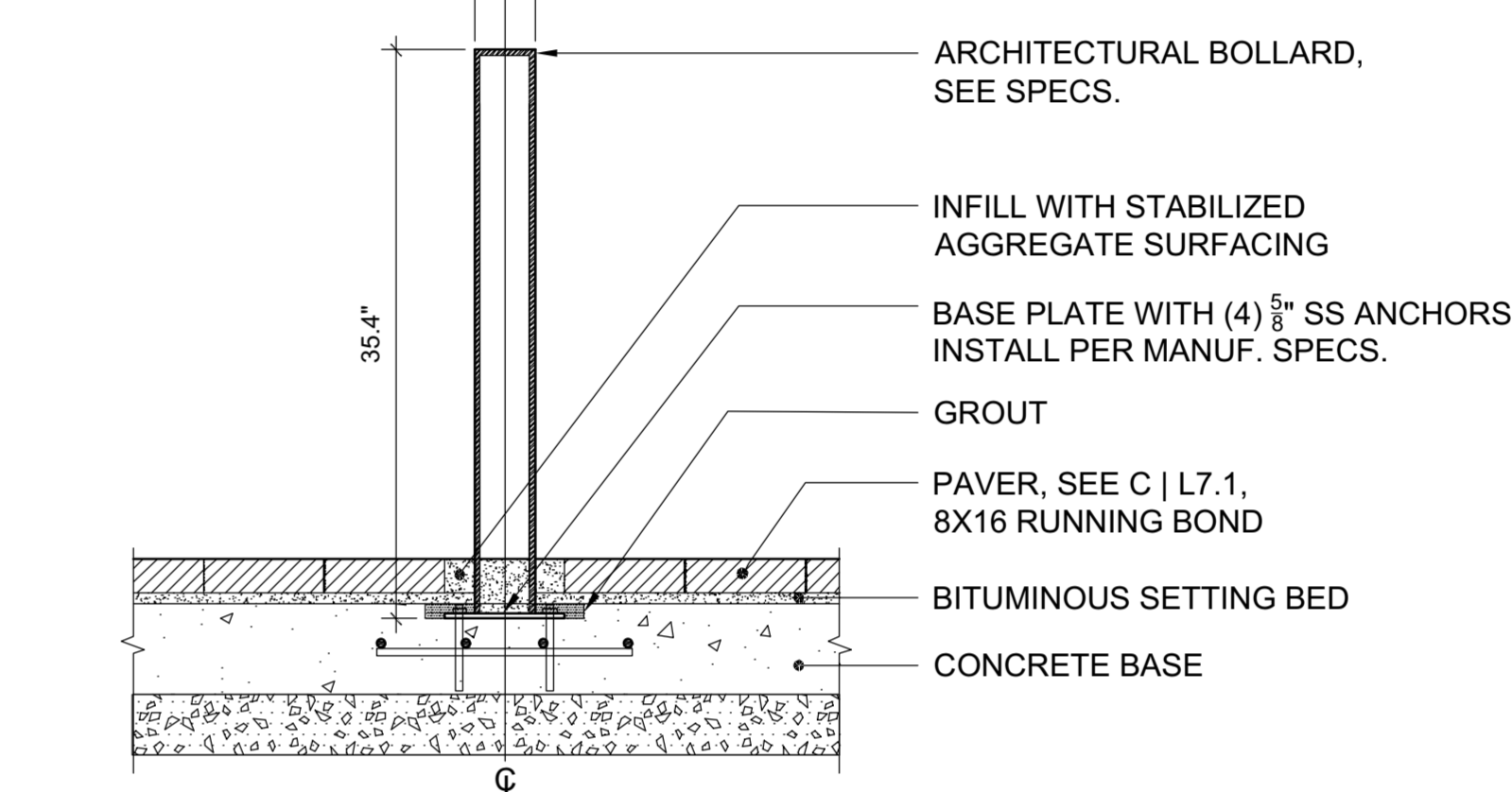
TYPICAL SECTION



**C LIGHT POLE FOUNDATION**  
 0 1' 4' 8' 1' 4'

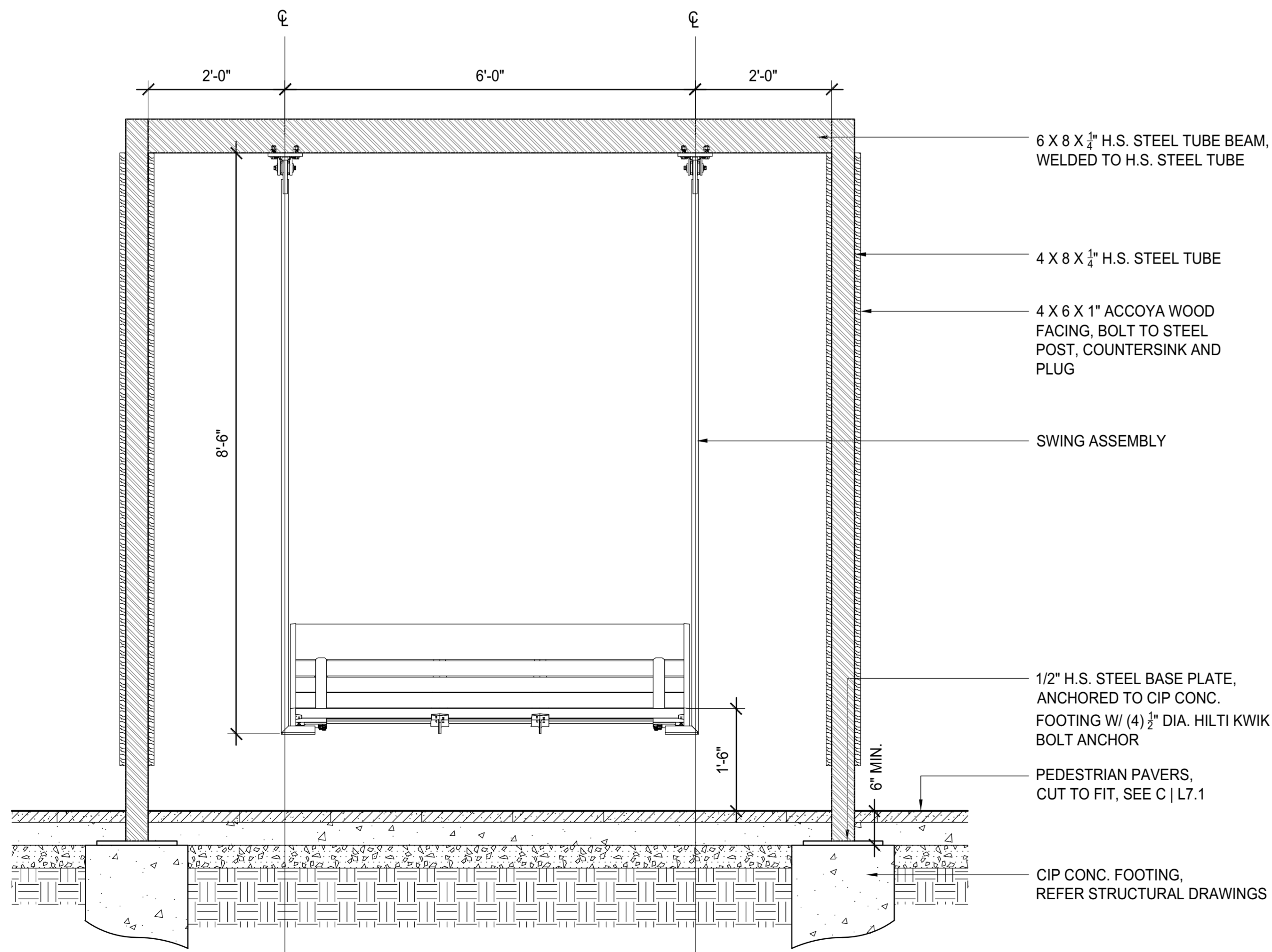


PLAN

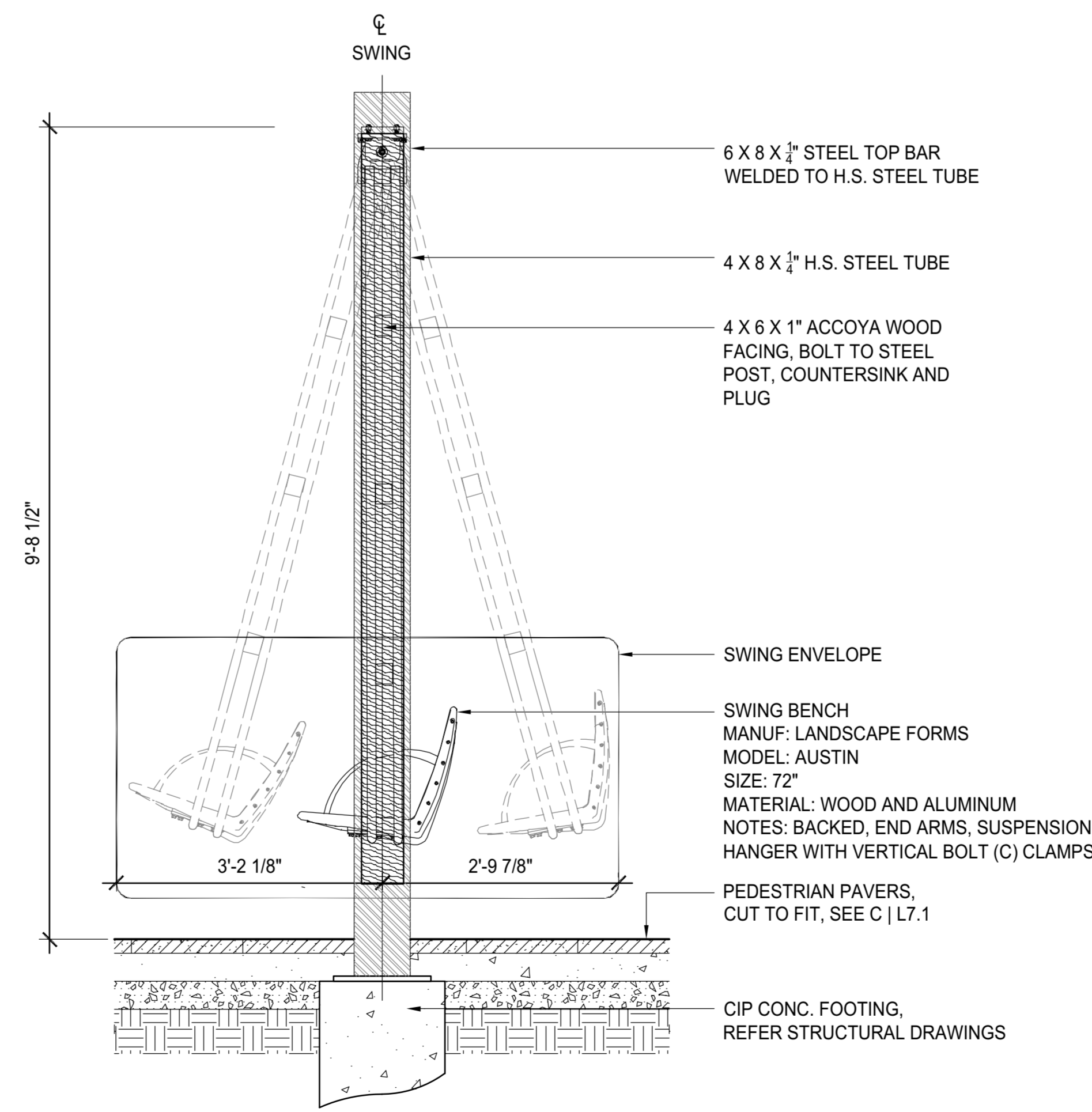


SECTION

**D BOLLARD IN PAVERS**  
 0 1' 2'



**1 ELEVATION - FRONT**  
 0 1' 8" 1' 4" 2'-8"



**2 ELEVATION - SIDE**  
 0 1' 8" 1' 4" 2'-8"

**E SWING**  
 0 1' 8" 1' 4" 2'-8"

- NOTES:
- ALL STEEL TO BE PRIMED WITH A TWO-COMPONENT, RUST INHIBITIVE CATALYZED EPOXY STEEL PRIMER. TWO COATS SHALL BE APPLIED IN SHOP PRIOR TO SHIPPING. FIELD PAINT/TOUCH-UP ANY DEFECTS CAUSED DURING INSTALLATION OR THROUGH FIELD WELDS, TO ACHIEVE 100% PRIME COAT. APPLY TWO COATS OF EXTERIOR METAL PROTECTIVE TOPCOAT TO STEEL CONSTRUCTION. COLOR: TBD
  - CONTRACTOR TO PROVIDE ENGINEER STAMPED SHOP DRAWINGS FOR REVIEW + APPROVAL BY LANDSCAPE ARCHITECT PRIOR TO STARTING FABRICATION.
  - STRUCTURAL DRAWINGS SHALL ACCOUNT FOR LOAD REQUIREMENTS FOR C-TYPE BRACKET MOUNT WHERE SWING IS ATTACHED TO STRUCTURE.
  - IT IS THE RESPONSIBILITY OF THE CONTRACTOR TO DESIGN THE SWING SUPPORT SYSTEM STRUCTURE PER THE NOMINAL LOADS SHOWN ON THE STRUCTURAL ENGINEERING DWG: AUS99-06099-A BY LANDSCAPE FORMS
  - BENCH SEATING CAPACITY: 900 LBS (MAX LIVE LOAD)
  - BENCH AND SWING ARM WEIGHT: 300 LBS
  - AUSTIN SWING BENCH SUSPENSION KIT (AUSPECA) SOLD SEPARATELY FROM SWING BENCH.

**CERTIFIED SITE PLAN 81995045G**

**DEVELOPER'S CERTIFICATE**

The Undersigned agrees to execute all the features of the Site Plan Approval No. 81995045G, including Approval Conditions, Development Program and Certified Site Plan.  
 Developer's Name: ARE-Maryland No.24, LLC. William DePippo  
 Company Contact Person

Address: 946 Clopper Road, Gaithersburg, MD 20878

Phone: 301-847-1770

Signature: *William DePippo*

CONSULTANTS  
 CIVIL SITE ENGINEERS  
 CONSULTANTS  
 LAND PLANNERS & LANDSCAPE ARCHITECTS  
 STRUCTURAL ENGINEERS  
 MECHANICAL ENGINEERS  
 ELECTRICAL ENGINEERS  
 SUSTAINABILITY CONSULTANTS

KEY PLAN

PRINCIPAL  
 ANDY KNIGHT, PLA  
 PROJECT MANAGER  
 RICK ESPE, PLA



REVISIONS

NO. BY DESCRIPTION DATE



**ALEXANDRIA**  
 ALEXANDRIA REAL ESTATE EQUITIES, INC  
 9808 MEDICAL CENTER DRIVE  
 BUILDING E & PARKING DECK

ROCKVILLE, MD 20850

DRAWN BY DB DATE 02-19-2021

PROJECT NO. SCALE

DRAWING NAME

DETAILS

FLOOR/SECTION/PHASE DRAWING NO.

CD L7.3