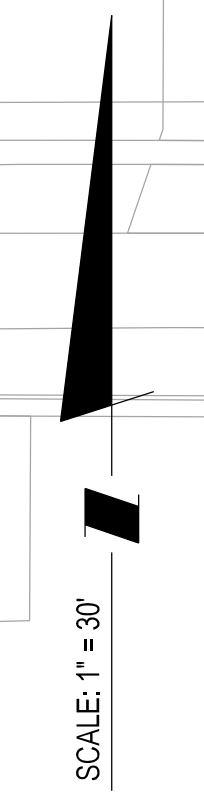
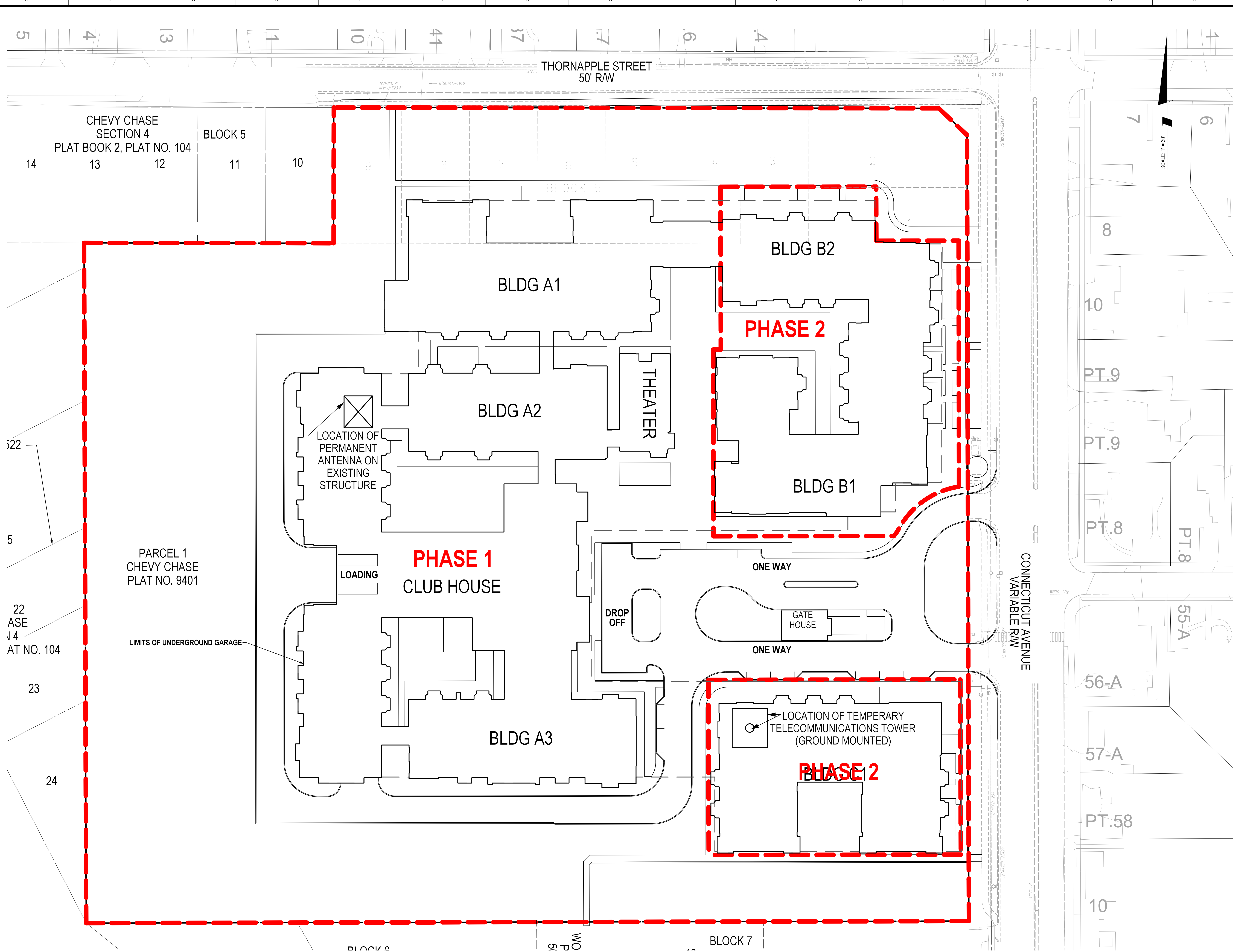


The original of this drawing document was prepared by Soltesz, Inc. (SOLTESZ). This document was not obtained directly from SOLTESZ, Inc. SOLTESZ cannot guarantee that unauthorized changes and/or alterations were not made by others. If verification of the information contained herein is needed, contact should be made directly with SOLTESZ. SOLTESZ makes no warranties, express or implied, concerning the accuracy of any information that has been transmitted by electronic means.



**SOLTESZ, INC.**  
 ROCKVILLE OFFICE  
 2 Research Place, Suite 100  
 Rockville, MD 20850  
 P. 301.948.2750 F. 301.948.9067  
 www.solteszco.com

Engineering  
 Surveying  
 Planning  
 Environmental Sciences

**MISS UTILITY NOTE**  
 INFORMATION CONCERNING EXISTING UNDERGROUND UTILITIES WAS OBTAINED FROM AVAILABLE RECORDS; THE CONTRACTOR MUST DETERMINE THE EXACT LOCATION AND ELEVATION OF ALL EXISTING UTILITIES AND UTILITY CROSSINGS BY EXCAVATION TEST PITS BY HAND, WELL IN ADVANCE OF THE START OF EXCAVATION. CONTACT MISS UTILITY AT 1-800-251-7777 48 HOURS PRIOR TO THE START OF EXCAVATION. IF CLEARANCES ARE LESS THAN SHOWN ON THE PLAN OR TWELVE (12) INCHES, WHOEVER IS LESS CONTACT THE ENGINEER AND THE UTILITY COMPANY BEFORE PROCEEDING WITH CONSTRUCTION. CLEARANCES LESS THAN NOTED MAY REQUIRE REVISION TO THE PLAN.

**OWNER / DEVELOPER / APPLICANT**  
 Corso DC, LLC  
 700 K Street, NW  
 STE 350  
 Washington, D.C. 20001  
 (202)232-3068 (T)  
 Contact: Grant Epstein

**PROFESSIONAL CERTIFICATION**  
 I HEREBY CERTIFY THAT THESE DOCUMENTS WERE PREPARED OR APPROVED BY ME AND THAT I AM A FULLY LICENSED PROFESSIONAL ENGINEER UNDER THE LAWS OF THE STATE OF MARYLAND.  
 LICENSE NO. \_\_\_\_\_ EXPIRATION DATE: \_\_\_\_\_

**PHASING EXHIBIT**

**CORSO CHEVY CHASE**

H-148

TAX MAP HM42.0000	ZONING CATEGORY: R-80
WSSC 200' SHEET 208NW04	
SITE DATING HORIZONTAL: <u>MAD 8/20/21</u> VERTICAL: <u>NOV/2021</u>	
DATE: 10/25/2022 DESIGNED: NC TECHNICIAN: NC CHECKED: KDL CAD STYL: V8 / NCS VERSION:	
SHEET <u>1</u> OF <u>1</u>	
PROJECT NO. 4180-01-01	

Note: Phasing lines are conceptual only and subject to adjustment.