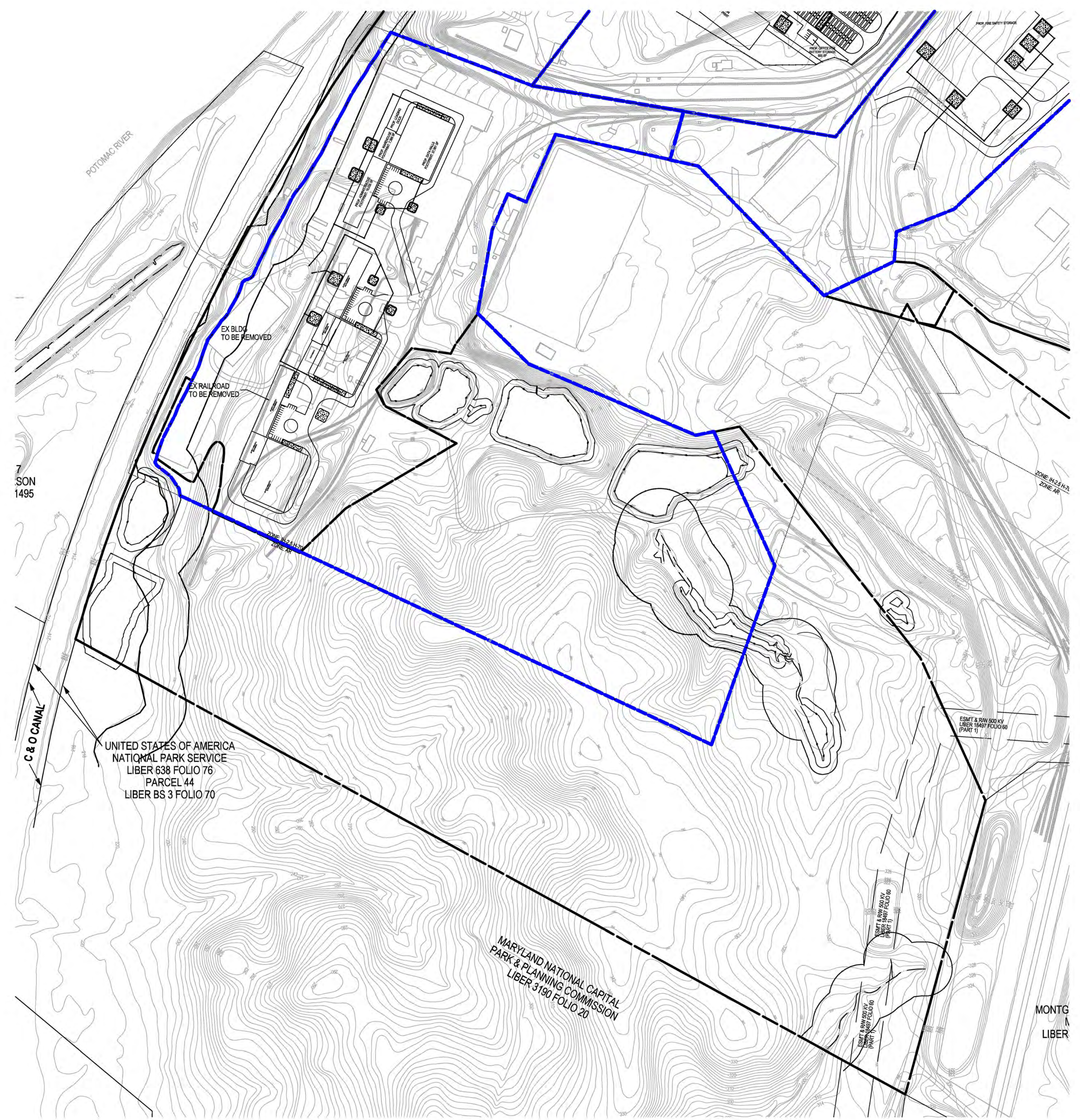


The right of this drawing document was prepared by Soltesz, Inc. (SOLTESZ). If this document was not obtained directly from SOLTESZ, Inc. it was transmitted electronically. SOLTESZ, Inc. makes no warranty, express or implied, concerning the accuracy of any information that has been transmitted by electronic means.

**LEGEND:**

- LOD --- LIMIT OF DISTURBANCE (LOD)
- --- LIMITS OF FOREST STAND
- PERENNIAL STREAM
- STREAM VALLEY BUFFER
- W --- WETLAND
- WB --- WETLAND BUFFER
- FP --- FLOODPLAIN
- ZONING LINE
- EASEMENT/RIGHT OF WAY
- PROPERTY BOUNDARY LINE
- TSF --- TREE SAVE FENCE
- RP --- ROOT PRUNE
- EX --- EX CONTOUR MINOR
- EX --- EX CONTOUR MAJOR
- PROPOSED STORMWATER MANAGEMENT
- PROPOSED BUILDING
- PROPOSED STORMDRAIN
- LAND BAY FOOTPRINT FOR DEVELOPMENT
- PROPOSED FENCE

LANDBAY 1 FOOTPRINT: 47.44 (AC.) TO 67.77 (AC)  
\*PLEASE NOTE THE LARGER OF THE FOOTPRINT IS SHOWN



**SOLTESZ, INC.**  
 ROCKVILLE OFFICE  
 2 Research Place, Suite 100  
 Rockville, MD 20850  
 P. 301.948.2750 F. 301.948.9067  
 www.solteszco.com

Engineering  
 Surveying  
 Planning  
 Environmental Sciences

NO.	REVISIONS	BY	DATE

**MISS UTILITY NOTE**  
 INFORMATION CONCERNING EXISTING UNDERGROUND UTILITIES WAS OBTAINED FROM AVAILABLE RECORDS; THE CONTRACTOR MUST DETERMINE THE EXACT LOCATION AND ELEVATION OF ALL EXISTING UTILITIES AND UTILITY CROSSINGS BY DIGGING TEST PITS BY HAND, WELL IN ADVANCE OF THE START OF EXCAVATION. CONTACT MISS UTILITY AT 1-800-251-7771 48 HOURS PRIOR TO THE START OF EXCAVATION. IF CLEARANCES ARE LESS THAN SHOWN ON THIS PLAN OR THREE (3) INCHES, WHICHEVER IS LESS, CONTACT THE ENGINEER AND THE UTILITY COMPANY BEFORE PROCEEDING WITH CONSTRUCTION. CLEARANCES LESS THAN NOTED MAY REQUIRE REVISIONS TO THIS PLAN.

**OWNER / DEVELOPER / APPLICANT**  
 TERRA INNOVATIONS  
 904 206-8770  
 JEFF@TERRAINNOVATIONS.COM  
 JEFF FERREL

**PROFESSIONAL CERTIFICATION**  
 I HEREBY CERTIFY THAT THESE DOCUMENTS WERE PREPARED OR APPROVED BY ME AND THAT I AM A DULY LICENSED PROFESSIONAL ENGINEER UNDER THE LAWS OF THE STATE OF MARYLAND.  
 LICENSE NO. \_\_\_\_\_ EXPIRATION DATE: \_\_\_\_\_

**LAND BAY 1 PROPOSED SITE**  
**DICKERSON POWER PLANT**  
 21200 MARTINSBURG RD, DICKERSON, MD 20842  
 LOTS 2, 3, 7, 8 AND 9  
 POOLEVILLE (RD) ELECTION DISTRICT, MONTGOMERY COUNTY, MARYLAND

TAX MAP BV	ZONING CATEGORY: IH, AR
2816G 27% SHEET 230NW1, 230NW2 230NW 21, 230NW22 230NW2, 230NW7	
SITE DATUM HORIZONTAL: NAD 83/91 VERTICAL: NAVD 88	
1" = 200'	
SHEET 2 OF 4	DATE: 7/23/2024 DESIGNED: TR TECHNICIAN: CWW CHECKED: JS CAD STDT: NCS
PROJECT NO. 40250002	