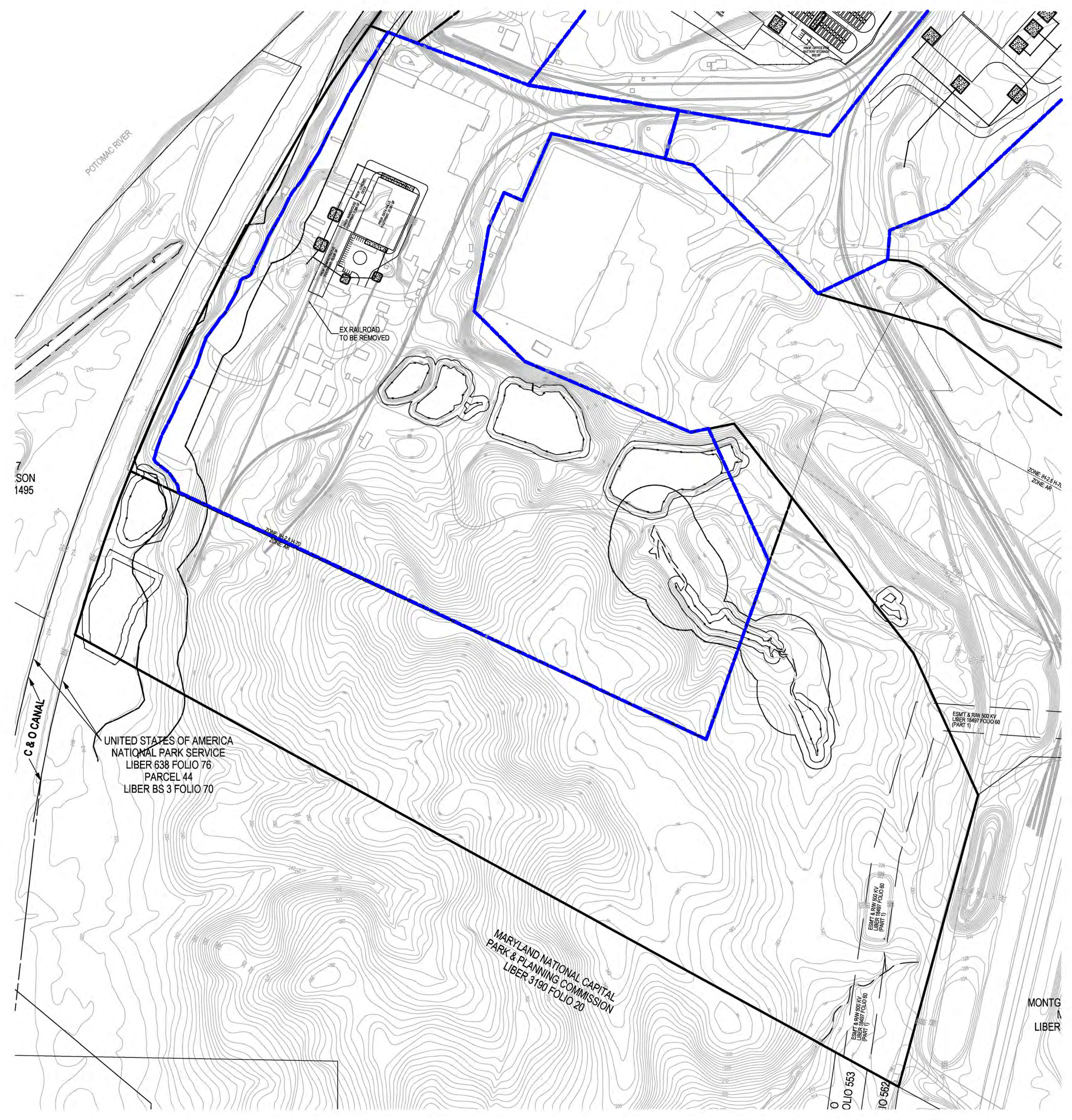


The original of this drawing document was prepared by Soltesz, Inc. (SOLTESZ). If this document was not obtained directly from SOLTESZ, Inc. it was transmitted electronically. SOLTESZ, Inc. makes no warranty, express or implied, concerning the accuracy of any information that has been transmitted by electronic means.

LEGEND:

	LIMIT OF DISTURBANCE (LOD)
	LIMITS OF FOREST STAND
	PERENNIAL STREAM
	STREAM VALLEY BUFFER
	WETLAND
	WETLAND BUFFER
	FLOODPLAIN
	ZONING LINE
	EASEMENT/RIGHT OF WAY
	PROPERTY BOUNDARY LINE
	TREE SAVE FENCE
	ROOT PRUNE
	EX CONTOUR MINOR
	EX CONTOUR MAJOR
	PROPOSED STORMWATER MANAGEMENT
	PROPOSED BUILDING
	PROPOSED STORMDRAIN
	LAND BAY FOOTPRINT FOR DEVELOPMENT
	PROPOSED FENCE

LANDBAY 1 FOOTPRINT: 47.44 (AC.) TO 67.77 (AC)
 *PLEASE NOTE THE LARGER OF THE FOOTPRINT IS SHOWN



SCALE: 1" = 200'



SOLTESZ, INC.
 ROCKVILLE OFFICE
 2 Research Place, Suite 100
 Rockville, MD 20850
 P. 301.948.2750 F. 301.948.9067
 www.solteszco.com

Engineering
 Surveying
 Planning
 Environmental Sciences

NO.	REVISIONS	BY	DATE

MISS UTILITY NOTE
 INFORMATION CONCERNING EXISTING UNDERGROUND UTILITIES WAS OBTAINED FROM AVAILABLE RECORDS. THE CONTRACTOR MUST DETERMINE THE EXACT LOCATION AND ELEVATION OF ALL EXISTING UTILITIES AND UTILITY CROSSINGS BY DIGGING TEST PITS BY HAND, WELL IN ADVANCE OF THE START OF EXCAVATION. CONTACT MISS UTILITY AT 1-800-251-7777 48 HOURS PRIOR TO THE START OF EXCAVATION. IF CLEARANCES ARE LESS THAN SHOWN ON THIS PLAN OR THESE 120 INCHES, WHICHEVER IS LESS, CONTACT THE ENGINEER AND THE UTILITY COMPANY BEFORE PROCEEDING WITH CONSTRUCTION. CLEARANCES LESS THAN NOTED MAY REQUIRE REVISIONS TO THIS PLAN.

OWNER / DEVELOPER / APPLICANT
 TERRA INNOVATIONS

904 206-8770
 JEFF@TERRAINNOVATIONS.COM
 JEFF FERREL

PROFESSIONAL CERTIFICATION
 I HEREBY CERTIFY THAT THESE DOCUMENTS WERE PREPARED OR APPROVED BY ME AND THAT I AM A FULLY LICENSED PROFESSIONAL ENGINEER UNDER THE LAWS OF THE STATE OF MARYLAND.
 LICENSE NO. _____ EXPIRATION DATE: _____

LAND BAY 1 PROPOSED SITE
DICKERSON POWER PLANT
 21200 MARTINSBURG RD, DICKERSON, MD 20842
 LOTS 2, 3, 7, 8 AND 9
 POOLEVILLE (9th) ELECTION DISTRICT, MONTGOMERY COUNTY, MARYLAND

TAX MAP BV	ZONING CATEGORY IH, AR
SHEET 2 OF 4 2810G 270' SHEET 2810W1 2810W2 2810W1 2810W2 2810W2 2810W2 2810W2 2810W2	
SITE DATUM HORIZONTAL: NAD 83/91 VERTICAL: NAVD 88	
1" = 200' 1" = 200'	
DATE: 4/22/2024 DESIGNED: TR TECHNICIAN: CWW CHECKED: JS CAD STDR: NCS	
PROJECT NO. 40250002	