

AFFIDAVIT OF POSTING

I HEREBY CERTIFY that I placed or caused to be placed upon the property which is the subject of a Preliminary Plan Application (120150100) three (3) signs which conform to Montgomery County specifications. The signs were posted on October 29th, 2014, around Old Colombia Pike and Industrial Parkway within ten (10) feet of the property line in the most conspicuous location, and the signs will be continuously maintained to the date of the hearing.

I understand that the signs are to be maintained in the same position until the Preliminary Plan Application has been accepted.



John Kidwiler
Bohler Engineering VA, LLC
16701 Melford Boulevard, Suite 310
Bowie, Maryland 20715
Tel. (301)-809-4500
Fax (301)-809-4501

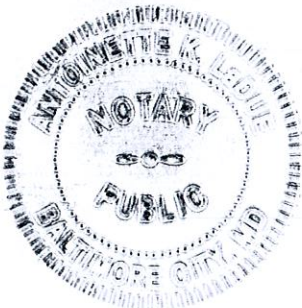
Subscribed and sworn to before me, a Notary Public for

Maryland, this 29th day of October 2014.

ANTOINETTE K. LaDUE
NOTARY PUBLIC
BALTIMORE CITY
MARYLAND
MY COMMISSION EXPIRES APRIL 2, 2018


NOTARY PUBLIC

My Commission Expires: **2 APR 2018**



OLD COLUMBIA PIKE

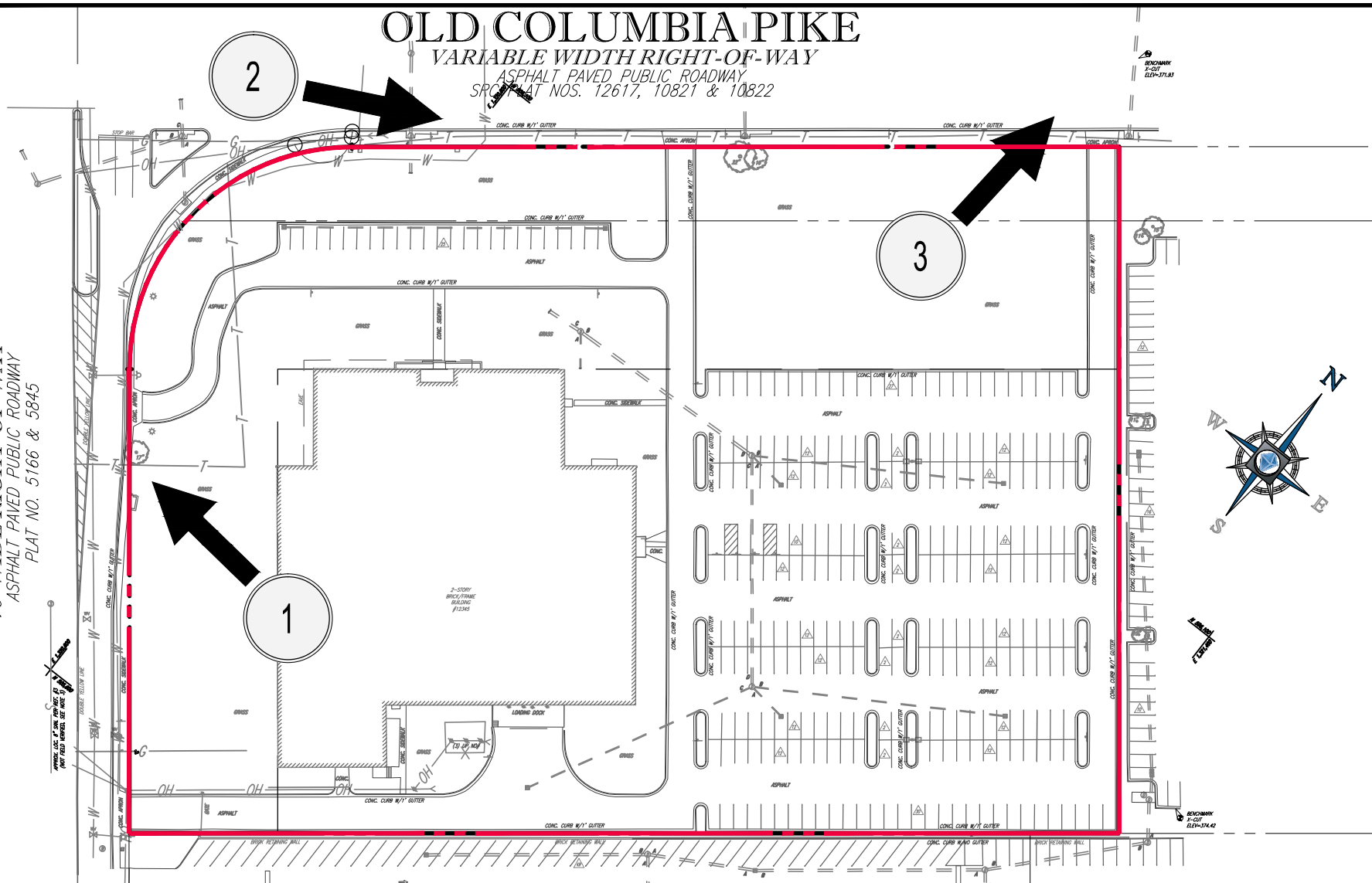
VARIABLE WIDTH RIGHT-OF-WAY

ASPHALT PAVED PUBLIC ROADWAY
 SPLIT LOT NOS. 12617, 10821 & 10822

ROADWAY
 2'-0" / 11'
 ELEV=571.81

INDUSTRIAL PARKWAY

70' WIDE RIGHT-OF-WAY
 ASPHALT PAVED PUBLIC ROADWAY
 PLAT NO. 5166 & 5845



H:\13\MB132050\DRAWINGS\EXHIBITS\SIGN POSTING PHOTO TOUR EXHIBIT\MB132050EX1.DWG PRINTED BY: HCAPENTER 10.29.14 @ 10:14 AM LAST

PROJECT NAME:

WHITE OAK TOWN CENTER
 12345 COLUMBIA PIKE
 SILVER SPRING, MONTGOMERY COUNTY, MD

SHEET TITLE:

FINAL SIGN POSTING PHOTO TOUR EXHIBIT
 SHEET 1 OF 1

SCALE:

AS SHOWN

DATE:

10/29/14

CAD ID:

EX1

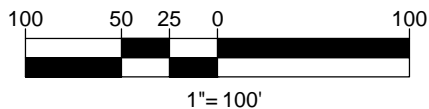
PROJECT NUMBER:

MB132050



BOHLER
 ENGINEERING

16701 MELFORD BLVD., SUITE 310 BOWIE, MD 20715
 PHONE: (301) 809-4500 FAX: (301) 809-4501



Bohler Engineering

Civil and Consulting Engineers • Surveyors • Project Managers • Environmental Consultants • Landscape Architects

16701 Melford Blvd, Suite 310, Bowie MD 20715 • Phone 301-809-4500 • Fax 301-809-4501

Sign 1



Bohler Engineering

Civil and Consulting Engineers • Surveyors • Project Managers • Environmental Consultants • Landscape Architects

16701 Melford Blvd, Suite 310, Bowie MD 20715 • Phone 301-809-4500 • Fax 301-809-4501

Sign 2



Bohler Engineering

Civil and Consulting Engineers • Surveyors • Project Managers • Environmental Consultants • Landscape Architects

16701 Melford Blvd, Suite 310, Bowie MD 20715 • Phone 301-809-4500 • Fax 301-809-4501

Sign 3

