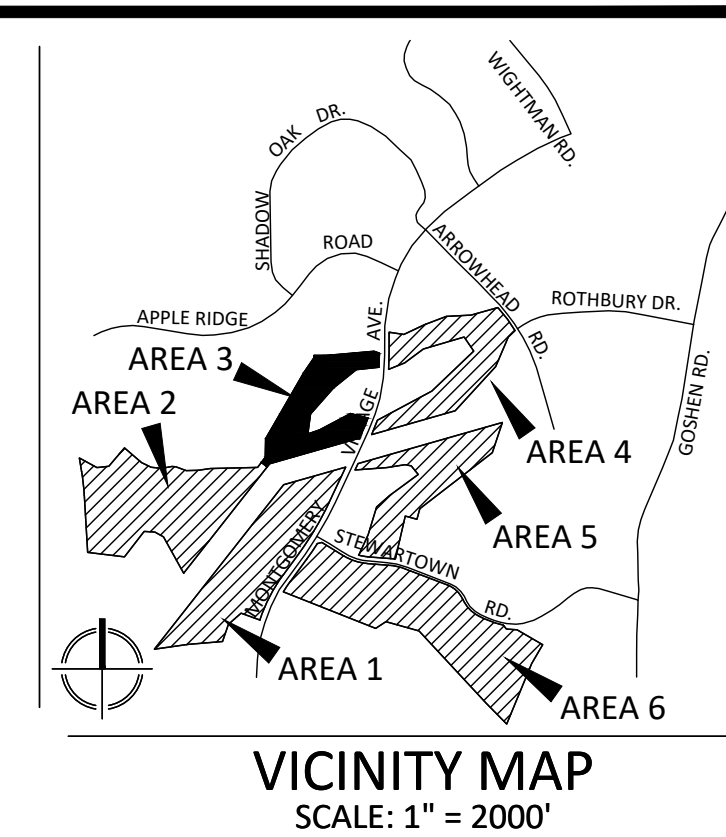


PLAN LEGEND

Table with multiple columns listing symbols and their corresponding descriptions for various utilities, structures, and landscape elements.



Prepared for: USL2 MR MONTGOMERY VILLAGE BUSINESS TRUST c/o MONUMENT REALTY... Design consultants: ARCHITECTS TORTI GALLAS AND PARTNERS, INC... ATTORNEY LERCH, EARLY & BREWER... TRAFFIC ENGINEER WELLS + ASSOCIATES... LANDSCAPE ARCHITECT VIKI MARYLAND, LLC... CIVIL ENGINEER VIKI MARYLAND, LLC



MATCHLINE SEE SHEET HS-12 AREA 4

MATCHLINE SEE SHEET HS-14 AREA 4

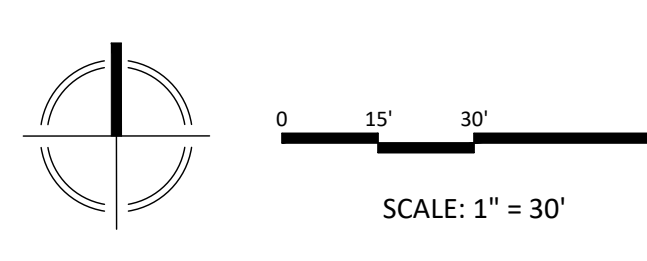
Table with two columns: REVISIONS and DATE, with multiple rows for recording changes.

PROFESSIONAL SEAL: VIKI MARYLAND, LLC, LANDSCAPE ARCHITECT, No. 3776, EXPIRATION DATE 12/31/2018

BLOOM MV AREA I-VI, 9TH ELECTION DISTRICT MONTGOMERY COUNTY, MARYLAND, WSSC GRID: 227NW09, TAX MAP: FU342, SP# 820170130

AREA 3 DETAILED HARDSCAPE PLAN

DEVELOPER'S CERTIFICATE: The undersigned agrees to execute all the features of the Site Plan Approval No. 820170130... Developer's Name: USL2 MR Montgomery Village Business Trust... Contact Person: Russell Hines... Address: 2200 K Street, NW, Suite 600, Washington, DC 20006... Phone: 202.777.2010



NOTE: SCHEMATIC DESIGN FOR ENTITLEMENT ONLY. NOT FOR CONSTRUCTION OR BIDDING PURPOSES.