

VICINITY MAP  
SCALE: 1" = 2000'



ENGINEERS PLANNERS SURVEYORS  
LANDSCAPE ARCHITECTS VIKA MARYLAND, LLC  
20251 CENTURY BOULEVARD SUITE 400  
GERMANTOWN, MARYLAND 20874  
PHONE: (301) 916-4100  
FAX: (301) 916-2262  
GERMANTOWN, MD. MCLEAN, VA.

PREPARED FOR:  
USL2 MR  
MONTGOMERY VILLAGE  
BUSINESS TRUST  
c/o MONUMENT REALTY  
1700 K STREET, NW, SUITE 600  
WASHINGTON, DC 20006  
202.777.2010  
RUSSELL HINES

DESIGN CONSULTANTS  
ARCHITECTS  
TORTI GALLAS AND  
PARTNERS, INC  
1300 SPRING STREET, SUITE 400  
SILVER SPRING, MD 20910  
301.588.4800  
ERIK J. AULESTIA

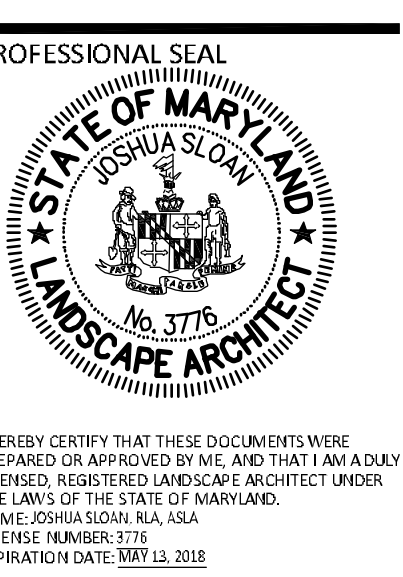
ATTORNEY  
LERCHE, EARLY & BREWER  
CHTD.  
3 BETHESDA METRO CENTER  
SUITE 460  
BETHESDA, MD 20814  
301.841.3833  
PATRICIA HARRIS

TRAFFIC ENGINEER  
WELLS + ASSOCIATES  
8730 GEORGIA AVENUE, SUITE 200  
SILVER SPRING, MD 20910  
301.448.1333  
KEVIN BERGER

LANDSCAPE ARCHITECT  
VKA MARYLAND, LLC  
20251 CENTURY BOULEVARD  
SUITE 400  
GERMANTOWN MD, 20874  
301.916.4100  
JOSH SLOAN

CIVIL ENGINEER  
VKA MARYLAND, LLC  
20251 CENTURY BOULEVARD  
SUITE 400  
GERMANTOWN MD, 20874  
301.916.4100  
MIKE GOODMAN

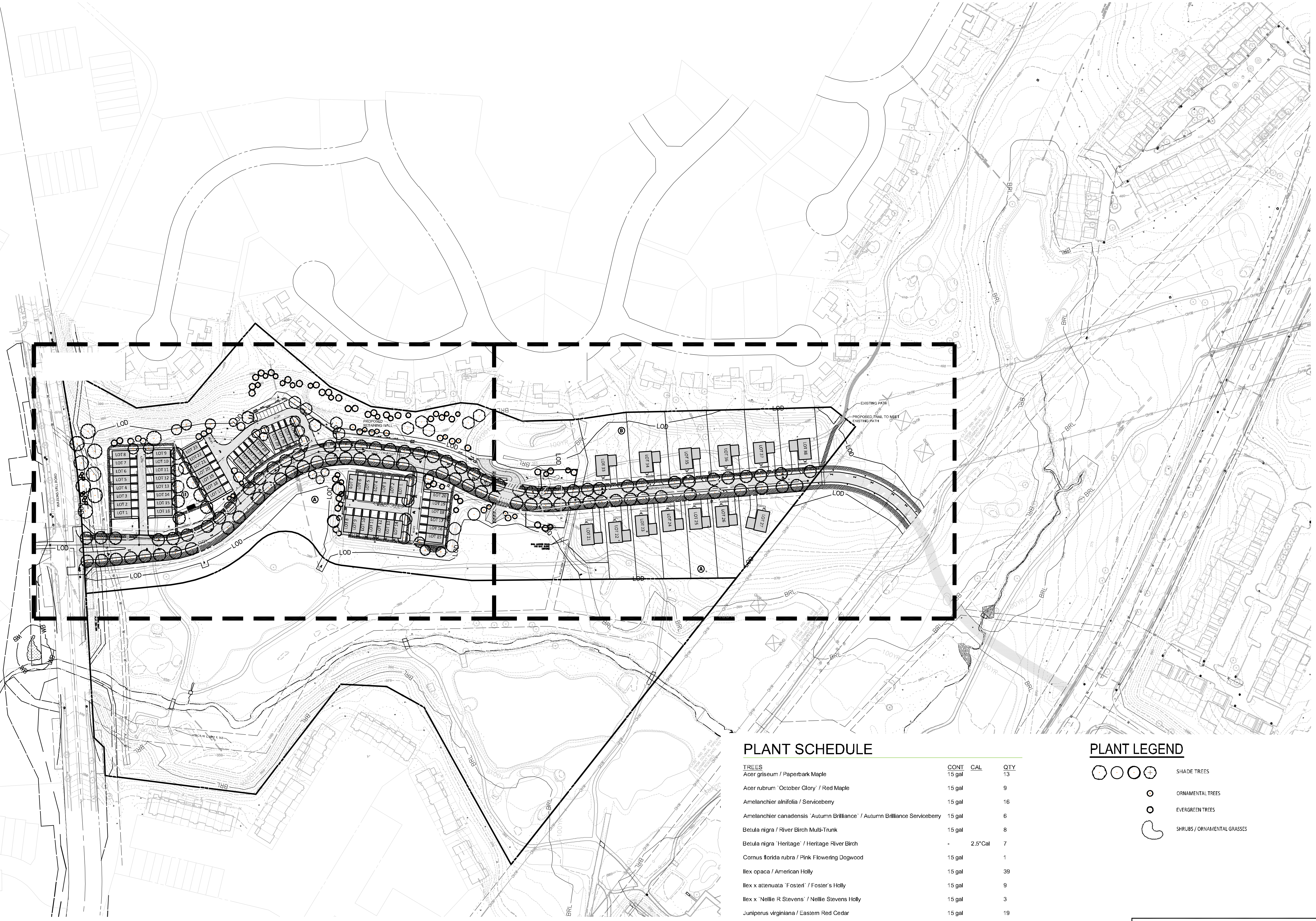
REVISIONS	DATE



**BLOOM MV  
AREA I-VI**  
9TH ELECTION DISTRICT  
MONTGOMERY COUNTY,  
MARYLAND  
WSSC GRID: 227NW09  
TAX MAP: FU342  
**SP# 820170130**

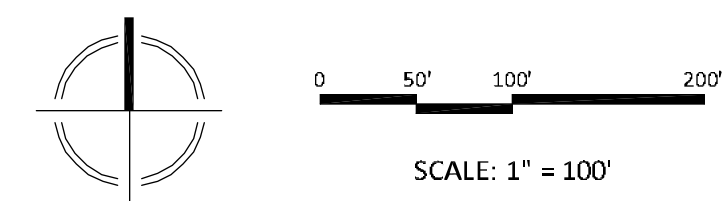
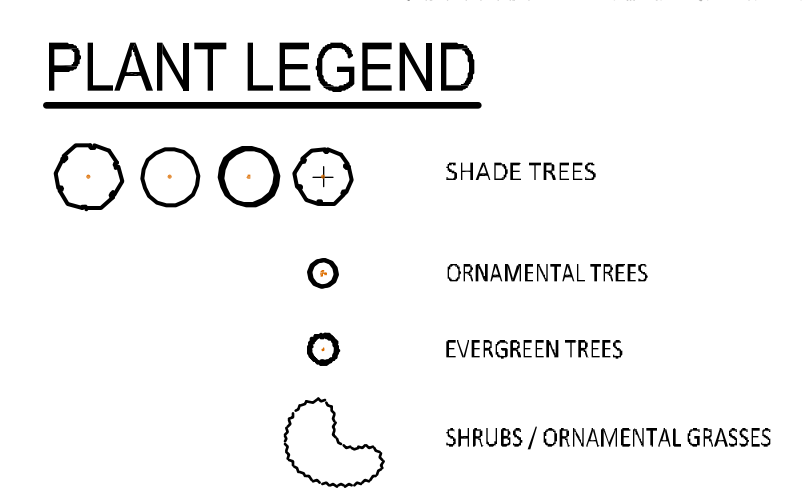
**AREA 2  
COMPOSITE  
LANDSCAPE  
PLAN**

DRAWN BY: PJS  
DESIGNED BY: DLK-JS-SCM  
DATE ISSUED: May 5, 2017  
VKA PROJECT VM1920  
DRAWING NO.  
SHEET NO. LA-09



**PLANT SCHEDULE**

TREES	CONT	CAL	QTY
Acer griseum / Paperbark Maple	15 gal		13
Acer rubrum 'October Glory' / Red Maple	15 gal		9
Amelanchier alnifolia / Serviceberry	15 gal		16
Amelanchier canadensis 'Autumn Brilliance' / Autumn Brilliance Serviceberry	15 gal		6
Betula nigra / River Birch Multi-Trunk	15 gal		8
Betula nigra 'Heritage' / Heritage River Birch	-	2.5' Cal	7
Cornus florida rubra / Pink Flowering Dogwood	15 gal		1
Ilex opaca / American Holly	15 gal		39
Ilex x attenuata 'Fosteri' / Foster's Holly	15 gal		9
Ilex x 'Nellie R Stevens' / Nellie Stevens Holly	15 gal		3
Juniperus virginiana / Eastern Red Cedar	15 gal		19
Liquidambar styraciflua / American Sweet Gum	-	2.5' Cal	2
Nyssa sylvatica 'Black Tupelo' / Sour Gum	-	2.5' Cal	11
Ulmus americana 'Valley Forge' / American Elm	-	2.5' Cal	97



NOTE: SCHEMATIC DESIGN FOR ENTITLEMENT ONLY.  
NOT FOR CONSTRUCTION OR BIDDING PURPOSES.