

VICINITY MAP
SCALE: 1" = 2000'



PREPARED FOR:
USL2 MR
MONTGOMERY VILLAGE BUSINESS TRUST
c/o MONUMENT REALTY
750 17th STREET, NW, SUITE 1100
WASHINGTON, DC 20006
202.777.2010
RUSSELL HINES

DESIGN CONSULTANTS

ARCHITECTS
TORTI GALLAS AND PARTNERS, INC.
1300 SPRING STREET, SUITE 400
SILVER SPRING, MD 20910
301.588.4800
ERIK J. AULESTIA

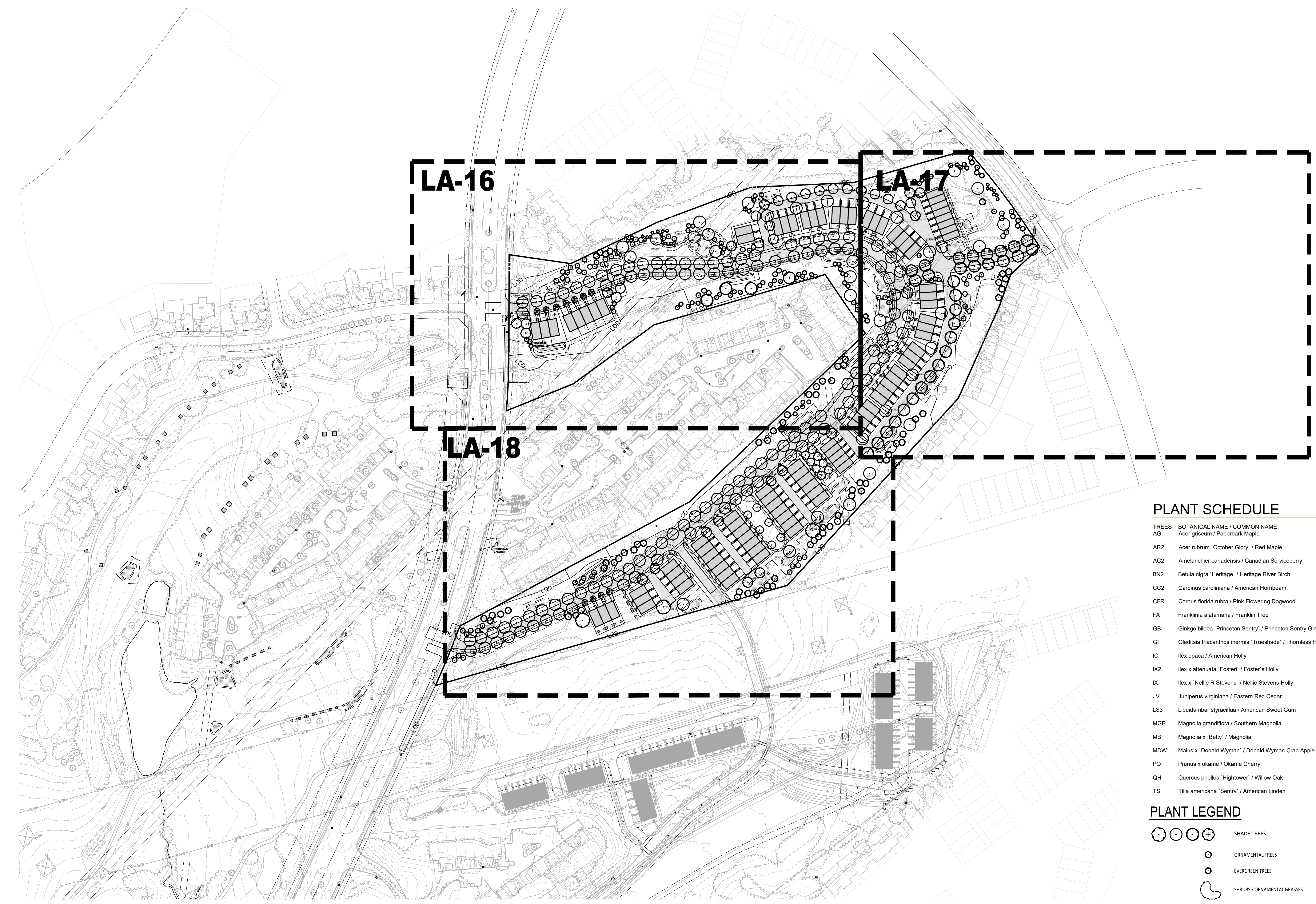
ATTORNEY
LERCH, EARLY & BREWER
CHTD.
3 BETHESDA METRO CENTER
SUITE 460
BETHESDA, MD 20814
301.841.3832
PATRICIA HARRIS

TRAFFIC ENGINEER
WELLS + ASSOCIATES
8730 GEORGIA AVENUE, SUITE 200
SILVER SPRING, MD 20910
301.448.1333
KEVIN BERGER

LANDSCAPE ARCHITECT
VIKA MARYLAND, LLC
20251 CENTURY BOULEVARD
SUITE 400
GERMANTOWN MD, 20874
301.916.4100
JOSH SLOAN

CIVIL ENGINEER
VIKA MARYLAND, LLC
20251 CENTURY BOULEVARD
SUITE 400
GERMANTOWN MD, 20874
301.916.4100
MIKE GOODMAN

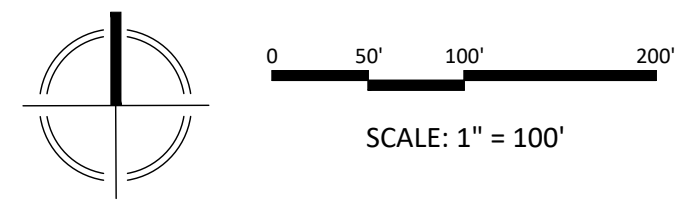
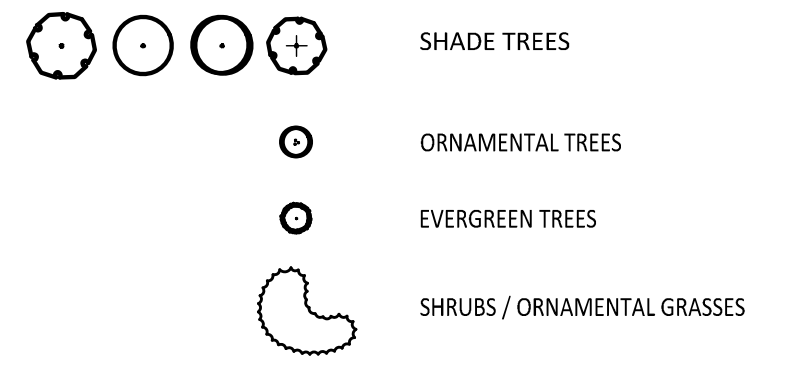
REVISIONS	DATE
DRC COMMENTS	08/09/17
REVIEWERS	08/31/17
COMMENTS	



PLANT SCHEDULE

TREES	BOTANICAL NAME / COMMON NAME	CONT	CAL	QTY
AG	Acer griseum / Paperbark Maple	15 gal		17
AR2	Acer rubrum 'October Glory' / Red Maple	15 gal		3
AC2	Amelanchier canadensis / Canadian Serviceberry	15 gal		5
BN2	Betula nigra 'Heritage' / Heritage River Birch	-	2.5'Cal	35
CC2	Carpinus caroliniana / American Hornbeam	15 gal		11
CFR	Cornus florida rubra / Pink Flowering Dogwood	15 gal		3
FA	Franklinia alatamaha / Franklin Tree	15 gal		6
GB	Ginkgo biloba 'Princeton Sentry' / Princeton Sentry Ginkgo	15 gal		8
GT	Gleditsia triacanthos inermis 'Trueshade' / Thornless Honey Locust	15 gal		31
IO	Ilex opaca / American Holly	15 gal		66
IX2	Ilex x attenuata 'Fosteri' / Foster's Holly	15 gal		59
IX	Ilex x 'Nellie R. Stevens' / Nellie Stevens Holly	15 gal		20
JV	Juniperus virginiana / Eastern Red Cedar	15 gal		22
LS3	Liquidambar styraciflua / American Sweet Gum	-	2.5'Cal	4
MGR	Magnolia grandiflora / Southern Magnolia	15 gal		1
MB	Magnolia x 'Betty' / Magnolia	15 gal		1
MDW	Malus x 'Donald Wyman' / Donald Wyman Crab Apple	15 gal		25
PO	Prunus x okame / Okame Cherry	15 gal		36
QH	Quercus phellos 'Hightower' / Willow Oak	-	2.5'Cal	117
TS	Tilia americana 'Sentry' / American Linden	-	2.5'Cal	18

PLANT LEGEND



NOTE: LANDSCAPING WITHIN STORMWATER FACILITIES IS ILLUSTRATIVE ONLY AND MAY BE CHANGED AT THE TIME OF DETAILED PLAN REVIEW OF THE SEDIMENT CONTROL/STORMWATER MANAGEMENT PLANS BY THE MONTGOMERY COUNTY DPS, WATER RESOURCES SECTION.

DEVELOPER'S CERTIFICATE
The undersigned agrees to execute all the features of the Site Plan Approval No. 820170130, including Approval Conditions, Development Program, and Certified Site Plan.

Developer's Name: USL2 MR Montgomery Village Business Trust
 Contact Person: Russell Hines
 Address: 2200 K Street, NW, Suite 600, Washington, DC 20006
 Phone: 202.777.2010

Signature: _____ Date: _____



BLOOM MV AREA I-VI
9TH ELECTION DISTRICT
MONTGOMERY COUNTY, MARYLAND
WSSC GRID: 227NW09
TAX MAP: FU342
SP# 820170130

AREA 4 COMPOSITE LANDSCAPE PLAN

DRAWN BY: PJS
DESIGNED BY: DLK - JS - SCM
DATE ISSUED: May 5, 2017
VIKA PROJECT: VM1920
DRAWING NO.: _____
SHEET NO.: LA-15