



ENGINEERS PLANNERS
LANDSCAPE ARCHITECTS SURVEYORS
VIKA MARYLAND, LLC
20251 CENTURY BOULEVARD, SUITE 400
GERMANTOWN, MARYLAND 20874
PHONE: (301) 916-4100
FAX: (301) 916-2262
GERMANTOWN, MD. MCLEAN, VA.

PREPARED FOR:
USL2 MR
MONTGOMERY VILLAGE
BUSINESS TRUST
c/o MONUMENT REALTY
750 17th STREET, NW, SUITE 1100
WASHINGTON, DC 20006
202.777.2010
RUSSELL HINES

DESIGN CONSULTANTS

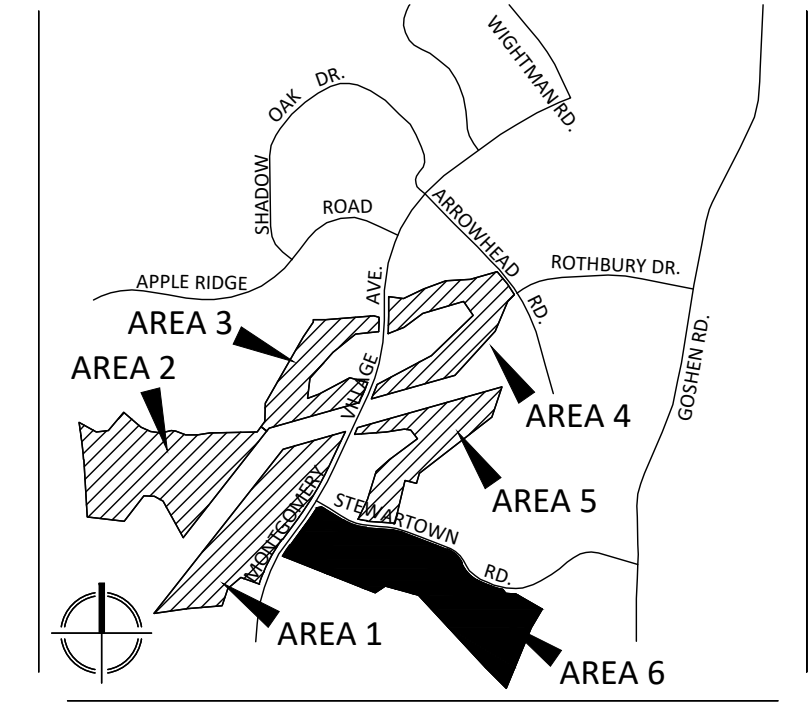
ARCHITECTS
TORTI GALLAS AND PARTNERS, INC
1300 SPRING STREET, SUITE 400
SILVER SPRING, MD 20910
301.588.4800
ERIK J. AULESTIA

ATTORNEY
LERCH, EARLY & BREWER
CHTD.
3 BETHESDA METRO CENTER
SUITE 460
BETHESDA, MD 20814
301.843.3832
PATRICIA HARRIS

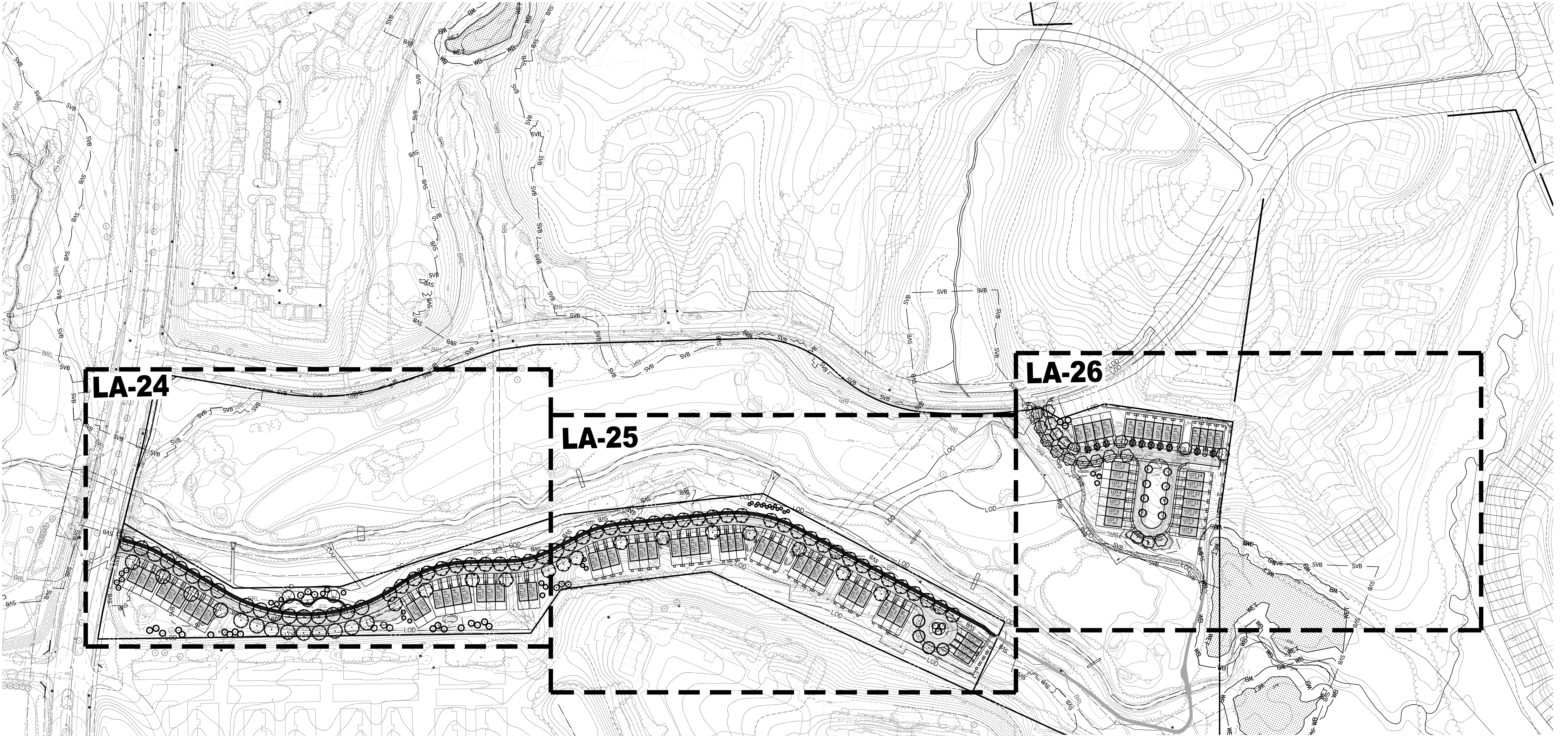
TRAFFIC ENGINEER
WELLS + ASSOCIATES
8730 GEORGIA AVENUE, SUITE 200
SILVER SPRING, MD 20910
301.448.1333
KEVIN BERGER

LANDSCAPE ARCHITECT
VIKA MARYLAND, LLC
20251 CENTURY BOULEVARD
SUITE 400
GERMANTOWN MD, 20874
301.916.4100
JOSH SLOAN

CIVIL ENGINEER
VIKA MARYLAND, LLC
20251 CENTURY BOULEVARD
SUITE 400
GERMANTOWN MD, 20874
301.916.4100
MIKE GOODMAN



VICINITY MAP
SCALE: 1" = 2000'



REVISIONS	DATE
DRC COMMENTS	08/09/17
REVIEWERS	08/31/17
COMMENTS	



I HEREBY CERTIFY THAT THESE DOCUMENTS WERE PREPARED OR APPROVED BY ME, AND THAT I AM A DULY LICENSED PROFESSIONAL ENGINEER UNDER THE ENGINEERING PROFESSIONAL ACT OF MARYLAND.
NAME: RUSSELL HINES
LICENSE NUMBER: 13754
EXPIRATION DATE: 08/31/2017

BLOOM MV
AREA I-VI
9TH ELECTION DISTRICT
MONTGOMERY COUNTY,
MARYLAND
WSSC GRID: 227NW09
TAX MAP: FU342
SP# 820170130

AREA 6
COMPOSITE
LANDSCAPE
PLAN

DRAWN BY: PJS
DESIGNED BY: DLK-JS-SCM
DATE ISSUED: May 5, 2017
VIKA PROJECT VM1920
DRAWING NO. XXX
SHEET NO. LA-23

PLANT SCHEDULE

TREES	BOTANICAL NAME / COMMON NAME	CONT	CAL	QTY
AJ	Acer japonicum / Amur Maple	15 gal		3
AR2	Acer rubrum 'October Glory' / Red Maple	15 gal		30
AC3	Amelanchier canadensis 'Autumn Brilliance' / Autumn Brilliance Serviceberry	15 gal		3
BN2	Betula nigra 'Heritage' / Heritage River Birch	-	2.5'Cal	3
CC2	Carpinus caroliniana / American Hornbeam	15 gal		16
CC	Cercis canadensis 'Forest Pansy' TM / Forest Pansy Redbud	15 gal		3
GT	Gleditsia triacanthos inermis 'Trueshade' / Thornless Honey Locust	15 gal		4
HC	Halesia tetraptera / Carolina Silverbell	15 gal		5
IO	Ilex opaca / American Holly	15 gal		13
IX2	Ilex x attenuata 'Fosteri' / Foster's Holly	15 gal		6
IX	Ilex x 'Nellie R Stevens' / Nellie Stevens Holly	15 gal		12
JV	Juniperus virginiana / Eastern Red Cedar	15 gal		14
MGR	Magnolia grandiflora / Southern Magnolia	15 gal		8
MV	Magnolia virginiana / Sweet Bay	15 gal		3
PB	Platanus x acerifolia 'Bloodgood' / London Plane Tree	-	2.5'Cal	55
QC	Quercus coccinea / Scarlet Oak	-	2.5'Cal	20
UP	Ulmus parvifolia / Chinese Elm	15 gal		8

PLANT LEGEND

- SHADE TREES
- ORNAMENTAL TREES
- EVERGREEN TREES
- SHRUBS / ORNAMENTAL GRASSES

NOTE: LANDSCAPING WITHIN STORMWATER FACILITIES IS ILLUSTRATIVE ONLY AND MAY BE CHANGED AT THE TIME OF DETAILED PLAN REVIEW OF THE SEDIMENT CONTROL/STORMWATER MANAGEMENT PLANS BY THE MONTGOMERY COUNTY DPS, WATER RESOURCES SECTION.

