

TAG #	COMMON NAME	BOTANICAL NAME	DBH	RATING	SPECIMEN TREE	NOTES
91	WHITE PINE	<i>Pinus strobus</i>	28	FAIR	NO	BROKEN BRANCHES
92	WHITE PINE	<i>Pinus strobus</i>	28	GOOD	NO	
93	WHITE PINE	<i>Pinus strobus</i>	25	FAIR	NO	BRANCH DAMAGE
94	WHITE PINE	<i>Pinus strobus</i>	28	GOOD	NO	
95	WHITE PINE	<i>Pinus strobus</i>	28	GOOD	NO	
96	SPRUCE	<i>Picea (ssp)</i>	28.5	POOR	NO	EXCESSIVE PRUNING SIDE SHEERED BY UTILITY COMPANY
97	WHITE PINE	<i>Pinus strobus</i>	34	POOR	YES	SPLIT LEADERS AND BRANCH DAMAGE
98	PIN OAK	<i>Quercus palustris</i>	33	GOOD	YES	
401*	WHITE PINE	<i>Pinus strobus</i>	25	GOOD	NO	
402*	WHITE PINE	<i>Pinus strobus</i>	31	GOOD	YES	
101	WHITE PINE	<i>Pinus strobus</i>	26	GOOD	NO	
406*	WHITE PINE	<i>Pinus strobus</i>	25	GOOD	NO	
404*	WHITE PINE	<i>Pinus strobus</i>	25	GOOD	NO	
407*	WHITE PINE	<i>Pinus strobus</i>	25	FAIR	NO	BRANCH DAMAGE
403*	WHITE PINE	<i>Pinus strobus</i>	26	GOOD	NO	
106	WHITE PINE	<i>Pinus strobus</i>	27	GOOD	NO	
107	SPRUCE	<i>Picea (ssp)</i>	29	GOOD	NO	
409*	PIN OAK	<i>Quercus palustris</i>	34	FAIR	YES	BRANCH DAMAGE, TRUNK SPLITS AT 18FT
109	WHITE PINE	<i>Pinus strobus</i>	30	POOR	YES	MAJOR BRANCHES DAMAGED, LEADER DEAD
110	WHITE PINE	<i>Pinus strobus</i>	32	POOR	YES	DAMAGED LEADER AND BRANCHES
111	WHITE PINE	<i>Pinus strobus</i>	36	FAIR	YES	SOME BRANCHES DAMAGED
112	WHITE PINE	<i>Pinus strobus</i>	28	POOR	NO	MAJOR BRANCHES DAMAGED
113	WHITE PINE	<i>Pinus strobus</i>	25	GOOD	NO	
114	WHITE PINE	<i>Pinus strobus</i>	29	GOOD	NO	
115	WHITE PINE	<i>Pinus strobus</i>	24	FAIR	NO	SOME BRANCHES DAMAGED
408*	WHITE PINE	<i>Pinus strobus</i>	26	POOR	NO	EXCESSIVE PRUNING SIDE SHEERED BY UTILITY COMPANY
117	WHITE PINE	<i>Pinus strobus</i>	26	GOOD	NO	
118	WHITE PINE	<i>Pinus strobus</i>	26	FAIR	NO	BROKEN BRANCHES
412*	WHITE PINE	<i>Pinus strobus</i>	29	GOOD	NO	
120	WHITE PINE	<i>Pinus strobus</i>	29	FAIR	NO	BROKEN BRANCHES
411*	SPRUCE	<i>Picea (ssp)</i>	25	FAIR	NO	3 LEADERS - SPLITS AT 15FT
122	WHITE PINE	<i>Pinus strobus</i>	26	FAIR	NO	BROKEN BRANCHES
123	WHITE PINE	<i>Pinus strobus</i>	30	GOOD	YES	
124	WHITE PINE	<i>Pinus strobus</i>	29	POOR	NO	VISABLE ROT - DEAD
125	WHITE PINE	<i>Pinus strobus</i>	26	FAIR	NO	BROKEN BRANCHES
413*	WHITE PINE	<i>Pinus strobus</i>	26	FAIR	NO	BROKEN BRANCHES
127	WHITE PINE	<i>Pinus strobus</i>	30	GOOD	YES	
128	WHITE PINE	<i>Pinus strobus</i>	27	GOOD	NO	
414*	WHITE PINE	<i>Pinus strobus</i>	25	FAIR	NO	DOUBLE AT 2FT
415*	WHITE PINE	<i>Pinus strobus</i>	26	FAIR	NO	BROKEN BRANCHES
131	WHITE PINE	<i>Pinus strobus</i>	29	FAIR	NO	BROKEN BRANCHES
132	WHITE PINE	<i>Pinus strobus</i>	33	FAIR	YES	BROKEN BRANCHES
416*	WHITE PINE	<i>Pinus strobus</i>	28	POOR	NO	MAJOR BROKEN BRANCHES
417*	WHITE PINE	<i>Pinus strobus</i>	27	GOOD	NO	
135	WHITE PINE	<i>Pinus strobus</i>	27	FAIR	NO	BROKEN BRANCHES
136	WHITE PINE	<i>Pinus strobus</i>	28	GOOD	NO	
419*	WHITE PINE	<i>Pinus strobus</i>	29	GOOD	NO	
420*	WHITE PINE	<i>Pinus strobus</i>	28	FAIR	NO	SPLIT LEADER
139	WHITE PINE	<i>Pinus strobus</i>	36	FAIR	YES	BROKEN BRANCHES - SPLIT LEADER
140	WHITE PINE	<i>Pinus strobus</i>	24	GOOD	NO	
422*	WHITE PINE	<i>Pinus strobus</i>	26	FAIR	NO	BROKEN BRANCHES
423*	WHITE PINE	<i>Pinus strobus</i>	34	FAIR	YES	LIGHTING DAMAGE TO BRANCHES
424*	AMERICAN SYCAMORE	<i>Platanus occidentalis</i>	50	POOR	YES	MAJOR BROKEN BRANCHES
425*	WHITE PINE	<i>Pinus strobus</i>	30	GOOD	YES	
145	WHITE PINE	<i>Pinus strobus</i>	31	GOOD	YES	
146	WHITE PINE	<i>Pinus strobus</i>	25	FAIR	NO	DOUBLE AT 4FT
147	WHITE PINE	<i>Pinus strobus</i>	25	GOOD	NO	
148	WHITE PINE	<i>Pinus strobus</i>	26	FAIR	NO	BROKEN BRANCHES
149	WHITE PINE	<i>Pinus strobus</i>	32	GOOD	YES	
150	WHITE PINE	<i>Pinus strobus</i>	30	FAIR	YES	SPLIT LEADER
429*	WHITE PINE	<i>Pinus strobus</i>	34	POOR	YES	DAMAGED LEADER AND BRANCHES
152	WHITE PINE	<i>Pinus strobus</i>	30	FAIR	YES	BROKEN BRANCHES
428*	WHITE PINE	<i>Pinus strobus</i>	26	FAIR	NO	BROKEN BRANCHES
154	PIN OAK	<i>Quercus palustris</i>	31	POOR	YES	MAJOR DAMAGED BRANCHES AND LEADER
155	WHITE PINE	<i>Pinus strobus</i>	25	GOOD	NO	
156	WHITE PINE	<i>Pinus strobus</i>	28	GOOD	NO	
157	WHITE PINE	<i>Pinus strobus</i>	31	GOOD	YES	
158	SPRUCE	<i>Picea (ssp)</i>	27	GOOD	NO	
159	SPRUCE	<i>Picea (ssp)</i>	28	GOOD	NO	
160	SPRUCE	<i>Picea (ssp)</i>	26	GOOD	NO	
427*	SPRUCE	<i>Picea (ssp)</i>	25	GOOD	NO	
162	SPRUCE	<i>Picea (ssp)</i>	28	GOOD	NO	
426*	WHITE PINE	<i>Pinus strobus</i>	24	FAIR	NO	
164	WHITE PINE	<i>Pinus strobus</i>	25	POOR	NO	MAJOR DAMAGED BRANCHES AND LEADER
165	WHITE PINE	<i>Pinus strobus</i>	25	POOR	NO	MAJOR DAMAGED BRANCHES AND LEADER
166	WHITE PINE	<i>Pinus strobus</i>	29	POOR	NO	
167	WHITE PINE	<i>Pinus strobus</i>	32	POOR	YES	2 LEADER @25FT - BROKEN BRANCHES
168	WHITE PINE	<i>Pinus strobus</i>	29	FAIR	NO	BROKEN LEADER
169	WHITE PINE	<i>Pinus strobus</i>	25	FAIR	NO	LOPSIDED CROWN
405	PIN OAK	<i>Quercus palustris</i>	24.5	FAIR	NO	DEAD BRANCHES
418	BLACK CHERRY	<i>Prunus serotina</i>	24	FAIR	NO	BROKEN BRANCHES
421	WHITE PINE	<i>Pinus strobus</i>	24.5	GOOD	NO	
430	WHITE PINE	<i>Pinus strobus</i>	25	GOOD	NO	
431	WHITE PINE	<i>Pinus strobus</i>	24	GOOD	NO	
432	RED MAPLE	<i>Acer rubrum</i>	44	GOOD	YES	

Tag numbers 91 through 169 are significant/specimen trees previously tagged by Soltez and were field verified by Ecotone, Inc.  
 \* Tag numbers 401 through 426 are trees previously tagged by Soltez, were field verified by Ecotone, however the tags have fallen off of the trees.  
 Tag numbers 405, 418, 421, 430, 431, and 432 are new significant trees identified by Ecotone.

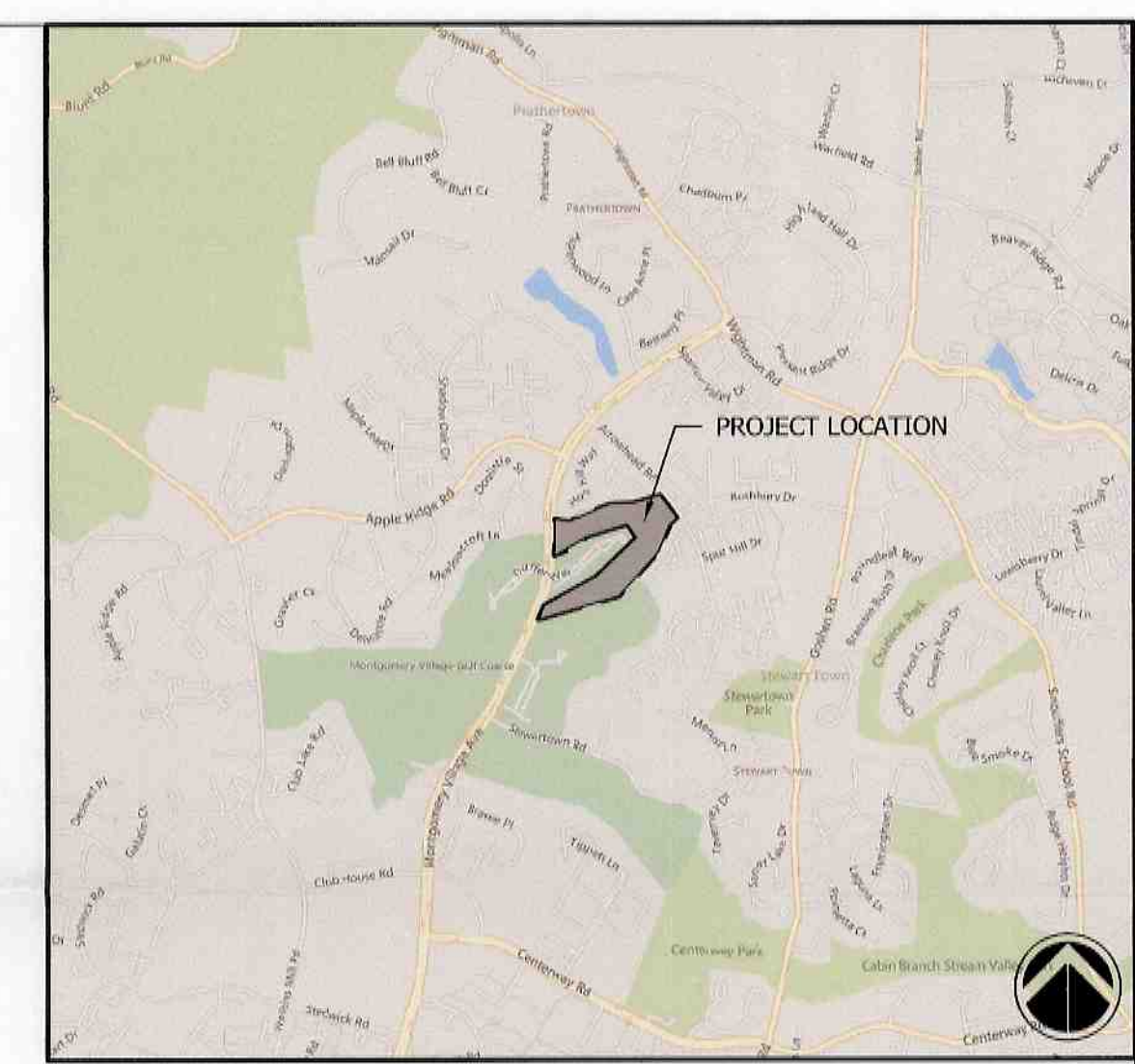
**NATURAL RESOURCE INVENTORY NOTES:**

- THE NET TRACT AREA (STUDY AREA) FOR THE PURPOSE OF THIS STUDY IS ±17.3 ACRES.
- NO AREAS ON SITE MEET THE TECHNICAL DEFINITION OF FOREST.
- THERE ARE 77 SIGNIFICANT TREES WITH DBH GREATER THAN OR EQUAL TO 2" IDENTIFIED ON SITE.
- 22 OF THE 77 SIGNIFICANT TREES ON SITE ARE SPECIMEN TREES AS INDICATED ON THE NRI TREE TABLE.
- FSD FIELD WORK WAS CONDUCTED BY SEAN MCDONOUGH OF ECOTONE, INC. ON MARCH 13, 2015. A TREE TAPE WAS USED TO THE MEASURE DBH OF TREES. FIELD DATA SUMMARY WERE NOT COMPLETED DUE TO THE LACK OF FOREST ON-SITE. SIGNIFICANT AND SPECIMEN TREES WERE SURVEYED WITHIN THE LIMITS OF THE 17.3 ACRE STUDY AREA. EXISTING VEGETATION INFORMATION ASSOCIATED WITH THIS PROPERTY IS AS SHOWN ON THIS PLAN.
- THE SUBJECT PROPERTY IS NOT IDENTIFIED IN THE MONTGOMERY COUNTY LOCAL ANTLAS AND INDEX OF HISTORIC SITES.
- THERE ARE NO WATERS OF THE UNITED STATES, WETLANDS, OR ASSOCIATED BUFFER LOCATED ON SITE AS IDENTIFIED BY SOLTEZ.
- 100 YEAR FLOODPLAIN IS LOCATED WITHIN THE STUDY AREA ACCORDING TO FEMA FLOODPLAIN MAP PANEL NO. 24031C 0187D.
- THE SITE IS NOT WITHIN AN SPA OR PMA.
- THE SITE IS LOCATED IN THE CABIN BRANCH WATERSHED, A USE CLASS 1 STREAM.
- NO RARE, THREATENED OR ENDANGERED SPECIES WERE ENCOUNTERED ON THE SITE. A REQUEST LETTER HAS BEEN SENT TO THE WILDLIFE HERITAGE DIVISION OF THE MD DNR REQUESTING A DETERMINATION THAT NO RECORDS OF THE PRESENCE OF RARE, THREATENED OR ENDANGERED SPECIES EXIST WITHIN THE PROJECT SITE.
- SITE SURVEY INFORMATION WAS PROVIDED BY SOLTEZ AND M-NCPPC GIS DATA.
- THE SITE IS LOCATED ON WSSC MAP 227N/W09.
- THE SITE IS COMPRISED OF AN EXISTING GOLF COURSE AND IS PRIMARILY LAWN/LANDSCAPE.
- TREELINES SHOWN ON THIS PLAN PROVIDED BY VIKI.

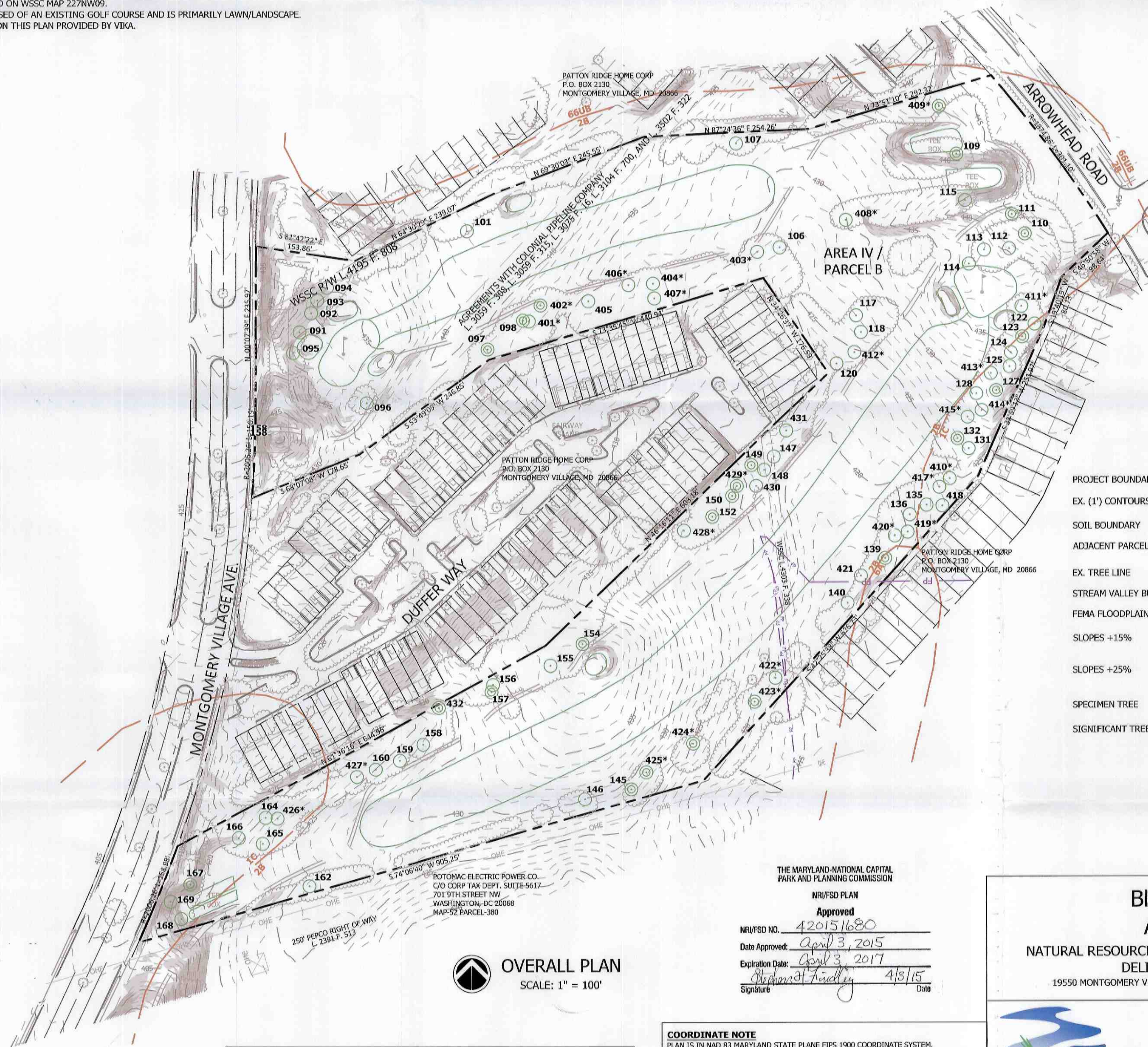
**SITE DESCRIPTION**

The ±17.3 acre study area shown on this plan encompasses a portion of the Montgomery Village Golf Course. The site is situated on the east side of Montgomery Avenue and the west side of Arrowhead Road, is on Tax Map 42 Parcel 510 and is identified as Parcel B. The study area contains an existing golf course consisting of lawn/landscape (a mixture of lawns, greens, and sandtraps) with a perimeter of mature planted trees.

Mapped soils in the study area are primarily Glenelg silt loam with some Galla silt loam and Baile silt loam. Topography on the site is gently sloping from north to south with more steep slopes along the east side of Montgomery Avenue. 77 significant trees were identified with the ±17.3 acre study area, of which 22 were specimen trees. The study area drains into a tributary of and eventually into Cabin Branch which is Use-1 waters. No jurisdictional water resources (streams or non-tidal wetlands) were identified within the study area. While there are a significant amount of significant/specimen trees, no area on-site met the technical definition of forest due to the maintained nature of the golf course.



VICINITY MAP  
SCALE: 1" = 2000'



**OVERALL PLAN**  
SCALE: 1" = 100'

**MAPPED SOILS LEGEND**

SYMBOL	SOIL SERIES	HIGHLY ERODIBLE	HYDRIC	PRIME AGR.
1C	Galla silt loam, 8-15% slopes	No	No	No
2B	Glenelg silt loam, 3-8% slopes	No	No	No
6A	Baile silt loam, 0-3%	No	Yes	No

**UTILITY NOTIFICATION**

"Ecotone, Inc. makes no representation as to the existence or non-existence of any utilities at the construction site. Shown on these construction drawings are those utilities which have been identified. It is the responsibility of the landowners or operators and contractors to assure themselves that no hazard exists or damage will occur to utilities. It is suggested that Miss Utility be contacted at: 1-800-257-7777."

**LEGEND**

- PROJECT BOUNDARY: Dashed line
- EX. (1') CONTOURS: Dashed line with '1'
- SOIL BOUNDARY: Dashed line with 'S'
- ADJACENT PARCELS: Dotted line
- EX. TREE LINE: Wavy line
- STREAM VALLEY BUFFER: Line with 'S' and 'V'
- FEMA FLOODPLAIN: Line with 'F'
- SLOPES +15%: Shaded area
- SLOPES +25%: Shaded area
- SPECIMEN TREE: Circle with 'S'
- SIGNIFICANT TREE: Circle with 'T'

**RESOURCE AREA INFORMATION**

DESCRIPTION	AREA
TRACT AREA	17.3 AC.
FOREST AREA	0 AC.
WETLAND AREA	0 AC.
FORESTED WETLAND AREA	0 AC.
STREAM BUFFER AREA	0 AC.
FORESTED STREAM BUFFER AREA	0 AC.
STREAM BUFFER AVERAGE WIDTH	0 FT.
100-YEAR FLOODPLAIN AREA	0.40 AC.
FORESTED 100-YEAR FLOODPLAIN	0 AC.
STREAM LENGTH ON SITE	0 LF.
PMA ON SITE	0 AC.

**PROPERTY OWNER INFORMATION**  
 USL2 MR MONTGOMERY VILLAGE BUSINESS TRUST  
 C/O MONUMENT REALTY LLC  
 1700 K STREET, STE 600  
 WASHINGTON, DC 20006

**SITE DATA**  
 DEED REF: 46338/00161  
 MAP FL42, PARCEL P510  
 ELECTION DISTRICT 09  
 SITE ACREAGE: ±17 AC.

*Michael J. Finley*  
 MD DNR APPROVED QUALIFIED PROFESSIONAL

**Bloom MV Area IV**  
**NATURAL RESOURCE INVENTORY / FOREST STAND DELINEATION PLAN**  
 19550 MONTGOMERY VILLAGE AVE, GAITHERSBURG, MD 20879

RECEIVED M-NCPPC  
 APR 03 2015  
 MONTGOMERY COUNTY PLANNING DEPARTMENT

**Ecotone Inc.**  
 FORESTS • WETLANDS • RIVERS • WILDLIFE

2120 High Point Road • Forest Hill, Maryland 21050  
 (410) 420 2600 • Fax (410) 420 6983 • www.ecotoneinc.com

**REVISIONS**

NO.	DATE	DESCRIPTION	REV. BY
1	4-2-15	PER M-NCPPC COMMENTS	SFM

PROJECT MANAGER: JRM  
 DESIGNED: SFM  
 DRAWN: CRH  
 PROJECT No.: 1508  
 DATE: 4/2/2015  
 SHEET: 1 of 1