

VKA
ENGINEERS PLANNERS
LANDSCAPE ARCHITECTS SURVEYORS
VKA MARYLAND, LLC
20251 CENTURY BOULEVARD SUITE #400
GERMANTOWN, MARYLAND 20874
PHONE: 301.916.4100
FAX: 301.916.2362
GERMANTOWN, MD. 17626S, VA.

PREPARED FOR:
USL2 MR
MONTGOMERY VILLAGE BUSINESS TRUST
c/o MONUMENT REALTY
1700 K Street, NW, Suite 600,
Washington, DC 20006
202.777.2010
RUSSELL HINES

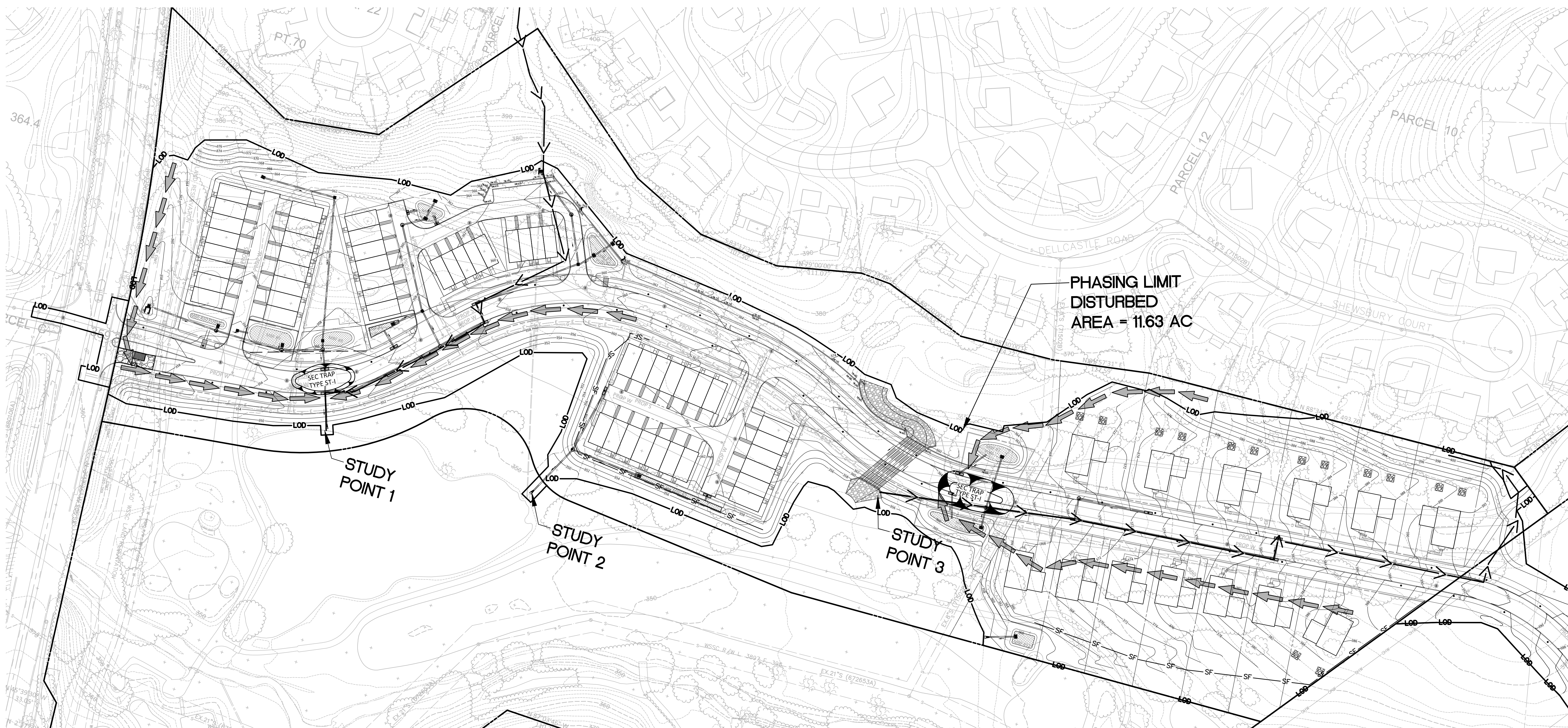
DESIGN CONSULTANTS

ARCHITECTS
TORTI GALLAS AND PARTNERS, INC
1300 Spring Street, Suite 400
Silver Spring, Maryland 20910
301.588.4800
ERIK J. ALLESTIA

ATTORNEY
LERCH, EARLY, & BREWER
3 Bethesda Metro Center
Suite 460
Bethesda, MD 20814
301.841.3532
PATRICIA HARRIS

TRAFFIC ENGINEER
WELLS + ASSOCIATES
8730 Georgia Avenue, Suite 200
Silver Spring, MD 20910
301.448.1333
KEVIN BERGER

CIVIL ENGINEER &
LANDSCAPE ARCHITECT
VKA MARYLAND, LLC
20251 CENTURY BOULEVARD
SUITE 400
GERMANTOWN MD, 20874
301.916.4100
JEFFREY AMATEAU



REVISIONS	DATE
DRC COMMENTS	3/3/17

PROFESSIONAL SEAL

BLOOM MV AREAS I-VI
9TH ELECTION DISTRICT
MONTGOMERY COUNTY,
MARYLAND
WSSC GRID: 227NW09.10 &
226NW09
TAX MAP: FU341, 342, 343
PP # 120170150

SEDIMENT & EROSION CONTROL PLAN AREA II

DRAWN BY: TG
DESIGNED BY: WDR
DATE ISSUED: FEB. 21, 2017
VKA PROJECT: VM1920

SHEET NO. SC-3

SEDIMENT CONTROL LEGEND

