

ENGINEERS PLANNERS
LANDSCAPE ARCHITECTS SURVEYORS
VIA MARYLAND, LLC
20551 CENTURY BOULEVARD, SUITE 400
GERMANTOWN, MARYLAND 20874
PHONE: 301.916.4100
FAX: 301.916.2252
GERMANTOWN, MD, TYSONS, VA.

PREPARED FOR:
**USL2 MR
MONTGOMERY VILLAGE
BUSINESS TRUST
c/o MONUMENT REALTY**
1700 K Street, NW, Suite 600,
Washington, DC 20006
202.777.2010
RUSSELL HINES

DESIGN CONSULTANTS

ARCHITECTS
**FORTI GALLAS AND
PARTNERS, INC**
1300 Spring Street, Suite 400
Silver Spring, Maryland 20910
301.588.6000
ERIK J. AULESTIA

ATTORNEY
LERCH, EARLY, & BREWER
3 Bethesda Metro Center
Suite 400
Bethesda, MD 20814
301.841.3832
PATRICIA HARRIS

TRAFFIC ENGINEER
WELLS + ASSOCIATES
8730 Georgia Avenue, Suite 200
Silver Spring, MD 20910
301.448.1333
KEVIN BERGER

CIVIL ENGINEER &
LANDSCAPE ARCHITECT
VIA MARYLAND, LLC
20551 CENTURY BOULEVARD
SUITE 400
GERMANTOWN, MD 20874
301.916.4100
JEFFREY AMATEAU

REVISIONS	DATE
DRC COMMENTS	6/2/17
DRC COMMENTS	8/9/17

PROFESSIONAL SEAL

**BLOOM MV
AREAS I-VI**

9TH ELECTION DISTRICT
MONTGOMERY COUNTY,
MARYLAND
WSSC GRID: 227NW09.10 &
226NW09
TAX MAP: FU341, 342, 343

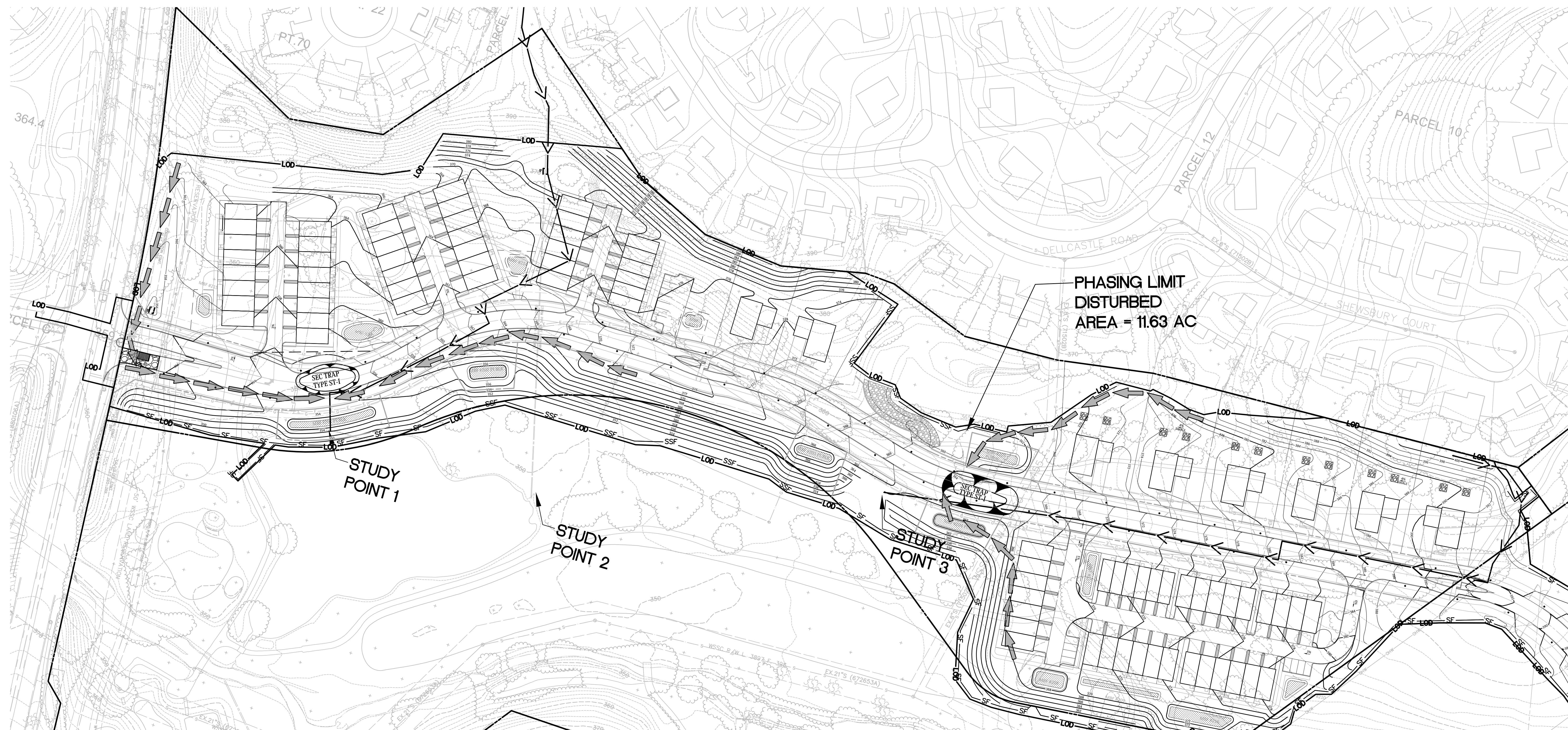
PP # 120170150

**SEDIMENT &
EROSION
CONTROL PLAN
AREA II**

DRAWN BY: TC
DESIGNED BY: WDR
DATE ISSUED: AUGUST, 2017

VKA
PROJECT VM1920

SHEET NO. SC-3



SEDIMENT CONTROL LEGEND

