

VIA
 ENGINEERS PLANNERS ARCHITECTS SURVEYORS
 LANDSCAPE ARCHITECTS SURVEYORS
 VIA MARYLAND, LLC
 20251 CENTURY BOULEVARD SUITE 400
 GERMANTOWN, MARYLAND 20874
 PHONE: 301.916.4100
 FAX: 301.916.2222
 GERMANTOWN, MD. TYSONS, VA.

PREPARED FOR:
USL2 MR MONTGOMERY VILLAGE BUSINESS TRUST
 c/o MONUMENT REALTY
 1700 K Street, NW, Suite 600,
 Washington, DC 20006
 202.777.2010
 RUSSELL HINES

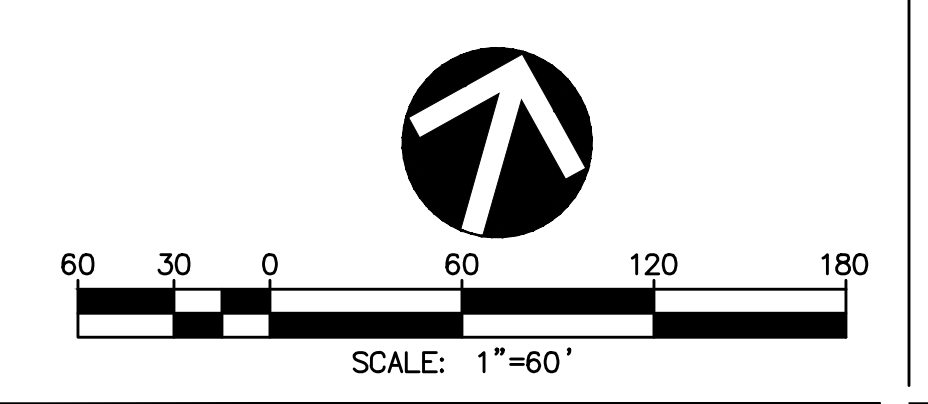
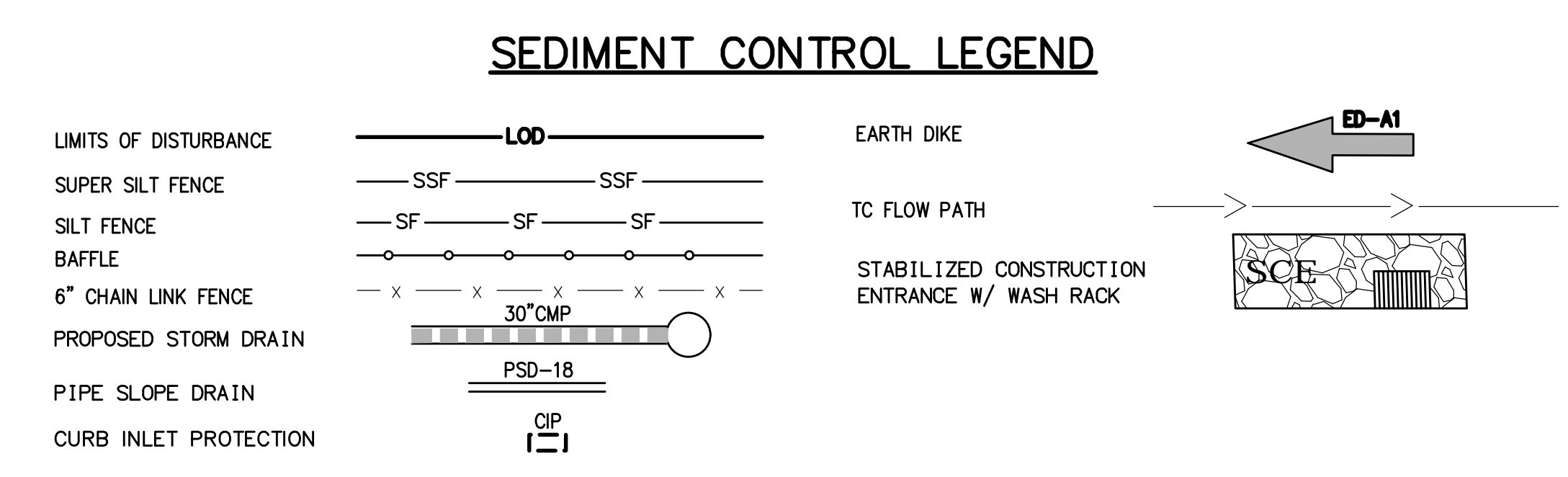
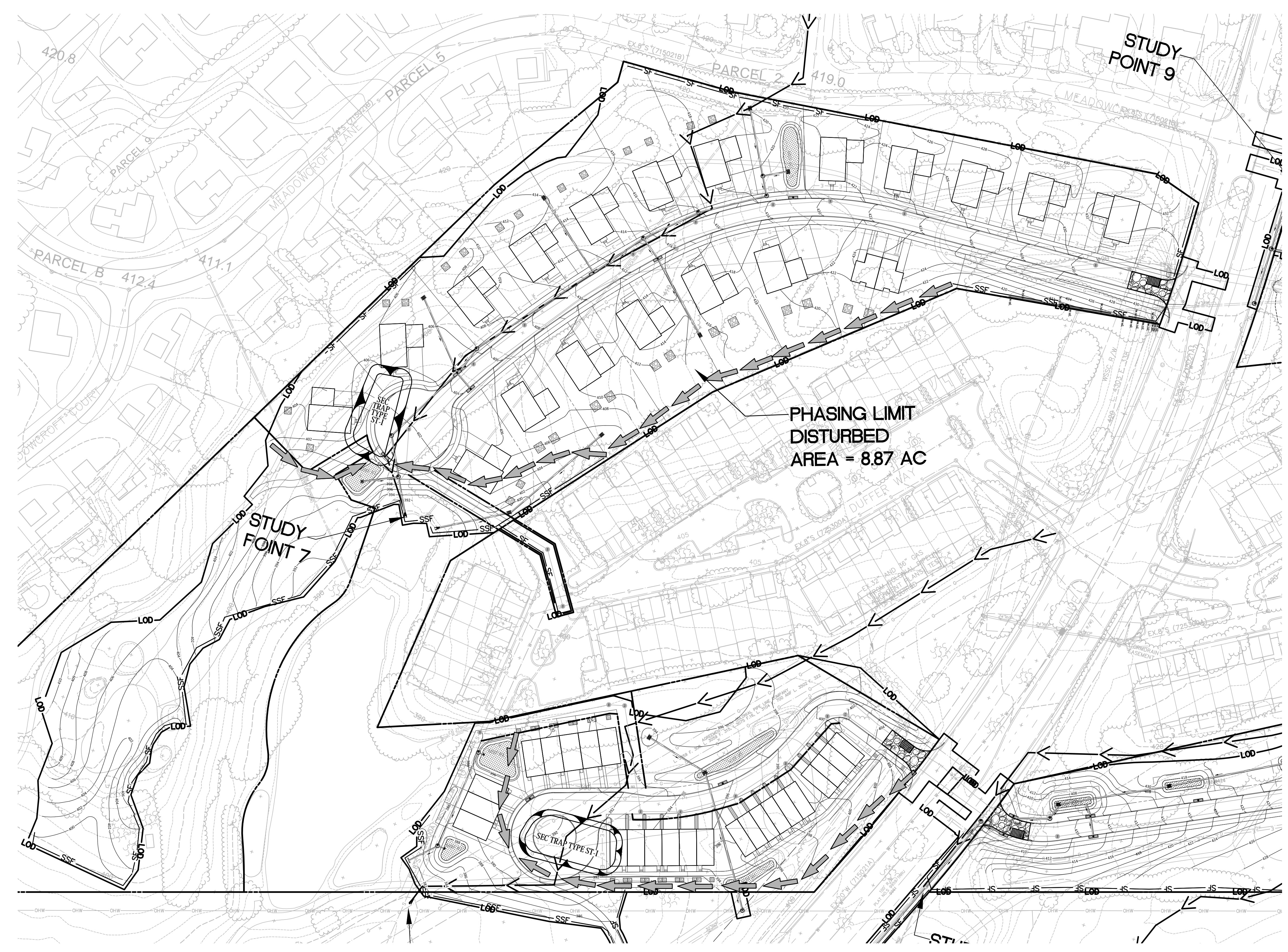
DESIGN CONSULTANTS

ARCHITECTS
FORTI GALLAS AND PARTNERS, INC
 1300 Spring Street, Suite 400
 Silver Spring, Maryland 20910
 301.588.6800
 ERIK J. AULESTIA

ATTORNEY
LERCH, EARLY, & BREWER
 3 Bethesda Metro Center
 Suite 400
 Bethesda, MD 20814
 301.841.3832
 PATRICIA HARRIS

TRAFFIC ENGINEER
WELLS + ASSOCIATES
 8730 Georgia Avenue, Suite 200
 Silver Spring, MD 20910
 301.448.1333
 KEVIN BERGER

CIVIL ENGINEER & LANDSCAPE ARCHITECT
VIA MARYLAND, LLC
 20251 CENTURY BOULEVARD
 SUITE 400
 GERMANTOWN, MD. 20874
 301.916.4100
 JEFFREY AMATEAU



REVISIONS	DATE
DRC COMMENTS	6/2/17
DRC COMMENTS	8/9/17

PROFESSIONAL SEAL

BLOOM MV AREAS I-VI
 9TH ELECTION DISTRICT
 MONTGOMERY COUNTY, MARYLAND
 WSSC GRID: 227NW09.10 & 226NW09
 TAX MAP: FU341, 342, 343
PP # 120170150

SEDIMENT & EROSION CONTROL PLAN AREA III

DRAWN BY: TG
 DESIGNED BY: WDR
 DATE ISSUED: AUGUST, 2017

VIA PROJECT VM1920

SHEET NO. SC-4