

VICINITY MAP  
SCALE: 1" = 2000'



20251 CENTURY BOULEVARD SUITE 400  
GERMANTOWN, MARYLAND 20874  
PHONE: 301.916.4100  
FAX: 301.916.2262  
GERMANTOWN, MD. TSONS, VA.

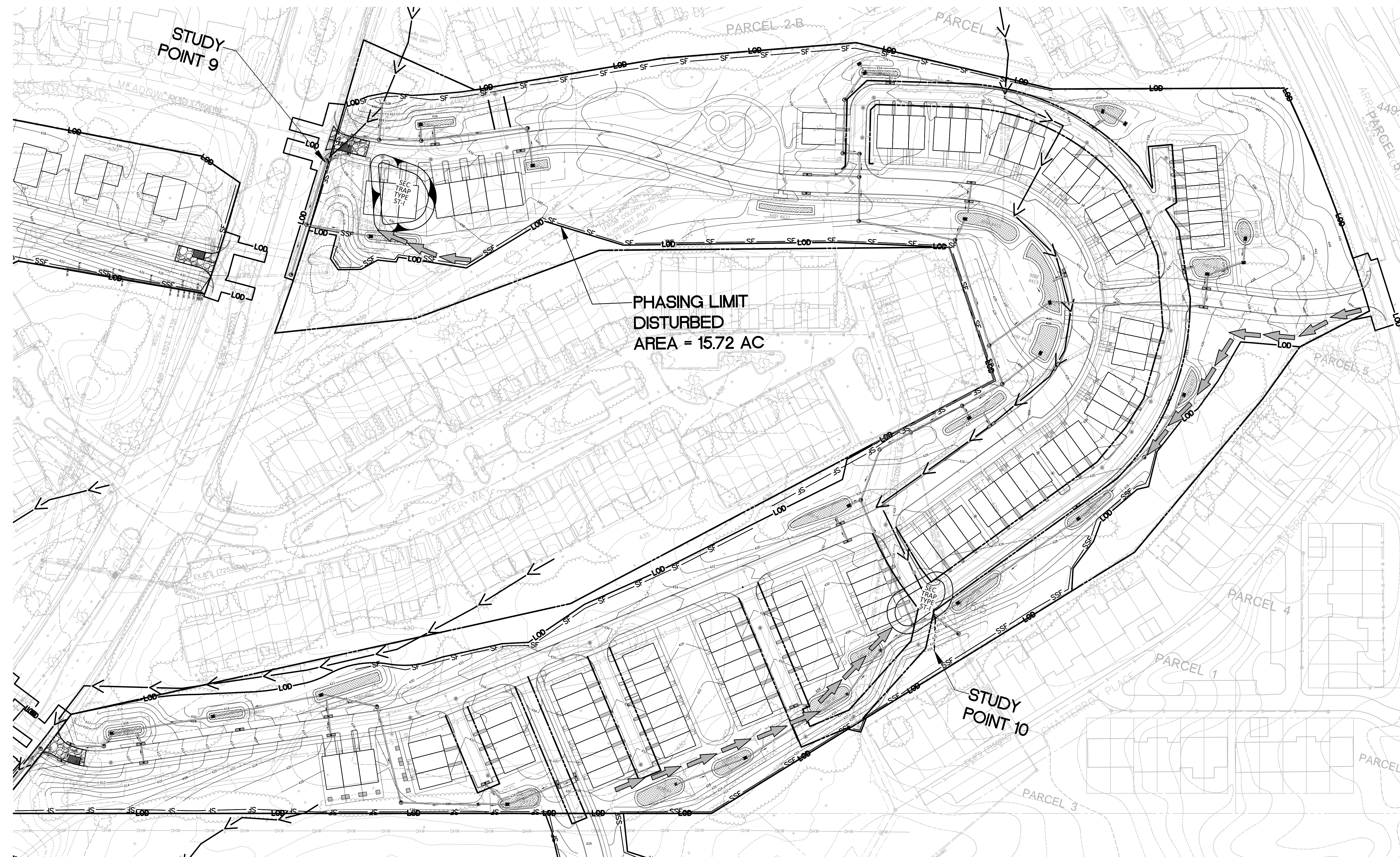
PREPARED FOR:  
USL2 MR  
MONTGOMERY VILLAGE  
BUSINESS TRUST  
c/o MONUMENT REALTY  
1700 K Street, NW, Suite 600,  
Washington, DC 20006  
202.777.2010  
RUSSELL HINES

DESIGN CONSULTANTS  
ARCHITECTS  
TORTI GALLAS AND  
PARTNERS, INC  
1300 Spring Street, Suite 400  
Silver Spring, Maryland 20910  
301.588.4800  
ERIK J. ALLESTIA

ATTORNEY  
LECHT, EARLY, & BREWER  
3 Bethesda Metro Center  
Suite 460  
Bethesda, MD 20814  
301.842.3832  
PATRICIA HARRIS

TRAFFIC ENGINEER &  
LANDSCAPE ARCHITECT  
WELLS + ASSOCIATES  
8730 Georgia Avenue, Suite 200  
Silver Spring, MD 20910  
301.448.1323  
KEVIN BERGER

CIVIL ENGINEER &  
LANDSCAPE ARCHITECT  
VKA MARYLAND, LLC  
20251 CENTURY BOULEVARD  
SUITE 400  
GERMANTOWN MD. 20874  
301.916.4100  
JEFFREY AMATEAU



REVISIONS	DATE
DRC COMMENTS	6/2/17
DRC COMMENTS	8/9/17

PROFESSIONAL SEAL

BLOOM MV  
AREAS I-VI  
9TH ELECTION DISTRICT  
MONTGOMERY COUNTY,  
MARYLAND  
WSSC GRID: 227NW09.10 &  
226NW09  
TAX MAP: FU341, 342, 343  
PP # 120170150

SEDIMENT &  
EROSION  
CONTROL PLAN  
AREA IV

DRAWN BY: TG  
DESIGNED BY: WDR  
DATE ISSUED: AUGUST, 2017  
VKA PROJECT VM1920

**SEDIMENT CONTROL LEGEND**

LIMITS OF DISTURBANCE SSSF ——— SSSF	— L ———	EARTH DIKE — ED-A1 ———
SUPER SILT FENCE — SF ——— SF	— TC ——— TC	TC FLOW PATH —> —> —>
SILT FENCE	— SF ——— SF	STABILIZED CONSTRUCTION ENTRANCE W/ WASH RACK 
BAFFLE — X ——— X	30' CMP	
6" CHAIN LINK FENCE — X ——— X	PSD-18	
PROPOSED STORM DRAIN — PSD ——— PSD	CIP   ———	
PIPE SLOPE DRAIN — PSD ——— PSD		
CURB INLET PROTECTION — CIP ——— CIP		

