

VICINITY MAP
SCALE: 1" = 2000'



PREPARED FOR:
USL2 MR
MONTGOMERY VILLAGE
BUSINESS TRUST
c/o MONUMENT REALTY
1700 K Street, NW, Suite 600,
Washington, DC 20006
202.777.2010
RUSSELL HINES

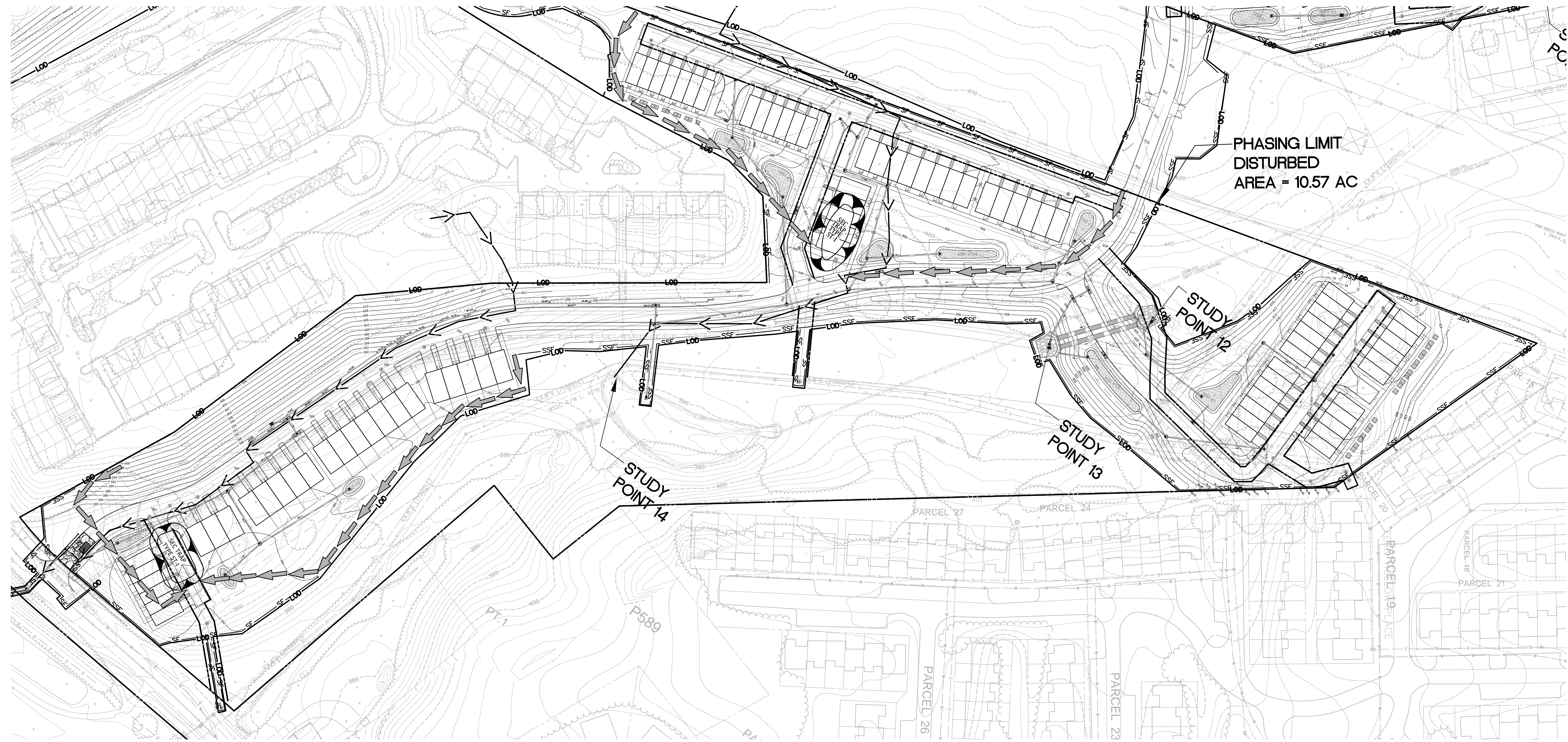
DESIGN CONSULTANTS

ARCHITECTS
TORTI GALLAS AND
PARTNERS, INC.
1300 Spring Street, Suite 400
Silver Spring, Maryland 20910
301.588.4800
ERIK J. ALLESTIA

ATTORNEY
LECHT, EARLY, & BREWER
3 Bethesda Metro Center
Suite 460
Bethesda, MD 20814
301.841.2832
PATRICIA HARRIS

TRAFFIC ENGINEER
WELLS - ASSOCIATES
8730 Georgia Avenue, Suite 200
Silver Spring, MD 20910
301.446.1235
KEVIN BERGER

CIVIL ENGINEER &
LANDSCAPE ARCHITECT
VKA MARYLAND, LLC
20251 CENTURY BOULEVARD
SUITE 400
GERMANTOWN MD. 20874
301.916.4100
JEFFREY ANATEAU



REVISIONS	DATE
DRC COMMENTS	6/2/17
DRC COMMENTS	8/9/17

PROFESSIONAL SEAL

**BLOOM MV
AREAS I-VI**
9TH ELECTION DISTRICT
MONTGOMERY COUNTY,
MARYLAND
WSSC GRID: 227NW09.10 &
226NW09
TAX MAP: FU341, 342, 343

PP # 120170150

**SEDIMENT &
EROSION
CONTROL PLAN
AREA V**

DRAWN BY: TG
DESIGNED BY: WDR
DATE ISSUED: AUGUST, 2017
VKA PROJECT VM1920

SHEET NO. SC-6

SEDIMENT CONTROL LEGEND

