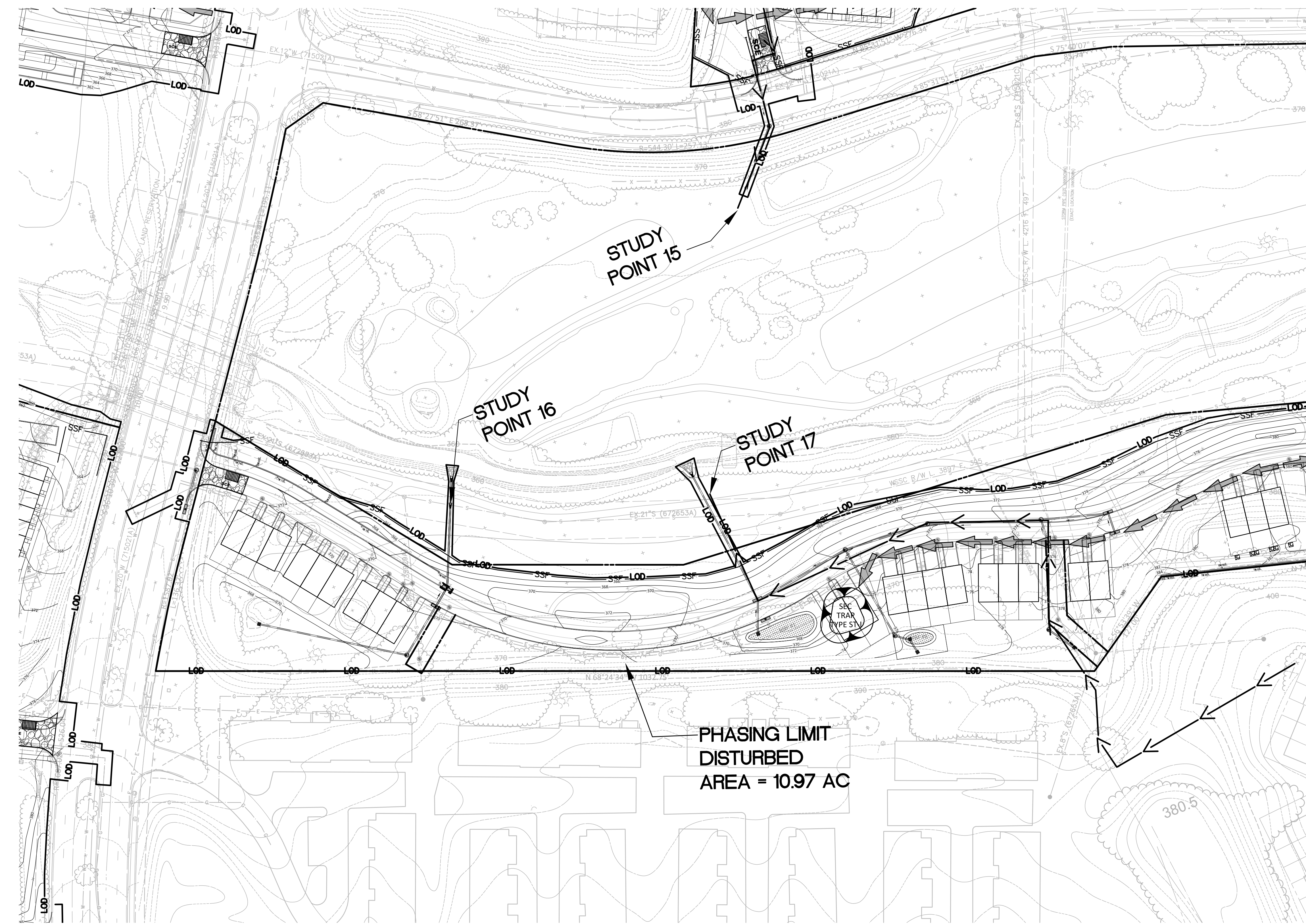


VICINITY MAP
SCALE: 1" = 2000'



REVISIONS	DATE
DRC COMMENTS	3/3/17

PROFESSIONAL SEAL

BLOOM MV
AREAS I-VI
9TH ELECTION DISTRICT
MONTGOMERY COUNTY,
MARYLAND
WSSC GRID: 227NW09.10 &
226NW09
TAX MAP: FU341, 342, 343
PP # 120170150

**SEDIMENT &
EROSION
CONTROL PLAN
AREA VI**

DRAWN BY: TG
DESIGNED BY: WDR
DATE ISSUED: FEB. 21, 2017
VKA
PROJECT: VM1920

SEDIMENT CONTROL LEGEND

LIMITS OF DISTURBANCE		EARTH DIKE	
SUPER SILT FENCE		TC FLOW PATH	
SILT FENCE		STABILIZED CONSTRUCTION ENTRANCE W/ WASH RACK	
BAFFLE			
6" CHAIN LINK FENCE			
PROPOSED STORM DRAIN			
PIPE SLOPE DRAIN			
CURB INLET PROTECTION			

