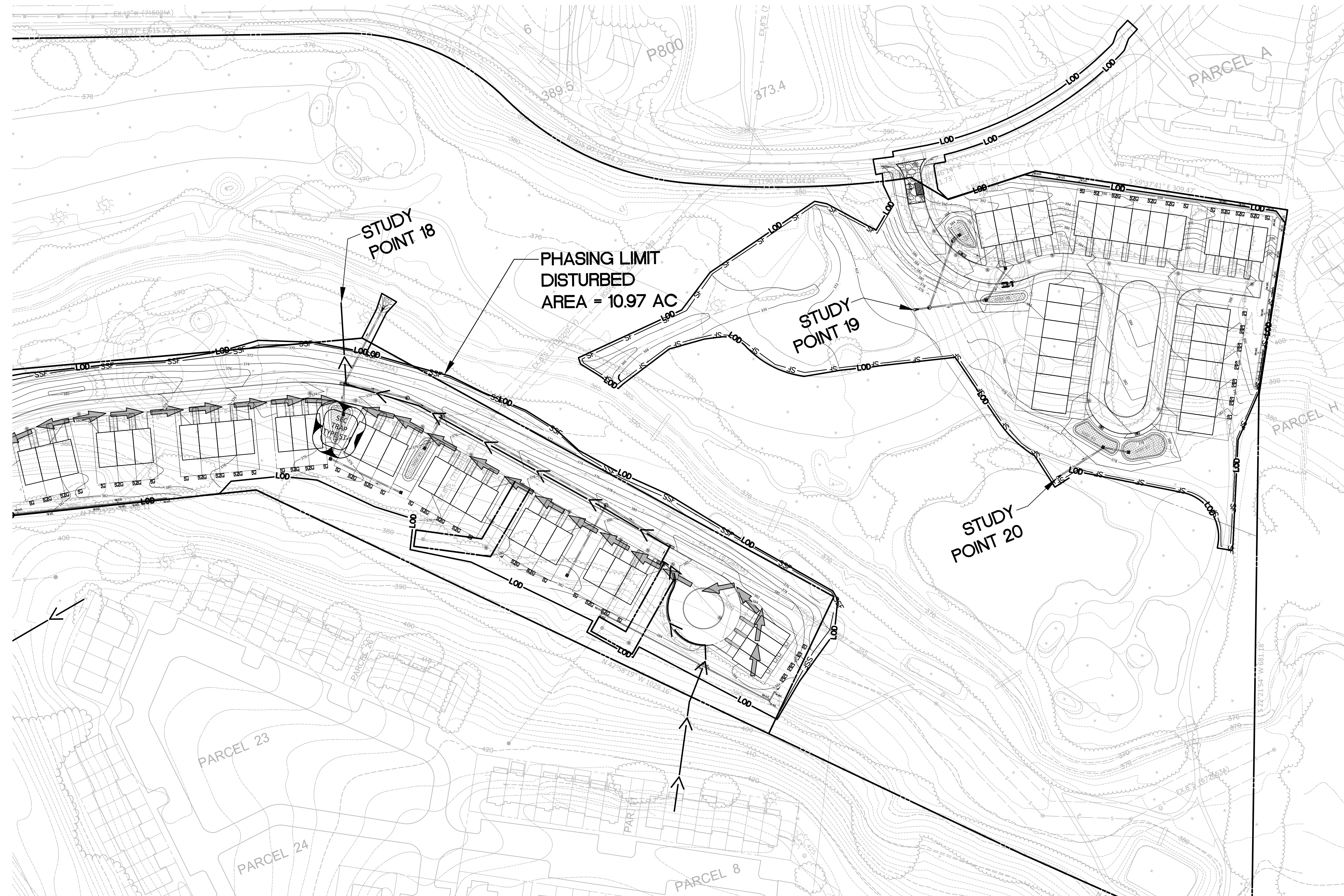


VICINITY MAP
 SCALE: 1" = 2000'



| REVISIONS | DATE |
|--------------|--------|
| DRC COMMENTS | 3/3/17 |
| | |
| | |
| | |
| | |
| | |
| | |
| | |
| | |
| | |
| | |
| | |
| | |

PROFESSIONAL SEAL



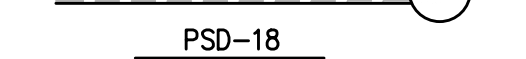

BLOOM MV
AREAS I-VI
 9TH ELECTION DISTRICT
 MONTGOMERY COUNTY,
 MARYLAND
 WSSC GRID: 227NW09.10 &
 226NW09
 TAX MAP: FU341, 342, 343

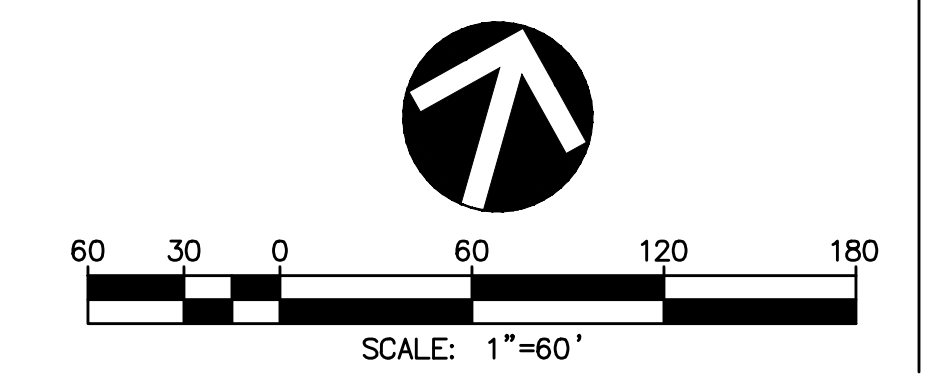
PP # 120170150

**SEDIMENT &
 EROSION
 CONTROL PLAN
 AREA VI**

DRAWN BY: TG
 DESIGNED BY: WDR
 DATE ISSUED: FEB. 21, 2017
 VIKA PROJECT: VM1920

SEDIMENT CONTROL LEGEND

- | | | | |
|-----------------------|---|---|--|
| LIMITS OF DISTURBANCE | — LOD — | EARTH DIKE | ← ED-A1 → |
| SUPER SILT FENCE | — SSF — SSF | TC FLOW PATH | → |
| SILT FENCE | — SF — SF | STABILIZED CONSTRUCTION ENTRANCE W/ WASH RACK |  |
| BAFFLE | — B — | | |
| 6" CHAIN LINK FENCE | — 6" CLF — | | |
| PROPOSED STORM DRAIN |  | | |
| PIPE SLOPE DRAIN |  | | |
| CURB INLET PROTECTION |  | | |



Z:\0000-9999\1000\CAD\STC\17\170150\170150-SC-8.dwg - Thursday, Nov 4, 2017 3:31:31 PM
 SHEET NO. SC-8