

VKA
 ENGINEERS PLANNERS
 LANDSCAPE ARCHITECTS SURVEYORS
 VIRA MARYLAND, LLC
 20251 CENTURY BOULEVARD SUITE 400
 GERMANTOWN, MARYLAND 20874
 PHONE: 301.916.4100
 FAX: 301.916.2262
 GERMANTOWN, MD. TSONS, VA.

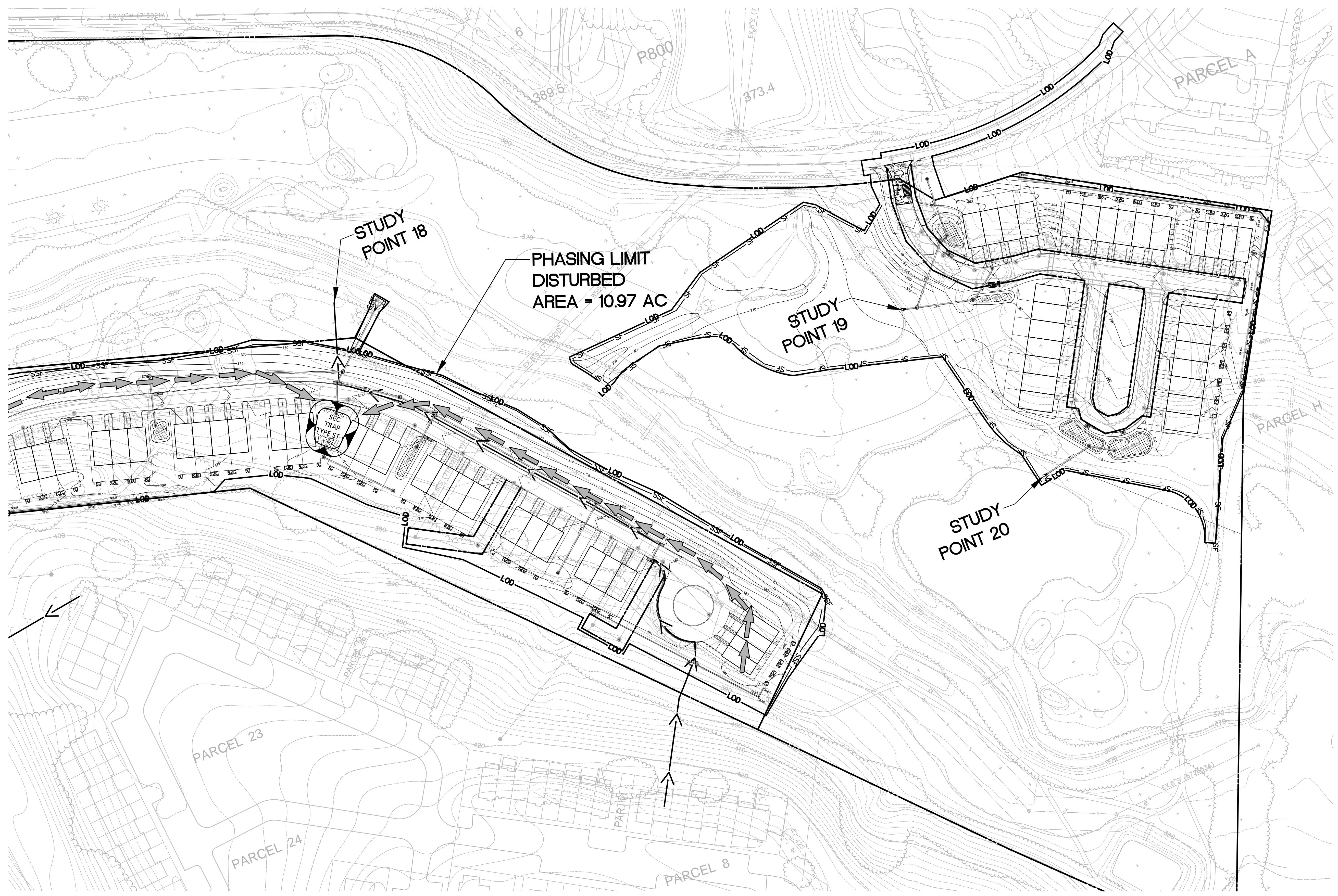
PREPARED FOR:
 USL2 MR
 MONTGOMERY VILLAGE
 BUSINESS TRUST
 c/o MONUMENT REALTY
 1700 K Street, NW, Suite 600,
 Washington, DC 20006
 202.777.2010
 RUSSELL HINES

DESIGN CONSULTANTS
 ARCHITECTS
TORTI GALLAS AND PARTNERS, INC
 1300 Spring Street, Suite 400
 Silver Spring, Maryland 20910
 301.588.4800
 ERIC J. ALLESTIA

ATTORNEY
LECHT, EARLY, & BREWER
 3 Bethesda Metro Center
 Suite 460
 Bethesda, MD 20814
 301.841.3832
 PATRICIA HARRIS

TRAFFIC ENGINEER
WELLS - ASSOCIATES
 8730 Georgia Avenue, Suite 200
 Silver Spring, MD 20910
 301.446.1333
 KEVIN BERGER

CIVIL ENGINEER &
 LANDSCAPE ARCHITECT
VKA MARYLAND, LLC
 20251 CENTURY BOULEVARD
 SUITE 400
 GERMANTOWN MD. 20874
 301.916.4100
 JEFFREY ANATEAU



REVISIONS	DATE
DRC COMMENTS	6/2/17
DRC COMMENTS	8/9/17

PROFESSIONAL SEAL

**BLOOM MV
 AREAS I-VI**
 9TH ELECTION DISTRICT
 MONTGOMERY COUNTY,
 MARYLAND
 WSSC GRID: 227NW09.10 &
 226NW09
 TAX MAP: FU341, 342, 343

PP # 120170150

**SEDIMENT &
 EROSION
 CONTROL PLAN
 AREA VI**

DRAWN BY: TG
 DESIGNED BY: WDR
 DATE ISSUED: AUGUST, 2017
 VIRA PROJECT VM1920

SHEET NO. SC-8

SEDIMENT CONTROL LEGEND

