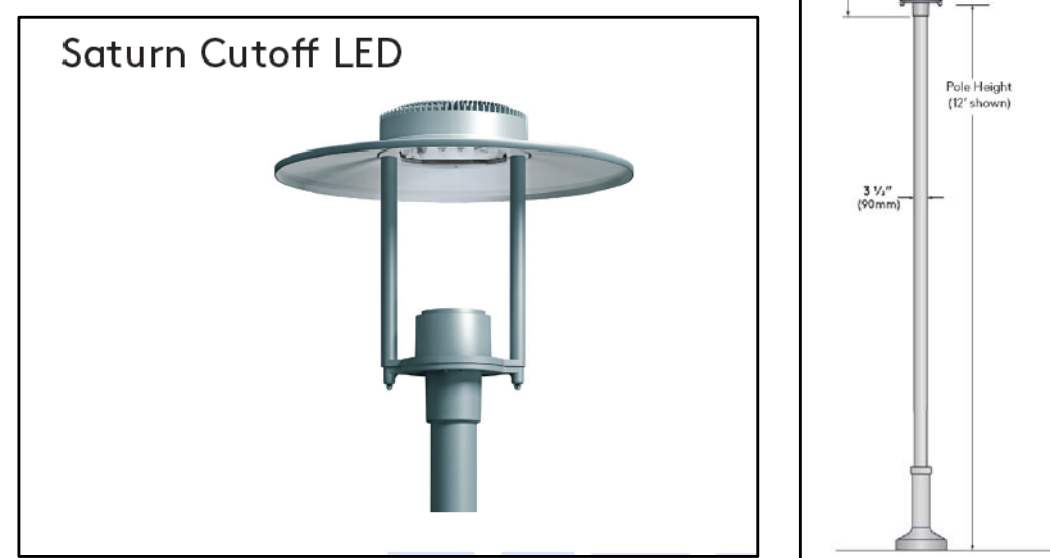
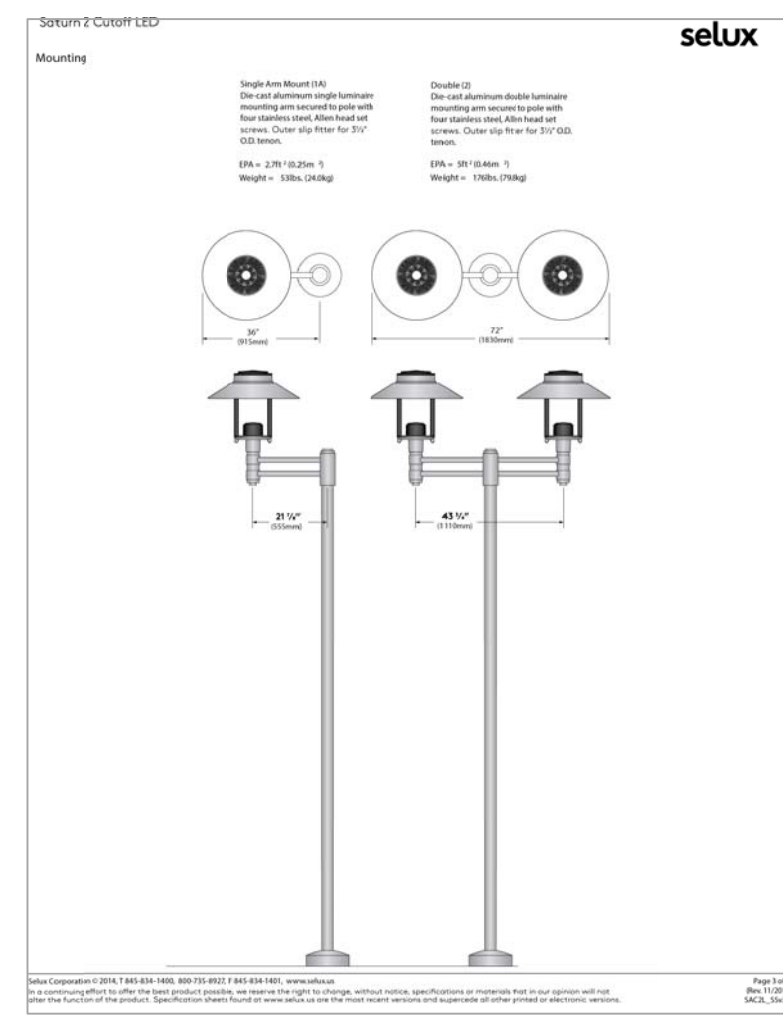


Selux Saturn 2 Cutoff LED
 Model: S426-1-RX-06
 Specifications:
 - Light Output: 2000 lumens
 - Voltage: 120V
 - Wattage: 30W
 - Color Temperature: 3000K
 - Beam Spread: 120°



SELUX
SATURN CUTOFF LED
 HEIGHT: 12'
 COLOR: BLACK
 QTY: 3

2 LIGHT FIXTURE
 NOT TO SCALE OR APPROVED EQUAL

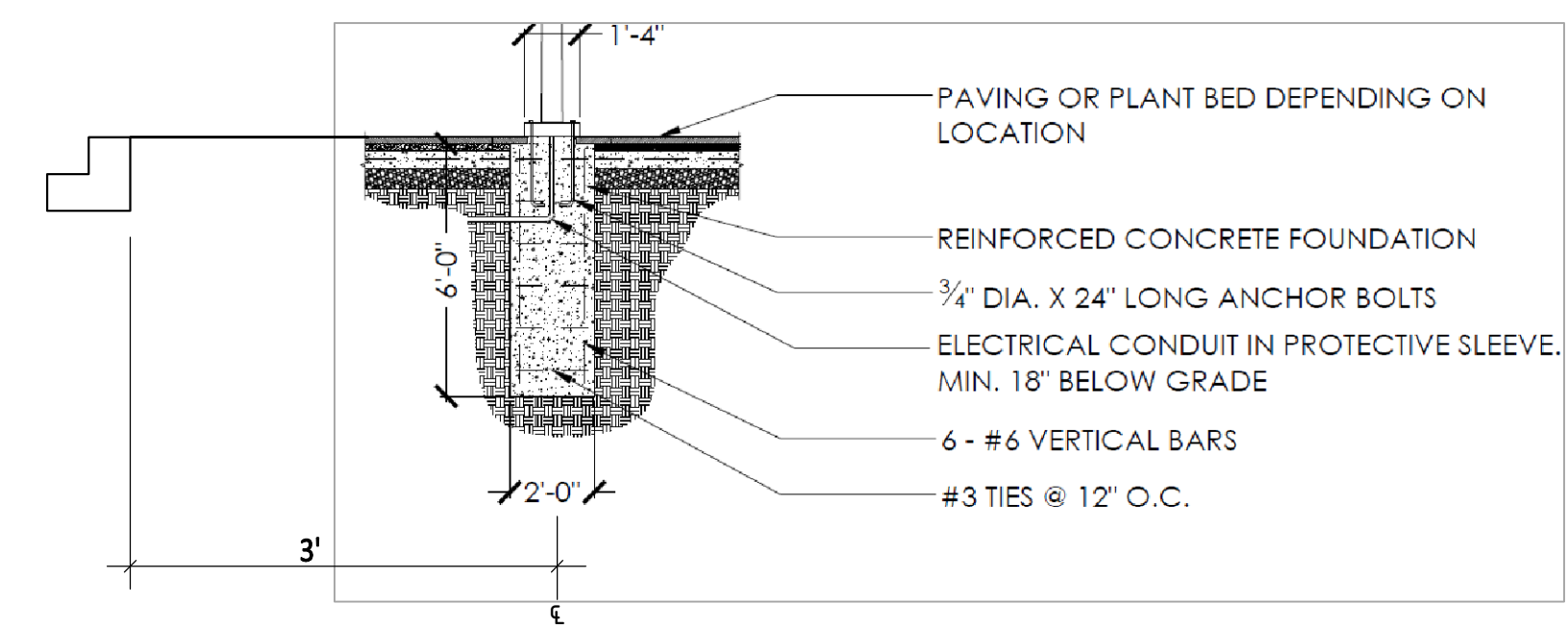


1 SATURN 2 CUTOFF LED LIGHT FIXTURE
 NOT TO SCALE OR APPROVED EQUAL



FORMS + SURFACES
LIGHT COLUMN BOLLARD
 MATERIAL: TUBULAR STAINLESS
 STEEL
 SIZE: 6" DIA.
 COLOR: BLACK
 QTY: XX

3 LIGHT BOLLARD
 NOT TO SCALE OR APPROVED EQUAL



4 POLE REINFORCED CONCRETE FOUNDATION
 SCALE: NTS OR APPROVED EQUAL

REVISIONS	DATE



I HEREBY CERTIFY THAT THESE DOCUMENTS WERE
 PREPARED OR APPROVED BY ME, AND THAT I AM DULY
 LICENSED, REGISTERED LANDSCAPE ARCHITECT UNDER
 THE LAWS OF THE STATE OF MARYLAND.
 NAME: JOSHUA SLOAN, P.L.A. A.S.A.
 LICENSE NUMBER: 1275
 EXPIRATION DATE: MAY 23, 2018

BLOOM MV
AREA I-VI
 9TH ELECTION DISTRICT
 MONTGOMERY COUNTY,
 MARYLAND
 WSSC GRID: 227NW09
 TAX MAP: FU342
SP# 820170130

PHOTOMETRIC
PLAN

LIGHTING
DETAILS

DRAWN BY: DLK
 DESIGNED BY: DLK-JS-SCM
 DATE ISSUED: May 5, 2017
VKA PROJECT VM1920
DRAWING NO.

SHEET NO. PM 300

DEVELOPER'S CERTIFICATE
 The undersigned agrees to execute all the features of the Site Plan Approval No. 820170130, including Approval Conditions, Development Program, and Certified Site Plan.
 Developer's Name: USL2 MR Montgomery Village Business Trust
 Contact Person: Russell Hines
 Address: 1200 K Street, NW, Suite 600, Washington, DC 20006
 Phone: 202.777.2010
 Signature: _____ Date: _____