

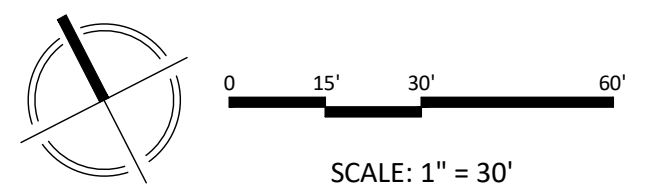
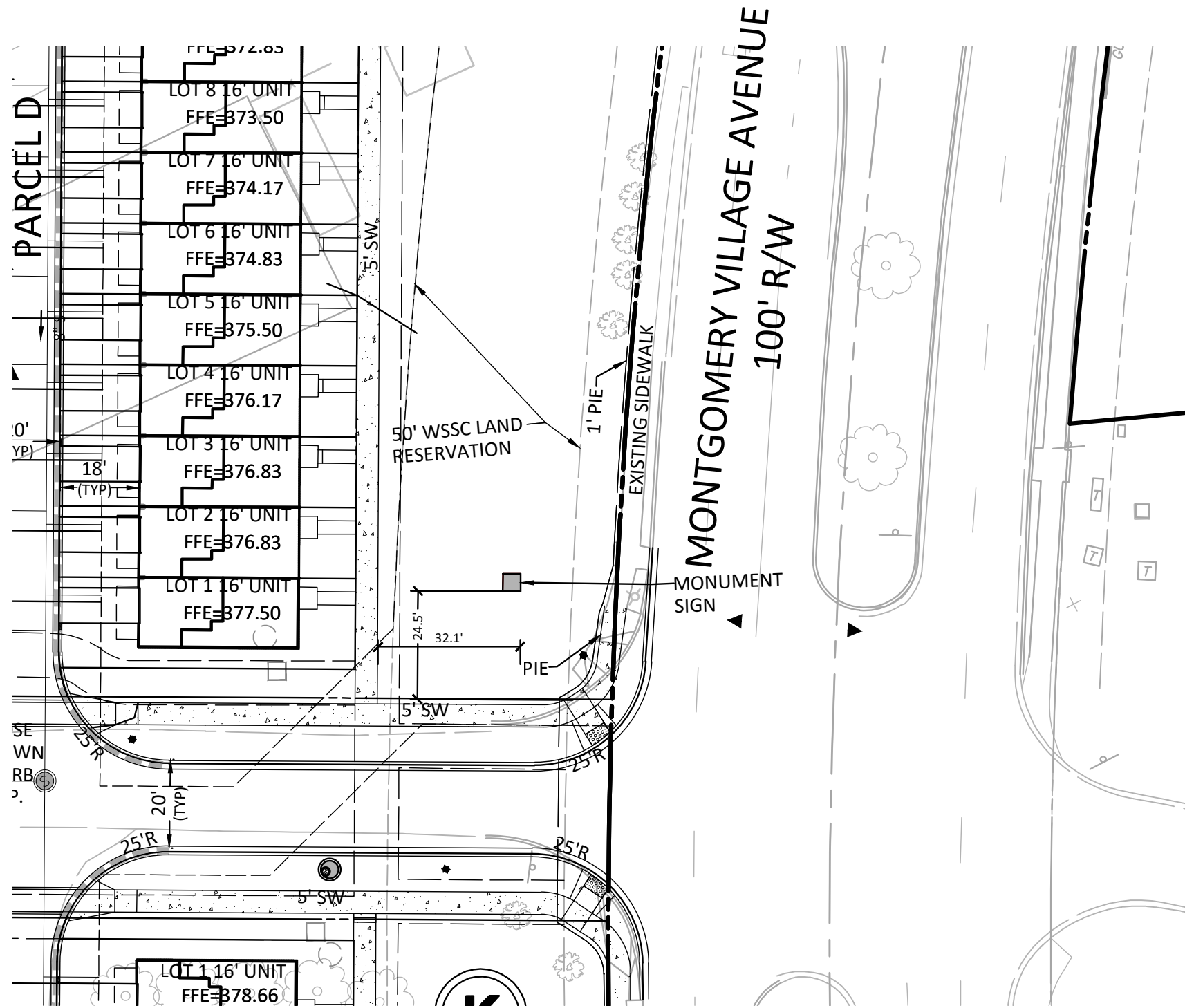
THE INFORMATION, DESIGN AND CONTENT OF THESE DRAWINGS OR DOCUMENTS ARE PROPRIETARY TO VIKA MARYLAND, LLC AND CONSTITUTE ITS PROPRIETARY INTELLECTUAL PROPERTY. THESE DRAWINGS AND/OR DOCUMENTS MUST NOT BE FORWARDED, SHARED, COPIED, DIGITALLY CONVERTED, MODIFIED OR USED FOR ANY PURPOSE, IN ANY FORMAT, WITHOUT PRIOR WRITTEN AUTHORIZATION FROM VIKA MARYLAND, LLC. VIOLATIONS MAY RESULT IN PROSECUTION. ONLY APPROVED, SIGNED AND SEALED PLANS OR DRAWINGS MAY BE UTILIZED FOR CONSTRUCTION PURPOSES.
 © 2019 VIKA MARYLAND, LLC

MONUMENT SIGN LOCATION

BLOOM MV
 9TH ELECTION DISTRICT
 MONTGOMERY COUNTY, MARYLAND
 WSSC GRID: 227 NW 09 TAX MAP: FU342

AREA 1
SOUTHERN ENTRANCE

DRAWN BY:	LWA
DESIGNED BY:	JS
DATE ISSUED:	11/12/2021
PROJECT No.	VM 1920 W
SHEET No.	1



THE INFORMATION, DESIGN AND CONTENT OF THESE DRAWINGS OR DOCUMENTS ARE PROPRIETARY TO VIKA MARYLAND, LLC AND CONSTITUTE ITS PROPRIETARY INTELLECTUAL PROPERTY. THESE DRAWINGS AND/OR DOCUMENTS MUST NOT BE FORWARDED, SHARED, COPIED, DIGITALLY CONVERTED, MODIFIED OR USED FOR ANY PURPOSE, IN ANY FORMAT, WITHOUT PRIOR WRITTEN AUTHORIZATION FROM VIKA MARYLAND, LLC. VIOLATIONS MAY RESULT IN PROSECUTION. ONLY APPROVED, SIGNED AND SEALED PLANS OR DRAWINGS MAY BE UTILIZED FOR CONSTRUCTION PURPOSES.

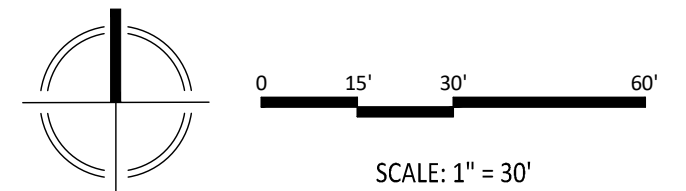
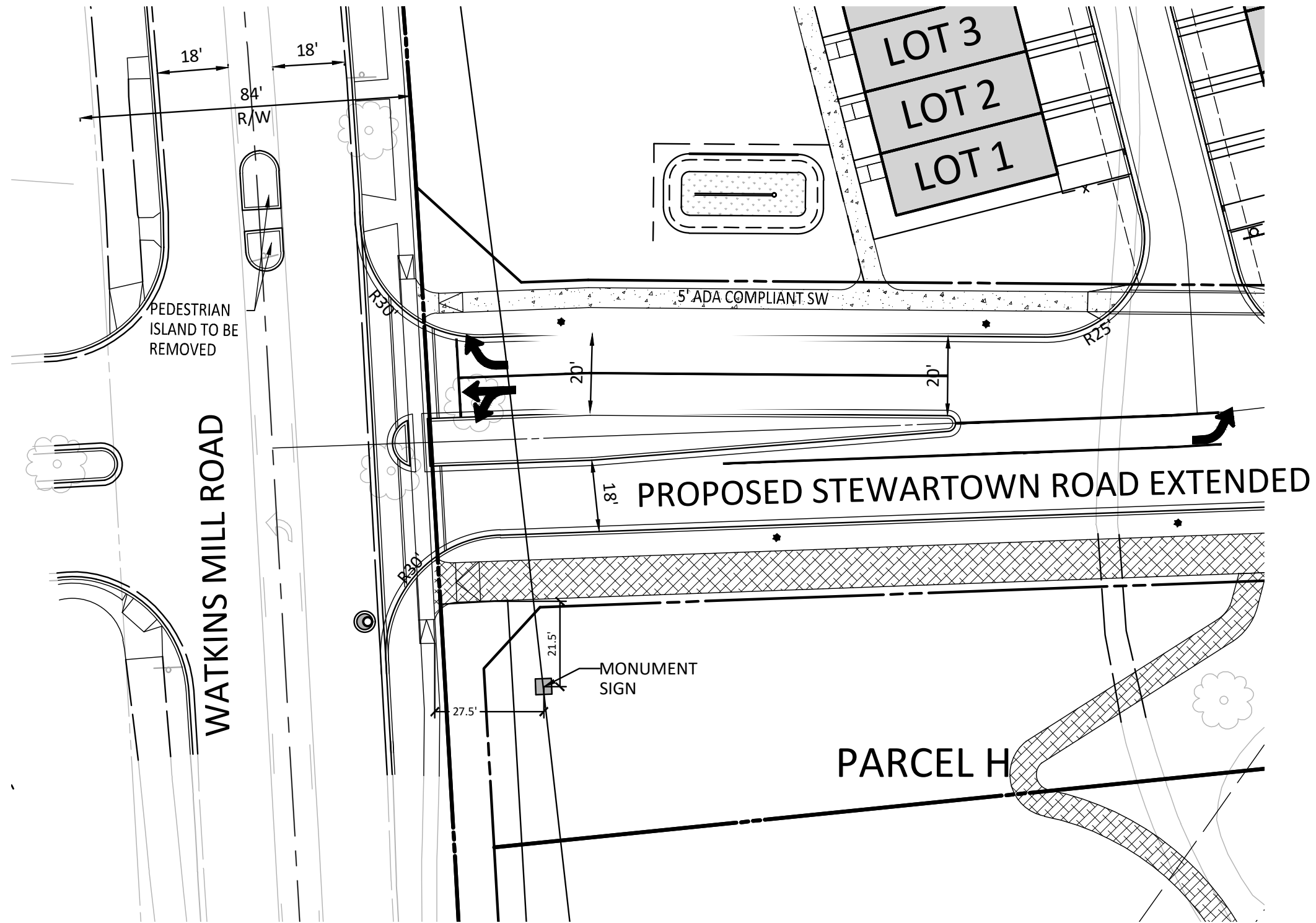
© 2019 VIKA MARYLAND, LLC

MONUMENT SIGN LOCATION

BLOOM MV
9TH ELECTION DISTRICT
MONTGOMERY COUNTY, MARYLAND
WSSC GRID: 227 NW 09 TAX MAP: FU342

AREA 1
NORTHERN ENTRANCE

DRAWN BY: LWA
DESIGNED BY: JS
DATE ISSUED: 11/12/2021
PROJECT No. VM 1920 W
SHEET No. 2



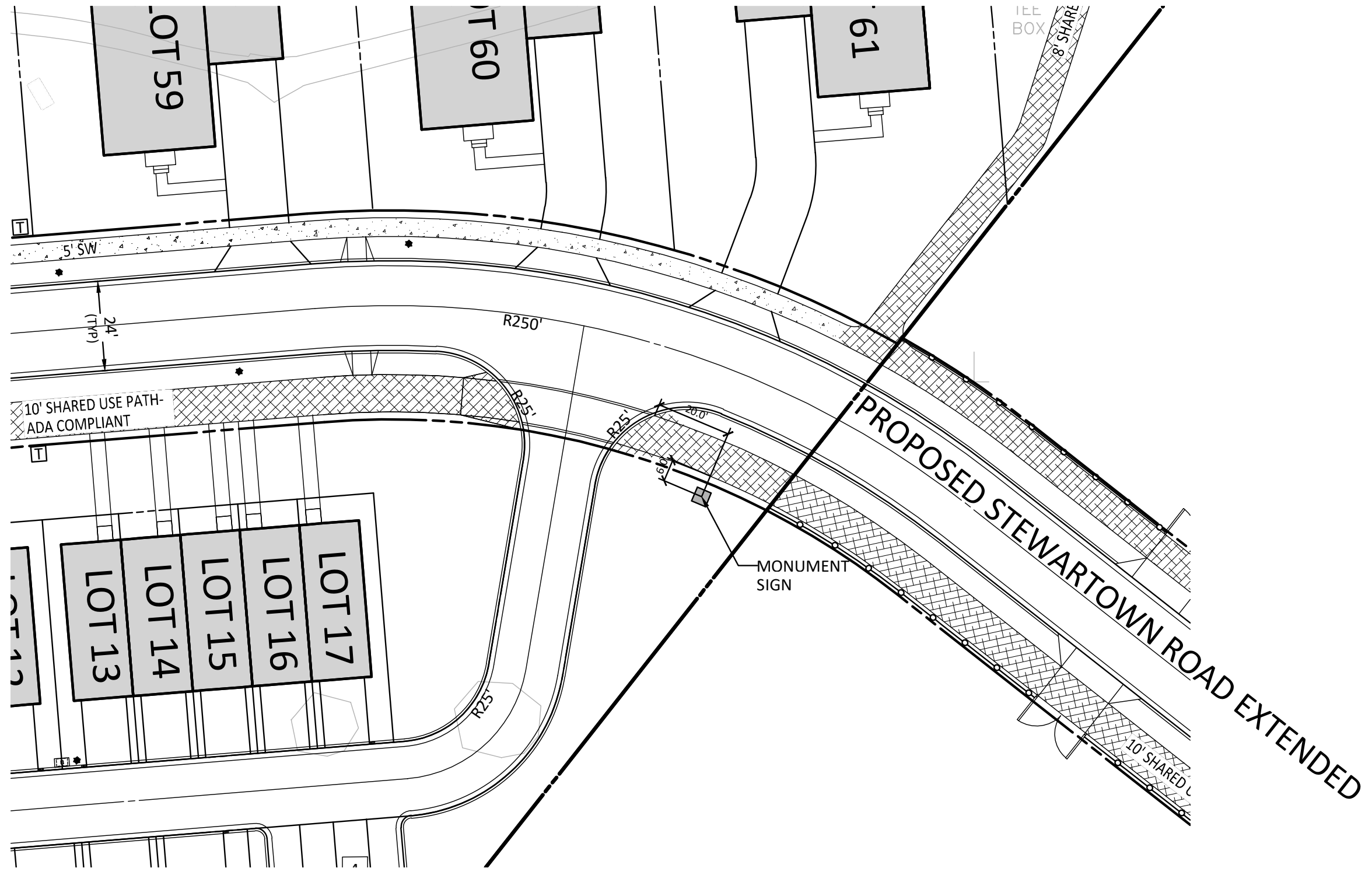
THE INFORMATION, DESIGN AND CONTENT OF THESE DRAWINGS OR DOCUMENTS ARE PROPRIETARY TO VIKA MARYLAND, LLC AND CONSTITUTE ITS PROPRIETARY INTELLECTUAL PROPERTY. THESE DRAWINGS AND/OR DOCUMENTS MUST NOT BE FORWARDED, SHARED, COPIED, DIGITALLY CONVERTED, MODIFIED OR USED FOR ANY PURPOSE, IN ANY FORMAT, WITHOUT PRIOR WRITTEN AUTHORIZATION FROM VIKA MARYLAND, LLC. VIOLATIONS MAY RESULT IN PROSECUTION. ONLY APPROVED, SIGNED AND SEALED PLANS OR DRAWINGS MAY BE UTILIZED FOR CONSTRUCTION PURPOSES.
 © 2019 VIKA MARYLAND, LLC

MONUMENT SIGN LOCATION

BLOOM MV
 9TH ELECTION DISTRICT
 MONTGOMERY COUNTY, MARYLAND
 WSSC GRID: 227 NW 09 TAX MAP: FU342

AREA 2
WESTERN ENTRANCE

DRAWN BY: LWA
 DESIGNED BY: JS
 DATE ISSUED: 11/12/2021
 PROJECT No. VM 1920 W
 SHEET No. 3



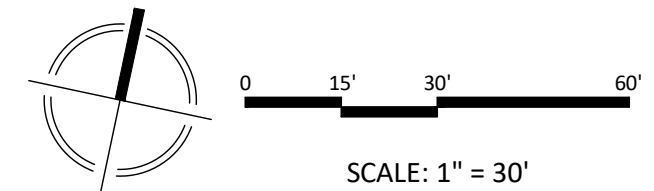
THE INFORMATION, DESIGN AND CONTENT OF THESE DRAWINGS OR DOCUMENTS ARE PROPRIETARY TO VIKI MARYLAND, LLC AND CONSTITUTE ITS PROPRIETARY INTELLECTUAL PROPERTY. THESE DRAWINGS AND/OR DOCUMENTS MUST NOT BE FORWARDED, SHARED, COPIED, DIGITALLY CONVERTED, MODIFIED OR USED FOR ANY PURPOSE, IN ANY FORMAT, WITHOUT PRIOR WRITTEN AUTHORIZATION FROM VIKI MARYLAND, LLC. VIOLATIONS MAY RESULT IN PROSECUTION. ONLY APPROVED, SIGNED AND SEALED PLANS OR DRAWINGS MAY BE UTILIZED FOR CONSTRUCTION PURPOSES.
 © 2019 VIKI MARYLAND, LLC

MONUMENT SIGN LOCATION

BLOOM MV
 9TH ELECTION DISTRICT
 MONTGOMERY COUNTY, MARYLAND
 WSSC GRID: 227 NW 09 TAX MAP: FU342

AREA 2
EASTERN ENTRANCE

DRAWN BY: LWA
 DESIGNED BY: JS
 DATE ISSUED: 11/12/2021
 PROJECT No. VM 1920 W
 SHEET No. 4



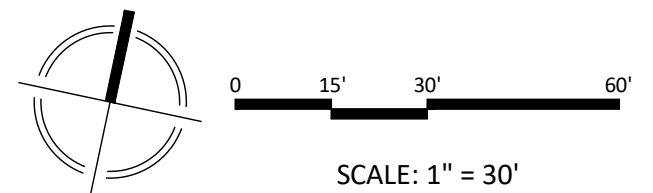
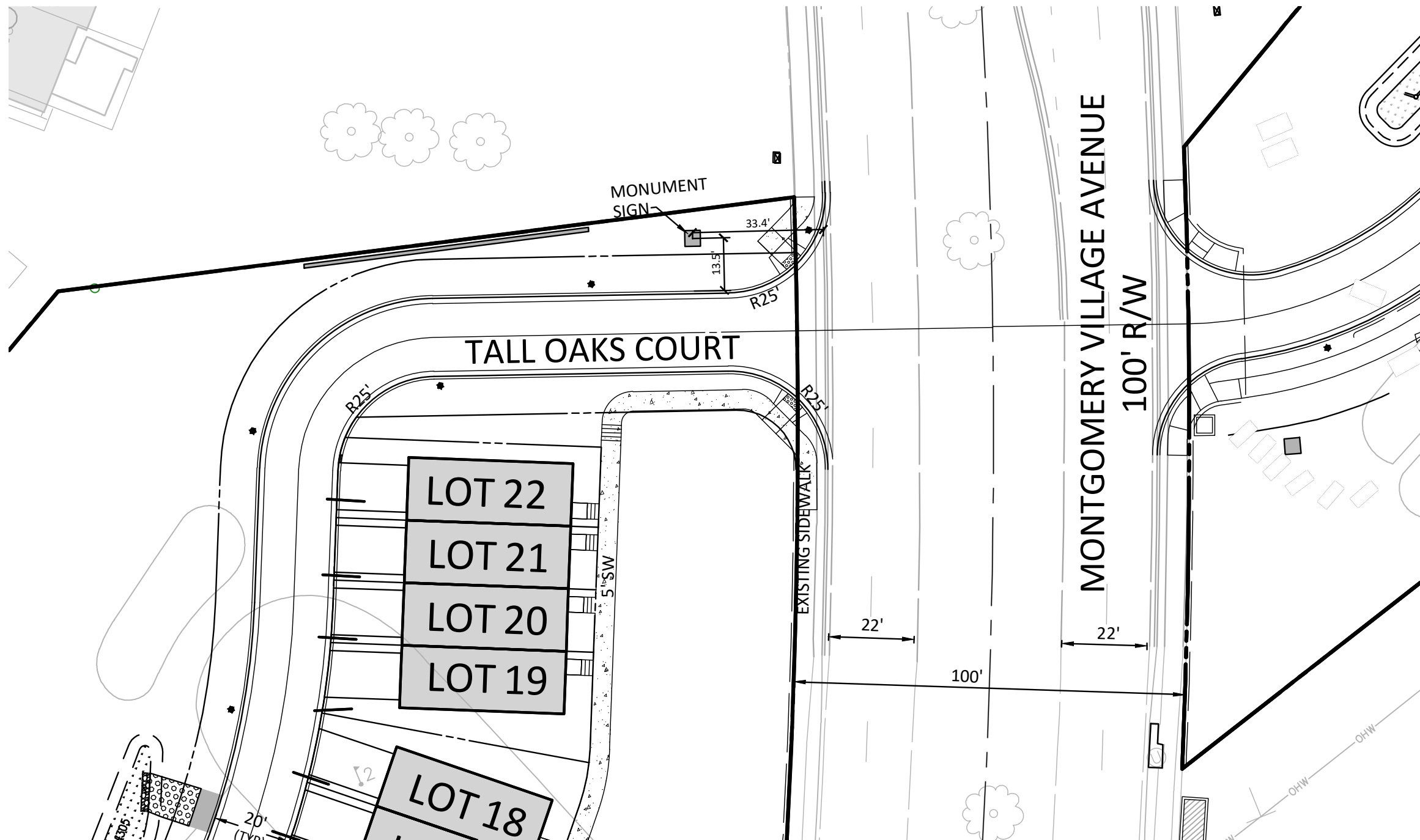
THE INFORMATION, DESIGN AND CONTENT OF THESE DRAWINGS OR DOCUMENTS ARE PROPRIETARY TO VIKA MARYLAND, LLC AND CONSTITUTE ITS PROPRIETARY INTELLECTUAL PROPERTY. THESE DRAWINGS AND/OR DOCUMENTS MUST NOT BE FORWARDED, SHARED, COPIED, DIGITALLY CONVERTED, MODIFIED OR USED FOR ANY PURPOSE, IN ANY FORMAT, WITHOUT PRIOR WRITTEN AUTHORIZATION FROM VIKA MARYLAND, LLC. VIOLATIONS MAY RESULT IN PROSECUTION. ONLY APPROVED, SIGNED AND SEALED PLANS OR DRAWINGS MAY BE UTILIZED FOR CONSTRUCTION PURPOSES.
 © 2019 VIKA MARYLAND, LLC

MONUMENT SIGN LOCATION

BLOOM MV
 9TH ELECTION DISTRICT
 MONTGOMERY COUNTY, MARYLAND
 WSSC GRID: 227 NW 09 TAX MAP: FU342

AREA 3B
SINGLE FAMILY ENTRANCE

DRAWN BY:	LWA
DESIGNED BY:	JS
DATE ISSUED:	11/12/2021
PROJECT No.	VM 1920 W
SHEET No.	5



THE INFORMATION, DESIGN AND CONTENT OF THESE DRAWINGS OR DOCUMENTS ARE PROPRIETARY TO VIKA MARYLAND, LLC AND CONSTITUTE ITS PROPRIETARY INTELLECTUAL PROPERTY. THESE DRAWINGS AND/OR DOCUMENTS MUST NOT BE FORWARDED, SHARED, COPIED, DIGITALLY CONVERTED, MODIFIED OR USED FOR ANY PURPOSE, IN ANY FORMAT, WITHOUT PRIOR WRITTEN AUTHORIZATION FROM VIKA MARYLAND, LLC. VIOLATIONS MAY RESULT IN PROSECUTION. ONLY APPROVED, SIGNED AND SEALED PLANS OR DRAWINGS MAY BE UTILIZED FOR CONSTRUCTION PURPOSES.

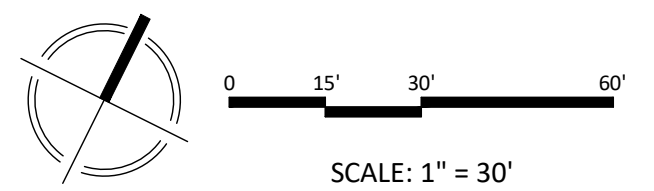
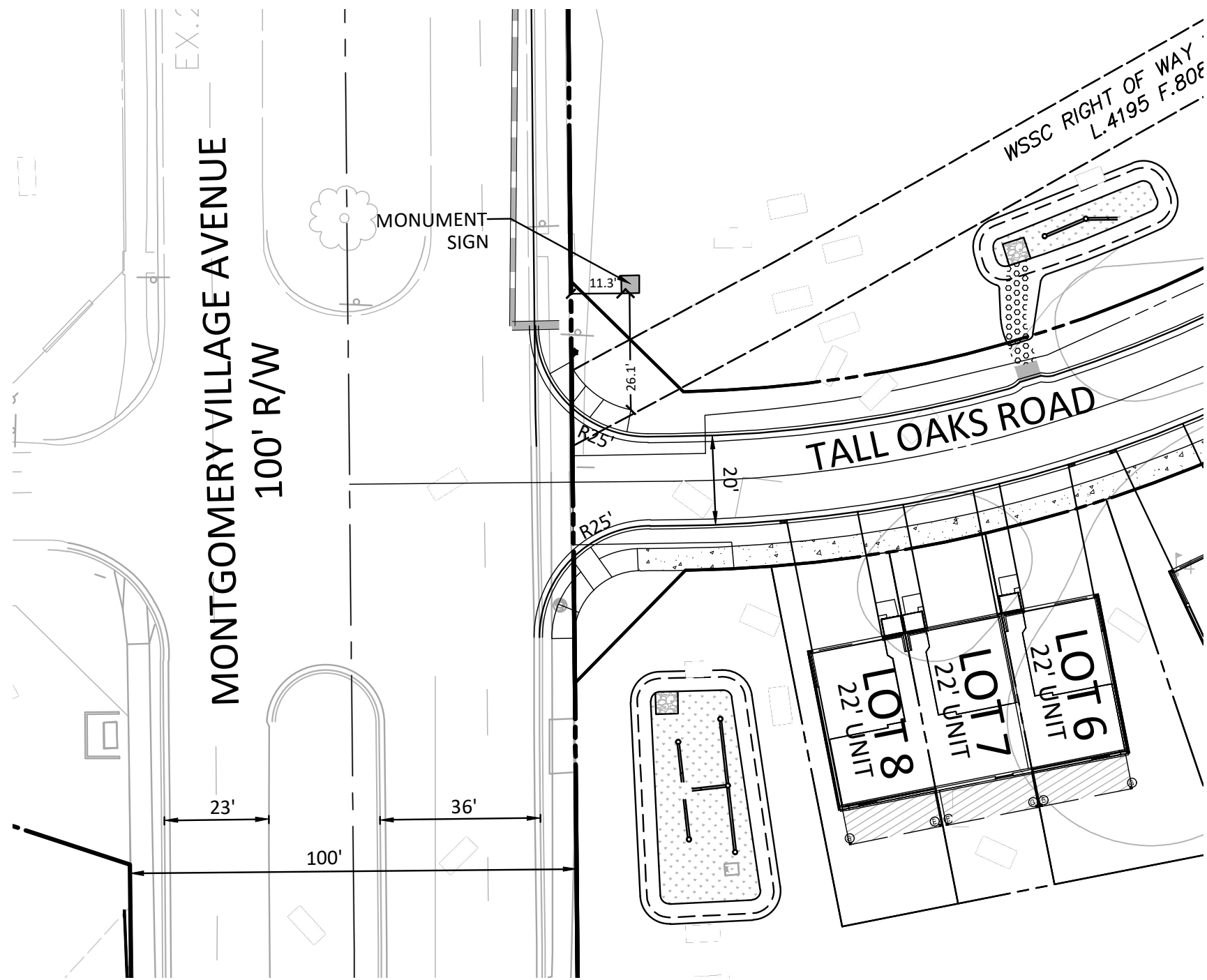
© 2019 VIKA MARYLAND, LLC

MONUMENT SIGN LOCATION

BLOOM MV
 9TH ELECTION DISTRICT
 MONTGOMERY COUNTY, MARYLAND
 WSSC GRID: 227 NW 09 TAX MAP: FU342

AREA 3A TOWNHOUSE ENTRANCE

DRAWN BY: LWA
 DESIGNED BY: JS
 DATE ISSUED: 11/12/2021
 PROJECT No. VM 1920 W
 SHEET No. 6



THE INFORMATION, DESIGN AND CONTENT OF THESE DRAWINGS OR DOCUMENTS ARE PROPRIETARY TO VIKA MARYLAND, LLC AND CONSTITUTE ITS PROPRIETARY INTELLECTUAL PROPERTY. THESE DRAWINGS AND/OR DOCUMENTS MUST NOT BE FORWARDED, SHARED, COPIED, DIGITALLY CONVERTED, MODIFIED OR USED FOR ANY PURPOSE, IN ANY FORMAT, WITHOUT PRIOR WRITTEN AUTHORIZATION FROM VIKA MARYLAND, LLC. VIOLATIONS MAY RESULT IN PROSECUTION. ONLY APPROVED, SIGNED AND SEALED PLANS OR DRAWINGS MAY BE UTILIZED FOR CONSTRUCTION PURPOSES.

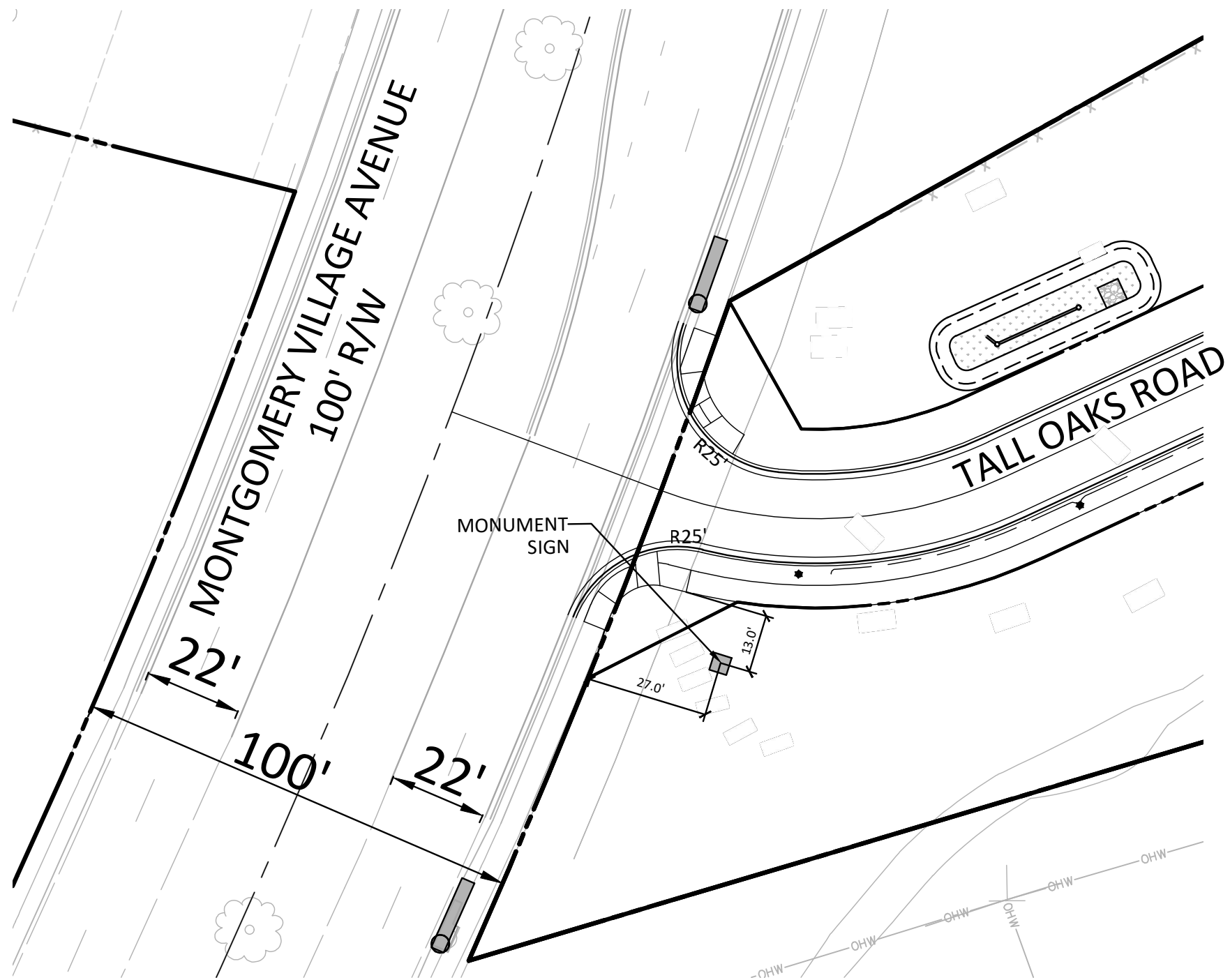
© 2019 VIKA MARYLAND, LLC

MONUMENT SIGN LOCATION

BLOOM MV
9TH ELECTION DISTRICT
MONTGOMERY COUNTY, MARYLAND
WSSC GRID: 227 NW 09 TAX MAP: FU342

AREA 4
NORTH-WEST ENTRANCE

DRAWN BY: LWA
DESIGNED BY: JS
DATE ISSUED: 11/12/2021
PROJECT No. VM 1920 W
SHEET No. 7



THE INFORMATION, DESIGN AND CONTENT OF THESE DRAWINGS OR DOCUMENTS ARE PROPRIETARY TO VIKA MARYLAND, LLC AND CONSTITUTE ITS PROPRIETARY INTELLECTUAL PROPERTY. THESE DRAWINGS AND/OR DOCUMENTS MUST NOT BE FORWARDED, SHARED, COPIED, DIGITALLY CONVERTED, MODIFIED OR USED FOR ANY PURPOSE, IN ANY FORMAT, WITHOUT PRIOR WRITTEN AUTHORIZATION FROM VIKA MARYLAND, LLC. VIOLATIONS MAY RESULT IN PROSECUTION. ONLY APPROVED, SIGNED AND SEALED PLANS OR DRAWINGS MAY BE UTILIZED FOR CONSTRUCTION PURPOSES.

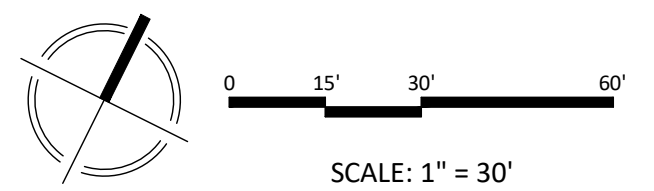
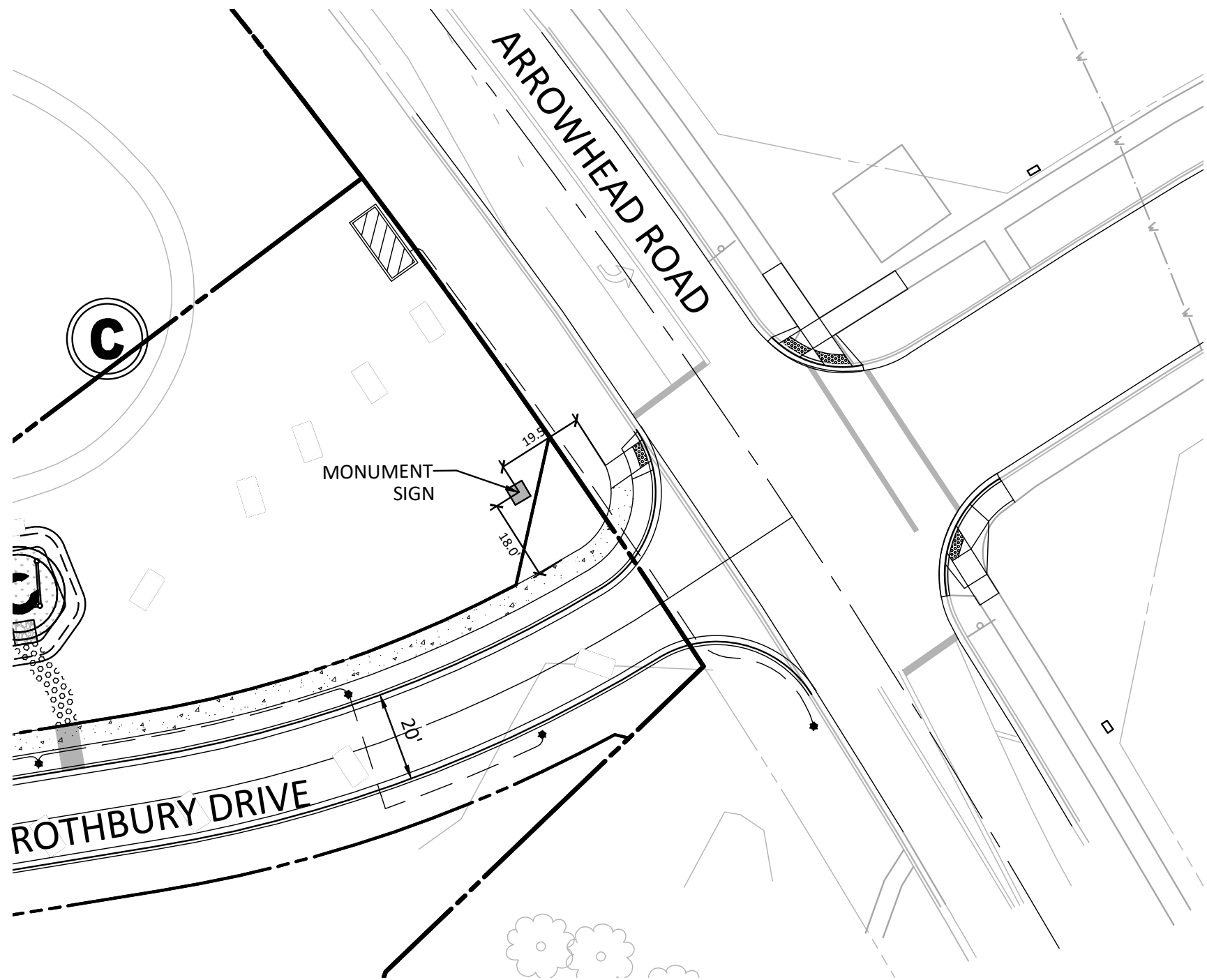
© 2019 VIKA MARYLAND, LLC

MONUMENT SIGN LOCATION

BLOOM MV
 9TH ELECTION DISTRICT
 MONTGOMERY COUNTY, MARYLAND
 WSSC GRID: 227 NW 09 TAX MAP: FU342

AREA 4
SOUTH-WEST ENTRANCE

DRAWN BY: LWA
 DESIGNED BY: JS
 DATE ISSUED: 11/12/2021
 PROJECT No. VM 1920 W
 SHEET No. 8



THE INFORMATION, DESIGN AND CONTENT OF THESE DRAWINGS OR DOCUMENTS ARE PROPRIETARY TO VIKA MARYLAND, LLC AND CONSTITUTE ITS PROPRIETARY INTELLECTUAL PROPERTY. THESE DRAWINGS AND/OR DOCUMENTS MUST NOT BE FORWARDED, SHARED, COPIED, DIGITALLY CONVERTED, MODIFIED OR USED FOR ANY PURPOSE, IN ANY FORMAT, WITHOUT PRIOR WRITTEN AUTHORIZATION FROM VIKA MARYLAND, LLC. VIOLATIONS MAY RESULT IN PROSECUTION. ONLY APPROVED, SIGNED AND SEALED PLANS OR DRAWINGS MAY BE UTILIZED FOR CONSTRUCTION PURPOSES.

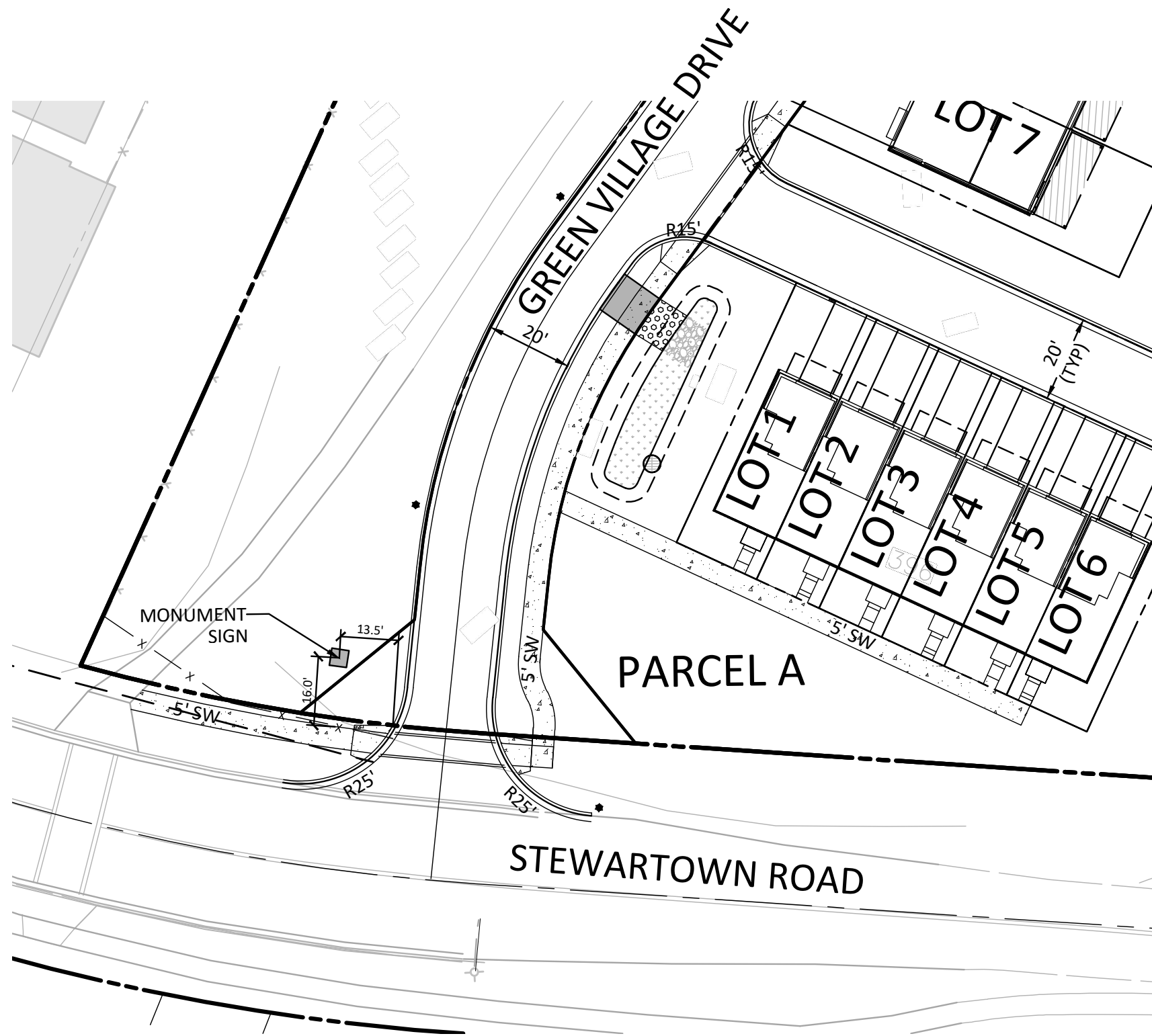
© 2019 VIKA MARYLAND, LLC

MONUMENT SIGN LOCATION

BLOOM MV
 9TH ELECTION DISTRICT
 MONTGOMERY COUNTY, MARYLAND
 WSSC GRID: 227 NW 09 TAX MAP: FU342

AREA 4 EAST ENTRANCE

DRAWN BY: LWA
 DESIGNED BY: JS
 DATE ISSUED: 11/12/2021
 PROJECT No. VM 1920 W
 SHEET No. 9



THE INFORMATION, DESIGN AND CONTENT OF THESE DRAWINGS OR DOCUMENTS ARE PROPRIETARY TO VIKI MARYLAND, LLC AND CONSTITUTE ITS PROPRIETARY INTELLECTUAL PROPERTY. THESE DRAWINGS AND/OR DOCUMENTS MUST NOT BE FORWARDED, SHARED, COPIED, DIGITALLY CONVERTED, MODIFIED OR USED FOR ANY PURPOSE, IN ANY FORMAT, WITHOUT PRIOR WRITTEN AUTHORIZATION FROM VIKI MARYLAND, LLC. VIOLATIONS MAY RESULT IN PROSECUTION. ONLY APPROVED, SIGNED AND SEALED PLANS OR DRAWINGS MAY BE UTILIZED FOR CONSTRUCTION PURPOSES.

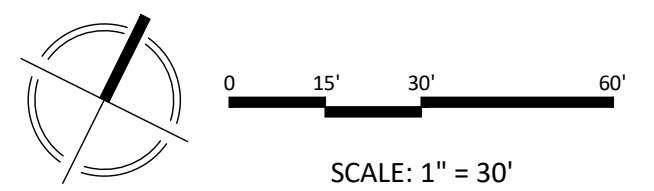
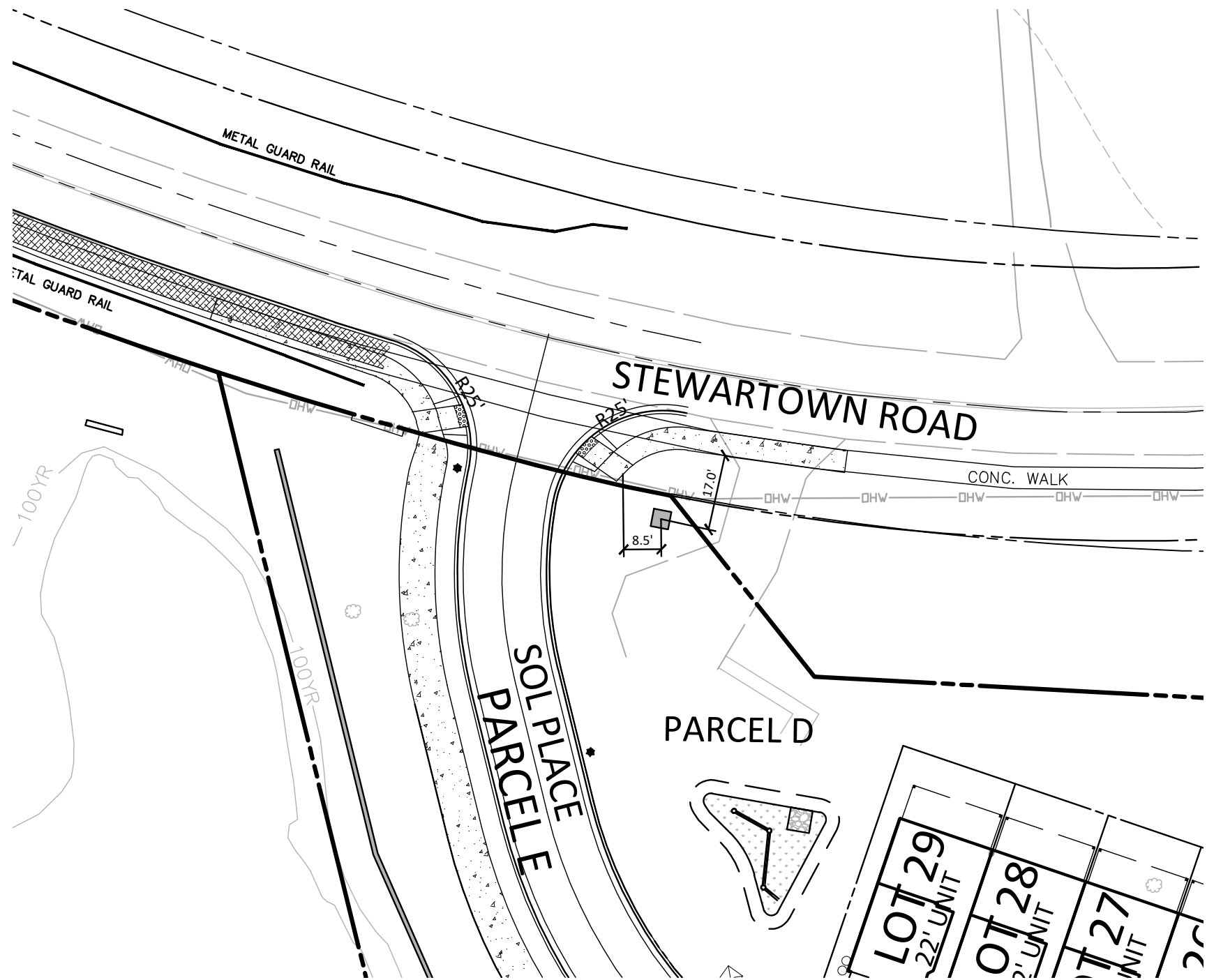
© 2019 VIKI MARYLAND, LLC

MONUMENT SIGN LOCATION

BLOOM MV
 9TH ELECTION DISTRICT
 MONTGOMERY COUNTY, MARYLAND
 WSSC GRID: 227 NW 09 TAX MAP: FU342

AREA 5
SOUTH ENTRANCE

DRAWN BY: LWA
 DESIGNED BY: JS
 DATE ISSUED: 11/12/2021
 PROJECT No. VM 1920 W
 SHEET No. 10



THE INFORMATION, DESIGN AND CONTENT OF THESE DRAWINGS OR DOCUMENTS ARE PROPRIETARY TO VIKA MARYLAND, LLC AND CONSTITUTE ITS PROPRIETARY INTELLECTUAL PROPERTY. THESE DRAWINGS AND/OR DOCUMENTS MUST NOT BE FORWARDED, SHARED, COPIED, DIGITALLY CONVERTED, MODIFIED OR USED FOR ANY PURPOSE, IN ANY FORMAT, WITHOUT PRIOR WRITTEN AUTHORIZATION FROM VIKA MARYLAND, LLC. VIOLATIONS MAY RESULT IN PROSECUTION. ONLY APPROVED, SIGNED AND SEALED PLANS OR DRAWINGS MAY BE UTILIZED FOR CONSTRUCTION PURPOSES.

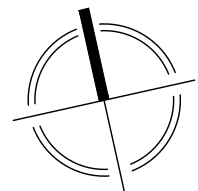
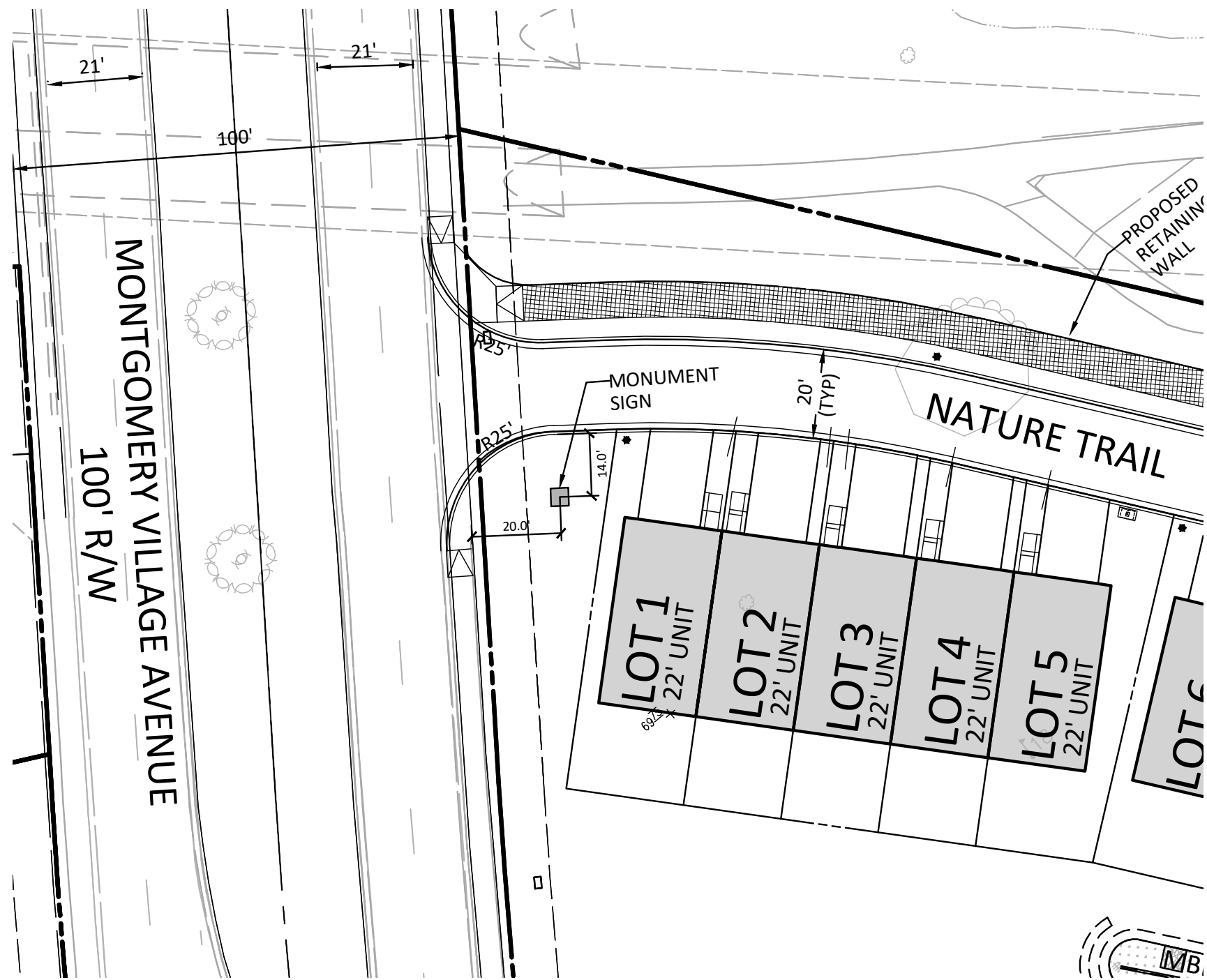
© 2019 VIKA MARYLAND, LLC

MONUMENT SIGN LOCATION

BLOOM MV
 9TH ELECTION DISTRICT
 MONTGOMERY COUNTY, MARYLAND
 WSSC GRID: 227 NW 09 TAX MAP: FU342

AREA 6B
NORTH ENTRANCE

DRAWN BY: LWA
 DESIGNED BY: JS
 DATE ISSUED: 11/12/2021
 PROJECT No. VM 1920 W
 SHEET No. 11



SCALE: 1" = 30'

THE INFORMATION, DESIGN AND CONTENT OF THESE DRAWINGS OR DOCUMENTS ARE PROPRIETARY TO VIKA MARYLAND, LLC AND CONSTITUTE ITS PROPRIETARY INTELLECTUAL PROPERTY. THESE DRAWINGS AND/OR DOCUMENTS MUST NOT BE FORWARDED, SHARED, COPIED, DIGITALLY CONVERTED, MODIFIED OR USED FOR ANY PURPOSE, IN ANY FORMAT, WITHOUT PRIOR WRITTEN AUTHORIZATION FROM VIKA MARYLAND, LLC. VIOLATIONS MAY RESULT IN PROSECUTION. ONLY APPROVED, SIGNED AND SEALED PLANS OR DRAWINGS MAY BE UTILIZED FOR CONSTRUCTION PURPOSES.

© 2019 VIKA MARYLAND, LLC

MONUMENT SIGN LOCATION

BLOOM MV
9TH ELECTION DISTRICT
MONTGOMERY COUNTY, MARYLAND
WSSC GRID: 227 NW 09 TAX MAP: FU342

**AREA 6B
WEST ENTRANCE**

DRAWN BY: LWA
DESIGNED BY: JS
DATE ISSUED: 11/12/2021
PROJECT No. VM 1920 W
SHEET No. 12